

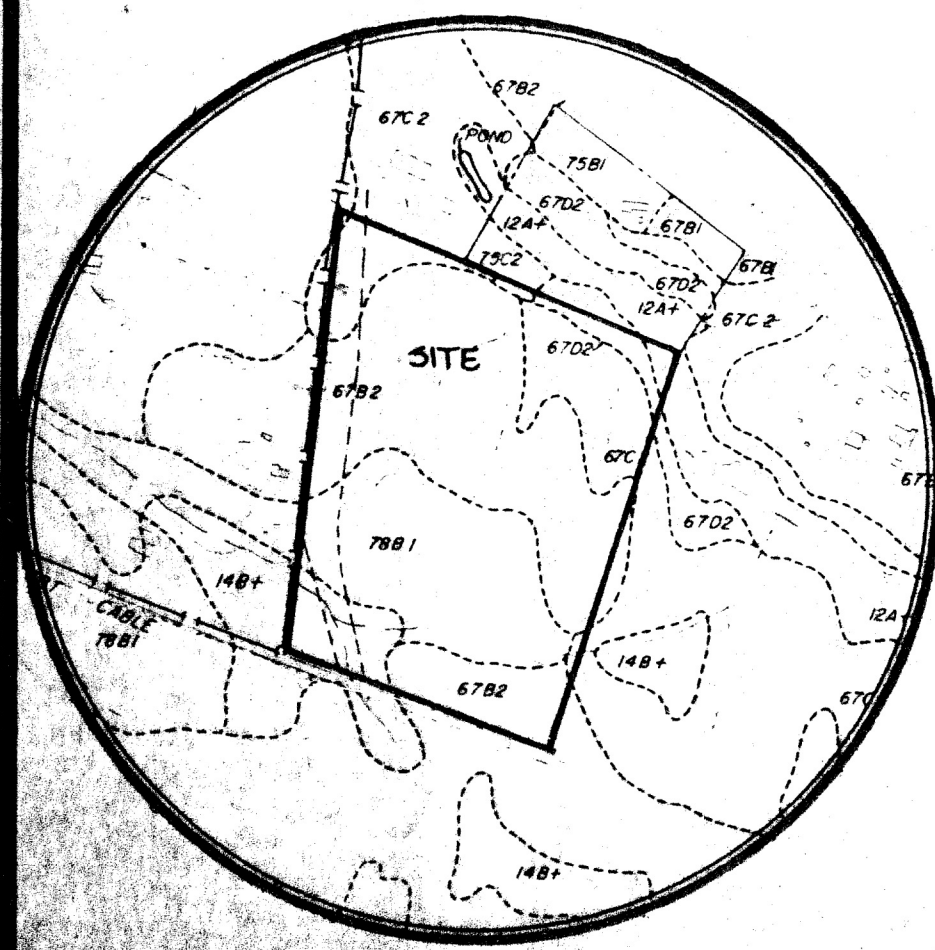
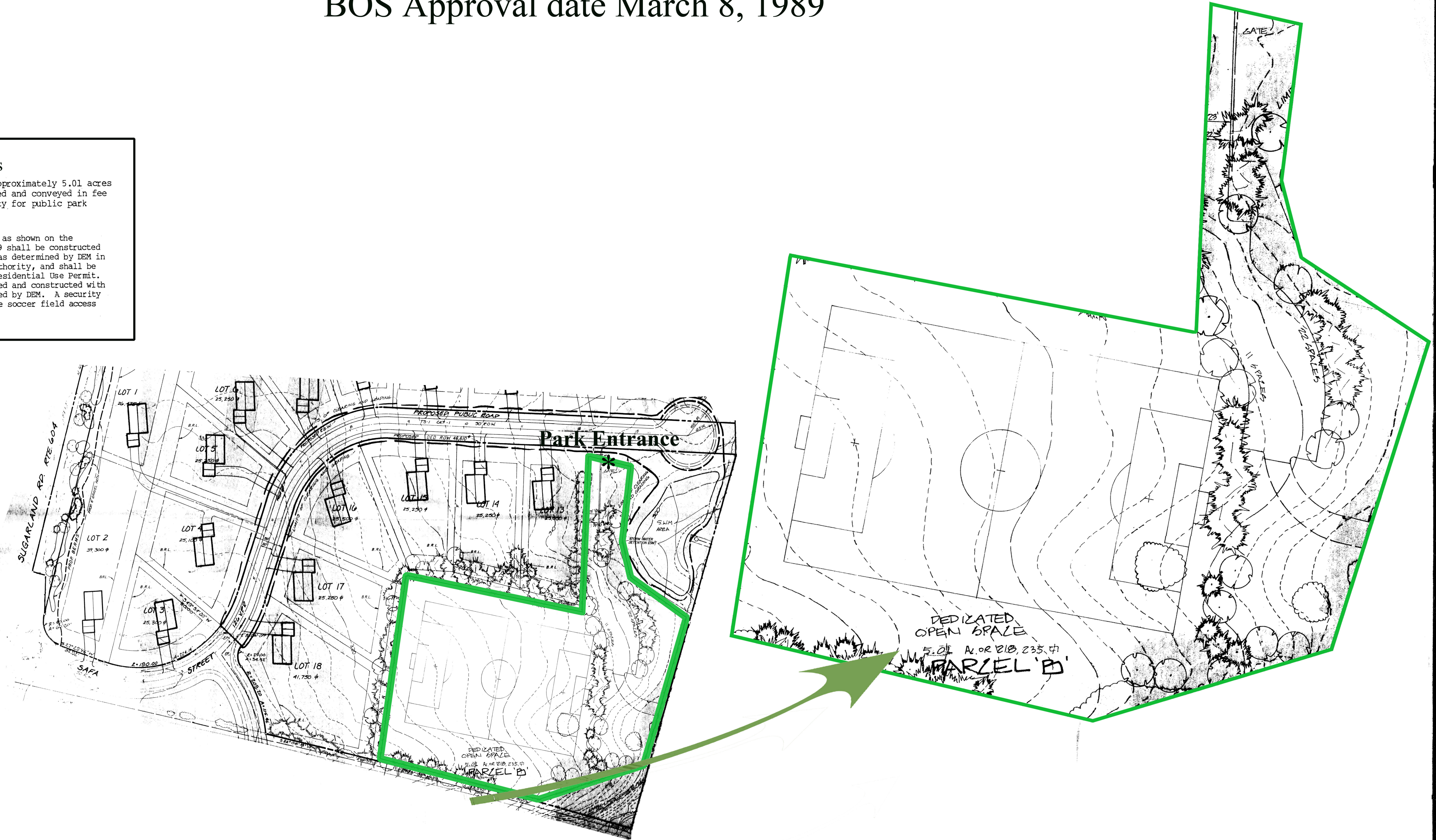
Grand Hamptons Park Proffered Park

Dedicated with SE 88-D-090
BOS Approval date March 8, 1989

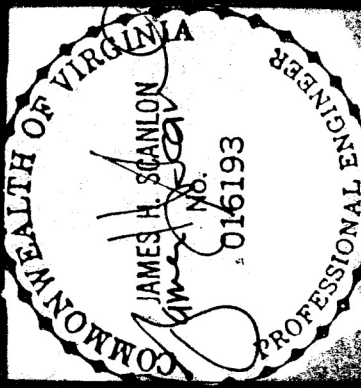
Relevant Proffers

As shown on the Special Exception Plat, approximately 5.01 acres identified as "Parcel B" shall be dedicated and conveyed in fee simple to the Fairfax County Park Authority for public park purposes.

The soccer field and associated parking area as shown on the Special Exception Plat dated February 9, 1989 shall be constructed to Public Facilities Manual (PFM) standards as determined by DEM in consultation with the Fairfax County Park Authority, and shall be constructed prior to issuance of the first Residential Use Permit. The soccer field access road shall be designed and constructed with a minimum of 22 feet of pavement as determined by DEM. A security gate shall be provided at the entrance of the soccer field access road as determined by DEM.



The BC Consultants
BEST OF CONSULTANTS RATED, June 1991, Williams, Virginia 23181
703-627-3333



SPECIAL EXCEPTION PLAN
GRAND HAMPTONS
 SECTION ONE
 PRANESVILLE MAGISTERIAL DISTRICT
 FAIRFAX COUNTY, VIRGINIA

0-25-25 - MAKE BOILER ROOM
 1-8-89 - ADD PARKING LOT
 POSSIBLE CONSULTANTS
PRINTED
 FEB 10 1989
 CONSULTANTS
 Stanley Martin Consultants, Inc.
 11000 Lee Road
 Silver Spring, MD 20903
 DESIGNED BY: ROBERT B. BROWN
 CHECKED BY: JAMES H. BLAND
 DATE: OCT 21, 1988
 SCALE: 1" = 20'
 1 of 1
 SE-88-D-090
 85-126-18