

# Summary of Re-Precincting Changes

March 2022

Fairfax County Office of Elections

## Table of Contents

Overview .....	2
100s – BRADDOCK DISTRICT .....	3
200s – HUNTER MILL DISTRICT .....	11
300s – DRANESVILLE DISTRICT .....	18
400s – FRANCONIA DISTRICT .....	21
500s – MASON DISTRICT .....	28
600s – MOUNT VERNON DISTRICT .....	38
700s – PROVIDENCE DISTRICT .....	47
800s – SPRINGFIELD DISTRICT.....	51
900s – SULLY DISTRICT .....	61
List of all Fairfax County precincts and polling places, as approved.....	72

# Overview

As a result of the 2020 census and subsequent adoption of new congressional district, Senate district, and House of Delegate districts lines as drawn by the special masters for the Supreme Court of Virginia, local governing bodies were required to eliminate any resulting split precincts as required by Virginia Code 24.2-307; each precinct must now be wholly contained within a single congressional, state senate, delegate, and magisterial district.

In Fairfax County, 48 precincts were directly split by the new district lines implemented by the Supreme Court of Virginia; in total, more than 100 precincts were split, impacted, or created as a result of the required changes. The listed changes herein include creating new precincts with an established polling place, or merging and consolidating, where possible, any of the split precinct parts into a contiguous precinct with the same electoral attributes.

After completing this process, four precinct parts remained that contained no registered voters and shared no electoral attributes with any adjoining precincts. This includes two regions in the Franconia District, created from the splits of GARFIELD and PIONEER precincts, and two regions in the Springfield District, created from the splits of BURKE and PENDERBROOK precincts. In accordance with established procedures set by the Virginia Department of Elections, which allows for localities to request a waiver in lieu of creating a new precinct with fewer than 100 registered voters, we will request a waiver to keep these impacted areas as part of their existing precincts.

# 100s – BRADDOCK DISTRICT

Supervisor James R. Walkinshaw

1. **108 KINGS PARK** and **133 DANBURY**, previously divided by a political boundary, now share common attributes.
  - a. Absorb 133 DANBURY (751 voters) into 108 KINGS PARK (2,589 voters) and maintain as 108 KINGS PARK (3,340 voters) that will vote at Kings Park Elementary School (*fig. A1*).
2. **113 CANTERBURY** was split due to redistricting.
  - a. Absorb the western part of 113 CANTERBURY (348 voters) into 109 LITTLE RUN (1,340 voters) and maintain as 109 LITTLE RUN (1,688 voters) that will vote at Little Run Elementary School (*fig. A2*).
3. **117 WOODSON** was split due to redistricting.
  - a. Create 117 WOODSON #1 (2,159 voters) and 136 WOODSON #2 (1,071 voters) that will co-locate and continue to vote at Woodson High School (*fig. A3*).
4. **120 SIDEBURN** was split due to redistricting.
  - a. Create 120 SIDEBURN #1 (1,140 voters) and 137 SIDEBURN #2 (2,200 voters) that will co-locate and continue to vote at Oak View Elementary School (*fig. A4*).
5. **121 VILLA** and **131 EAGLE VIEW** were each split due to redistricting.
  - a. Maintain the eastern part of 121 VILLA (2,230 voters) as a precinct that will continue to vote at Fairfax Villa Elementary School (*fig. A5*).
  - b. Maintain the northern part of 131 EAGLE VIEW (2,092 voters) as 131 EAGLE VIEW #1 that will continue to vote at Eagle View Elementary School (*fig. A6*).
  - c. Merge the western part of 121 VILLA (1 voter) and southern part of 131 EAGLE VIEW (2,055 voters) to create 138 EAGLE VIEW #2 (2,056 voters) and establish its polling place at Eagle View Elementary School (*fig. A7*).
6. **827 IRVING** was re-assigned to Braddock District during county-level redistricting.
  - a. Maintain this precinct as 135 IRVING (2,816 voters) and continue to vote at Irving Middle School.

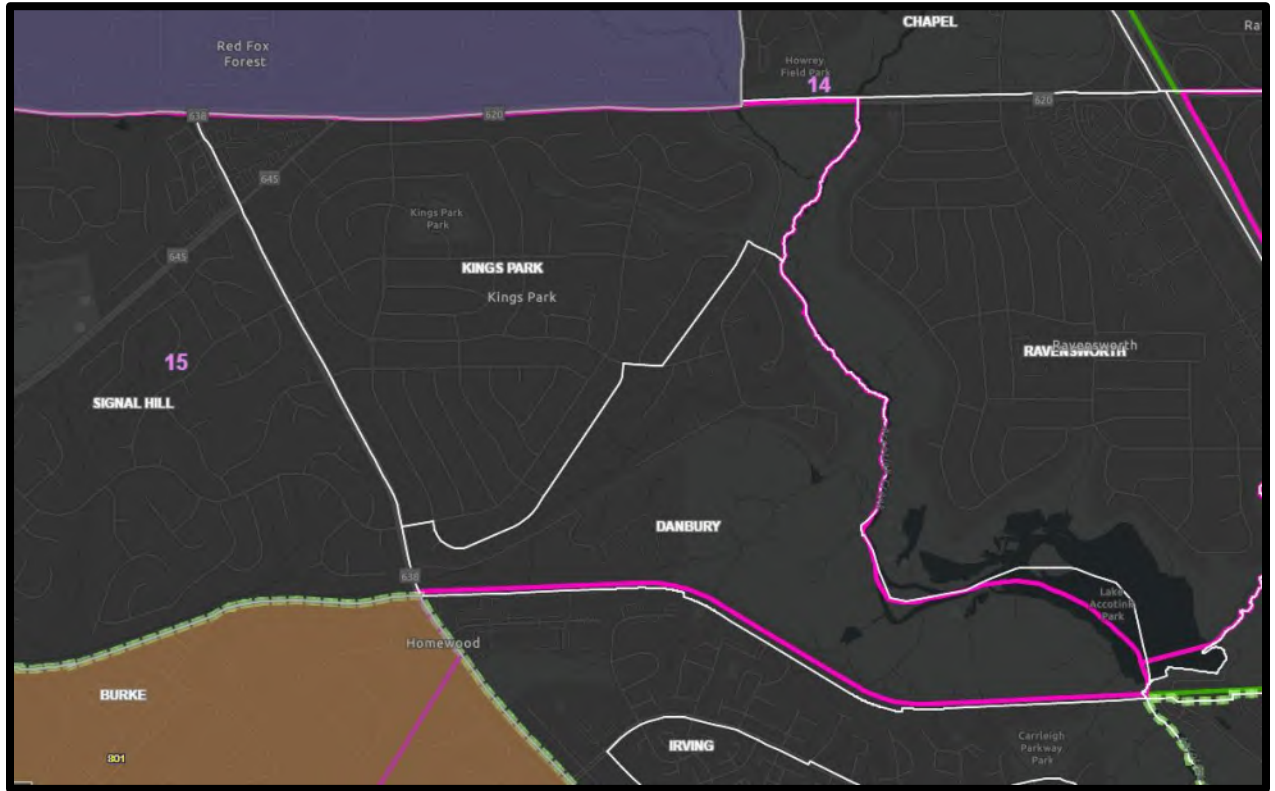


Figure A1

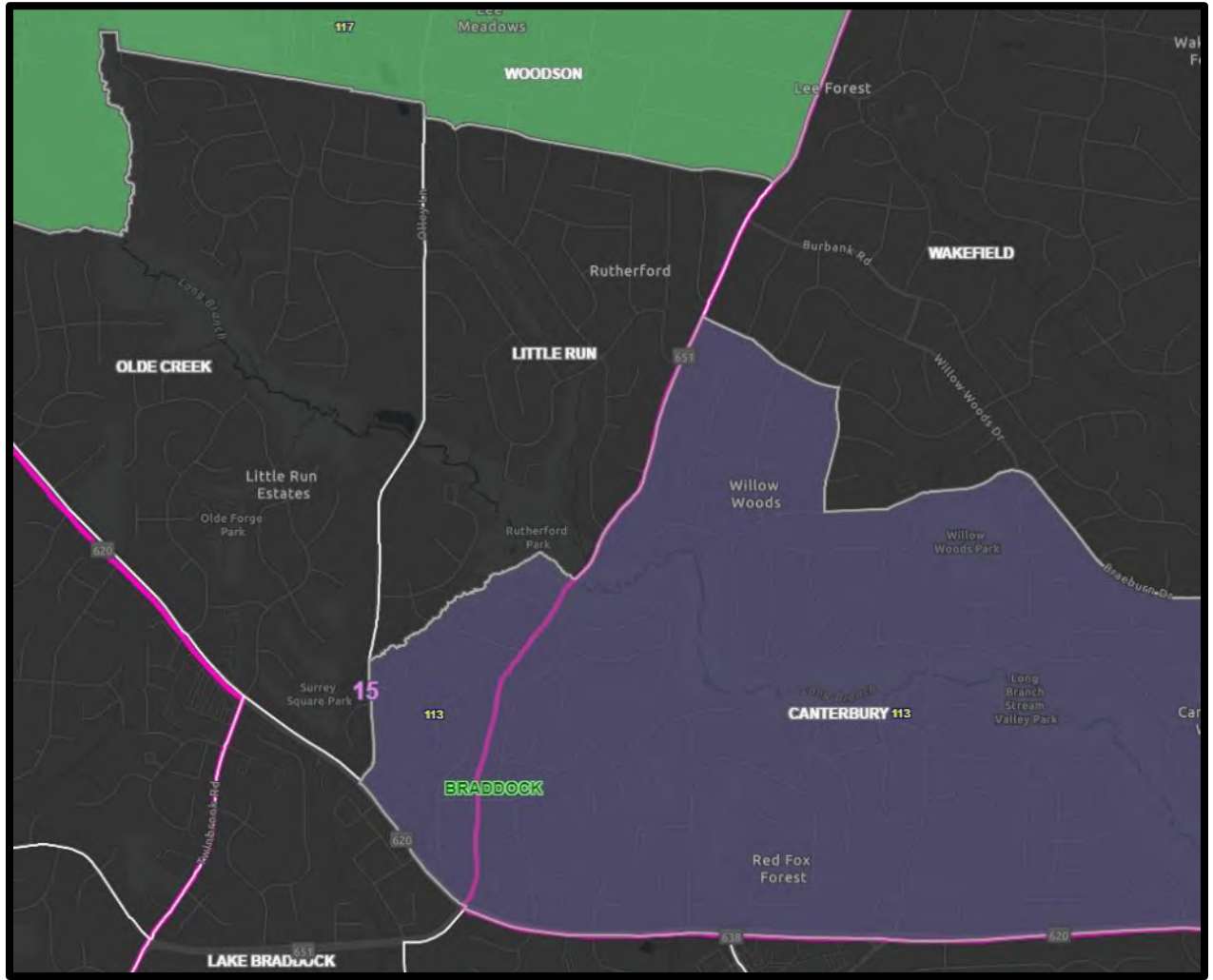


Figure A2



Figure A3

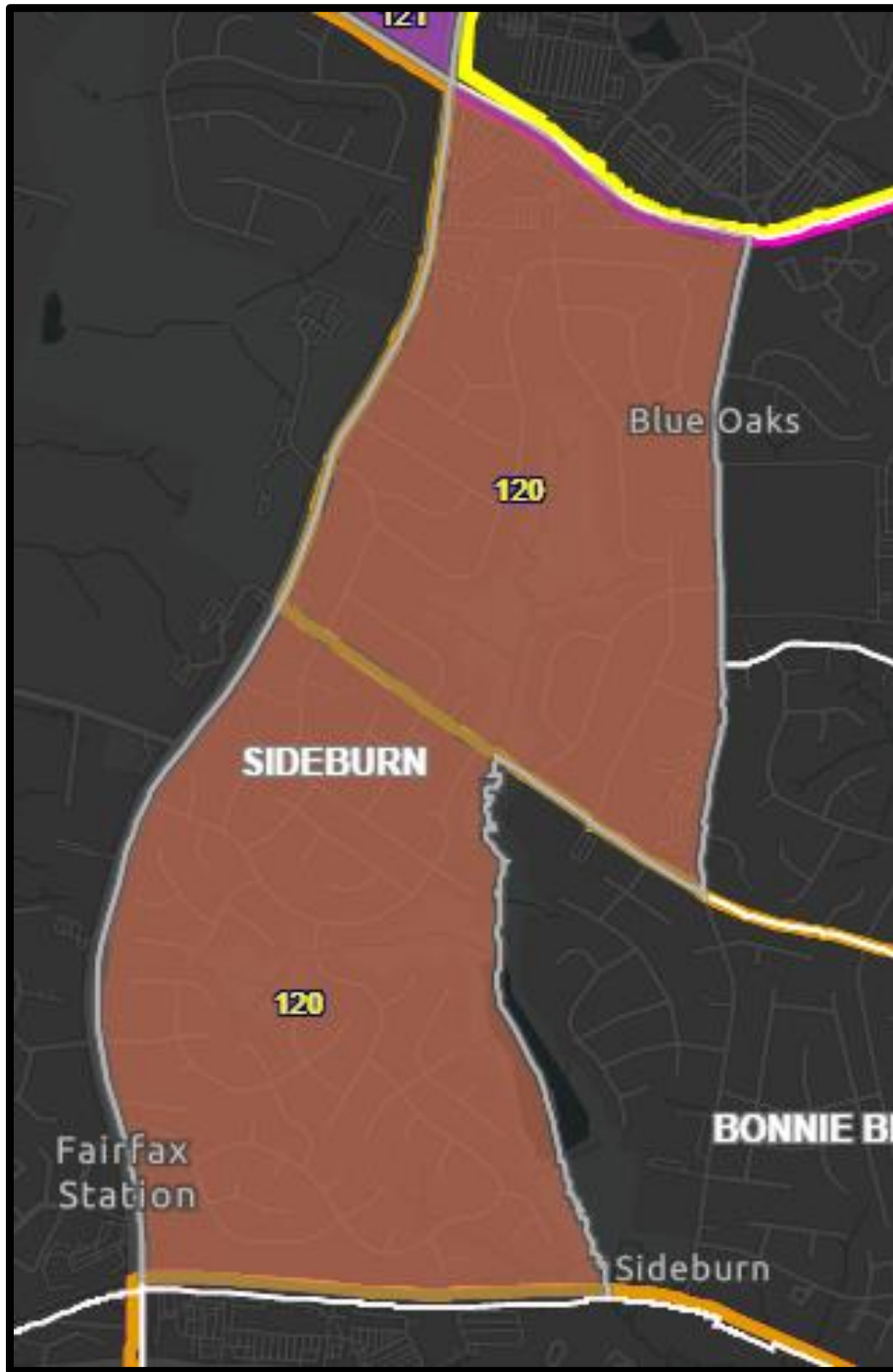


Figure A4

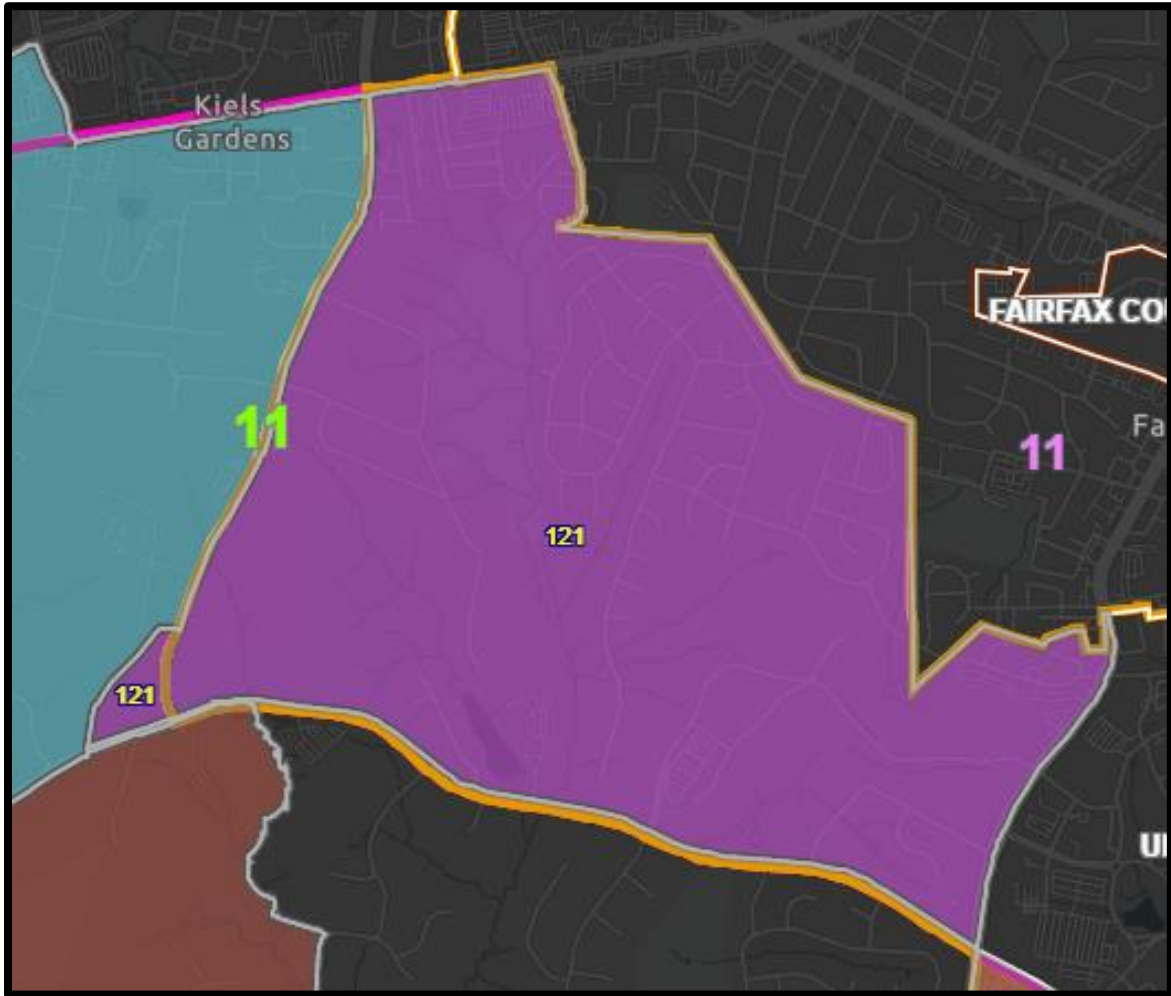


Figure A5



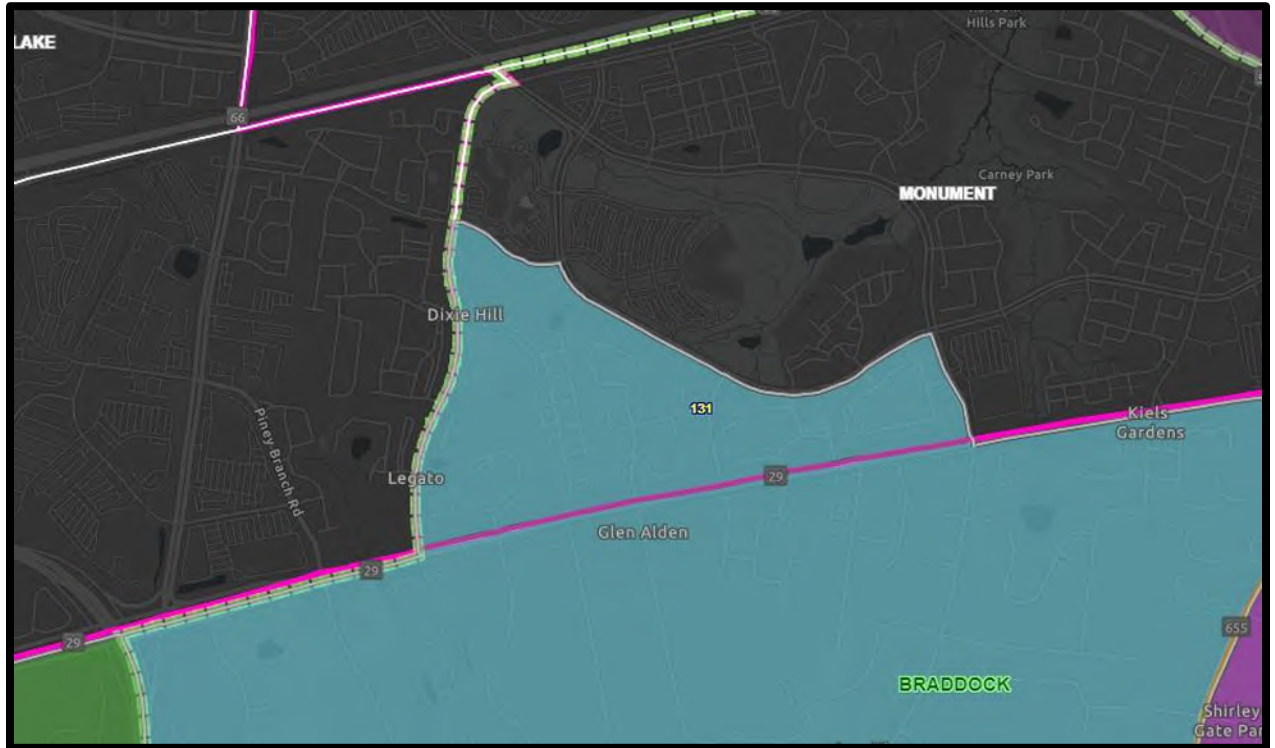


Figure A6



Figure A7

## 200s – HUNTER MILL DISTRICT

### Supervisor Walter L. Alcorn

1. **202 FLINT HILL** was split into three parts due to redistricting.
  - a. Maintain the eastern part as 202 FLINT HILL #1 (1,606 voters) that will continue to vote at Flint Hill Elementary School (*fig. B1*).
  - b. Merge the northwestern part (42 voters) and southwestern part (1,581 voters) to create 241 FLINT HILL #2 (1,623 voters) to co-locate with 202 FLINT HILL #1 and continue to vote at Flint Hill Elementary School (*fig. B1*).
2. **219 WESTBRIAR** was split into two parts due to redistricting.
  - a. Create 219 WESTBRIAR #1 (2,197 voters) and 242 WESTBRIAR #2 (1,836 voters) to co-locate and continue to vote at Westbriar Elementary School (*fig. B2*).
3. **227 SUNRISE VALLEY** was split due to redistricting. **223 GLADE** and **224 SOUTH LAKES**, which contained a large number of voters, were divided.
  - a. Maintain the western part of 223 GLADE (3,885 voters) as a precinct that will continue to vote at Reston Community Center (*fig. B3*).
  - b. Maintain the western part of 224 SOUTH LAKES (4,654 voters) as a precinct that will continue to vote at South Lakes High School (*fig. B3*).
  - c. Maintain the eastern part of 227 SUNRISE VALLEY (1,094 voters) as 243 SUNRISE VALLEY #2 that will continue to vote at Sunrise Valley Elementary School (*fig. B3*).
  - d. Merge the eastern portion of 223 GLADE (291 voters), the eastern portion of 224 SOUTH LAKES (911 voters), and the western portion of 227 SUNRISE VALLEY (879 voters) to create 227 SUNRISE VALLEY #1 (2,081) and establish its polling place at Sunrise Valley Elementary School (*fig. B3*).
4. **229 FOX MILL** was split due to redistricting.
  - a. Create 229 FOX MILL #1 (4,222 voters) and 244 FOX MILL #2 (592 voters) to co-locate and continue to vote at Fox Mill Elementary School (*fig. B4*).
5. **233 NORTH POINT** was split due to redistricting.
  - a. Create 233 NORTH POINT #1 (2,669 voters) and 245 NORTH POINT #2 (1,122 voters) to co-locate and continue to vote at St. Thomas á Becket Catholic Church (*fig. B5*).
6. **240 COLVIN** was split due to redistricting.
  - a. Maintain the eastern part of 240 COLVIN (2,650 voters) as a precinct that will continue to vote at The Capital Church (*fig. B6*).
  - b. Absorb the western part of 240 COLVIN (79 voters) into 209 RESTON #2 (3,808 voters) and maintain as RESTON #2 (3,887 voters) that will vote at Forest Edge Elementary School (*fig. B6*).

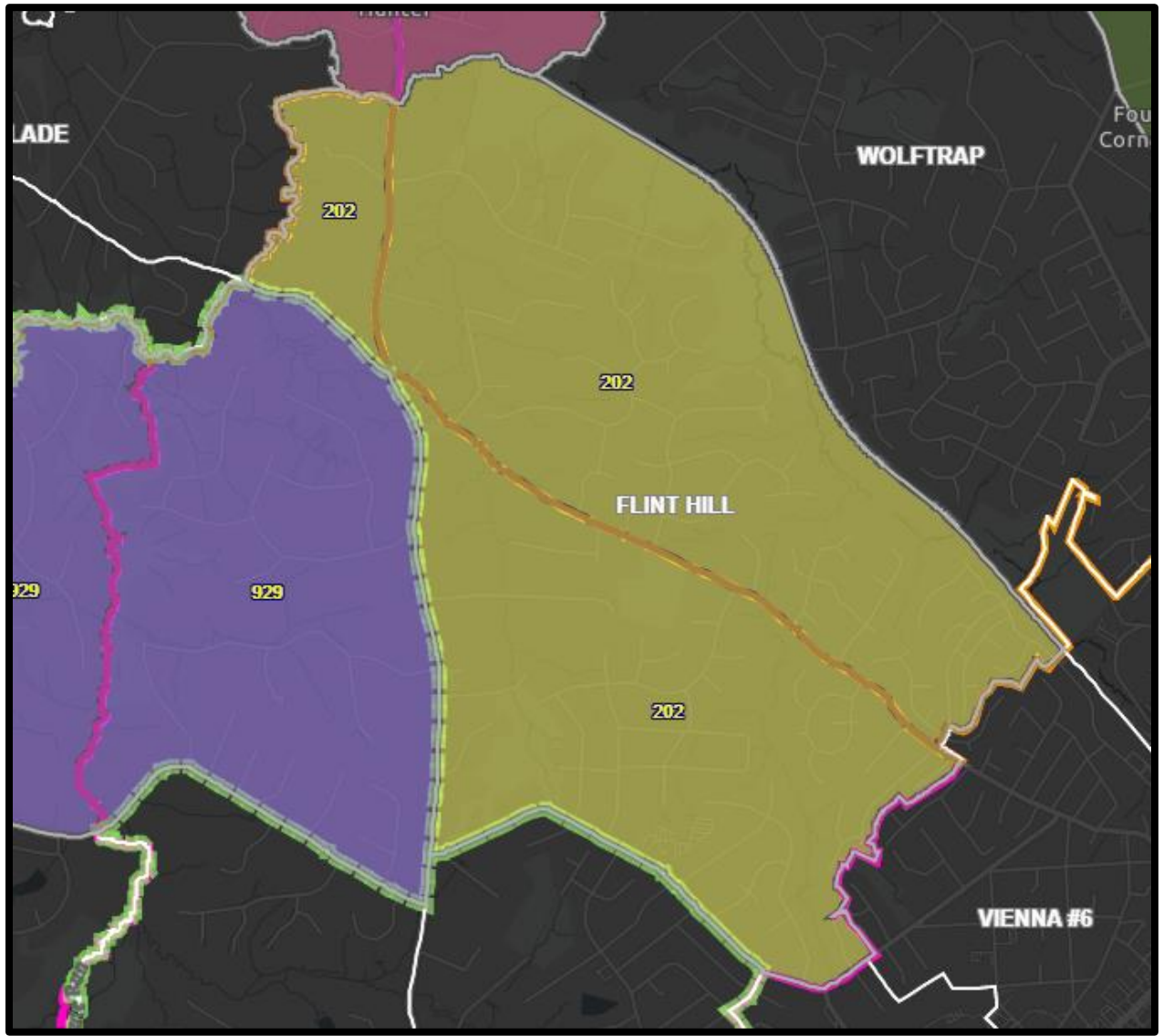


Figure B1



Figure B2

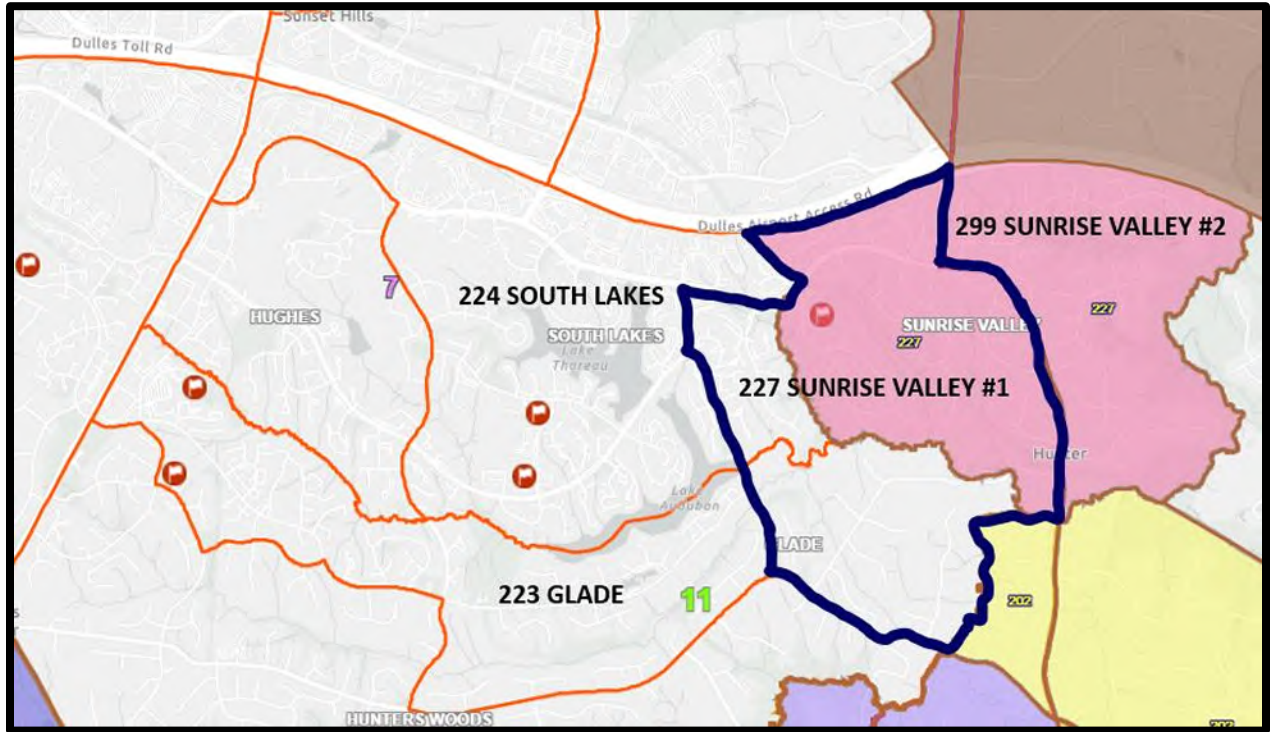


Figure B3

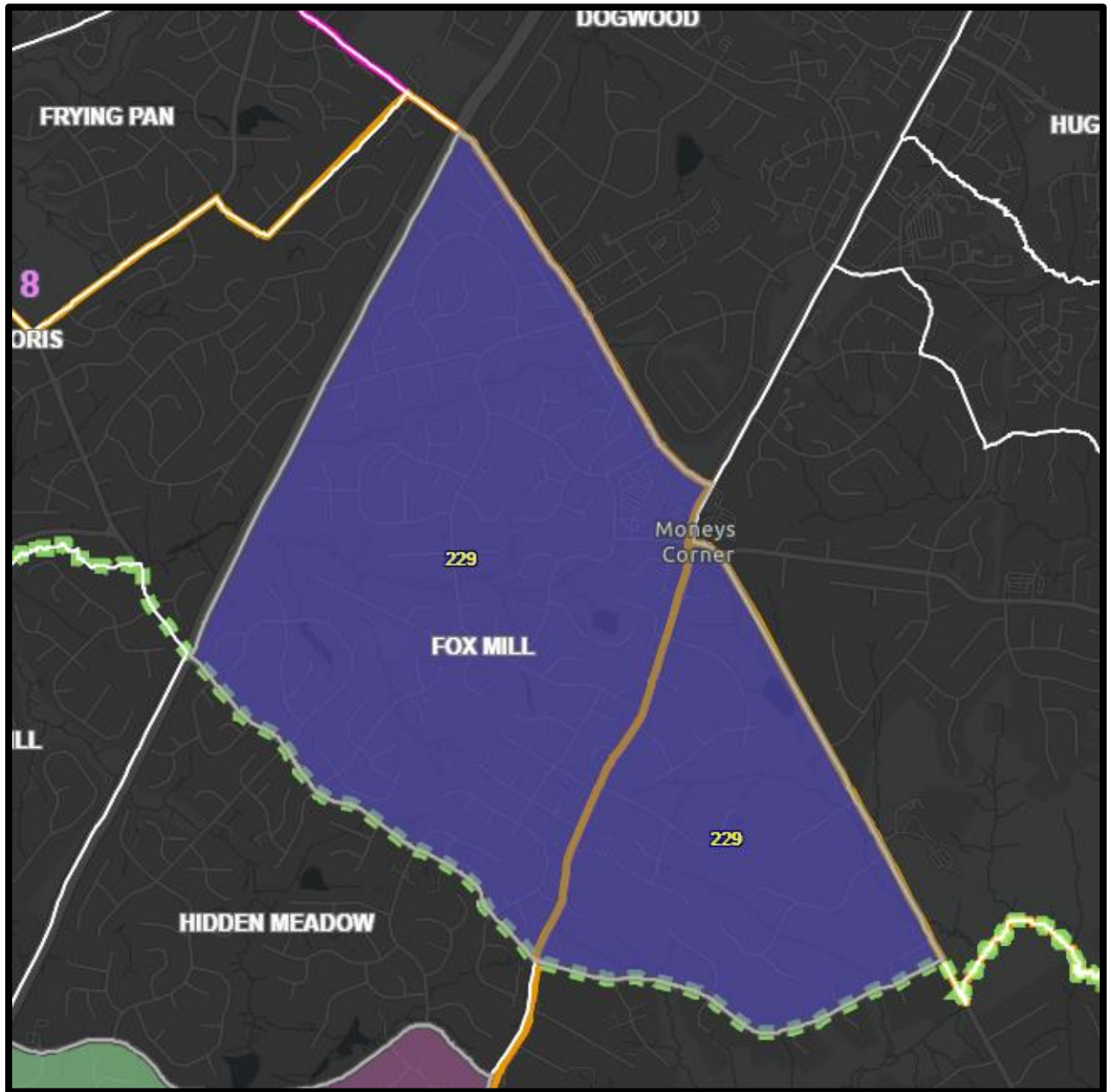


Figure B4

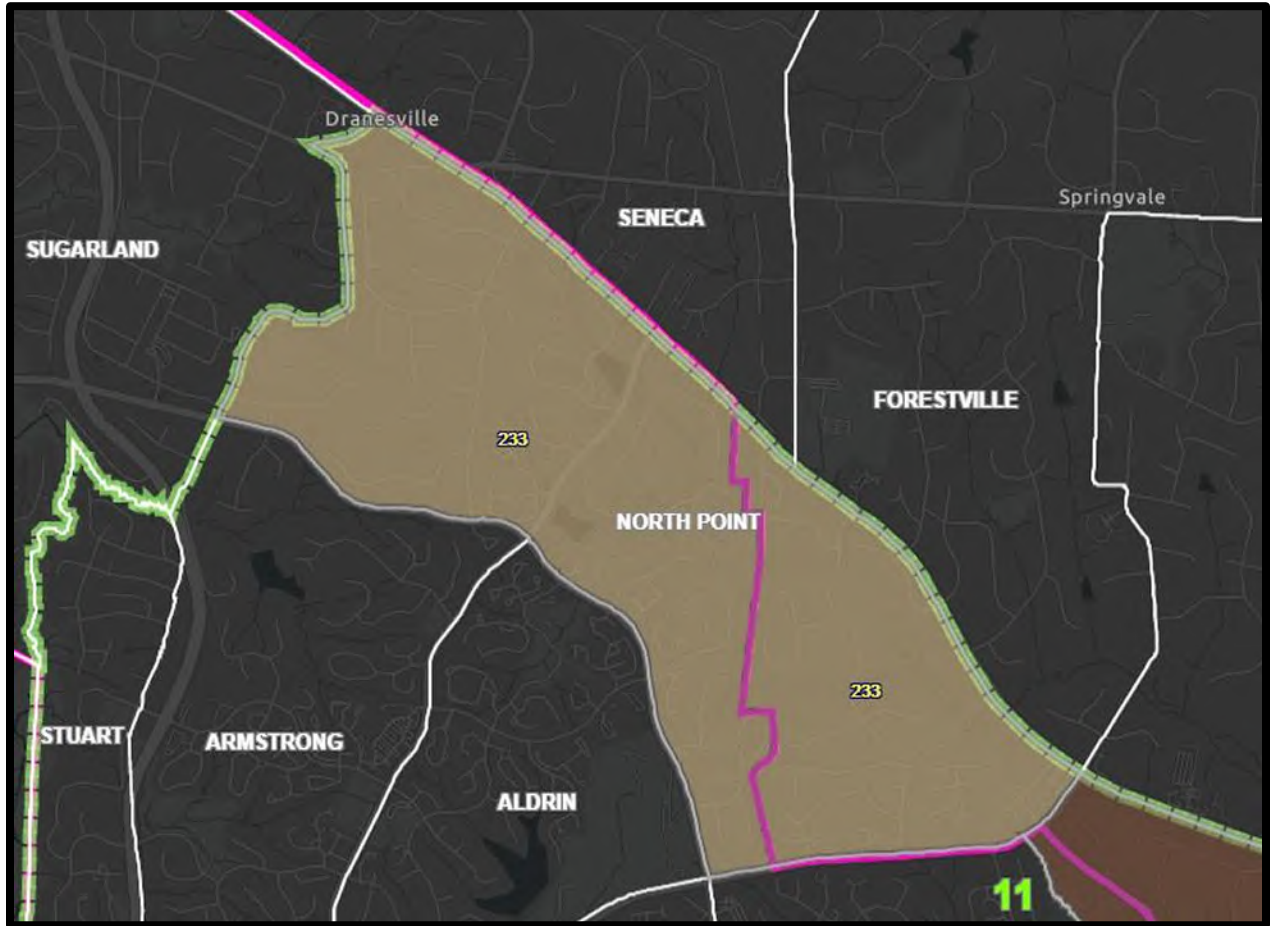


Figure B5



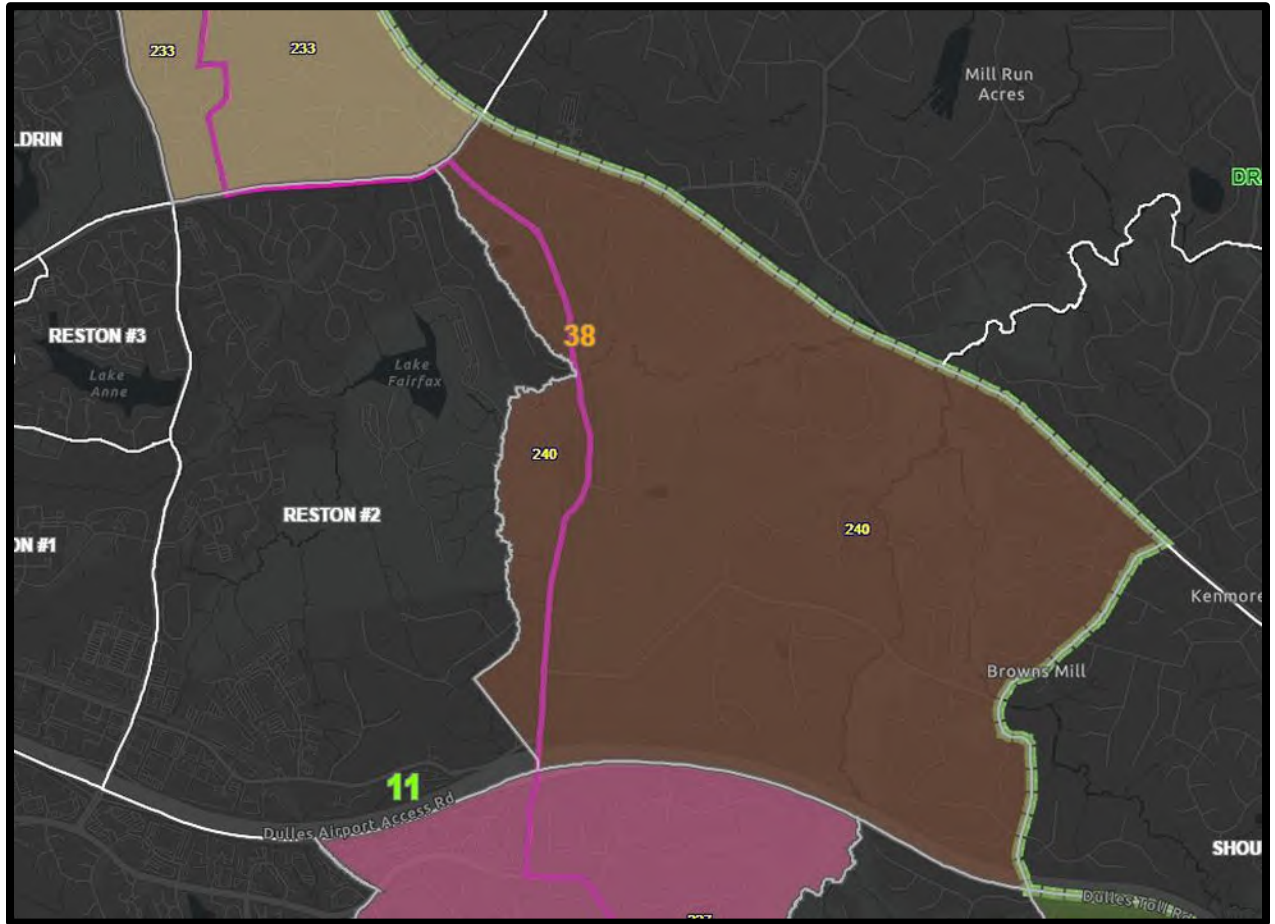


Figure B6

## 300s – DRANESVILLE DISTRICT

Supervisor John W. Foust

1. **317 WESTHAMPTON** was split due to redistricting.
  - a. Maintain the western part as 317 WESTHAMPTON (1,036 voters) that will continue to vote at Lemon Road Elementary School (*fig. C1*).
  - b. Merge the eastern part of 317 WESTHAMPTON (1,406 voters) with 307 HAYCOCK (2,686 voters), and maintain as 307 HAYCOCK (4,092 voters) that will vote at Haycock Elementary School (*fig. C1*).
  
2. **316 SALONA #1** and **333 SALONA #2**, previously divided by a political boundary, now share common attributes.
  - a. Merge 316 SALONA #1 (1,072 voters) and 333 SALONA #2 (1,935 voters) and rename the precinct 316 SALONA (3,007 voters) that will continue to vote at Franklin Sherman Elementary School (*fig. C2*).
  
3. **302 CHESTERBROOK** has had no boundary change.
  - a. 302 CHESTERBROOK (2,835 voters) will permanently co-locate and vote at Chesterbrook Elementary School.



Figure C1



Figure C2

# 400s – FRANCONIA DISTRICT

Supervisor Rodney L. Lusk

1. **404 FRANCONIA** was split into three parts due to redistricting.
  - a. Maintain the eastern part as 404 FRANCONIA #1 (2,010 voters) that will continue to vote at Edison High School (*fig. D1*).
  - b. Merge the northwestern part of 404 FRANCONIA (239 voters), the southwestern part of 404 FRANCONIA (1,946 voters), and 419 LANE #1 (1,461 voters) to create 432 FRANCONIA #2 (3,646 voters) and establish its polling place at Edison High School (*fig. D1*).
2. **409 PIONEER** was split due to redistricting.
  - a. Merge the northern part which has no registered voters and the southern part (4,428 voters) and maintain 409 PIONEER (4,428 voters) as a split precinct that will continue to vote at Lewis High School (*fig. D2*).
3. **417 GARFIELD** was split due to redistricting.
  - a. Merge the northern part (4,426 voters) and the southern part which has no registered voters and maintain 417 GARFIELD (4,426 voters) as a split precinct that will continue to vote at Garfield Elementary School (*fig. D3*).
4. **418 LYNBROOK** was split due to redistricting.
  - a. Create 418 LYNBROOK #1 (2,180 voters) and 433 LYNBROOK #2 (192 voters) that will co-locate and continue to vote at Lynbrook Elementary School (*fig. D4*).
5. **421 KINGSTOWNE** was split due to redistricting.
  - a. Maintain the eastern part of 421 KINGSTOWNE (4,016 voters) as a precinct that will continue to vote at Hayfield Secondary School (*fig. D5*).
  - b. Merge the western part of 421 KINGSTOWNE (281 voters) and 430 LANE #2 (2,418 voters) to create 419 LANE (2,699 voters) that will vote at Lane Elementary School (*fig. D5*).
6. **422 VAN DORN** was split due to redistricting.
  - a. Maintain the southern part of 422 VAN DORN (4,201 voters) as a precinct that will continue to vote at Key Middle School (*fig. D6*).
  - b. Absorb the northern section of 422 VAN DORN with no registered voters into 401 BUSH HILL (3,630 voters) (*fig. D6*).
7. **840 WEST SPRINGFIELD** was re-assigned to Franconia District during county-level redistricting.
  - a. Maintain this precinct as 431 WEST SPRINGFIELD (3,218 voters) and continue to vote at West Springfield Elementary School.

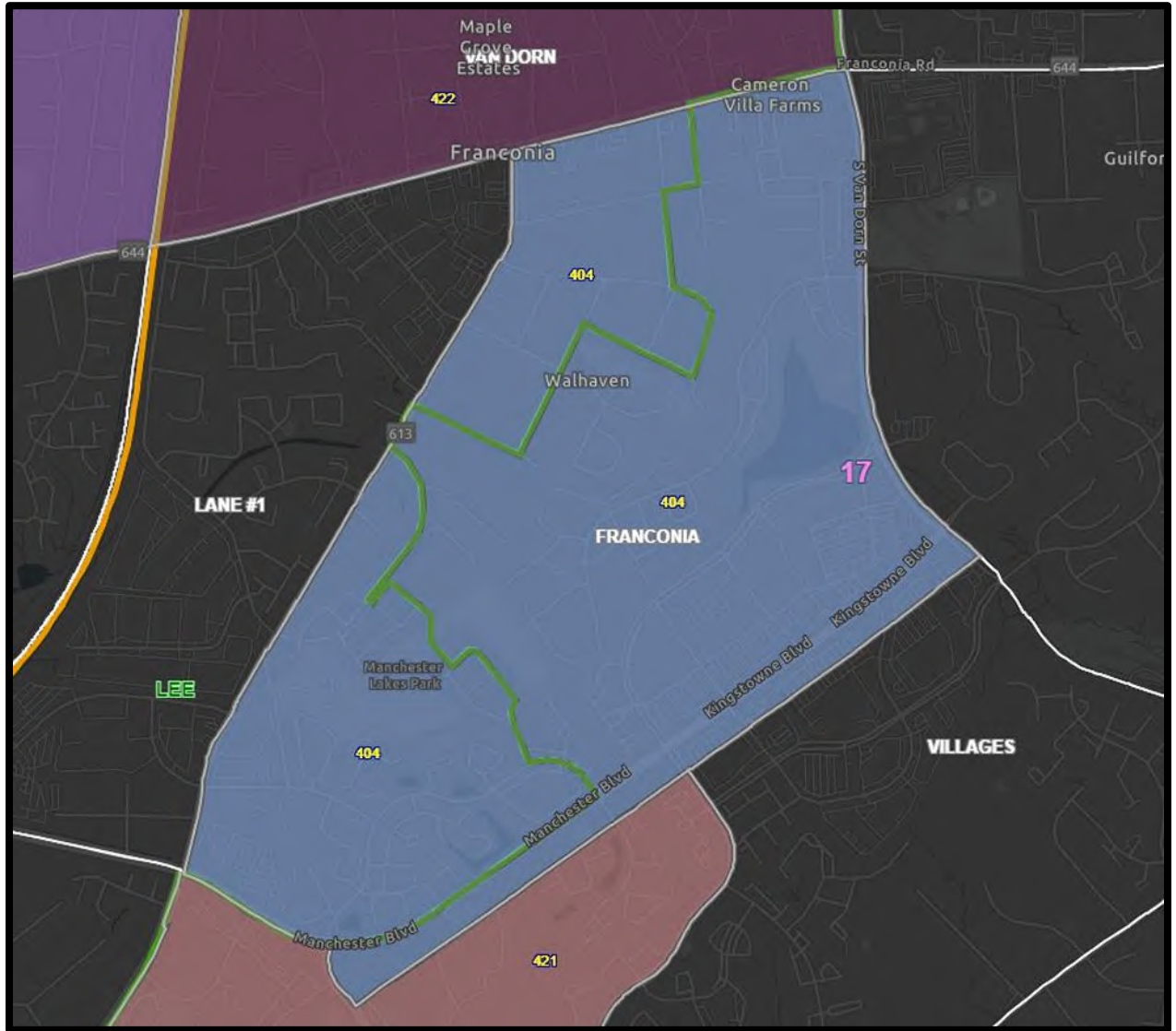


Figure D1

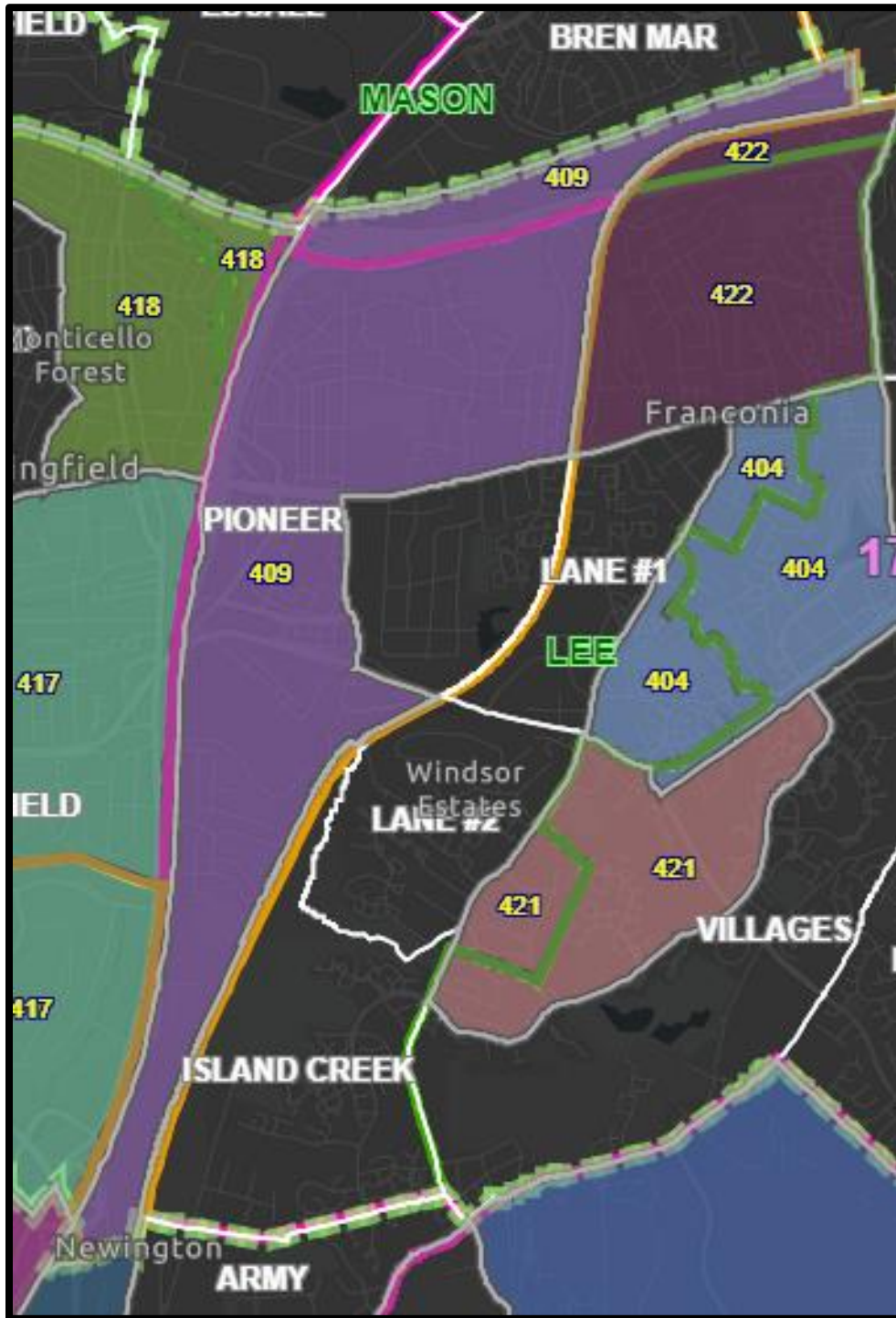


Figure D2

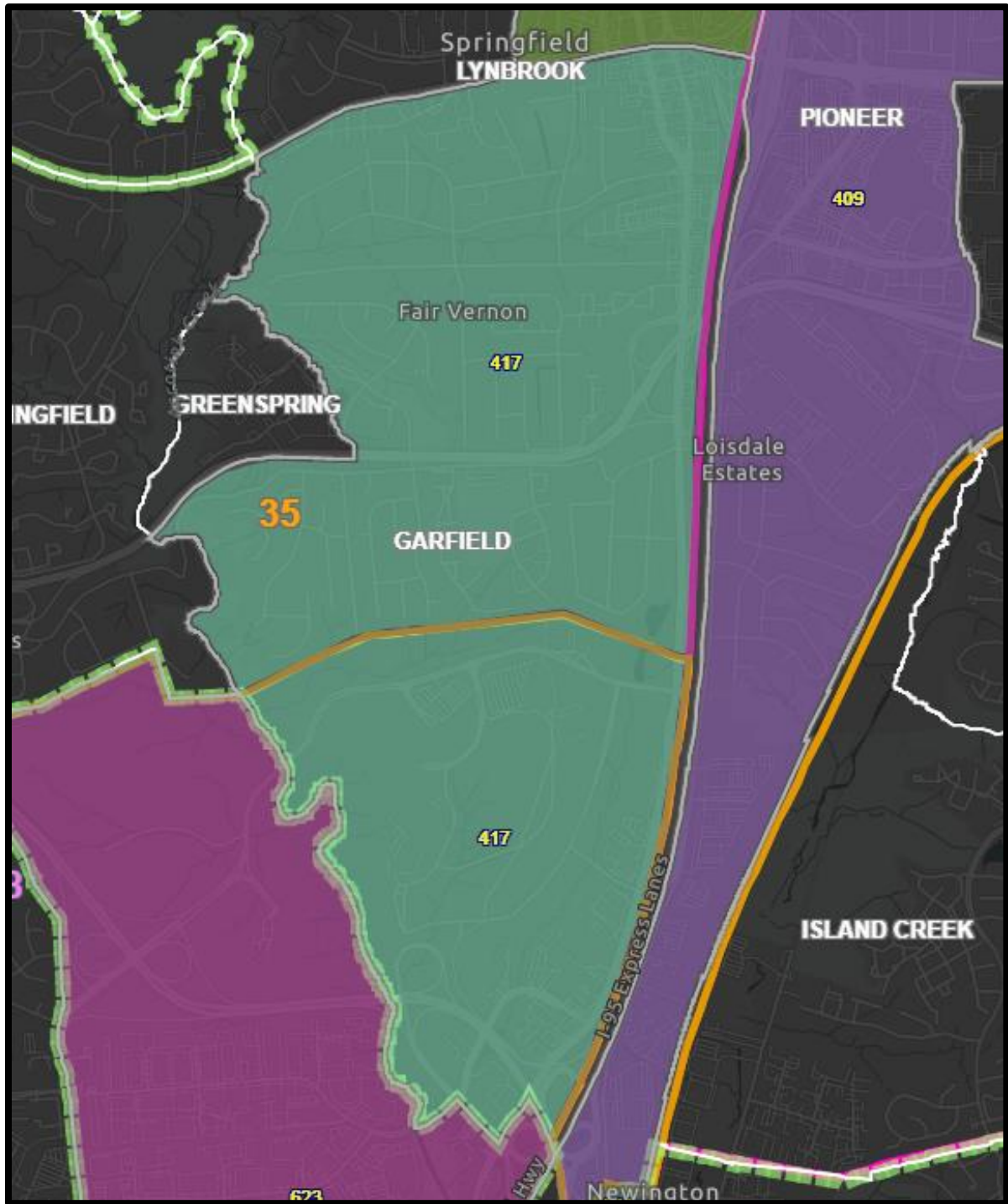


Figure D3



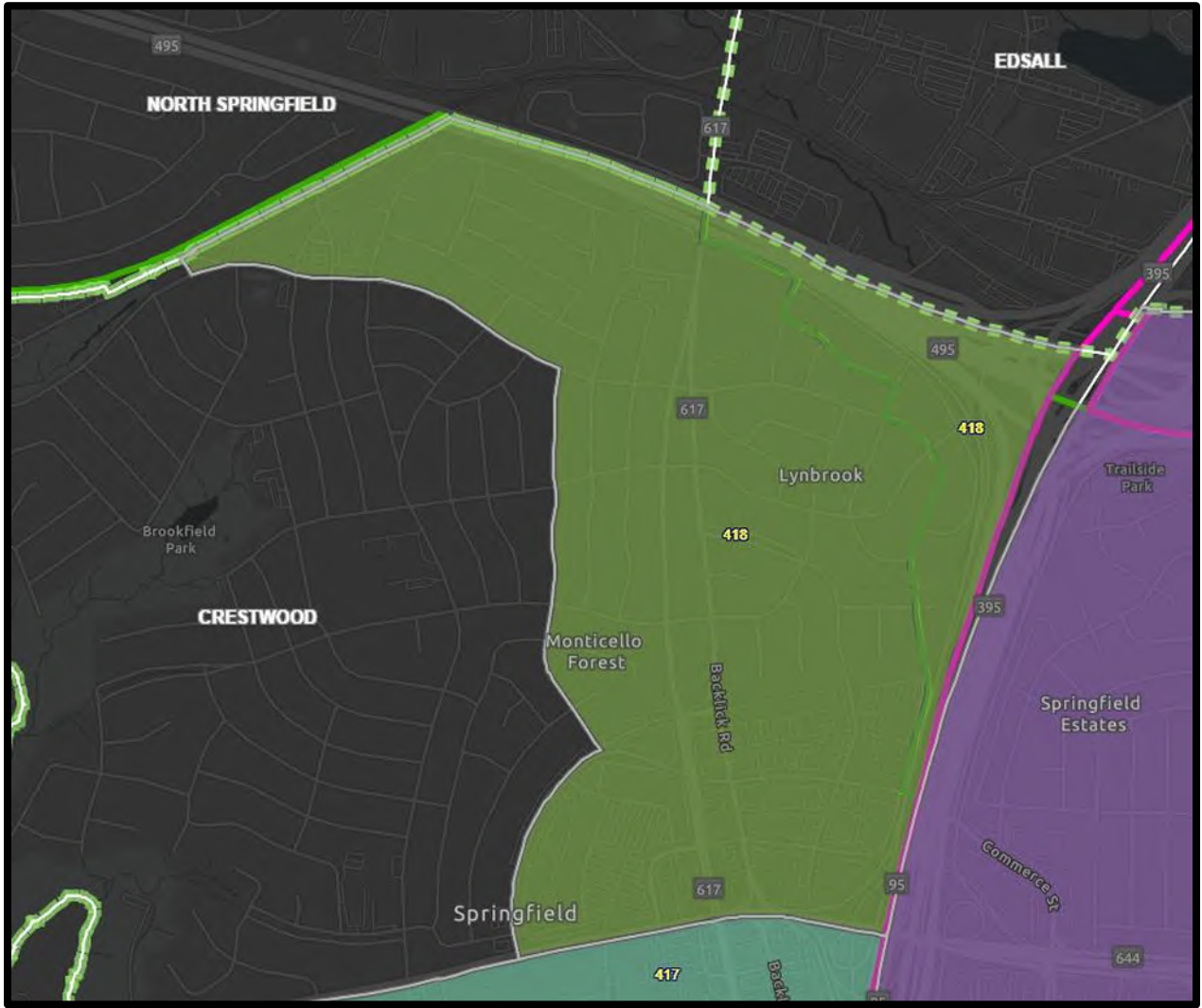


Figure D4

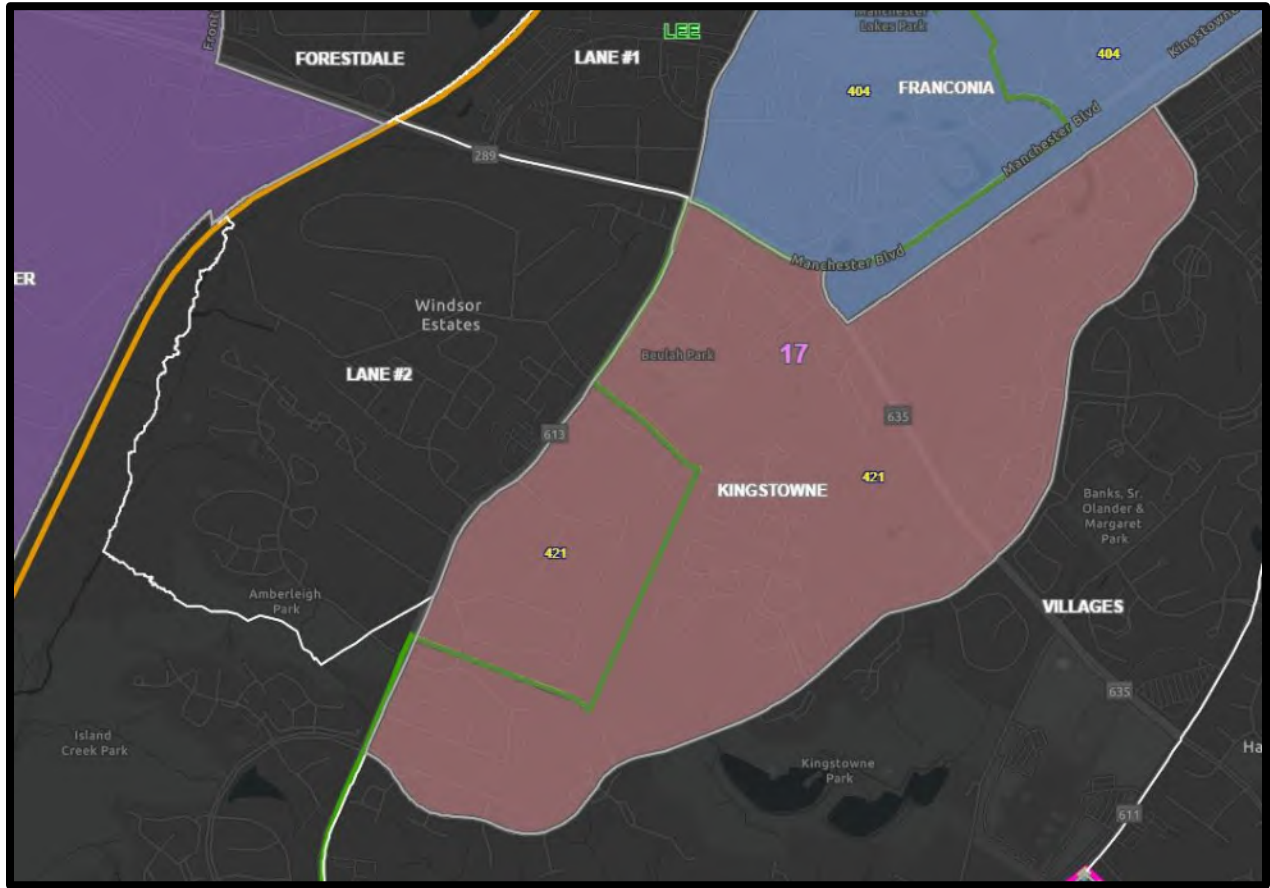


Figure D5



Figure D6

# 500s – MASON DISTRICT

Supervisor Penelope A. Gross

1. **501 BAILEYS #1** and **531 BAILEYS #2**, previously divided by a political boundary, now share common attributes.
  - a. Merge 501 BAILEYS #1 (2,311 voters) and 531 BAILEYS #2 (1,467 voters) and rename the precinct 501 BAILEYS (3,778 voters) that will continue to vote at Bailey’s Community Center (*fig. E1*).
2. **508 MASONVILLE** and **511 RAVENWOOD** were split due to redistricting.
  - a. Maintain the southern part of 508 MASONVILLE (2,269) that will continue to vote at Mason Crest Elementary School (*fig. E2*).
  - b. Maintain the eastern part of 511 RAVENWOOD (1,854 voters) that will continue to vote at Justice High School (*fig. E2*).
  - c. Absorb the western part of 511 RAVENWOOD (930 voters) and the northern part of 508 MASONVILLE (876 voters) into 512 SLEEPY HOLLOW (1,591 voters) and maintain as 512 SLEEPY HOLLOW (3,397 voters) that will vote at Beech Tree Elementary School (*fig. E2*).
3. **516 WEYANOKE #1** and **532 WEYANOKE #2**, previously divided by a political boundary, now share common attributes.
  - a. Merge 516 WEYANOKE #1 (1,508 voters) and 532 WEYANOKE #2 (2,152 voters) and rename the precinct 516 WEYANOKE (3,660 voters) that will continue to vote at Holmes Middle School (*fig. E3*).
4. **517 WILLSTON** was split due to redistricting. **703 FORT BUFFALO** was re-assigned to the Mason District.
  - a. Maintain the main part of 517 WILLSTON (2,178 voters) as a precinct that will continue to vote at the Willston Instructional Center (*fig. E4*).
  - b. Absorb the small northwestern part of 517 WILLSTON with no registered voters into 535 FORT BUFFALO (2,369 voters) that will vote at James Lee Community Center (*fig. E4*).
5. **528 RIDGELEA** was split due to redistricting. **522 CAMELOT #1** and **534 CAMELOT #2**, previously divided by a political boundary, now share common attributes.
  - a. Maintain the western part of 528 RIDGELEA (632 voters) as a precinct that will continue to vote at Bethlehem Lutheran Church (*fig. E5*).
  - b. Merge the eastern part of 528 RIDGELEA (758 voters), 522 CAMELOT #1 (357 voters), and 534 CAMELOT #2 (1,158 voters) and re-name the precinct 522 CAMELOT (2,273 voters) that will continue to vote at Camelot Elementary School (*fig. E5*).
6. **530 HOLMES #2** was split due to redistricting. A small portion of **511 RAVENWOOD** will be moved to an adjoining precinct.
  - a. Merge the eastern part of 530 HOLMES #2 (110 voters) and 506 HOLMES #1 (748 voters) and rename the precinct 506 HOLMES (858 voters) that will continue to vote at Woodrow Wilson Library (*fig. E6*).

- b. Merge a small eastern portion of 511 RAVENWOOD (30 voters) and the western part of 530 HOLMES #2 (1,994 voters) to create 530 TRIPPS (2,024 voters) and establish its polling place at Bailey's Elementary School (*fig. E7*).
- 7. **717 WOODBURN** was split during county-level redistricting, leaving the section to the east of the Capital Beltway in Mason District.
  - a. Using the eastern part (1,429 voters) located in Mason district, create 536 WOODBURN (1,429 voters) and continue to vote at Woodburn Elementary School (*fig. E8*).

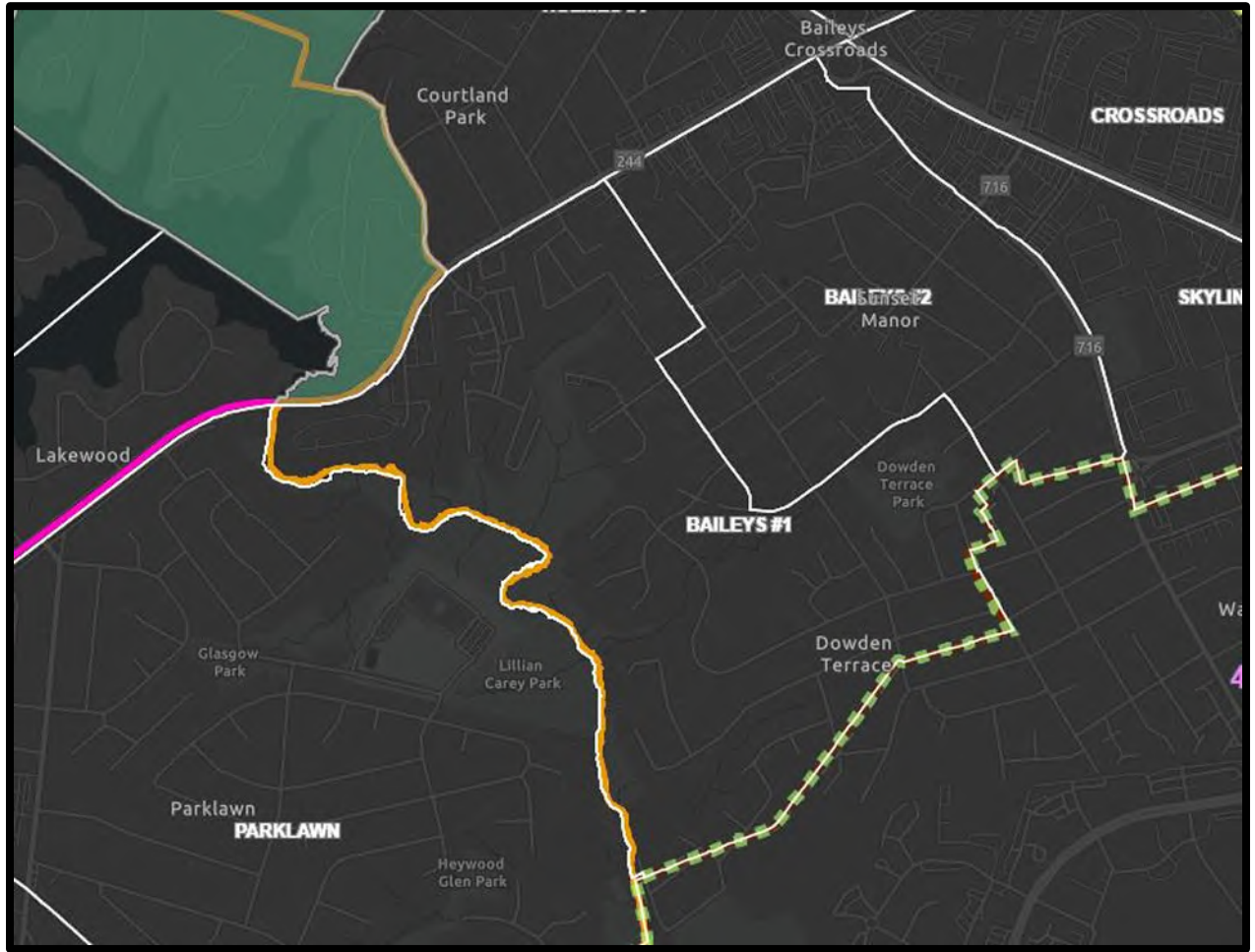


Figure E1

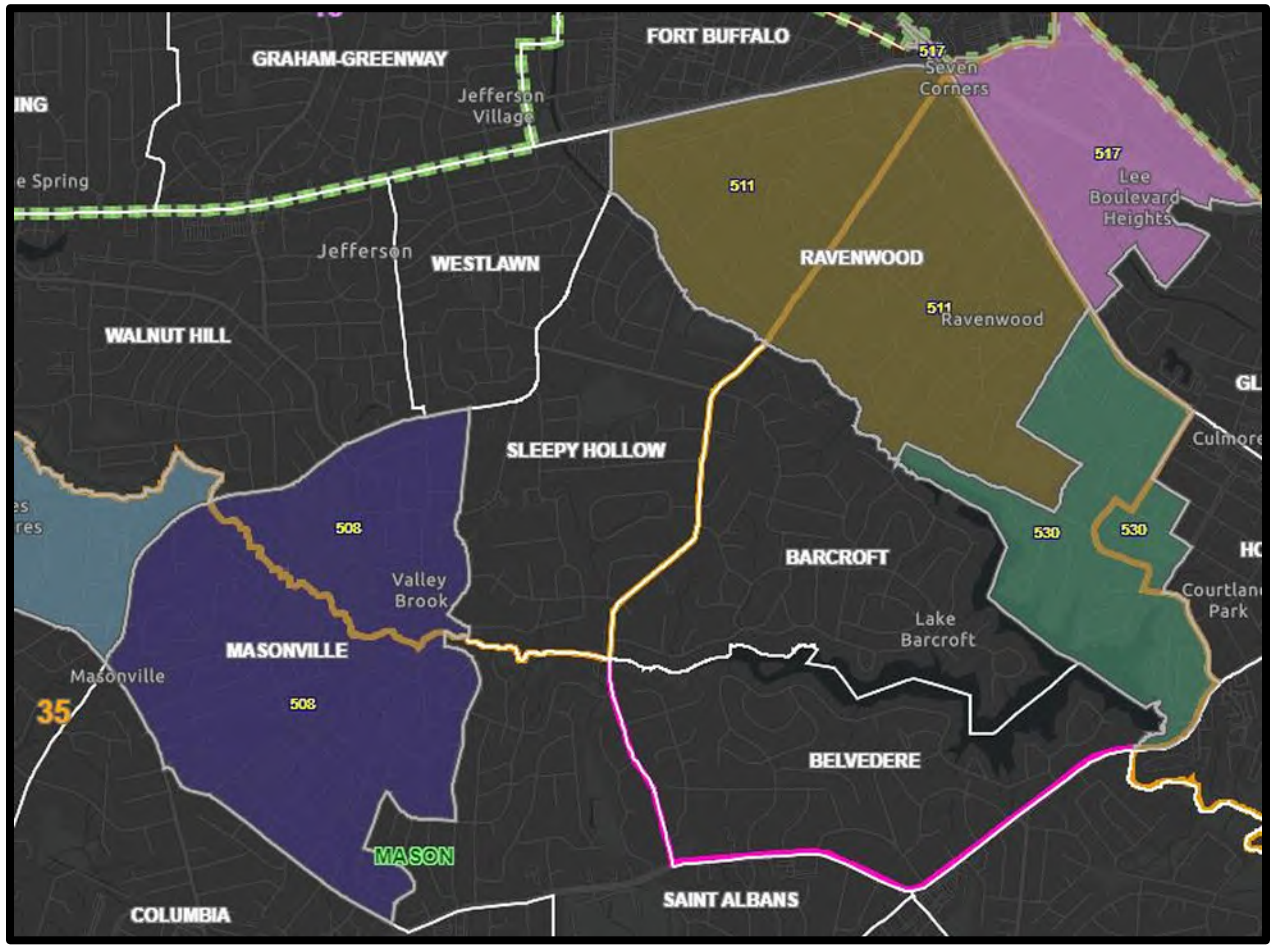


Figure E2

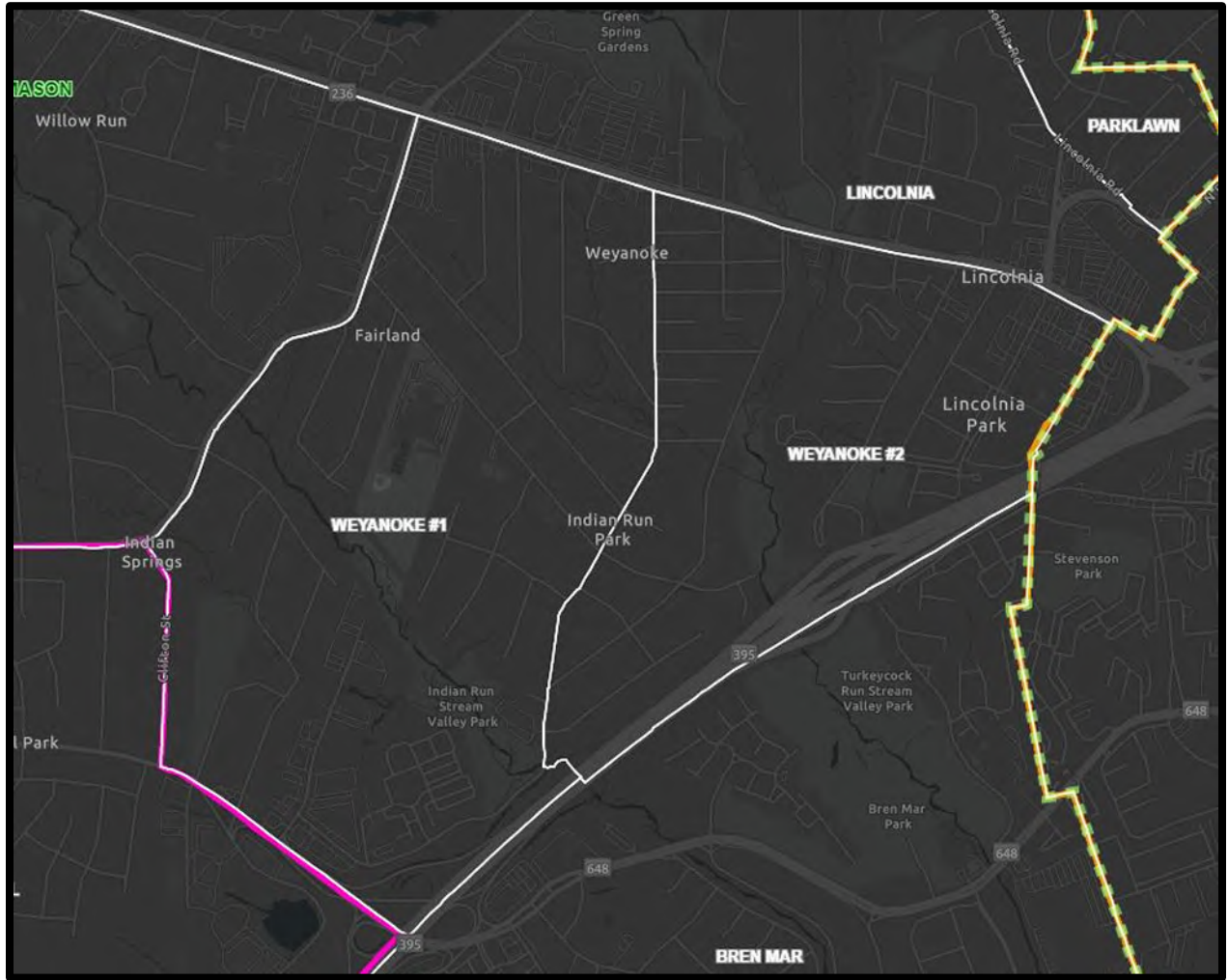


Figure E3



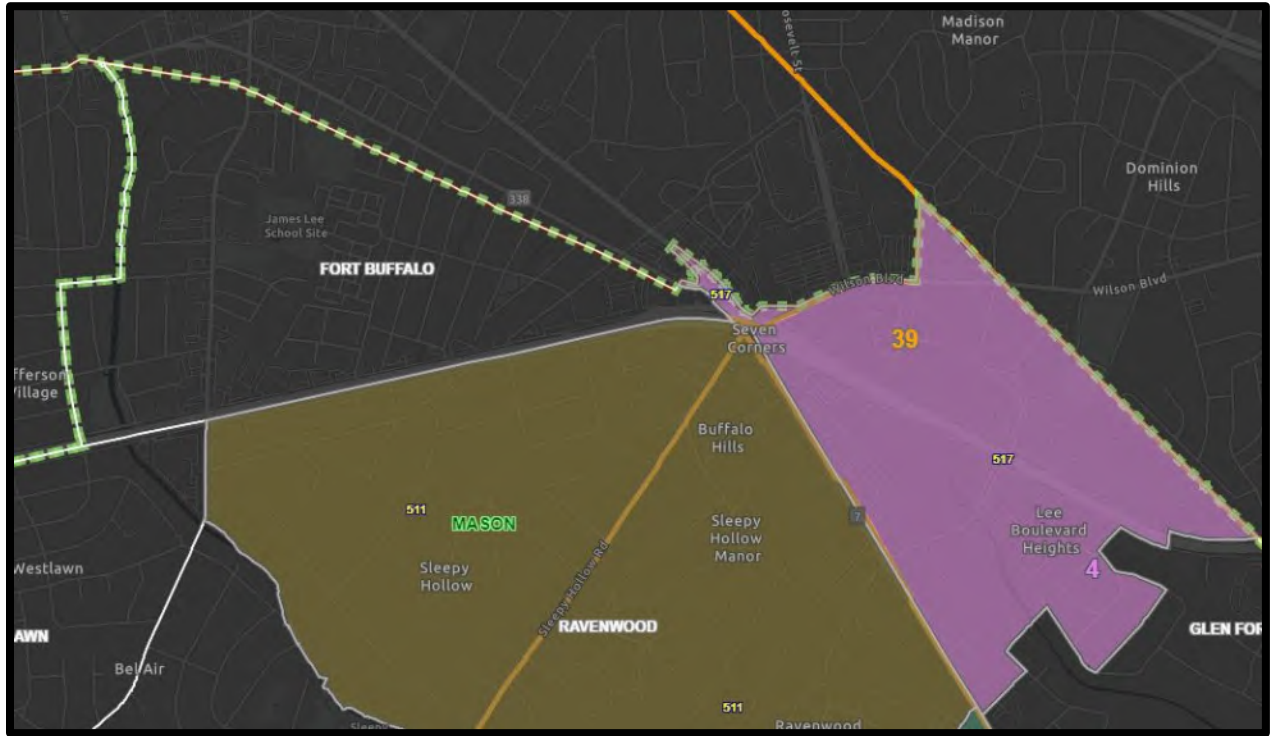


Figure E4

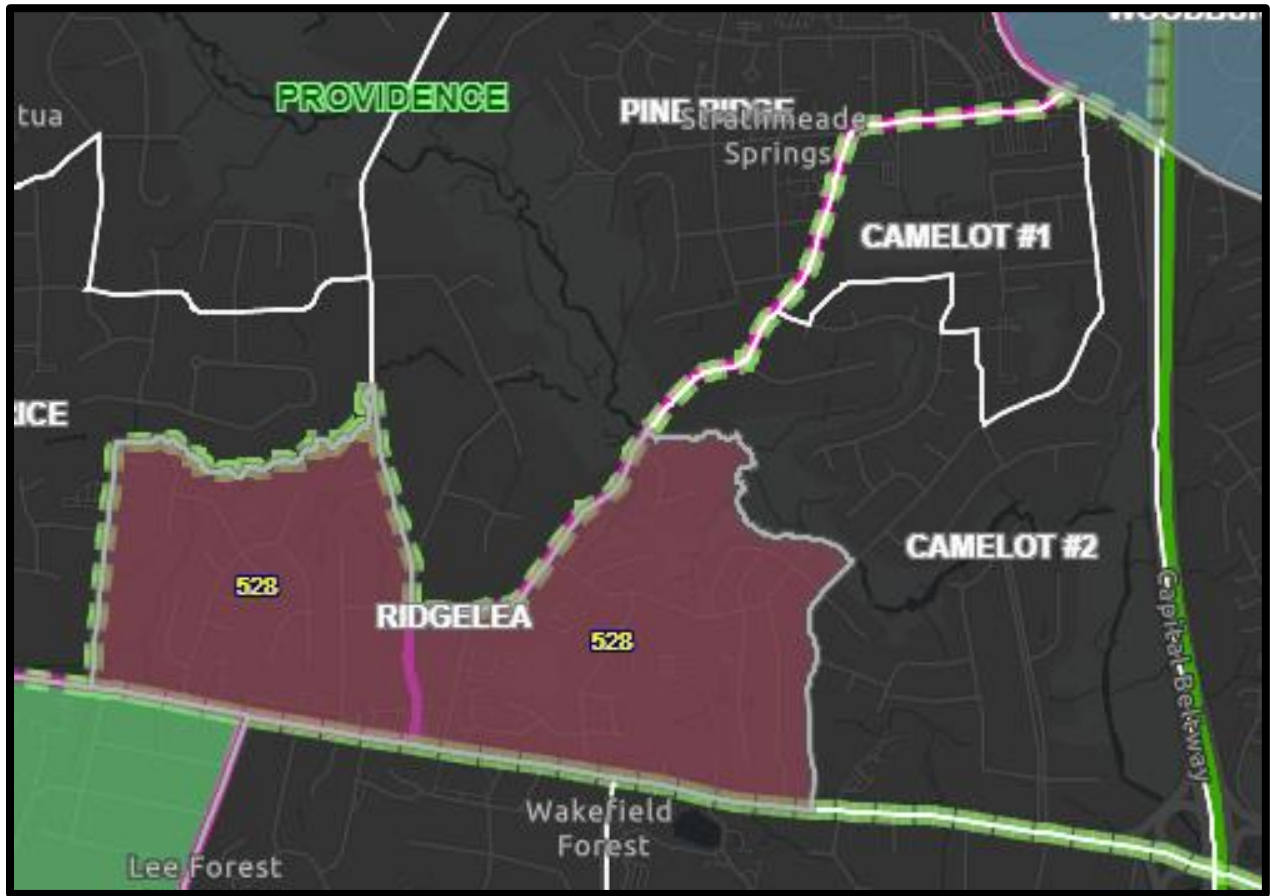


Figure E5

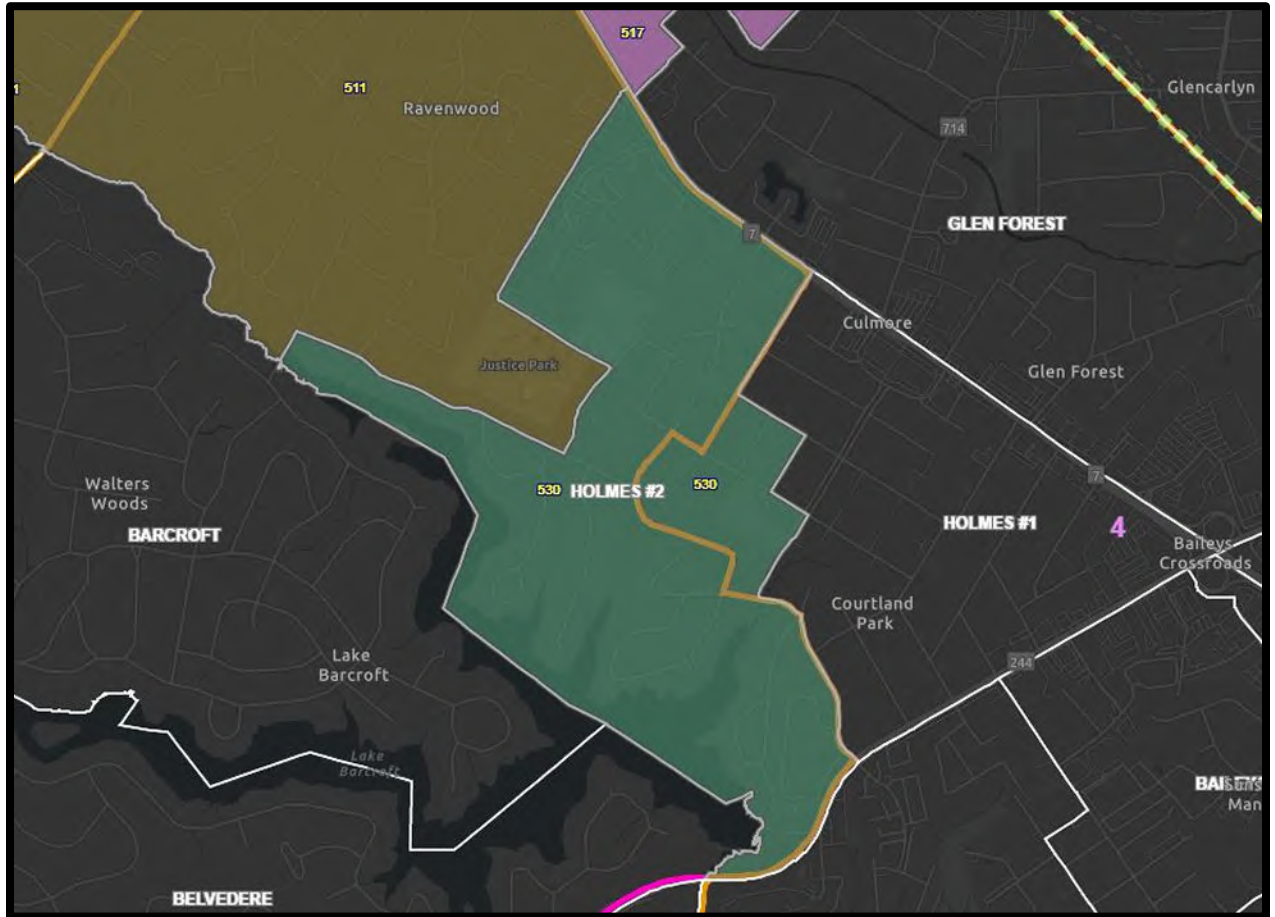


Figure E6

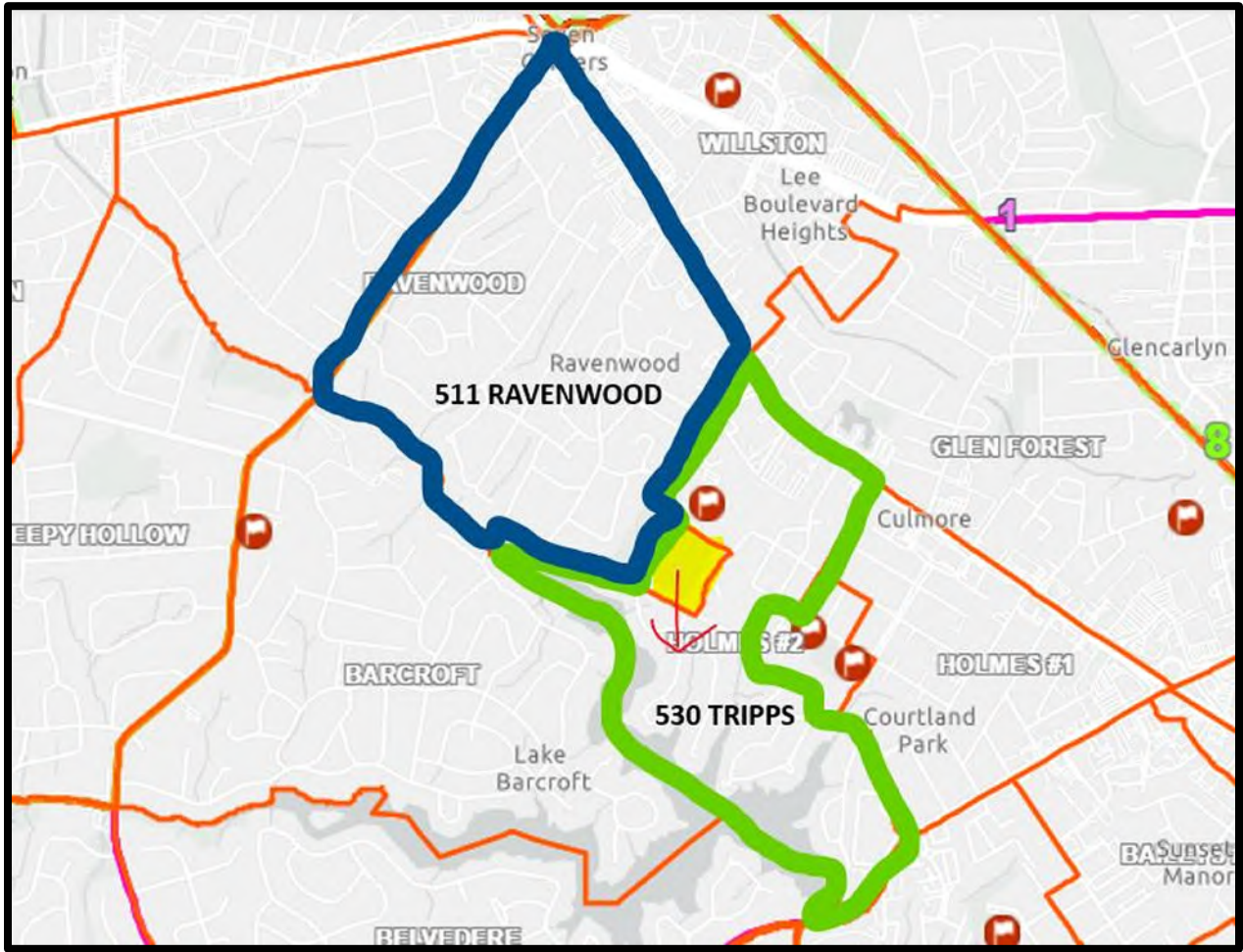


Figure E7

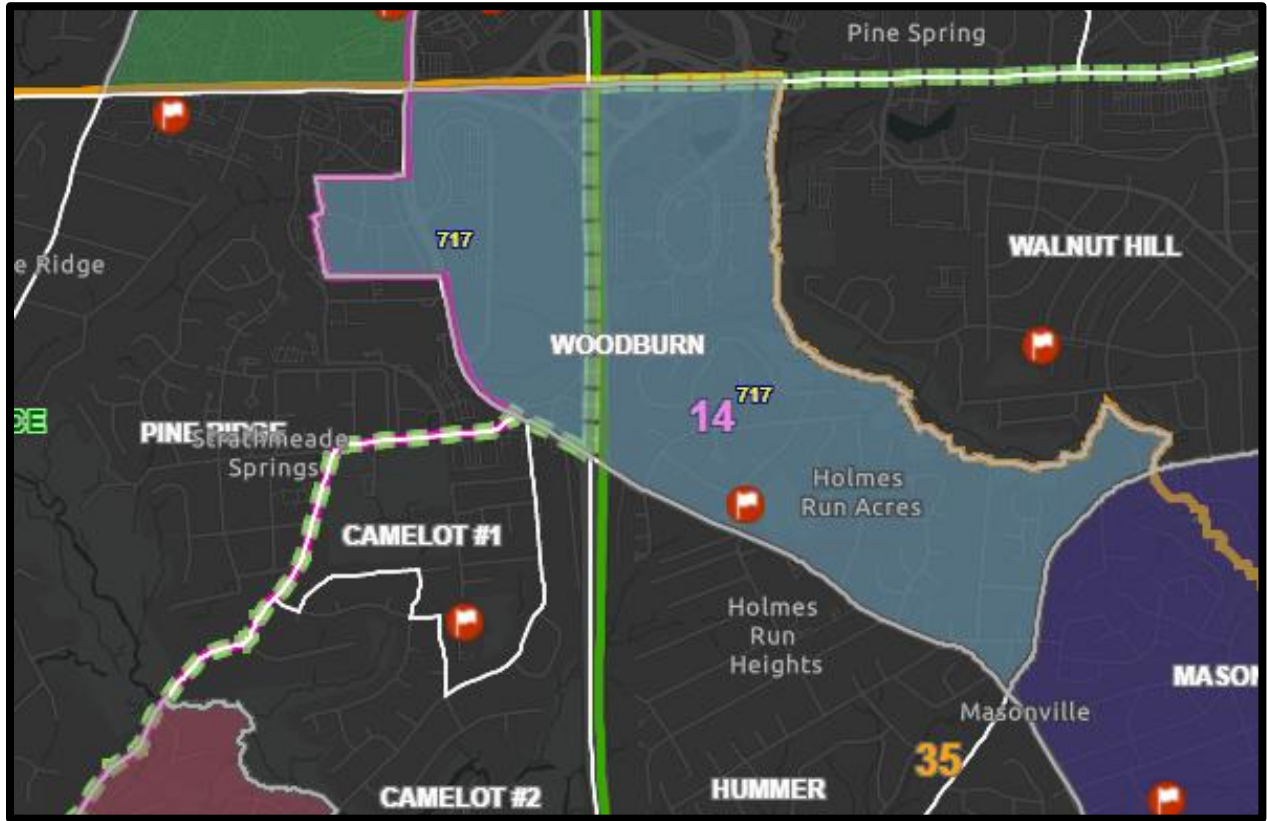


Figure E8

# 600s – MOUNT VERNON DISTRICT

Supervisor Daniel G. Storck

1. **601 BELLE HAVEN** and **602 BELLEVIEW** were divided and re-apportioned to allow some voters a closer polling place at West Potomac High School.
  - a. Maintain the large part of 602 BELLEVIEW (2,423 voters) as a precinct as a precinct that will continue to vote at Belle View Elementary School (*fig. F1*).
  - b. Absorb the small northwestern piece of 602 BELLEVIEW (166 voters) into 601 BELLE HAVEN (2,466 voters) and maintain as 601 BELLE HAVEN (2,632 voters) that will vote at West Potomac High School (*fig. F1*).
  
2. **613 WESTGATE** and **616 GUNSTON** were split due to redistricting.
  - a. Maintain the northeastern part of 613 WESTGATE (3,581 voters) as a precinct that will continue to vote at Washington Mill Elementary School (*fig. F2*).
  - b. Merge the southwestern part of 613 WESTGATE with no registered voters and the eastern part of 616 GUNSTON (1,690 voters) that will vote at Gunston Elementary School (*fig. F2*).
  - c. Absorb the northwestern part of 616 GUNSTON (1,226 voters) into 617 LORTON (2,909 voters) and maintain as 617 LORTON (4,135 voters) that will co-locate and vote at Lorton Station Elementary School (*fig. F2*).
  
3. **627 WOODLAWN** was split into two parts and **619 BELVOIR** was split into three parts due to redistricting.
  - a. Maintain the eastern portion of 627 WOODLAWN (1,890 voters) as 627 WOODLAWN #1 (1,890 voters) to co-locate and continue to vote at the Knights of Columbus #5998 (*fig. F3*).
  - b. Merge the southeastern part of 619 BELVOIR with no registered voters and the western part of 627 WOODLAWN (2,641 voters) into 627 WOODLAWN #2 (2,641 voters) that will co-locate and continue to vote at the Knights of Columbus #5998 (*fig. F3*).
  - c. Absorb the northwestern part of 619 BELVOIR (1,668 voters) into 630 ARMY (801 voters) and maintain as 630 ARMY (2,469 voters) and relocate the polling place from Kingstowne Library (which will be closed and re-located farther than one mile from the precinct boundary) to the Newington DVS (*fig. F3*).
  - d. Create a precinct 631 POHICK CREEK from the southwestern part of 619 BELVOIR (2,457 voters) and co-locate and establish its polling place at Lorton Station Elementary School (*fig. F3*).
  
4. **622 LORTON STATION**, **623 ALBAN**, and **628 LAUREL HILL** were split due to redistricting. **618 NEWINGTON**, which had more than 5,000 voters, was divided along the South Run Stream Valley.
  - a. Merge the central part of 628 LAUREL HILL (3,490 voters) and the northwestern part of 622 LORTON STATION with no registered voters as 628 LAUREL HILL #1 (3,490 voters) (*fig. F4*).
  - b. Maintain the southern part of 628 LAUREL HILL (1,637 voters) as precinct 636 LAUREL HILL #2 to co-locate and continue to vote at Laurel Hill Elementary School (*fig. F4*).
  - c. Absorb the eastern part of 628 LAUREL HILL with no registered voters into 622 LORTON STATION and continue to co-locate and vote at Lorton Station Elementary School (*fig. F4*).
  - d. Maintain the northern part of 618 NEWINGTON (2,387 voters) as 618 NEWINGTON #1 to co-locate and continue to vote at Newington Forest Elementary School (*fig. F5*).

- e. Merge the southern part of 618 NEWINGTON (3,182 voters), the northernmost part of 628 LAUREL HILL (55 voters), and the southern part of 623 ALBAN (166 voters) into 634 NEWINGTON #2 (3,403 voters) that will co-locate and vote at Newington Forest Elementary School (*fig. F5*)
  - f. Maintain the northern part of 623 ALBAN (3,147 voters) as a precinct that will continue to vote at Saratoga Elementary School (2,138) (*fig. F6*).
5. **629 SOUTH COUNTY** was split into three parts due to redistricting.
- a. Maintain the eastern part as a precinct 629 SOUTH COUNTY (2,501 voters) that will continue to vote at South County High School (*fig. F7*).
  - b. Create 632 HALLEY #1 (1,125 voters) and 633 HALLEY #2 (338 voters) from the remaining two parts of 629 SOUTH COUNTY. Both precincts will co-locate and establish polling places at Halley Elementary School (*fig. F7*).

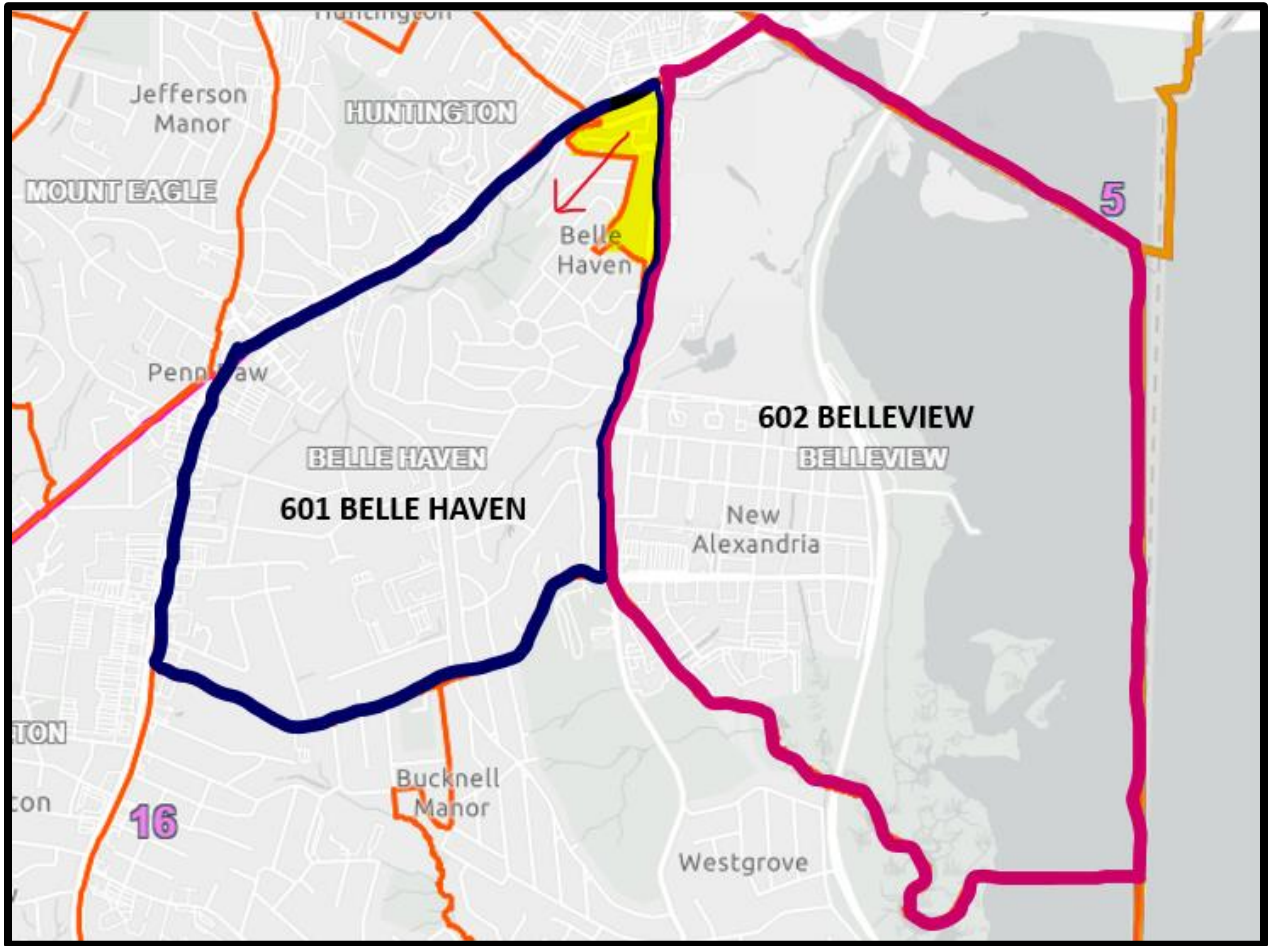


Figure F1



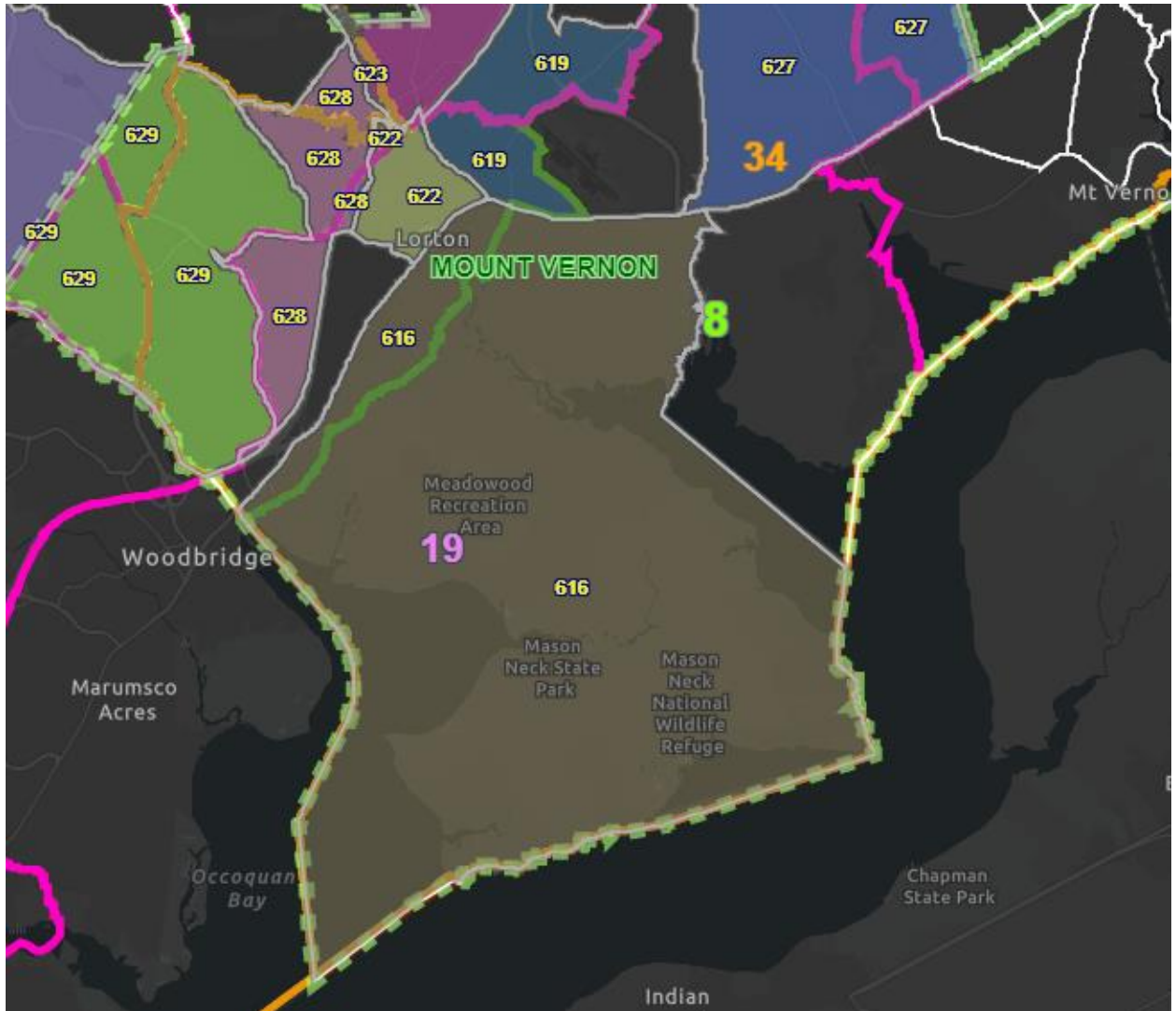


Figure F2



Figure F3

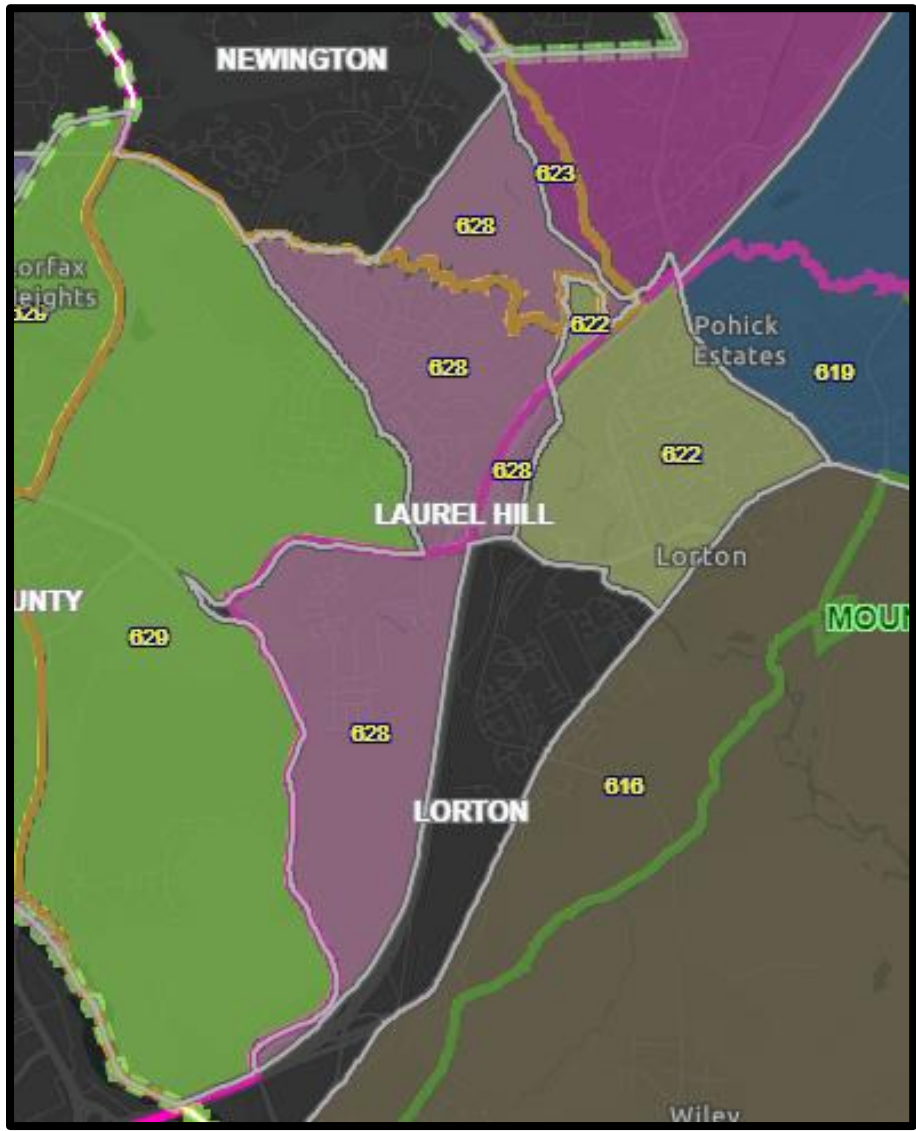


Figure F4

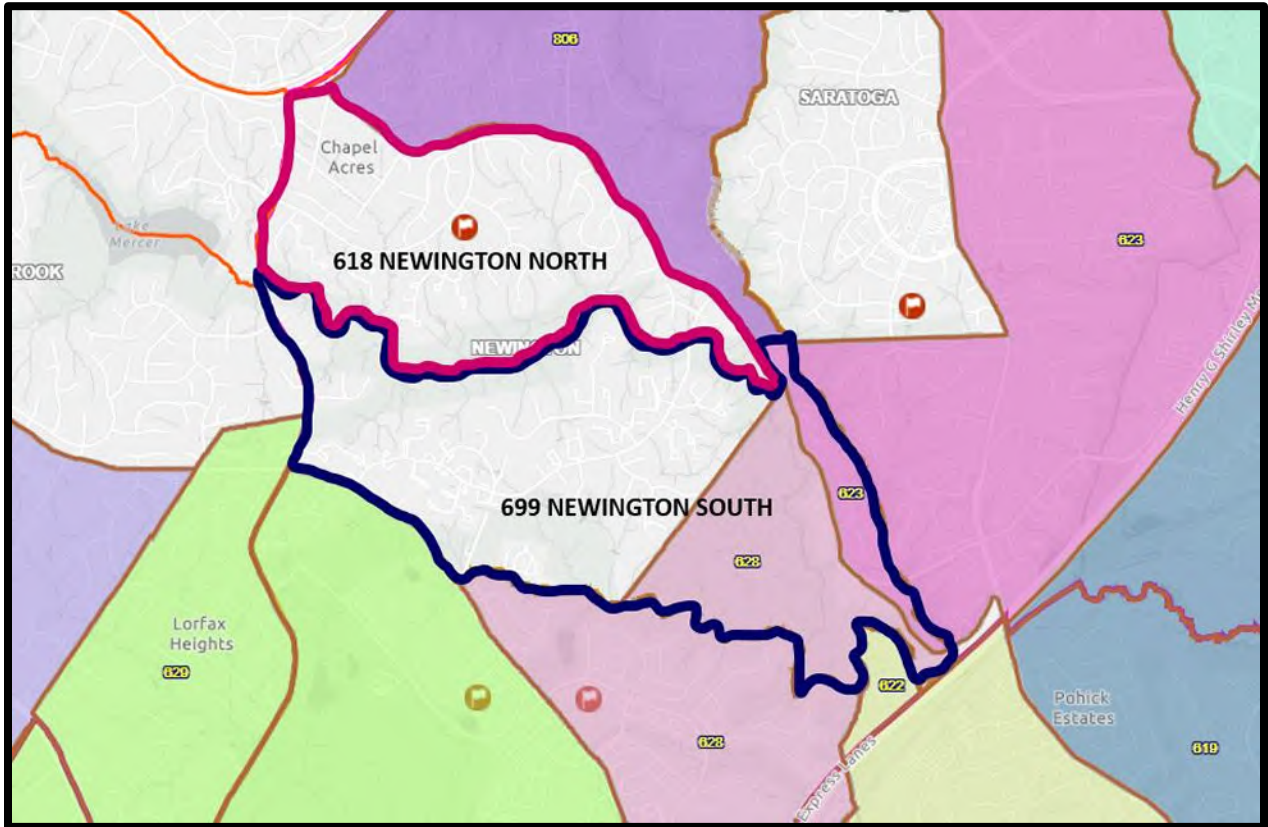


Figure F5

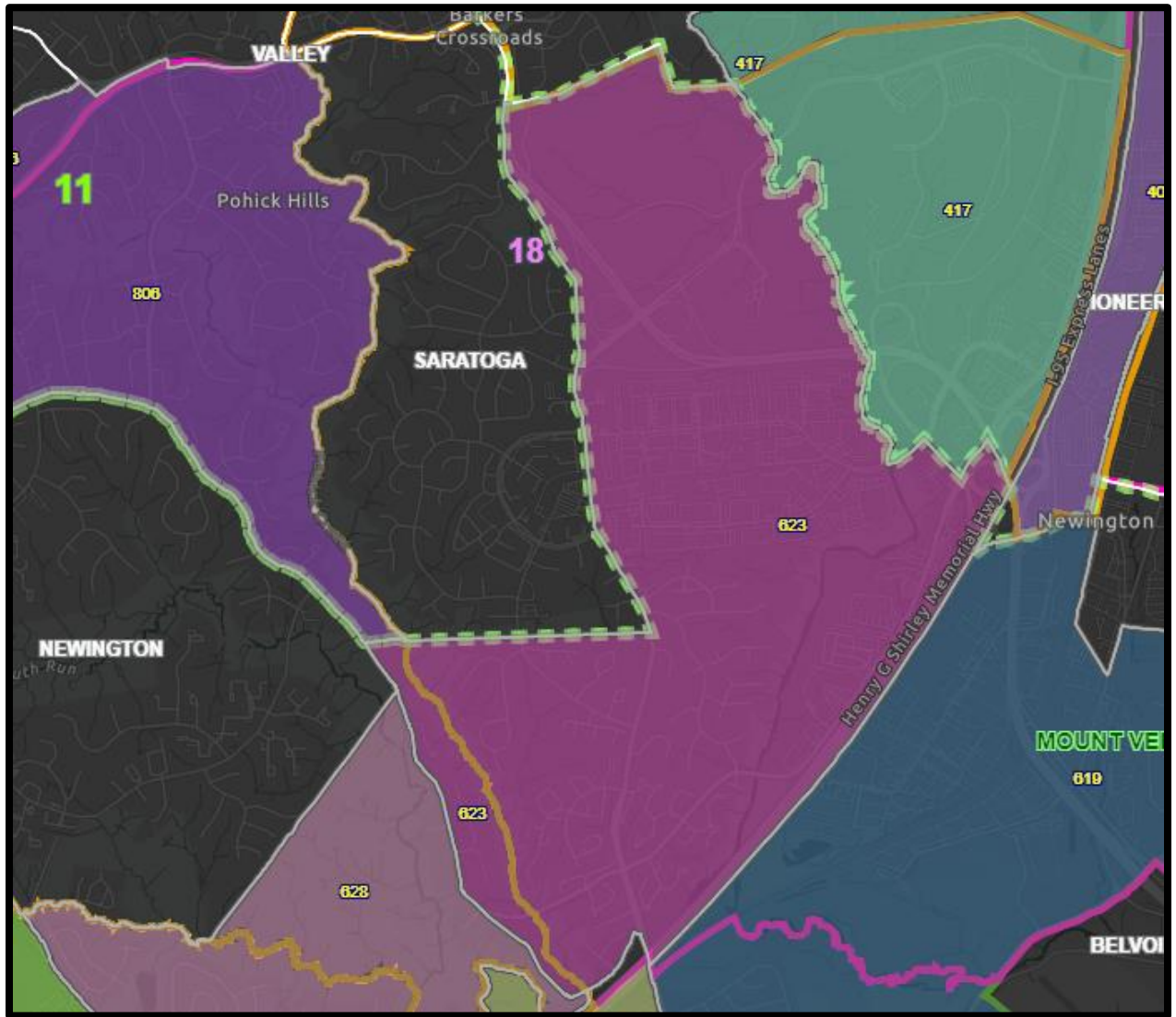


Figure F6

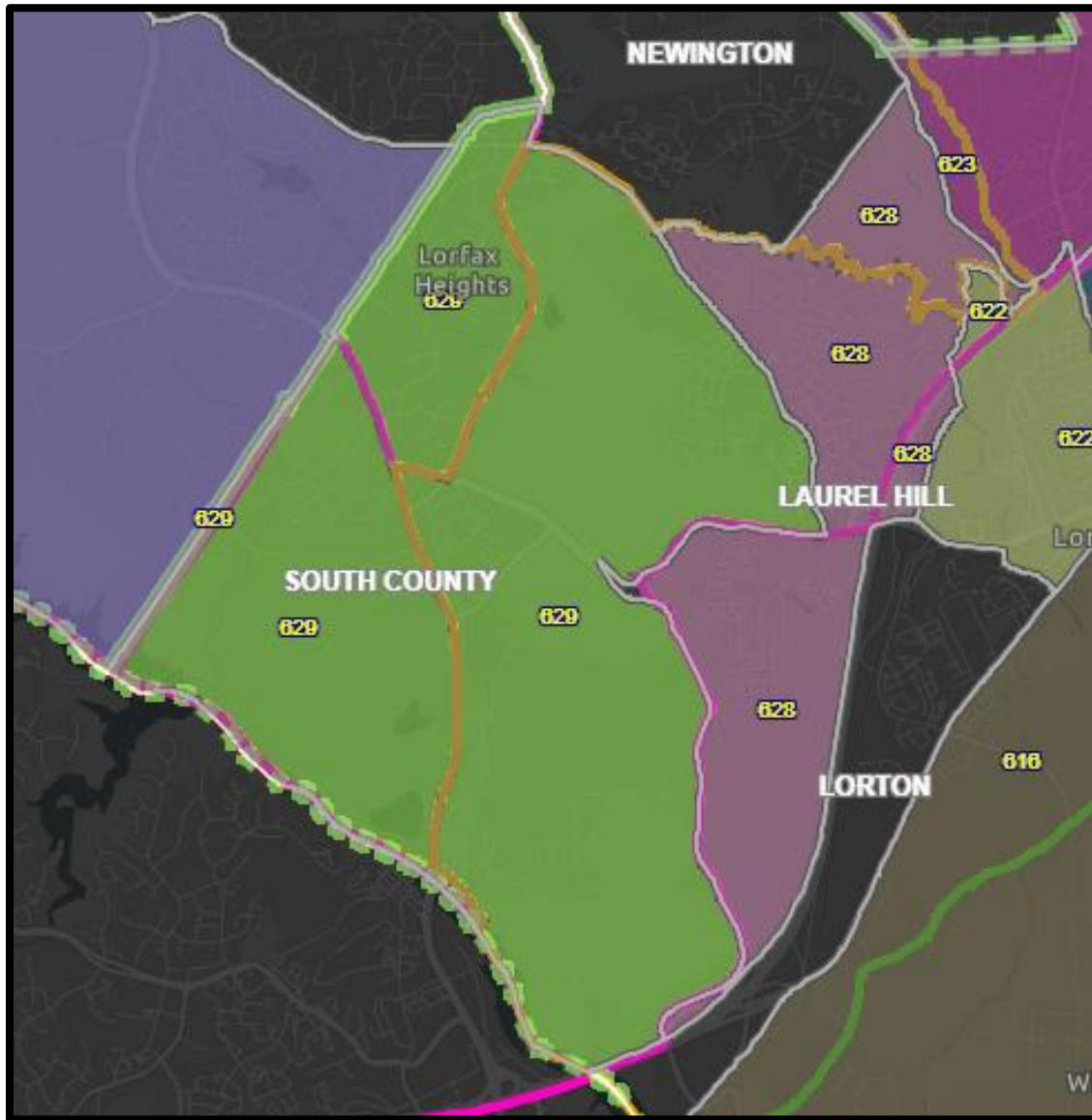


Figure F7

# 700s – PROVIDENCE DISTRICT

Supervisor Dalia A. Palchik

1. **709 MOSBY** was split due to redistricting.
  - a. Create 709 MOSBY #1 (2,794 voters) and 737 MOSBY #2 (1,202 voters) to co-locate and continue to vote at Mosaic Elementary School (*fig. G1*).
  
2. **717 WOODBURN** was split during county-level redistricting, leaving the section to the west of the Capital Beltway in the Providence District.
  - a. Using the western part (780 voters) located in Providence district, create 736 BEDFORD (780 voters) and establish its polling place at Luther Jackson Middle School (*fig. G2*).
  
3. **721 MERRIFIELD** was split due to redistricting.
  - a. Maintain the western part as 721 MERRIFIELD (4,833 voters) that will continue to vote at Luther Jackson Middle School (*fig. G3*).
  - b. Absorb the eastern part of 721 MERRIFIELD (253 voters) into 723 GALLOWS EAST (2,426 voters) and maintain as 723 GALLOWS EAST (2,679 voters) that will vote at the Gatehouse Administration Building (*fig. G3*).



Figure G1



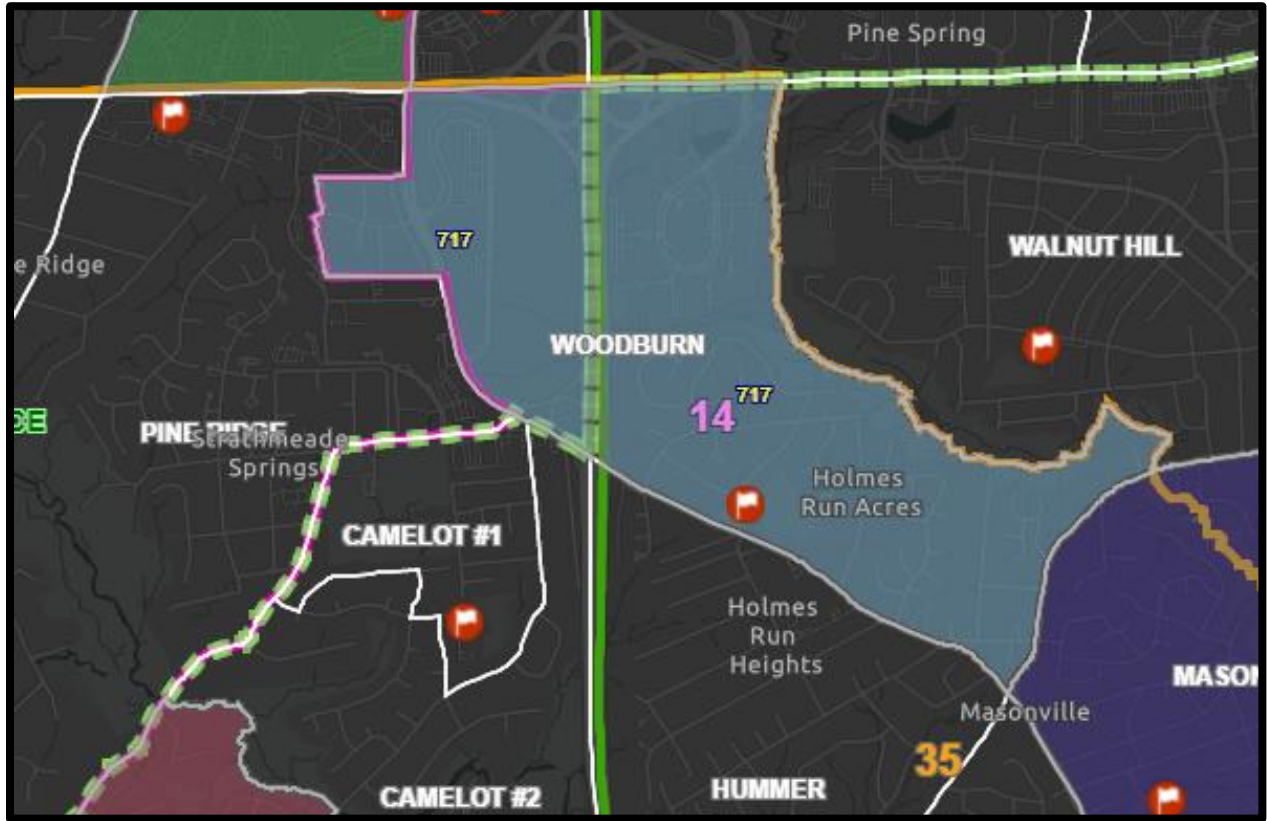


Figure G2

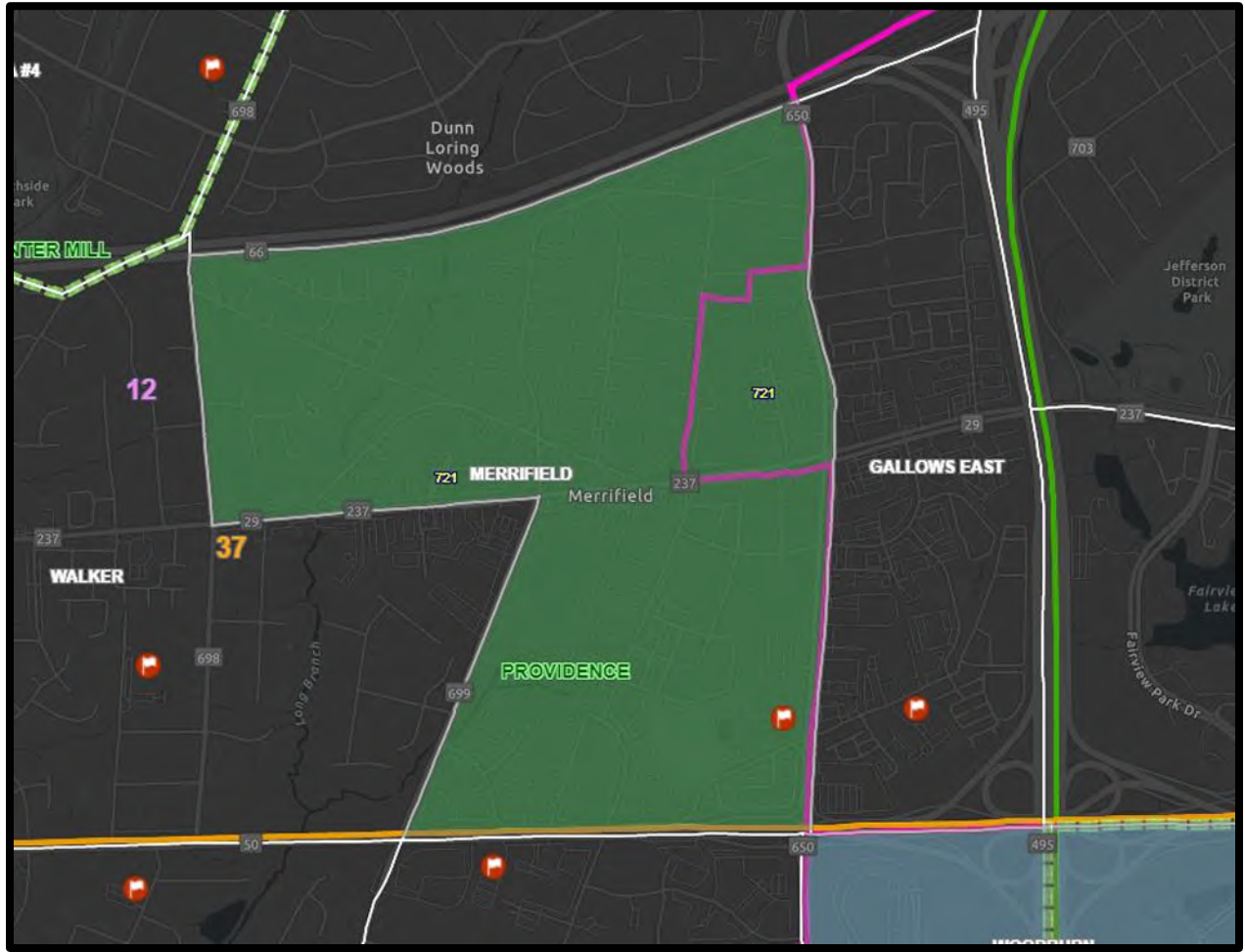


Figure G3

# 800s – SPRINGFIELD DISTRICT

Supervisor Pat Herrity

1. **626 SARATOGA** was re-assigned to Springfield District during county-level redistricting.
  - a. Maintain this precinct as 855 SARATOGA (3,880 voters) and continue to vote at Saratoga Elementary School.
  
2. **730 PENDERBROOK** was re-assigned into the Springfield District and was split into three parts due to redistricting.
  - a. Merge the small western part which has no registered voters and the central part (3,993 voters) and maintain 856 PENDERBROOK (3,993 voters) as a split precinct that will continue to vote at Penderbrook Community Center (*fig. H1*).
  - b. Create a new precinct for the eastern part 857 ISLAND POND (145 voters) and establish its polling place at Oak Marr Rec Center (*fig. H1*).
  
3. **801 BURKE** was split into three parts due to redistricting.
  - a. Merge the small western part which has no registered voters and the central part (2,987 voters) and maintain 801 BURKE #1 (2,987 voters) as a split precinct to co-locate and continue to vote at West Springfield High School (*fig. H2*).
  - b. Establish 861 BURKE #2 (2,427 voters) to co-locate and continue to vote at West Springfield High School (*fig. H2*).
  
4. **806 SYDENSTRICKER** was split due to redistricting.
  - a. Maintain the southeastern part of 806 SYDENSTRICKER (3,425 voters) as a precinct that will continue to vote at Sydenstricker United Methodist Church (*fig. H3*).
  - b. Absorb the northwestern part of 806 SYDENSTRICKER (198 voters) into 807 HUNT VALLEY (2,321 voters) and maintain as 807 HUNT VALLEY (2,519 voters) that will vote at Hunt Valley Elementary School (*fig. H3*).
  
5. **804 COLCHESTER, 815 WOODYARD, 845 FOUNTAINHEAD, and 851 WILLOW SPRINGS** (three parts) were split due to redistricting. **803 CLIFTON** was split due to redistricting; the main large part, which has over 5,000 voters, was further divided into three parts: an enclave for the Town of Clifton and parts to the north and south of the Norfolk Southern Railroad. To reduce the number of registered voters in **849 NEWGATE**, which has over 5,000 voters, it was also divided again (it was previously divided from 2008 to 2017). **933 COMPTON** was re-assigned to the Springfield district during county-level redistricting.
  - a. Maintain the northern part of 815 WOODYARD (1,664 voters) that will continue to vote at Antioch Baptist Church (*fig. H4*).
  - b. Maintain the southern part of 845 FOUNTAINHEAD (3,993 voters) as a precinct that will continue to vote at Christ Church (*fig. H4*).
  - c. Merge the southern part of 815 WOODYARD (993 voters) and the northern part of 845 FOUNTAINHEAD (293 voters) to create 860 SANDY RUN (1,286 voters) and establish its polling place at Christ Church. (*fig. H4*).
  - d. Merge the southern part of 803 CLIFTON (2,368 voters) and southern part of 815 WOODYARD (360 voters) to create 803 CLIFTON SOUTH (2,728 voters) and establish its polling place at Clifton Presbyterian Church (*fig. H5*).

- e. Create 858 CLIFTON TOWN (197 voters) using the political boundaries of the Town of Clifton, as required by Va. Code 24.2-222.1, that will co-locate with 803 CLIFTON SOUTH and establish its polling place at Clifton Presbyterian Church (*fig. H5*).
- f. Merge the northern part of 803 CLIFTON (2,180 voters) and the small western part of 804 COLCHESTER (32 voters) to create 859 LIBERTY (2,212 voters) and establish its polling place at Liberty Middle School (*fig. H6*).
- g. Merge the northern part of 849 NEWGATE (2,808 voters), the northwestern part of 803 CLIFTON (3 voters), and the western part of 851 WILLOW SPRINGS (79 voters) to create 849 NEWGATE NORTH (2,890 voters) and establish its polling place at Centreville High School (*fig. H7*).
- h. Merge the southern part of 849 NEWGATE (2,329 voters) and 933 COMPTON (865 voters) to create 854 NEWGATE SOUTH (3,194 voters) that will co-locate with 849 NEWGATE NORTH and establish its polling place at Centreville High School (*fig. H7*).
- i. Maintain the eastern part of 851 WILLOW SPRINGS (1,221 voters) as 851 WILLOW SPRINGS #1 that will continue to vote at Willow Springs Elementary School (*fig. H8*).
- j. Maintain the central part of 851 WILLOW SPRINGS (1,778 voters) as 862 WILLOW SPRINGS #2 that will co-locate with 851 WILLOW SPRINGS #1 and will continue to vote at Willow Springs Elementary School (*fig. H8*).

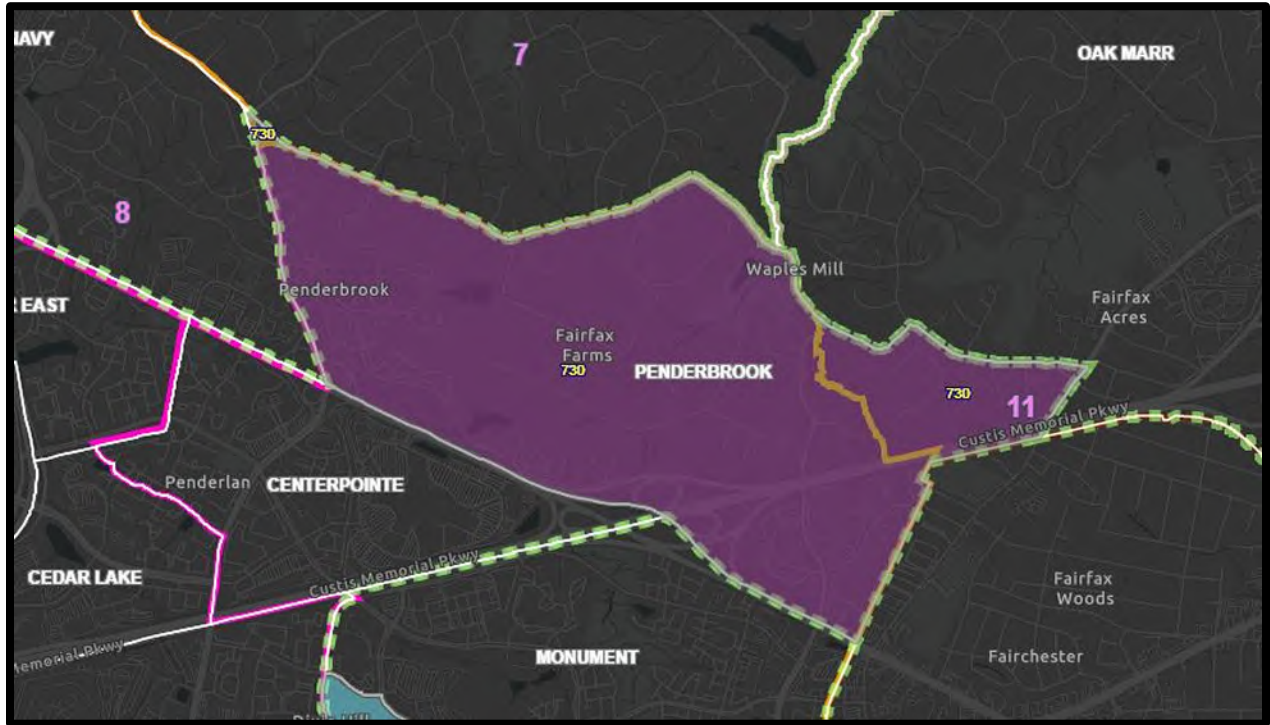


Figure H1

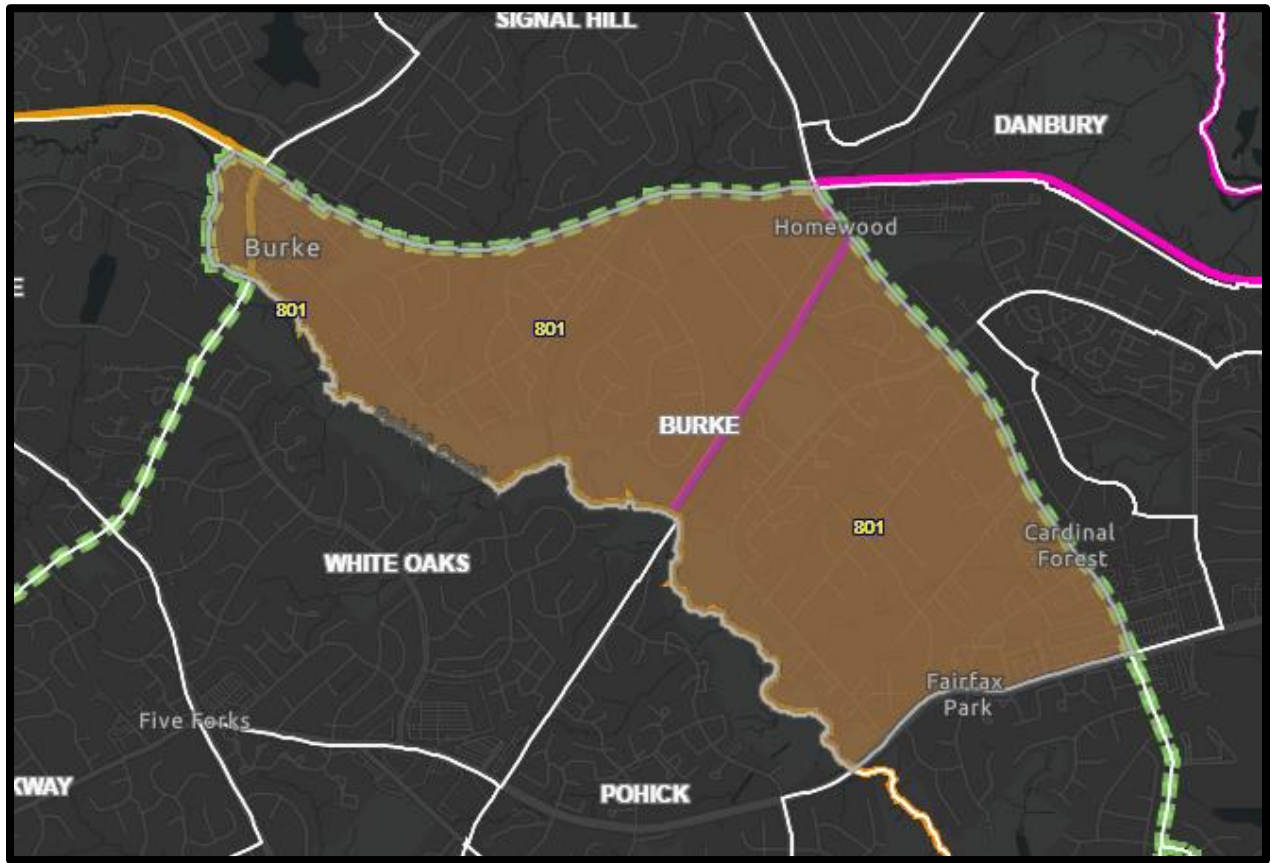


Figure H2

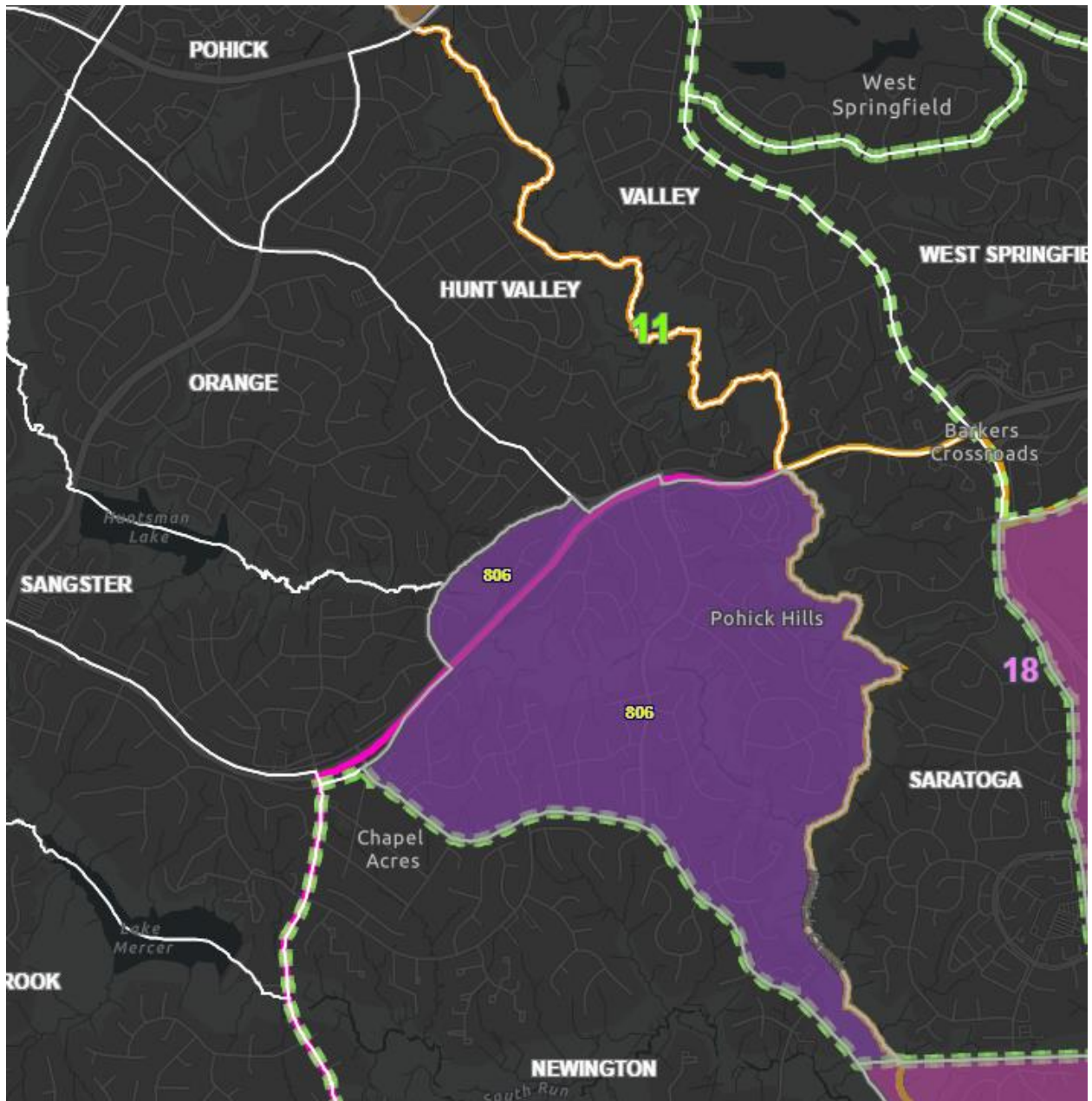


Figure H3

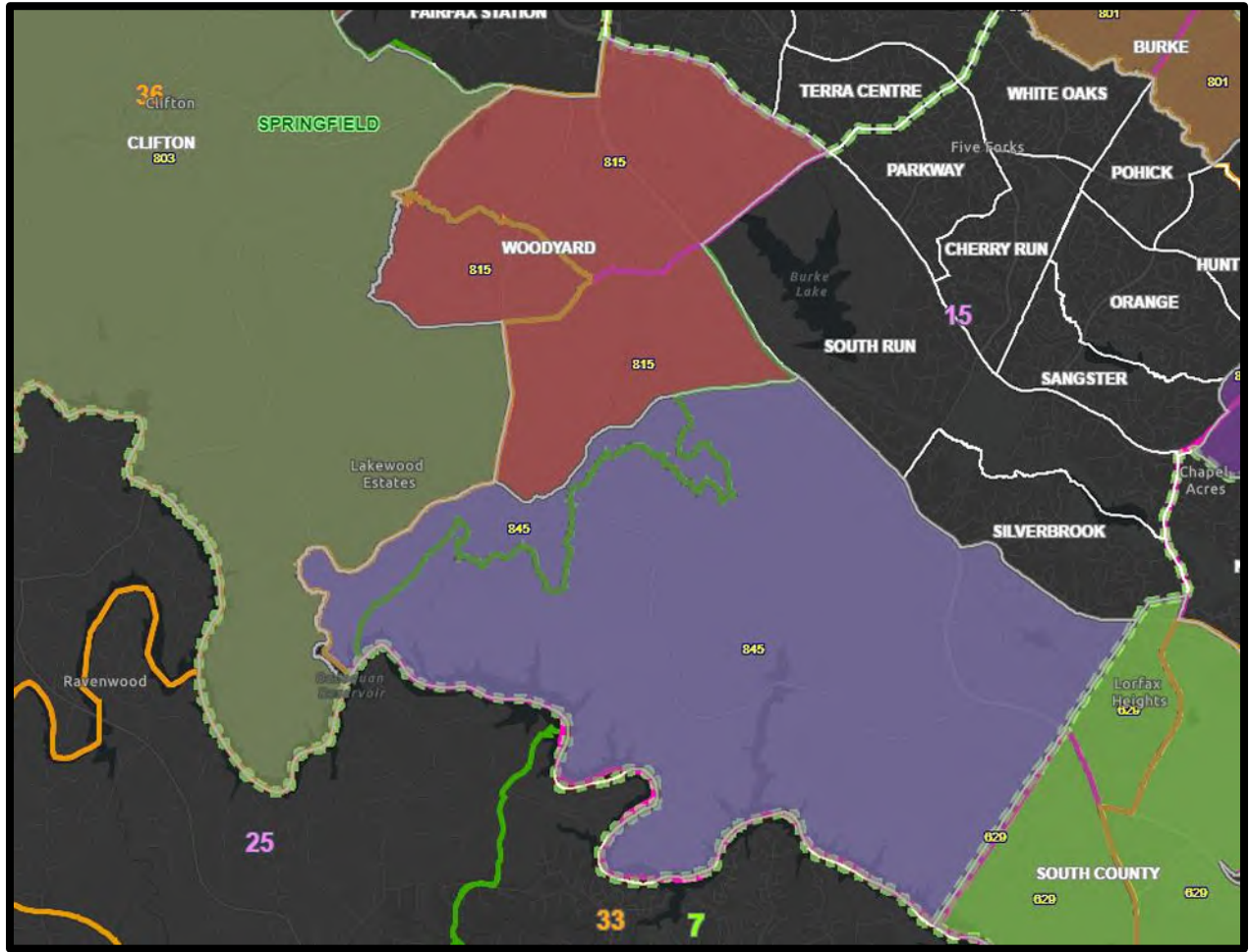


Figure H4





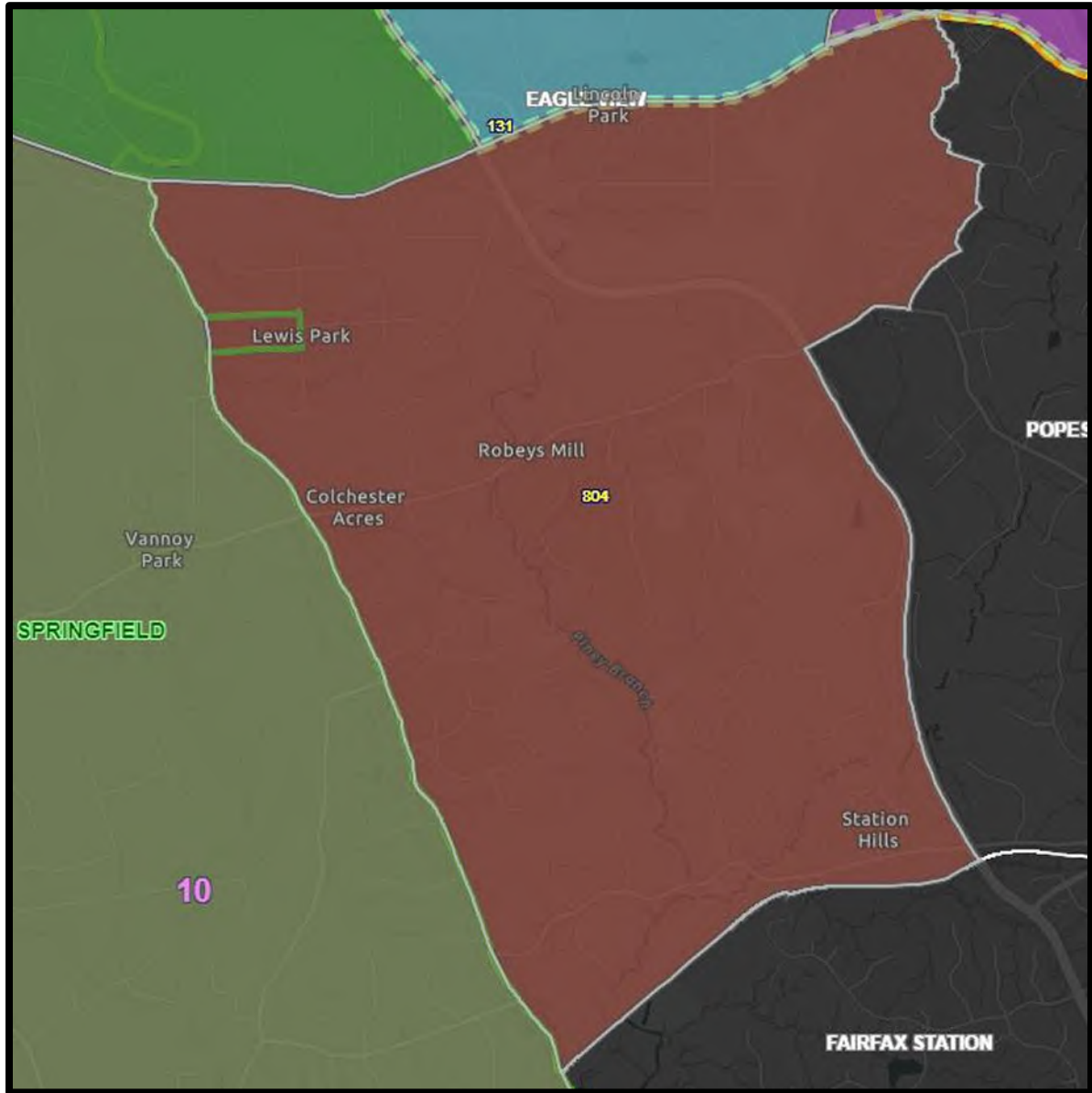


Figure H6

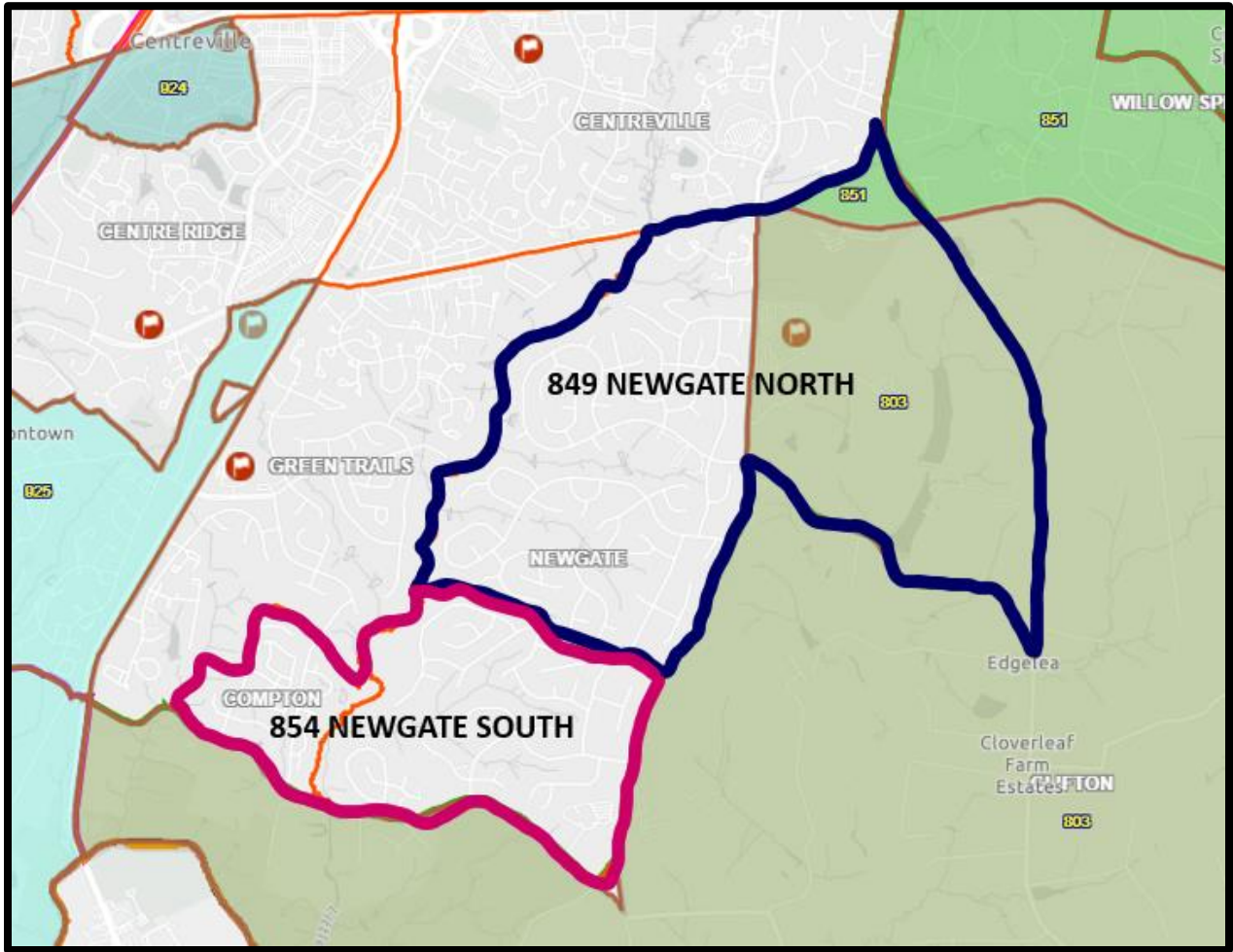


Figure H7



# 900s – SULLY DISTRICT

Supervisor Kathy L. Smith

1. **917 STONE NORTH** and **932 STONE SOUTH**, previously divided by a political boundary, now share common attributes.
  - a. Merge 917 STONE NORTH (2,182 voters) and 932 STONE SOUTH (2,021 voters) and rename the precinct 917 STONE (4,203 voters) that will continue to vote at Stone Middle School (*fig. J1*)
2. **920 CHANTILLY** and **930 LEES CORNER** were split due to redistricting.
  - a. Absorb the northern part of 930 LEES CORNER (1,978 voters) into 905 FRANKLIN (905 voters) and maintain as 905 FRANKLIN (2,883 voters) that will vote at Franklin Middle School (*fig. J2*).
  - b. Merge the southeastern part of 930 LEES CORNER (433 voters) and the southwestern part of 920 CHANTILLY (1,052 voters) to create a new precinct 934 FOX VALLEY (1,485 voters) and establish its polling place at Lees Corner Elementary School (*fig. J2*).
  - c. Maintain the remaining eastern section as 920 CHANTILLY (2,406 voters) that will continue to vote at Chantilly High School (*fig. J2*).
3. **921 DEER PARK** was split into two sections due to redistricting. **924 SPINDLE** was split into three parts. **926 POWELL**, which has more than 5,000 voters, was divided along Sully Road.
  - a. Maintain the southern part of 921 DEER PARK (3,599 voters) as a precinct that will continue to vote at Deer Park Elementary School (*fig. J3*).
  - b. Absorb the northern part of 921 DEER PARK (72 voters) and the southwestern part of 924 SPINDLE with no registered voters into 915 VIRGINIA RUN (2,925 voters) and maintain as 915 VIRGINIA RUN (2,997 voters) that will vote at Virginia Run Elementary School (*fig. J3*).
  - c. Merge the eastern part of 924 SPINDLE (1,353 voters) and the western part of 926 POWELL (1,096 voters) to create 924 SPINDLE #1 (2,449 voters) that will vote at Centreville Regional Library (*fig. J4*).
  - d. Maintain the central part of 924 SPINDLE (949 voters) as 935 SPINDLE #2 to co-locate with 924 SPINDLE #1 that will continue to vote at Centreville Regional Library (*fig. J5*).
  - e. Maintain the eastern part of 926 POWELL (4,887 voters) as a precinct and will continue to vote at Powell Elementary School (*fig. J4*).
4. **925 OLD MILL** was split due to redistricting.
  - a. Absorb the southern part of 925 OLD MILL (53 voters) into 923 BULL RUN (2,754 voters) and maintain as 923 BULL RUN (2,807 voters) that will continue to vote at Bull Run Elementary School (*fig. J6*).
  - b. Maintain the remaining northern section of 925 OLD MILL (2,065 voters) as a precinct that will continue to vote at Centreville United Methodist Church (*fig. J6*).
5. **929 DIFFICULT RUN** was split due to redistricting.
  - a. Absorb the western part of 929 DIFFICULT RUN (247 voters) into 914 VALE (2,629 voters) that will vote at Crossfield Elementary School (*fig. J7*)
  - b. Maintain the eastern part as 929 DIFFICULT RUN (571 voters) that will continue to vote The Church of the Good Shepherd (*fig. J8*).

6. **931 CARSON** was split due to redistricting.
  - a. Absorb the western part of 931 CARSON (1,006 voters) into 927 ARMFIELD (2,260 voters) and maintain as 927 ARMFIELD (3,266 voters) that will vote at Franklin Middle School (*fig. J9*).
  - b. Maintain the eastern part of 931 CARSON (2,188 voters) as a precinct that will continue to vote at Rachel Carson Middle School (*fig. J9*).

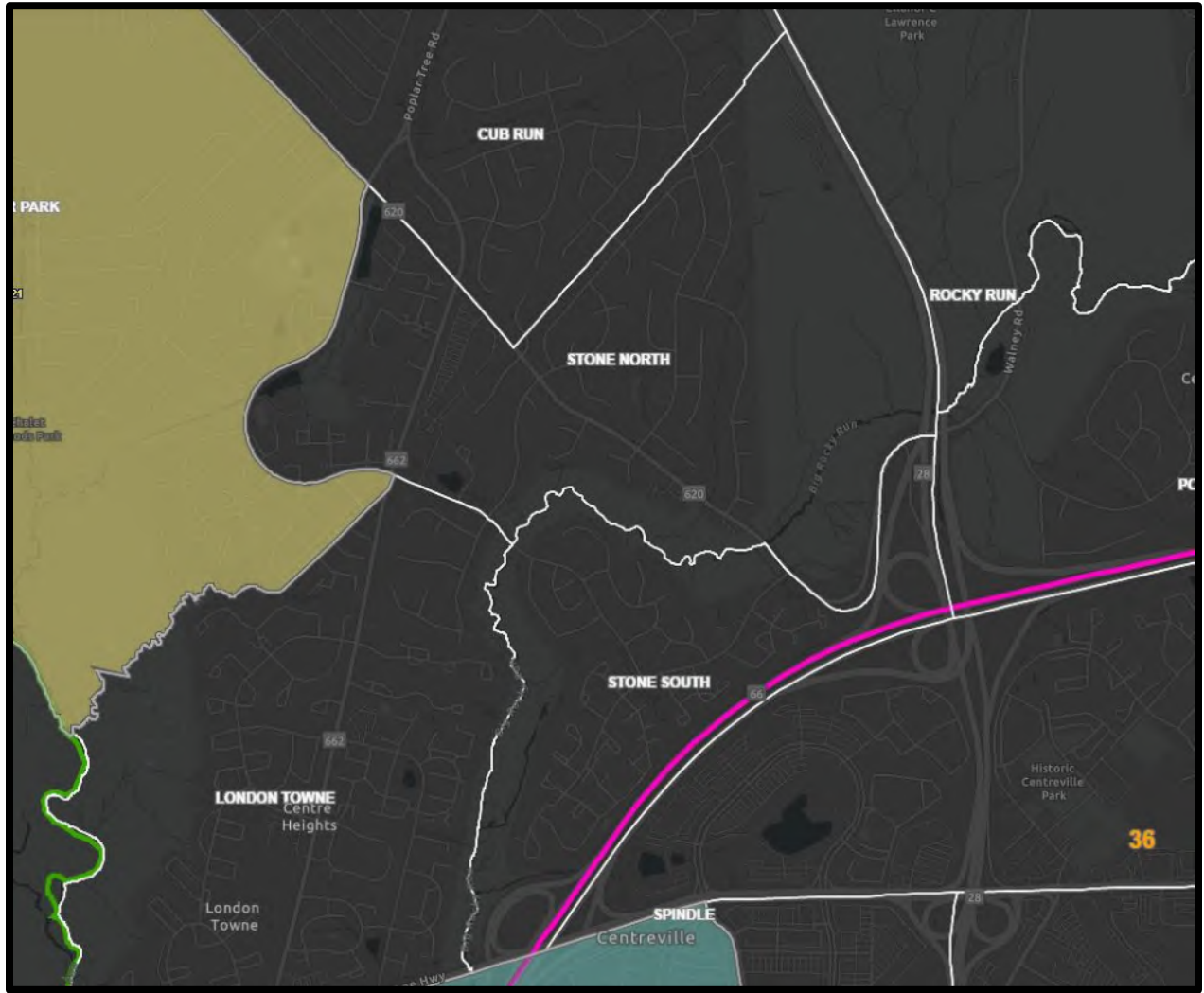


Figure J1

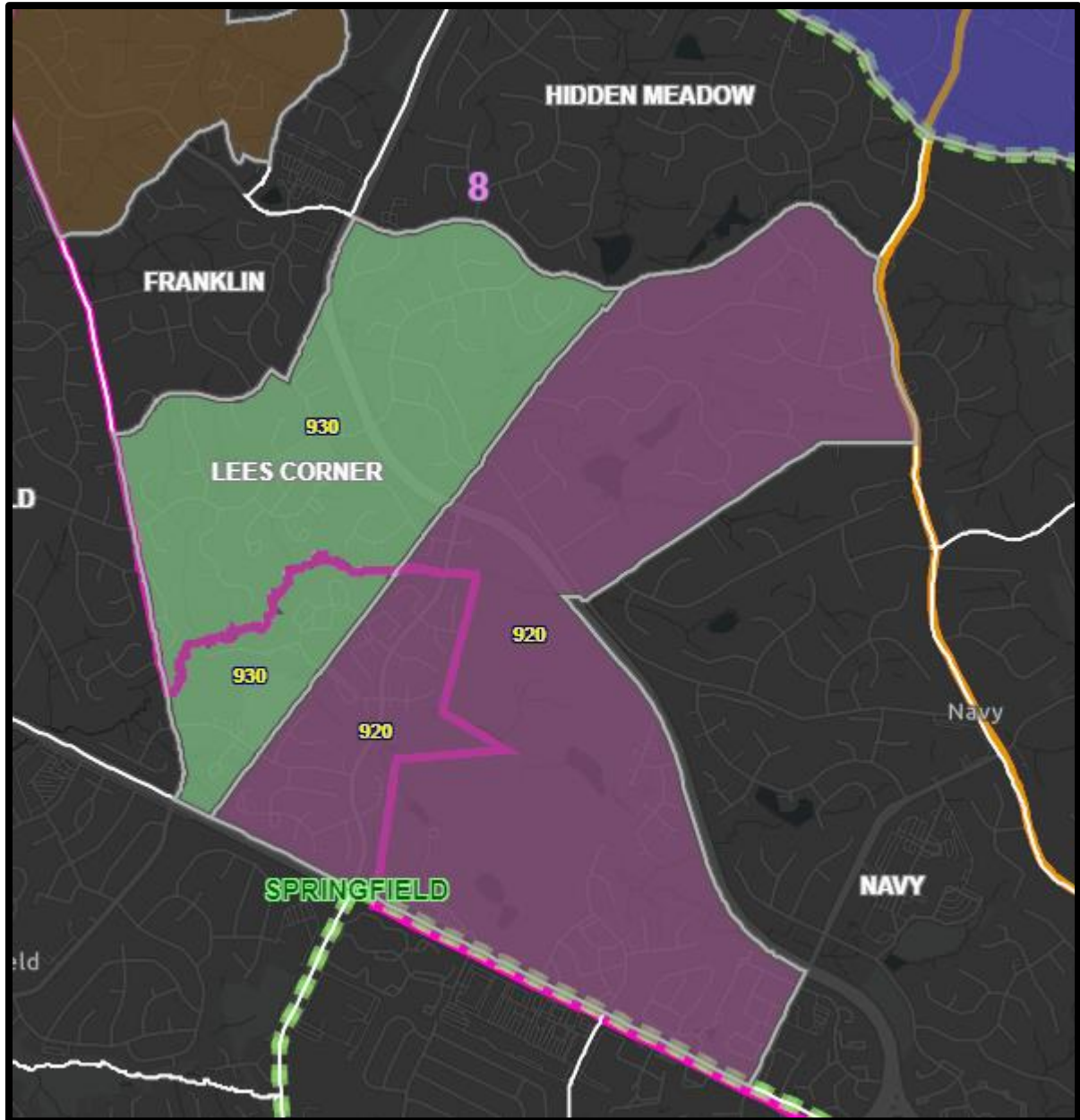


Figure J2



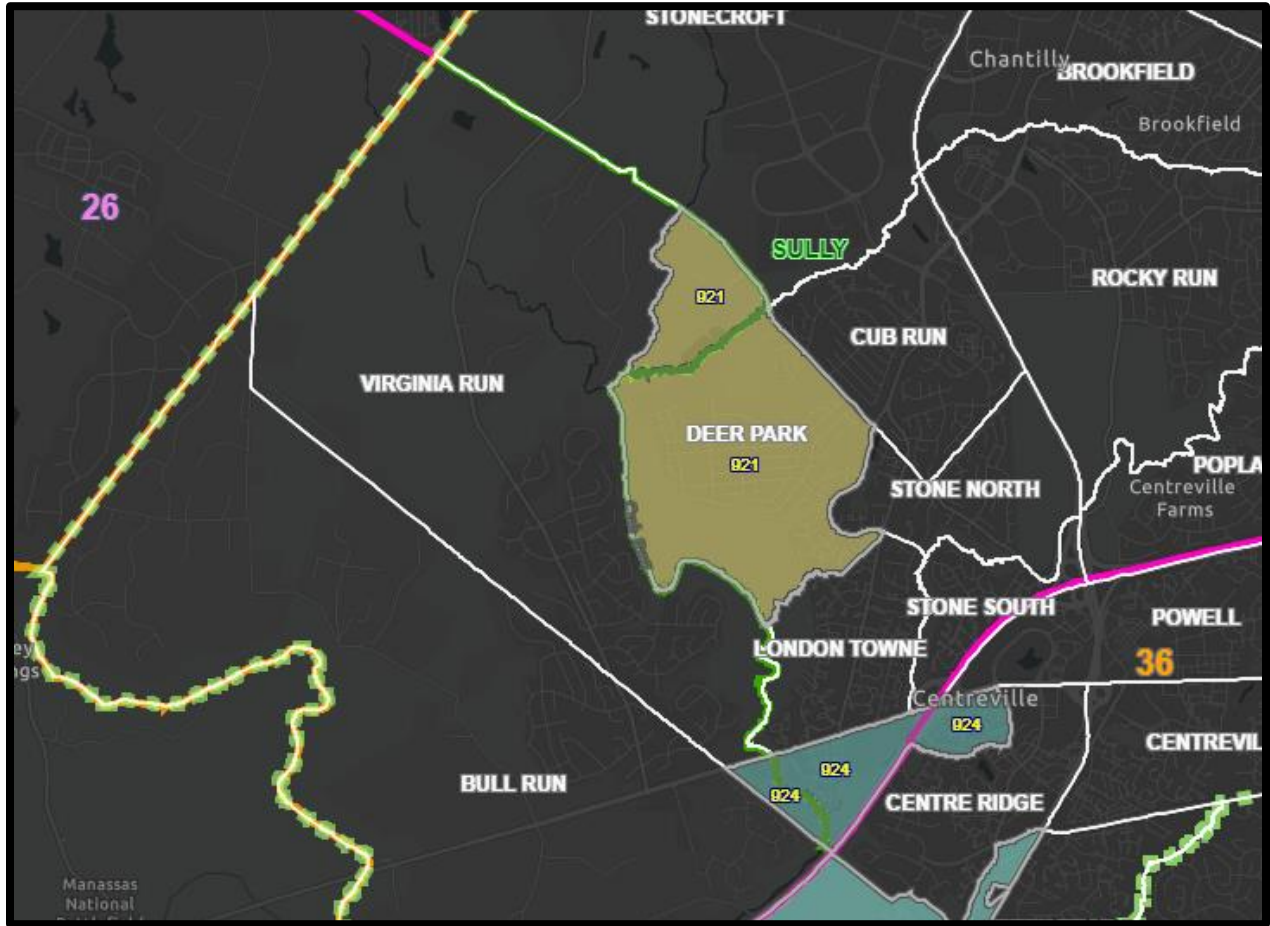


Figure J3

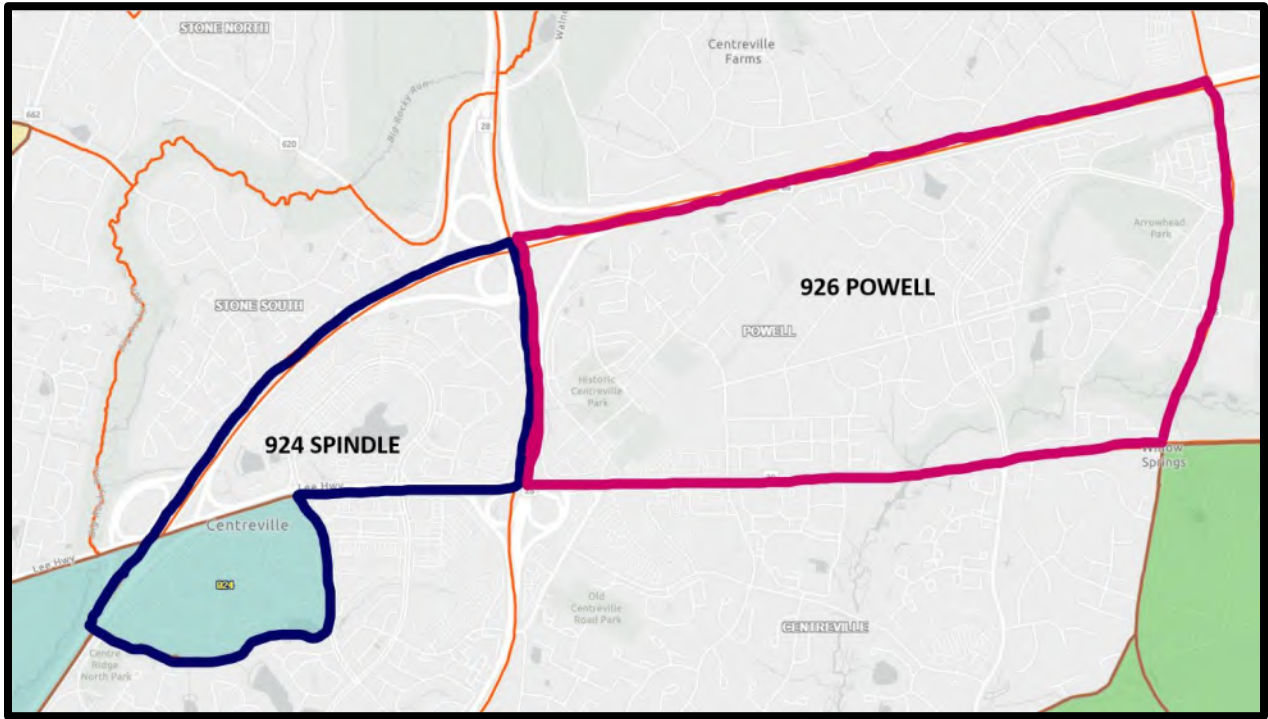


Figure J4

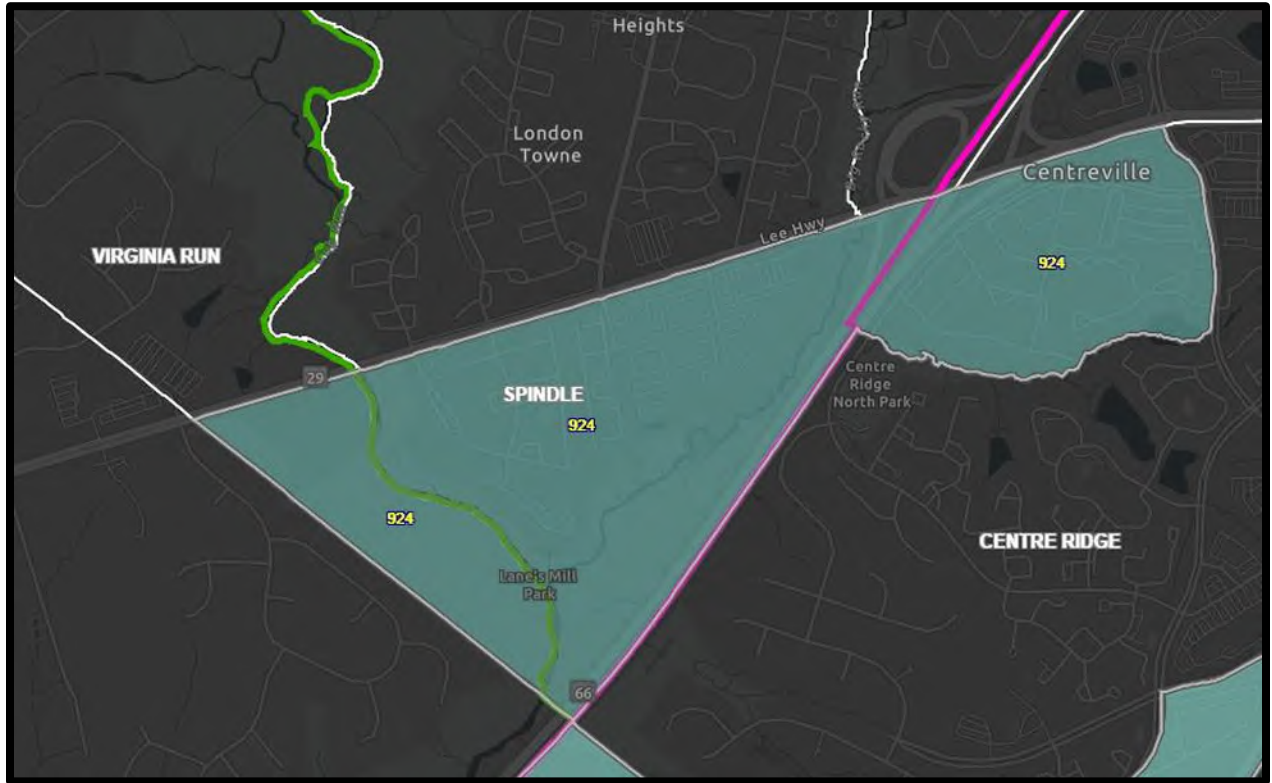


Figure J5

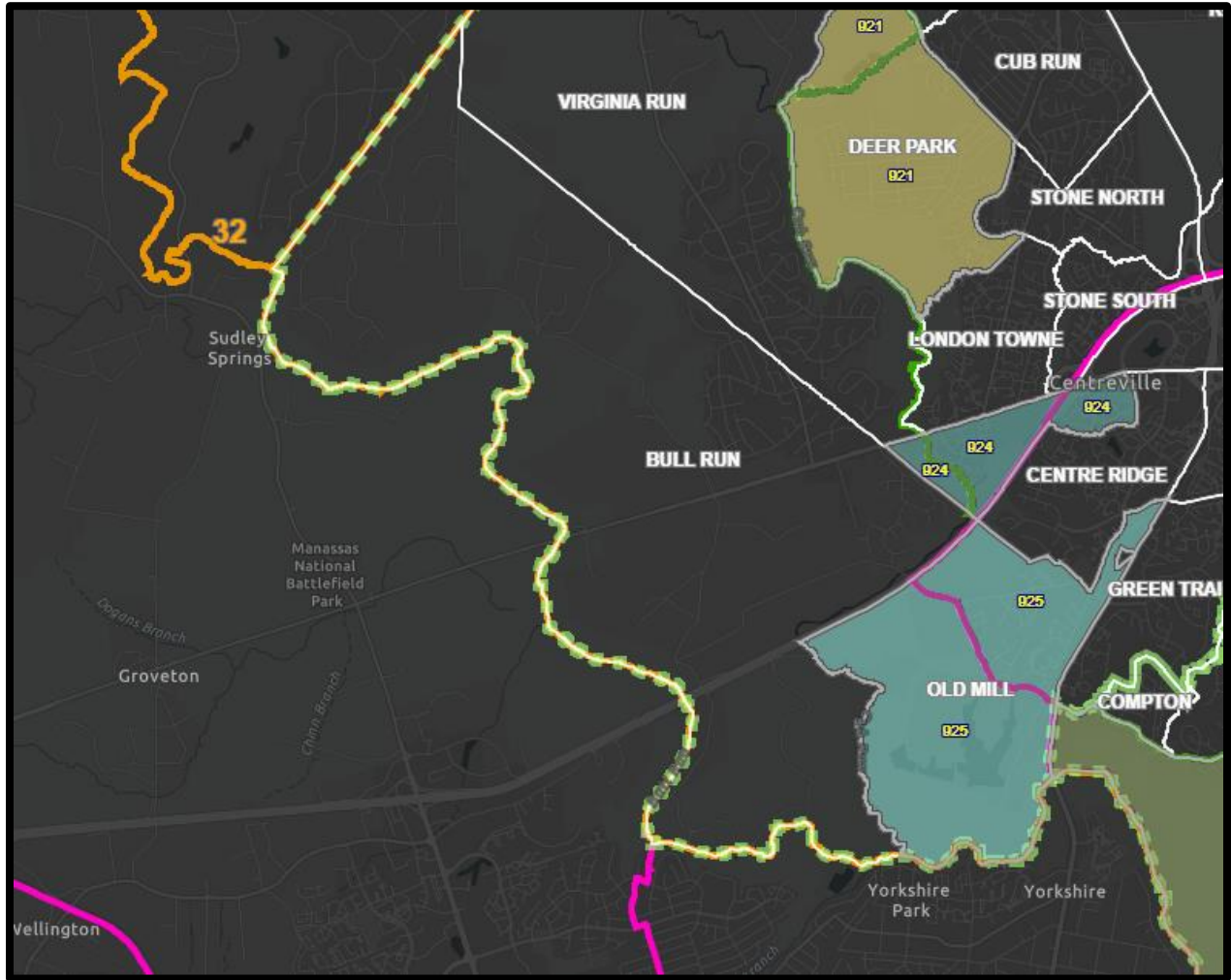


Figure J6



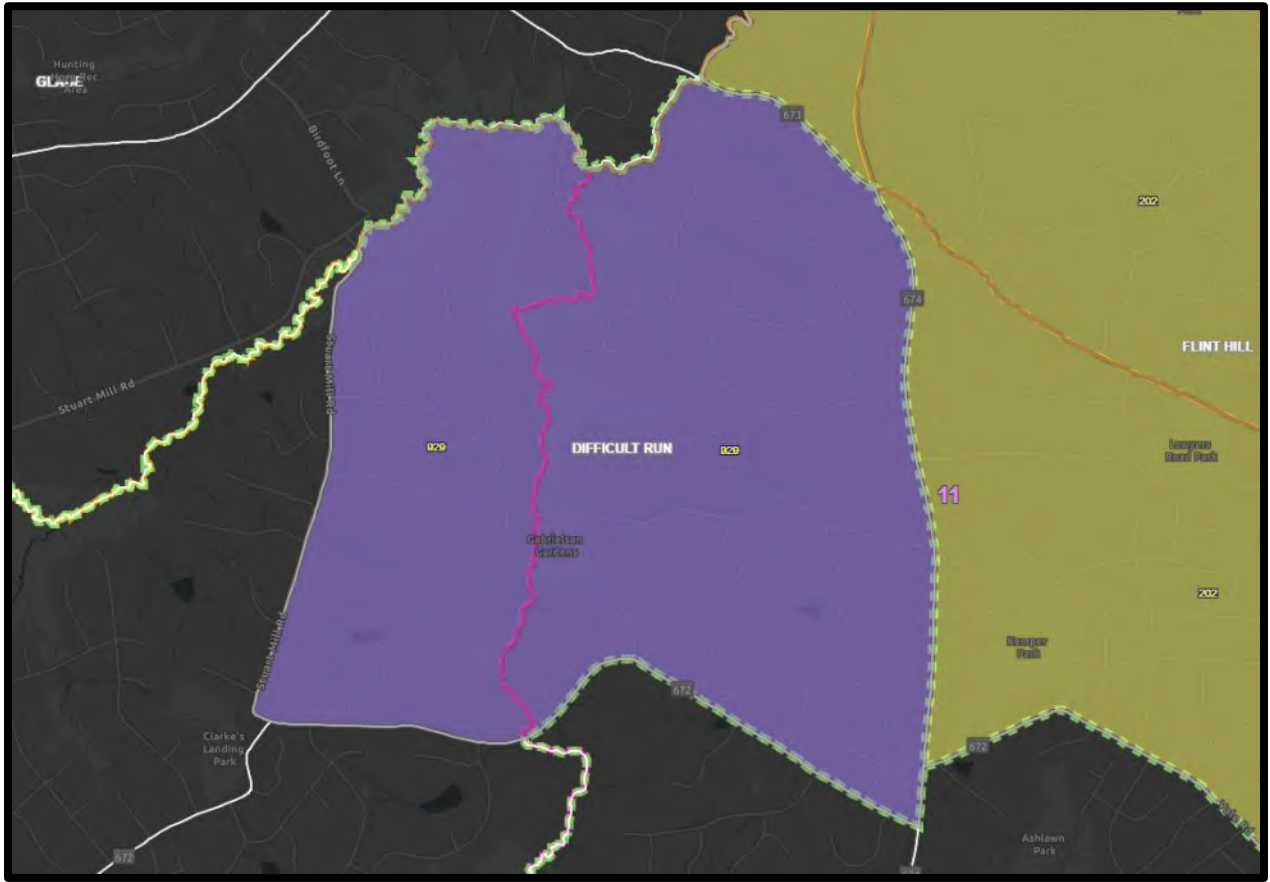


Figure J8

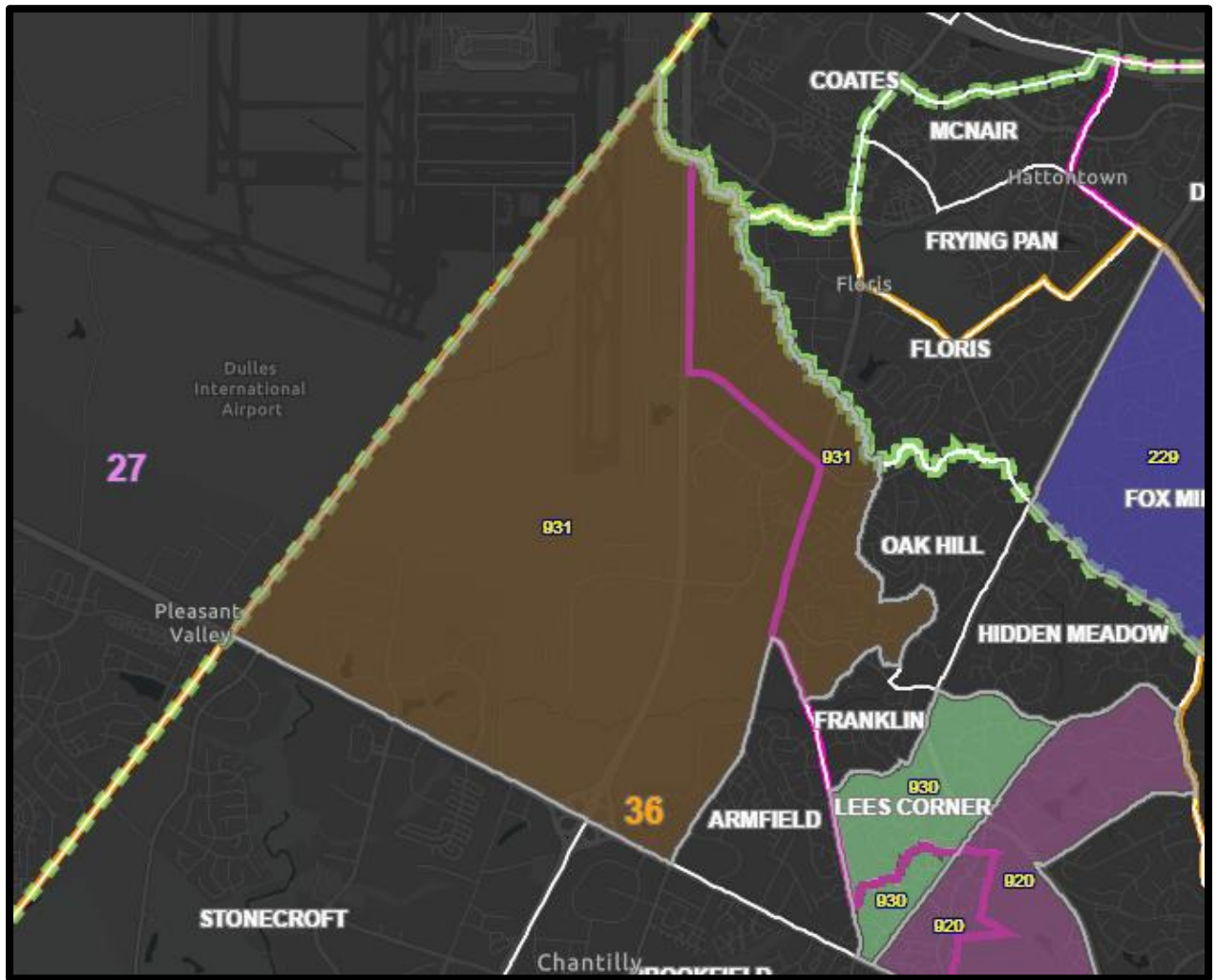


Figure J9

## List of all Fairfax County precincts and polling places, as approved

Precinct	Polling Place	Address
<b>104 CHAPEL</b>	Nancy F. Sprague Technology Center	4414 Holborn Ave; Annandale, VA
<b>105 FAIRVIEW</b>	Fairview Elementary School	5815 Ox Rd; Fairfax Station, VA
<b>106 HERITAGE</b>	Braddock Elementary School	7825 Heritage Dr; Annandale, VA
<b>108 KINGS PARK</b>	Kings Park Elementary School	5400 Harrow Way; Fairfax, VA
<b>109 LITTLE RUN</b>	Little Run Elementary School	4511 Olley Ln; Fairfax, VA
<b>110 NORTH SPRINGFIELD</b>	North Springfield Elementary School	7602 Heming Ct; Springfield, VA
<b>113 CANTERBURY</b>	Canterbury Woods Elementary School	4910 Willet Dr; Annandale, VA
<b>114 OLDE CREEK</b>	Olde Creek Elementary School	9524 Olde Creek Dr; Fairfax, VA
<b>115 RAVENSWORTH</b>	Ravensworth Elementary School	5411 Nutting Dr; Springfield, VA
<b>116 WAKEFIELD</b>	Wakefield Forest Elementary School	4011 Iva Ln; Fairfax, VA
<b>117 WOODSON #1</b>	Woodson High School	9525 Main St; Fairfax, VA
<b>118 LAKE BRADDOCK</b>	Lake Braddock Secondary School	9200 Burke Lake Rd; Burke, VA
<b>119 LAUREL</b>	Laurel Ridge Elementary School	10110 Commonwealth Blvd; Fairfax, VA
<b>120 SIDEBURN #1</b>	Oak View Elementary School	5004 Sideburn Rd; Fairfax, VA
<b>121 VILLA</b>	Fairfax Villa Elementary School	10900 Santa Clara Dr; Fairfax, VA
<b>123 ROBINSON</b>	Robinson Secondary School	5035 Sideburn Rd; Fairfax, VA
<b>125 SIGNAL HILL</b>	Lake Braddock Secondary School	9200 Burke Lake Rd; Burke, VA
<b>126 BONNIE BRAE</b>	Bonnie Brae Elementary School	5420 Sideburn Rd; Fairfax, VA
<b>127 BURKE CENTRE</b>	Commons Community Center	5701 Roberts Pkwy; Burke, VA
<b>128 CARDINAL</b>	Cardinal Forest Elementary School	8600 Forrester Blvd; Springfield, VA
<b>129 KEENE MILL</b>	Keene Mill Elementary School	6310 Bardu Ave; Springfield, VA
<b>130 TERRA CENTRE</b>	Terra Centre Elementary School	6000 Burke Centre Pkwy; Burke, VA
<b>131 EAGLE VIEW #1</b>	Eagle View Elementary School	4500 Dixie Hill Rd; Fairfax, VA
<b>132 MONUMENT</b>	Fairfax County Government Center	12000 Government Center Pkwy; Fairfax, VA
<b>134 UNIVERSITY</b>	GMU - Merten Hall	4441 George Mason Blvd; Fairfax, VA
<b>135 IRVING</b>	Irving Middle School	8100 Old Keene Mill Rd; Springfield, VA
<b>136 WOODSON #2</b>	Woodson High School	9525 Main St; Fairfax, VA
<b>137 SIDEBURN #2</b>	Oak View Elementary School	5004 Sideburn Rd; Fairfax, VA
<b>138 EAGLE VIEW #2</b>	Eagle View Elementary School	4500 Dixie Hill Rd; Fairfax, VA



<b>Precinct</b>	<b>Polling Place</b>	<b>Address</b>
<b>201 ARMSTRONG</b>	Armstrong Elementary School	11900 Lake Newport Rd; Reston, VA
<b>202 FLINT HILL #1</b>	Flint Hill Elementary School	2444 Flint Hill Rd; Vienna, VA
<b>203 FLORIS</b>	Floris Elementary School	2708 Centreville Rd; Centreville, VA
<b>204 MADISON</b>	Madison High School	2500 James Madison Dr; Vienna, VA
<b>208 RESTON #1</b>	Lake Anne Elementary School	11510 North Shore Dr; Reston, VA
<b>209 RESTON #2</b>	Forest Edge Elementary School	1501 Becontree Ln; Reston, VA
<b>213 VIENNA #1</b>	Cunningham Park Elementary School	1001 Park St., SE; Vienna, VA
<b>214 VIENNA #2</b>	Vienna Community Center	120 Cherry St., SE; Vienna, VA
<b>216 VIENNA #4</b>	Cedar Lane School	101 Cedar Lane, Sw; Vienna, VA
<b>218 VIENNA #6</b>	Madison High School	2500 James Madison Dr; Vienna, VA
<b>219 WESTBRIAR #1</b>	Westbriar Elementary School	1741 Pine Valley Dr; Vienna, VA
<b>220 DOGWOOD</b>	Dogwood Elementary School	12300 Glade Dr; Reston, VA
<b>221 HUNTERS WOODS</b>	Hunters Woods Elementary School	2401 Colts Neck Rd; Reston, VA
<b>222 RESTON #3</b>	Reston Community Center-Lake Anne	1609-A Washington Plaza; Reston, VA
<b>223 GLADE</b>	Reston Community Center	2310 Colts Neck Rd; Reston, VA
<b>224 SOUTH LAKES</b>	South Lakes High School	11400 South Lakes Dr; Reston, VA
<b>225 HUGHES</b>	Hughes Middle School	11401 Ridge Heights Rd; Reston, VA
<b>226 WOLFTRAP</b>	Wolftrap Elementary School	1903 Beulah Rd; Vienna, VA
<b>227 SUNRISE VALLEY #1</b>	Sunrise Valley Elementary School	10824 Cross School Rd; Reston, VA
<b>229 FOX MILL #1</b>	Fox Mill Elementary School	2611 Viking Dr; Herndon, VA
<b>233 NORTH POINT #1</b>	St. Thomas à Becket Catholic Church	1421 Wiehle Ave; Reston, VA
<b>234 ALDRIN</b>	Aldrin Elementary School	11375 Center Harbor Rd; Reston, VA
<b>235 FRYING PAN</b>	Visitor Center at Frying Pan Farm Park	2739 West Ox Rd; Herndon, VA
<b>236 STUART</b>	Armstrong Elementary School	11900 Lake Newport Rd; Reston, VA
<b>237 MCNAIR</b>	McNair Elementary School	2499 Thomas Jefferson Dr; Herndon, VA
<b>238 CAMERON GLEN</b>	North County Human Services Building	1850 Cameron Glen Dr; Reston, VA
<b>240 COLVIN</b>	The Capital Church	10233 Leesburg Pike; Vienna, VA
<b>241 FLINT HILL #2</b>	Flint Hill Elementary School	2444 Flint Hill Rd; Vienna, VA
<b>242 WESTBRIAR #2</b>	Westbriar Elementary School	1741 Pine Valley Dr; Vienna, VA
<b>243 SUNRISE VALLEY #2</b>	Sunrise Valley Elementary School	10824 Cross School Rd; Reston, VA
<b>244 FOX MILL #2</b>	Fox Mill Elementary School	2611 Viking Dr; Herndon, VA
<b>245 NORTH POINT #2</b>	St. Thomas à Becket Catholic Church	1421 Wiehle Ave; Reston, VA

<b>Precinct</b>	<b>Polling Place</b>	<b>Address</b>
<b>301 CHAIN BRIDGE</b>	Langley High School	6520 Georgetown Pike; McLean, VA
<b>302 CHESTERBROOK</b>	Chesterbrook Elementary School	1753 Kirby Rd; McLean, VA
<b>303 CHURCHILL</b>	Churchill Road Elementary School	7100 Churchill Rd; McLean, VA
<b>304 COOPER</b>	Cooper Middle School	977 Balls Hill Rd; McLean, VA
<b>305 EL NIDO</b>	Chesterbrook Elementary School	1753 Kirby Rd; McLean, VA
<b>306 GREAT FALLS</b>	Great Falls Elementary School	701 Walker Rd; Great Falls, VA
<b>307 HAYCOCK</b>	Haycock Elementary School	6616 Haycock Rd; Falls Church, VA
<b>309 KENMORE</b>	Spring Hill Recreation Center	1239 Spring Hill Rd; McLean, VA
<b>310 KIRBY</b>	McLean High School	1633 Davidson Rd; McLean, VA
<b>311 LANGLEY</b>	Langley High School	6520 Georgetown Pike; McLean, VA
<b>312 LONGFELLOW</b>	Longfellow Middle School	2000 Westmoreland St; Falls Church, VA
<b>314 MCLEAN</b>	Lewinsville Senior Center	1613 Great Falls St; McLean, VA
<b>315 PIMMIT</b>	Pimmit Hills Center	7510 Lisle Ave; Falls Church, VA
<b>316 SALONA</b>	Franklin Sherman Elementary School	6633 Brawner St; McLean, VA
<b>317 WESTHAMPTON</b>	Lemon Road Elementary School	7230 Idylwood Rd; Falls Church, VA
<b>318 WESTMORELAND</b>	Kent Gardens Elementary School	1717 Melbourne Dr; McLean, VA
<b>319 HERNDON #1</b>	Herndon Elementary School	630 Dranesville Rd; Herndon, VA
<b>320 HERNDON #2</b>	Herndon Community Center	814 Ferndale Ave; Herndon, VA
<b>321 CLEARVIEW</b>	Clearview Elementary School	12635 Builders Rd; Herndon, VA
<b>322 FORESTVILLE</b>	Great Falls United Methodist Church	10100 Georgetown Pike; Great Falls, VA
<b>323 SHOUSE</b>	Colvin Run Elementary School	1400 Trap Rd; Vienna, VA
<b>324 HERNDON #3</b>	Herndon Middle School	901 Locust St; Herndon, VA
<b>325 HUTCHISON</b>	Hutchison Elementary School	13209 Parcher Ave; Herndon, VA
<b>327 SUGARLAND</b>	Herndon High School	700 Bennett St; Herndon, VA
<b>328 HICKORY</b>	Great Falls Library	9830 Georgetown Pike; Great Falls, VA
<b>329 SENECA</b>	Forestville Elementary School	1085 Utterback Store Rd; Great Falls, VA
<b>331 SPRING HILL</b>	Spring Hill Elementary School	8201 Lewinsville Rd; McLean, VA
<b>332 COATES</b>	Coates Elementary School	2480 River Birch Rd; Herndon, VA

<b>Precinct</b>	<b>Polling Place</b>	<b>Address</b>
<b>401 BUSH HILL</b>	Bush Hill Elementary School	5927 Westchester St; Alexandria, VA
<b>402 CAMERON</b>	Cameron Elementary School	3434 Campbell Dr; Alexandria, VA
<b>403 FORESTDALE</b>	Forestdale Elementary School	6530 Elder Ave; Springfield, VA
<b>404 FRANCONIA #1</b>	Edison High School	5801 Franconia Rd; Alexandria, VA
<b>405 GROVETON</b>	Groveton Elementary School	6900 Harrison Ln; Alexandria, VA
<b>406 HAYFIELD</b>	Hayfield Elementary School	7633 Telegraph Rd; Alexandria, VA
<b>408 MOUNT EAGLE</b>	Mount Eagle Elementary School	6116 North Kings Hwy; Alexandria, VA
<b>409 PIONEER</b>	Lewis High School	6540 Franconia Rd; Springfield, VA
<b>410 ROSE HILL</b>	Rose Hill Elementary School	6301 Rose Hill Dr; Alexandria, VA
<b>411 VIRGINIA HILLS</b>	Virginia Hills Center	6520 Diana Ln; Alexandria, VA
<b>413 FAIRFIELD</b>	Mt. Vernon Woods Elementary School	4015 Fielding St; Alexandria, VA
<b>415 CRESTWOOD</b>	Crestwood Elementary School	6010 Hanover Ave; Springfield, VA
<b>417 GARFIELD</b>	Garfield Elementary School	7101 Old Keene Mill Rd; Springfield, VA
<b>418 LYNBROOK #1</b>	Lynbrook Elementary School	5801 Backlick Rd; Springfield, VA
<b>419 LANE</b>	Lane Elementary School	7137 Beulah St; Alexandria, VA
<b>420 VILLAGES</b>	Hayfield Secondary School	7630 Telegraph Rd; Alexandria, VA
<b>421 KINGSTOWNE</b>	Hayfield Secondary School	7630 Telegraph Rd; Alexandria, VA
<b>422 VAN DORN</b>	Key Middle School	6402 Franconia Rd; Springfield, VA
<b>423 CLERMONT</b>	Clermont Elementary School	5720 Clermont Dr; Alexandria, VA
<b>424 HUNTLEY</b>	St. Mark's Episcopal Church	6744 South Kings Hwy; Alexandria, VA
<b>426 GREENSPRING</b>	Greenspring Conference Center	7430 Spring Village Dr; Springfield, VA
<b>427 ISLAND CREEK</b>	Island Creek Elementary School	7855 Morning View Ln; Alexandria, VA
<b>428 PINWOOD</b>	Mt. Vernon Woods Elementary School	4015 Fielding St; Alexandria, VA
<b>429 HYBLA VALLEY</b>	Hybla Valley Elementary School	3415 Lockheed Blvd; Alexandria, VA
<b>431 WEST SPRINGFIELD</b>	West Springfield Elementary School	6802 Deland Dr; Springfield, VA
<b>432 FRANCONIA #2</b>	Edison High School	5801 Franconia Rd; Alexandria, VA
<b>433 LYNBROOK #2</b>	Lynbrook Elementary School	5801 Backlick Rd; Springfield, VA

<b>Precinct</b>	<b>Polling Place</b>	<b>Address</b>
<b>501 BAILEYS</b>	Bailey's Community Center	5920 Summers Ln; Falls Church, VA
<b>502 BARCROFT</b>	Sleepy Hollow Elementary School	3333 Sleepy Hollow Rd; Falls Church, VA
<b>503 BELVEDERE</b>	Belvedere Elementary School	6540 Columbia Pike; Falls Church, VA
<b>504 BRISTOW</b>	Annandale Terrace Elementary School	7604 Herald St; Annandale, VA
<b>505 GLEN FOREST</b>	Glen Forest Elementary School	5829 Glen Forest Dr; Falls Church, VA
<b>506 HOLMES</b>	Woodrow Wilson Library	6101 Knollwood Dr; Falls Church, VA
<b>507 LINCOLNIA</b>	Green Spring Gardens Park	4603 Green Spring Rd; Alexandria, VA
<b>508 MASONVILLE</b>	Mason Crest Elementary School	3705 Crest Dr; Annandale, VA
<b>509 PLAZA</b>	Skyline Plaza Residential Towers	3703 South George Mason Dr; Falls Church, VA
<b>510 PARKLAWN</b>	Parklawn Elementary School	4116 Braddock Rd; Alexandria, VA
<b>511 RAVENWOOD</b>	Justice High School	3301 Peace Valley Ln; Falls Church, VA
<b>512 SLEEPY HOLLOW</b>	Beech Tree Elementary School	3401 Beech Tree Ln; Falls Church, VA
<b>513 SAINT ALBANS</b>	Parish Hall, Saint Albans Church	6800 Columbia Pike; Annandale, VA
<b>514 CROSSROADS</b>	Goodwin House Bailey's Crossroads	3440 South Jefferson St; Falls Church, VA
<b>515 WESTLAWN</b>	Westlawn Elementary School	3200 Westley Rd; Falls Church, VA
<b>516 WEYANOKE</b>	Holmes Middle School	6525 Montrose St; Alexandria, VA
<b>517 WILLSTON</b>	Willston Instructional Center	6131 Willston Dr; Falls Church, VA
<b>518 COLUMBIA</b>	Annandale Fire Station, Co. #8	7128 Columbia Pike; Annandale, VA
<b>519 HUMMER</b>	Fred Packard Center	4022 Hummer Rd; Annandale, VA
<b>520 SKYLINE</b>	Bailey's Community Center	5920 Summers Ln; Falls Church, VA
<b>521 BROOK HILL</b>	Poe Middle School	7000 Cindy Ln; Annandale, VA
<b>522 CAMELOT</b>	Camelot Elementary School	8100 Guinevere Dr; Annandale, VA
<b>523 POE</b>	Thomas Jefferson High School	6560 Braddock Rd; Alexandria, VA
<b>525 WALNUT HILL</b>	Alan Leis Center at Walnut Hill	7423 Camp Alger Ave; Falls Church, VA
<b>526 BREN MAR</b>	Bren Mar Park Elementary School	6344 Beryl Rd; Alexandria, VA
<b>527 EDSALL</b>	St. John's United Methodist Church	5312 Backlick Rd; Springfield, VA
<b>528 RIDGELEA</b>	Bethlehem Lutheran Church	8922 Little River Tpk; Fairfax, VA
<b>530 TRIPPS</b>	Bailey's Elementary School	6111 Knollwood Dr; Falls Church, VA
<b>535 FORT BUFFALO</b>	James Lee Community Center	2855-A Annandale Rd; Falls Church, VA
<b>536 WOODBURN</b>	Woodburn Elementary School	3401 Hemlock Dr; Falls Church, VA

<b>Precinct</b>	<b>Polling Place</b>	<b>Address</b>
<b>601 BELLE HAVEN</b>	West Potomac High School	6500 Quander Rd; Alexandria, VA
<b>602 BELLEVIEW</b>	Belle View Elementary School	6701 Fort Hunt Rd; Alexandria, VA
<b>604 BUCKNELL</b>	Bryant Center	2709 Popkins Ln; Alexandria, VA
<b>605 FORT HUNT</b>	Fort Hunt Elementary School	8832 Linton Ln; Alexandria, VA
<b>606 HOLLIN HALL</b>	Hollin Hall Center	1500 Shenandoah Rd; Alexandria, VA
<b>607 HUNTINGTON</b>	Fairhaven Community Center	2409 Fort Dr; Alexandria, VA
<b>608 KIRKSIDE</b>	Hollin Meadows Elementary School	2310 Nordok Pl; Alexandria, VA
<b>609 MARLAN</b>	Paul Spring Retirement Community	7116 Fort Hunt Rd; Alexandria, VA
<b>610 SHERWOOD</b>	Whitman Middle School	2500 Parkers Ln; Alexandria, VA
<b>611 STRATFORD</b>	Stratford Landing Elementary School	8484 Riverside Rd; Alexandria, VA
<b>612 WAYNEWOOD</b>	Waynewood Elementary School	1205 Waynewood Blvd; Alexandria, VA
<b>613 WESTGATE</b>	Washington Mill Elementary School	9100 Cherry Tree Dr; Alexandria, VA
<b>614 RIVERSIDE</b>	Riverside Elementary School	8410 Old Mount Vernon Rd; Alexandria, VA
<b>615 WOODLEY</b>	Woodley Hills Elementary School	8718 Old Mt. Vernon Rd; Alexandria, VA
<b>616 GUNSTON</b>	Gunston Elementary School	10100 Gunston Rd; Lorton, VA
<b>617 LORTON</b>	Lorton Station Elementary School	9298 Lewis Chapel Rd; Lorton, VA
<b>618 NEWINGTON #1</b>	Newington Forest Elementary School	8001 Newington Forest Ave; Springfield, VA
<b>621 GROSVENOR</b>	Huntington Community Center	5751 Liberty Dr; Alexandria, VA
<b>622 LORTON STATION</b>	Lorton Station Elementary School	9298 Lewis Chapel Rd; Lorton, VA
<b>623 ALBAN</b>	Saratoga Elementary School	8111 Northumberland Rd; Springfield, VA
<b>627 WOODLAWN #1</b>	Knights of Columbus #5998	8592 Richmond Hwy; Alexandria, VA
<b>628 LAUREL HILL #1</b>	Laurel Hill Elementary School	8390 Laurel Crest Dr; Lorton, VA
<b>629 SOUTH COUNTY</b>	South County High School	8501 Silverbrook Rd; Lorton, VA
<b>630 ARMY</b>	Newington DVS Facility	8201 Cinder Bed Rd; Lorton, VA
<b>631 POHICK CREEK</b>	Lorton Station Elementary School	9298 Lewis Chapel Rd; Lorton, VA
<b>632 HALLEY #1</b>	Halley Elementary School	8850 Cross Chase Cir; Fairfax Station, VA
<b>633 HALLEY #2</b>	Halley Elementary School	8850 Cross Chase Cir; Fairfax Station, VA
<b>634 NEWINGTON #2</b>	Newington Forest Elementary School	8001 Newington Forest Ave; Springfield, VA
<b>635 WOODLAWN #2</b>	Knights of Columbus #5998	8592 Richmond Hwy; Alexandria, VA
<b>636 LAUREL HILL #2</b>	Laurel Hill Elementary School	8390 Laurel Crest Dr; Lorton, VA

<b>Precinct</b>	<b>Polling Place</b>	<b>Address</b>
<b>700 FAIRFAX COURT</b>	(no registered voters)	n/a
<b>701 BLAKE</b>	Oakton High School	2900 Sutton Rd; Vienna, VA
<b>704 FREEDOM HILL</b>	Freedom Hill Elementary School	1945 Lord Fairfax Rd; Vienna, VA
<b>705 GRAHAM-GREENWAY</b>	Graham Road Elementary School	2831 Graham Rd; Falls Church, VA
<b>707 MANTUA</b>	Fairfax Circle Baptist Church	3110 Chichester Ln; Fairfax, VA
<b>708 MARSHALL</b>	Marshall High School	7731 Leesburg Pike; Falls Church, VA
<b>709 MOSBY #1</b>	Mosaic Elementary School	9819 Five Oaks Rd; Fairfax, VA
<b>710 PINE SPRING</b>	Pine Spring Elementary School	7607 Willow Ln; Falls Church, VA
<b>711 PRICE</b>	Mantua Elementary School	9107 Horner Ct; Fairfax, VA
<b>712 SHREVE</b>	Shrevewood Elementary School	7525 Shreve Rd; Falls Church, VA
<b>713 TIMBER LANE</b>	Timber Lane Elementary School	2737 West St; Falls Church, VA
<b>714 WALKER</b>	Fairhill Elementary School	3001 Chichester Ln; Fairfax, VA
<b>718 PINE RIDGE</b>	Elks Lodge	8421 Arlington Blvd; Fairfax, VA
<b>720 THOREAU</b>	Thoreau Middle School	2505 Cedar Ln; Vienna, VA
<b>721 MERRIFIELD</b>	Luther Jackson Middle School	3020 Gallows Rd; Falls Church, VA
<b>723 GALLOWES EAST</b>	Gatehouse Administration Center	8115 Gatehouse Rd; Falls Church, VA
<b>726 MAGARITY</b>	Westgate Elementary School	7500 Magarity Rd; Falls Church, VA
<b>727 OAKTON</b>	Unitarian Universalist Congregation of Fairfax	2709 Hunter Mill Rd; Oakton, VA
<b>729 NOTTOWAY</b>	Marshall Road Elementary School	730 Marshall Rd Sw; Vienna, VA
<b>731 TYSONS</b>	Providence Committee Meeting Room	7921 Jones Branch Rd; McLean, VA
<b>732 OAK MARR</b>	Oakton Library	10304 Lynnhaven Pl; Oakton, VA
<b>733 KILMER</b>	Kilmer Middle School	8100 Wolftrap Rd; Vienna, VA
<b>734 HUNTERS BRANCH</b>	Providence Community Center	3001 Vaden Dr; Fairfax, VA
<b>735 ROTONDA</b>	Rotonda Condominiums Community Center	8352 Greensboro Dr; McLean, VA
<b>736 BEDFORD</b>	Luther Jackson Middle School	3020 Gallows Rd; Falls Church, VA
<b>737 MOSBY #2</b>	Mosaic Elementary School	9819 Five Oaks Rd; Fairfax, VA

<b>Precinct</b>	<b>Polling Place</b>	<b>Address</b>
<b>801 BURKE #1</b>	West Springfield High School	6100 Rolling Rd; Springfield, VA
<b>802 CEDAR LAKE</b>	Michael R. Frey Animal Shelter	4500 West Ox Rd; Fairfax, VA
<b>803 CLIFTON SOUTH</b>	Clifton Presbyterian Church	12748 Richards Ln; Clifton, VA
<b>804 COLCHESTER</b>	Mott Community Center	12111 Braddock Rd; Fairfax, VA
<b>805 FAIRFAX STATION</b>	St. Peter's in the Woods	5911 Fairview Woods Dr; Fairfax Station, VA
<b>806 SYDENSTRICKER</b>	Sydenstricker United Methodist Church	8508 Hooes Road; Springfield, VA
<b>807 HUNT VALLEY</b>	Hunt Valley Elementary School	7107 Sydenstricker Rd; Springfield, VA
<b>811 POHICK</b>	St. Andrew's Episcopal Church	6509 Sydenstricker Rd; Burke, VA
<b>812 VALLEY</b>	Rolling Valley Elementary School	6703 Barnack Dr; Springfield, VA
<b>815 WOODYARD</b>	Antioch Baptist Church	6531 Little Ox Rd; Fairfax Station, VA
<b>824 ORANGE</b>	Orange Hunt Elementary School	6820 Sydenstricker Rd; Springfield, VA
<b>825 CHERRY RUN</b>	Cherry Run Elementary School	9732 Ironmaster Dr; Burke, VA
<b>833 WHITE OAKS</b>	White Oaks Elementary School	6130 Shiplett Blvd; Burke, VA
<b>838 SANGSTER</b>	Sangster Elementary School	7420 Reservation Dr; Springfield, VA
<b>839 SILVERBROOK</b>	Silverbrook Elementary School	9350 Crosspointe Dr; Fairfax Station, VA
<b>841 POPES HEAD</b>	Living Savior Lutheran Church	5500 Ox Rd; Fairfax Station, VA
<b>842 PARKWAY</b>	Burke Community Church	9900 Old Keene Mill Rd; Burke, VA
<b>843 FAIR LAKES</b>	St. Paul Chung Catholic Church	4712 Rippling Pond Dr; Fairfax, VA
<b>844 CENTERPOINTE</b>	Herrity Building	12055 Government Center Pkwy; Fairfax, VA
<b>845 FOUNTAINHEAD</b>	Christ Church	7600 Ox Rd; Fairfax Station, VA
<b>846 GREENBRIAR EAST</b>	Greenbriar East Elementary School	13006 Point Pleasant Dr; Fairfax, VA
<b>847 GREENBRIAR WEST</b>	Greenbriar West Elementary School	13300 Poplar Tree Rd; Fairfax, VA
<b>848 FAIR OAKS</b>	VA Dept of Transportation (VDOT)	4975 Alliance Dr; Fairfax, VA
<b>849 NEWGATE NORTH</b>	Centreville High School	6001 Union Mill Rd; Clifton, VA
<b>850 SOUTH RUN</b>	South Run Recreation Center	7550 Reservation Dr; Springfield, VA
<b>851 WILLOW SPRINGS #1</b>	Willow Springs Elementary School	5400 Willow Springs School Rd; Fairfax, VA
<b>854 NEWGATE SOUTH</b>	Centreville High School	6001 Union Mill Rd; Clifton, VA
<b>855 SARATOGA</b>	Saratoga Elementary School	8111 Northumberland Rd; Springfield, VA
<b>856 PENDERBROOK</b>	Penderbrook Community Center	3704 Golf Trail Ln; Fairfax, VA
<b>857 ISLAND POND</b>	Oak Marr Recreation Center	3200 Jermantown Rd; Oakton, VA
<b>858 CLIFTON TOWN</b>	Clifton Presbyterian Church	12748 Richards Ln; Clifton, VA
<b>859 LIBERTY</b>	Liberty Middle School	6801 Union Mill Rd; Clifton, VA
<b>860 SANDY RUN</b>	Christ Church	To be determined
<b>861 BURKE #2</b>	West Springfield High School	6100 Rolling Rd; Springfield, VA
<b>862 WILLOW SPRINGS #2</b>	Willow Springs Elementary School	5400 Willow Springs School Rd; Fairfax, VA

<b>Precinct</b>	<b>Polling Place</b>	<b>Address</b>
<b>901 CENTRE RIDGE</b>	Centre Ridge Elementary School	14400 New Braddock Rd; Centreville, VA
<b>902 BROOKFIELD</b>	Brookfield Elementary School	4200 Lees Corner Rd; Chantilly, VA
<b>903 CUB RUN</b>	Cub Run Elementary School	5301 Sully Station Dr; Centreville, VA
<b>904 STONECROFT</b>	Cub Run Recreation Center	4630 Stonecroft Blvd; Chantilly, VA
<b>905 FRANKLIN</b>	Franklin Middle School	3300 Lees Corner Rd; Chantilly, VA
<b>908 HIDDEN MEADOW</b>	Epiphany Episcopal Church	3301 Hidden Meadow Dr; Herndon, VA
<b>909 OAK HILL</b>	Oak Hill Elementary School	3210 Kinross Ci; Herndon, VA
<b>910 LONDON TOWNE</b>	London Towne Elementary School	6100 Stone Rd; Centreville, VA
<b>911 NAVY</b>	Navy Elementary School	3500 West Ox Rd; Fairfax, VA
<b>913 ROCKY RUN</b>	Rocky Run Middle School	4400 Stringfellow Rd; Chantilly, VA
<b>914 VALE</b>	Crossfield Elementary School	2791 Fox Mill Rd; Herndon, VA
<b>915 VIRGINIA RUN</b>	Virginia Run Elementary School	15450 Martins Hundred Dr; Centreville, VA
<b>916 WAPLES MILL</b>	Waples Mill Elementary School	11509 Waples Mill Rd; Oakton, VA
<b>917 STONE</b>	Stone Middle School	5500 Sully Park Dr; Centreville, VA
<b>918 CENTREVILLE</b>	Mountain View High School	5775 Spindle Ct; Centreville, VA
<b>919 GREEN TRAILS</b>	Centreville Elementary School	14330 Green Trails Blvd; Centreville, VA
<b>920 CHANTILLY</b>	Chantilly High School	4201 Stringfellow Rd; Fairfax, VA
<b>921 DEER PARK</b>	Deer Park Elementary School	15109 Carlbern Dr; Centreville, VA
<b>923 BULL RUN</b>	Bull Run Elementary School	15301 Lee Hwy; Centreville, VA
<b>924 SPINDLE #1</b>	Centreville Regional Library	14200 St. Germain Dr; Centreville, VA
<b>925 OLD MILL</b>	Centreville United Methodist Church	6400 Old Centreville Rd; Centreville, VA
<b>926 POWELL</b>	Powell Elementary School	13340 Leland Rd; Centreville, VA
<b>927 ARMFIELD</b>	Franklin Middle School	3300 Lees Corner Rd; Chantilly, VA
<b>928 POPLAR TREE</b>	Poplar Tree Elementary School	13440 Melville Ln; Chantilly, VA
<b>929 DIFFICULT RUN</b>	The Church of the Good Shepherd	2351 Hunter Mill Rd; Vienna, VA
<b>931 CARSON</b>	Rachel Carson Middle School	13618 McLearen Rd; Herndon, VA
<b>934 FOX VALLEY</b>	Lees Corner Elementary School	13500 Hollinger Ave; Fairfax, VA
<b>935 SPINDLE #2</b>	Centreville Regional Library	14200 St. Germain Dr; Centreville, VA