



Lunch Time

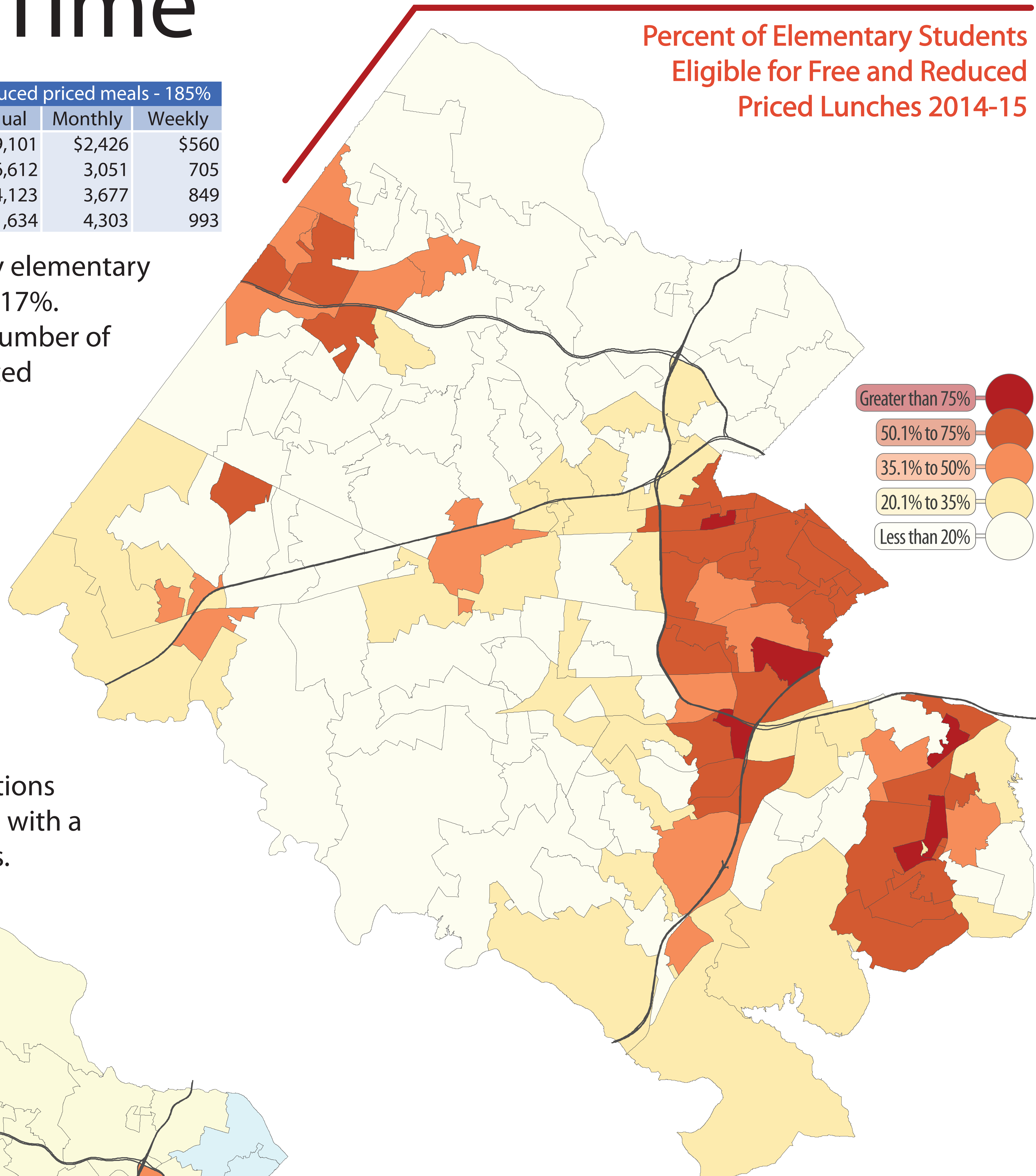
| Household Size | Free priced meals - 130% | | | Reduced priced meals - 185% | | |
|----------------|--------------------------|---------|--------|-----------------------------|---------|--------|
| | Annual | Monthly | Weekly | Annual | Monthly | Weekly |
| 2 | \$20,449 | \$1,705 | \$394 | \$29,101 | \$2,426 | \$560 |
| 3 | 25,727 | 2,144 | 495 | 36,612 | 3,051 | 705 |
| 4 | 31,005 | 2,584 | 597 | 44,123 | 3,677 | 849 |
| 5 | 36,283 | 3,024 | 698 | 51,634 | 4,303 | 993 |

From 2002-2014 the Fairfax County elementary student membership increased by 17%. During the same time period the number of students eligible for free and reduced lunches increased by 72%.

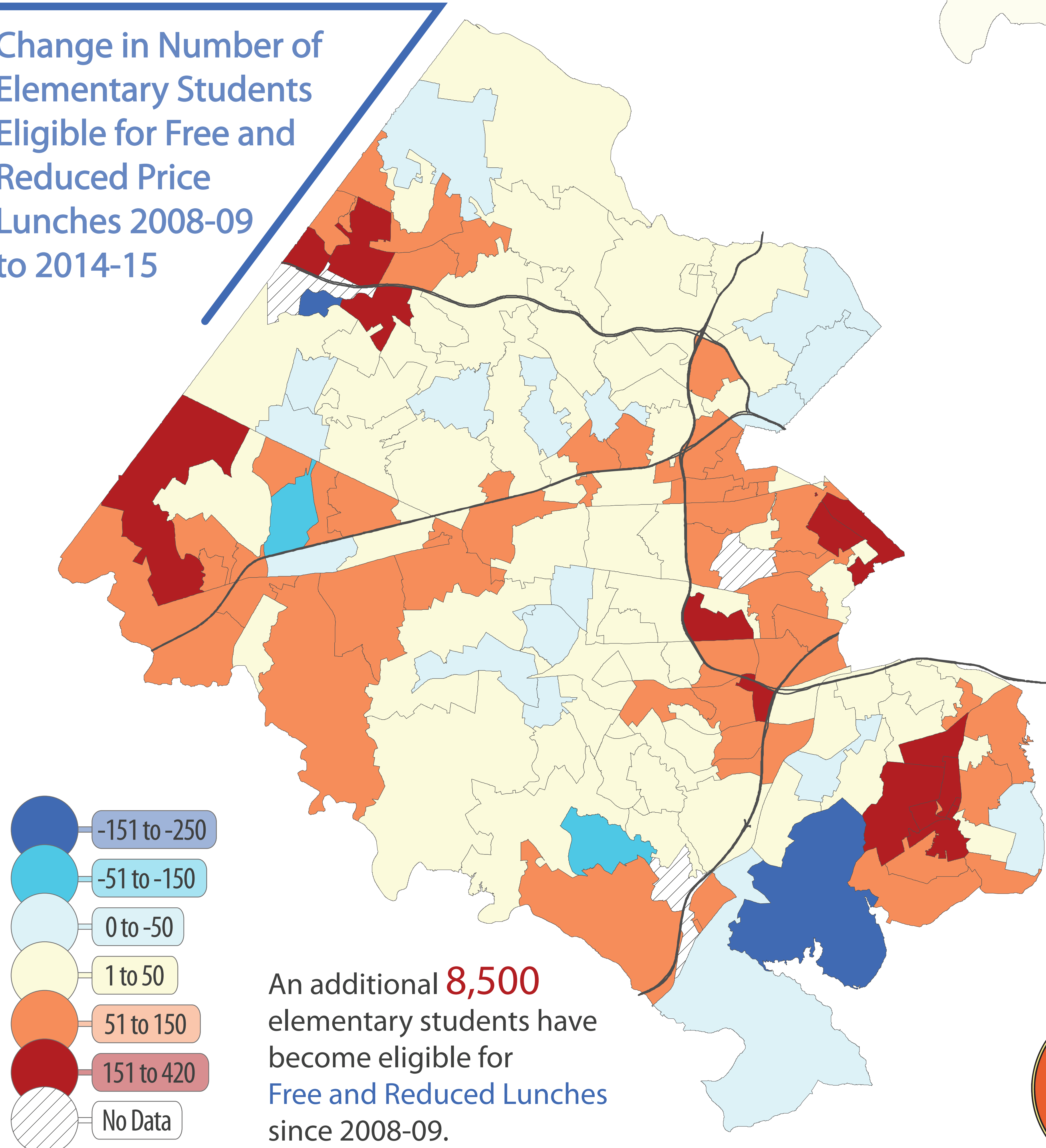
| | 2002-03 | 2008-09 | 2014-15 |
|--|---------|---------|---------|
| Total Student Membership | 84,858 | 87,864 | 99,393 |
| # of Students Eligible for F/R Lunches | 17,065 | 20,958 | 29,420 |
| % of Students Eligible for F/R Lunches | 20.1% | 23.9% | 29.6% |

For the 2014-15 school year, elementary school student populations ranged from 283 to 1,353 students, with a median population of 704 students.

Percent of Elementary Students Eligible for Free and Reduced Priced Lunches 2014-15

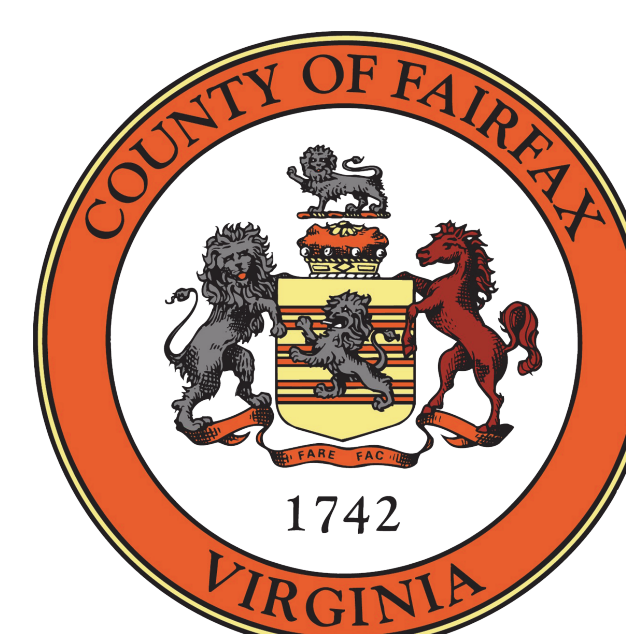
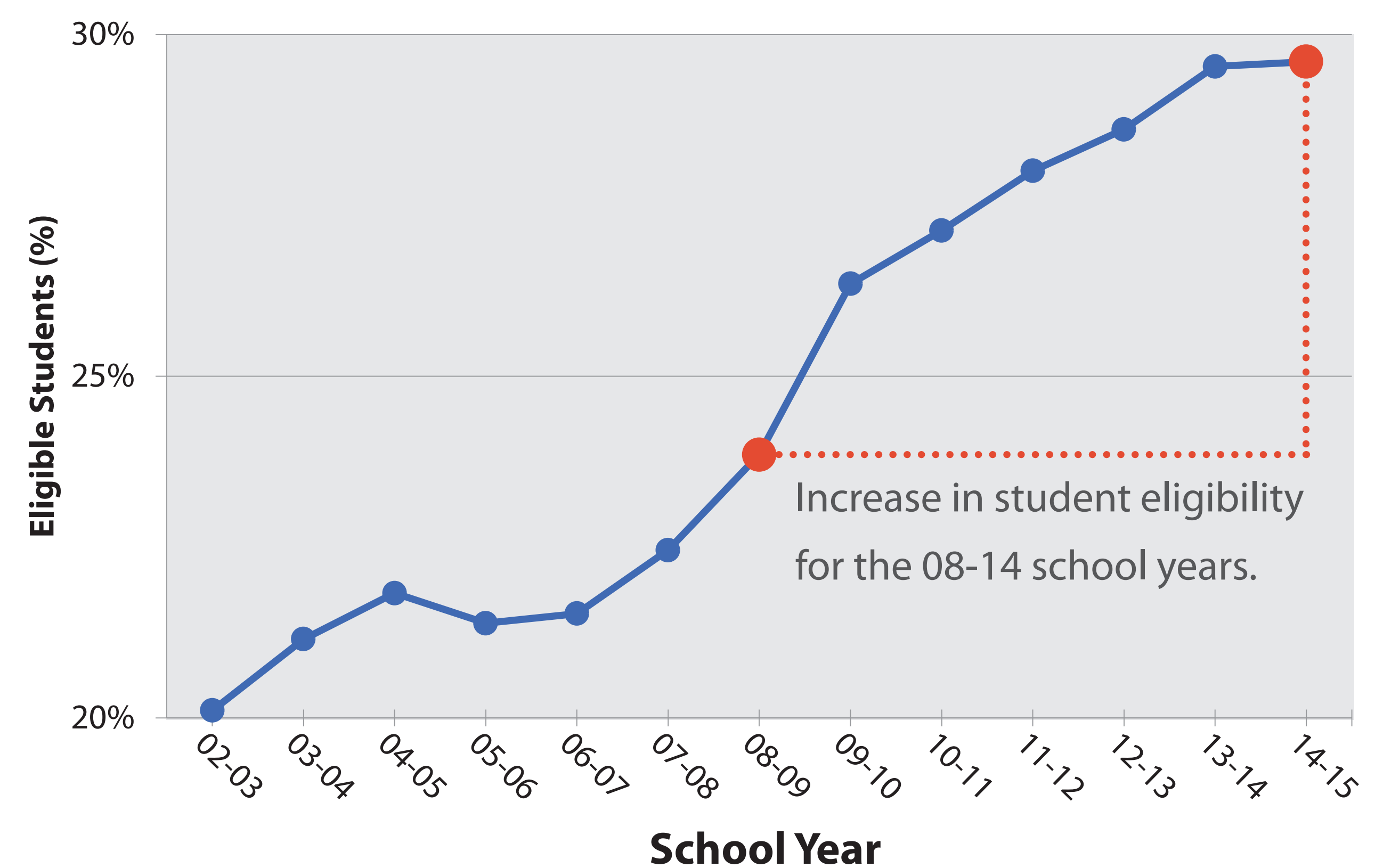


Change in Number of Elementary Students Eligible for Free and Reduced Price Lunches 2008-09 to 2014-15



An additional **8,500** elementary students have become eligible for **Free and Reduced Lunches** since 2008-09.

Elementary Students % Eligibility Free and Reduced Lunch 2002-2015



Source: Virginia Department of Education, National School Lunch Program (NSLP) Free and Reduced Price Eligibility Report, By Schools 2002-2015. Boundaries for the 2014-15 school year were used. Percent change could be influenced by boundary and enrollment changes. Elementary schools divided into upper and lower were combined in this analysis (Bailey's & Bailey's Upper, Kings Park & Kings Glen).
 Prepared by Erik Hovland, Economic, Demographic, and Statistical Research, Fairfax County Department of Neighborhood and Community Services, April 2015.
 To obtain this information in an alternative format please call 703-324-4600, TTY 711.