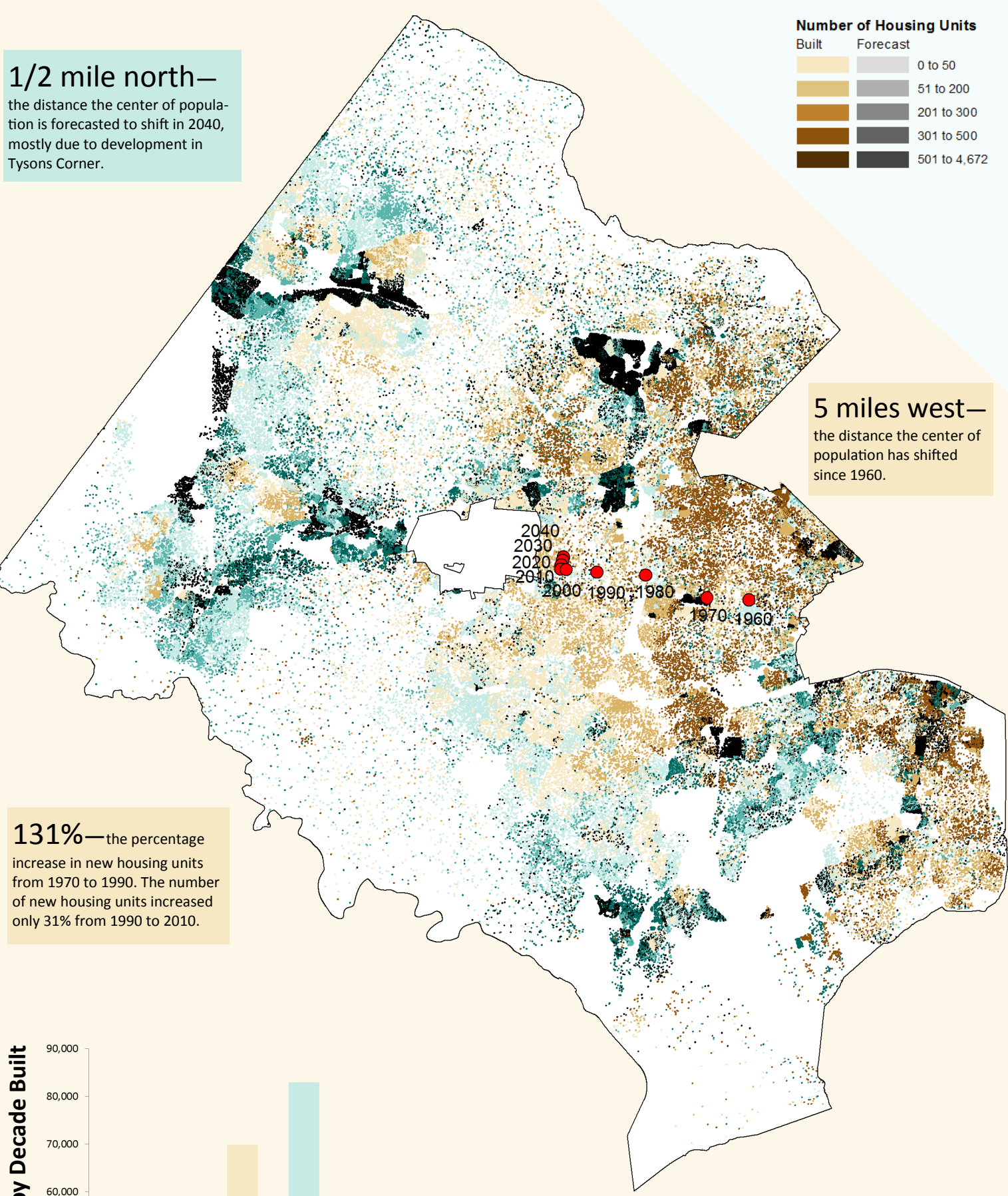
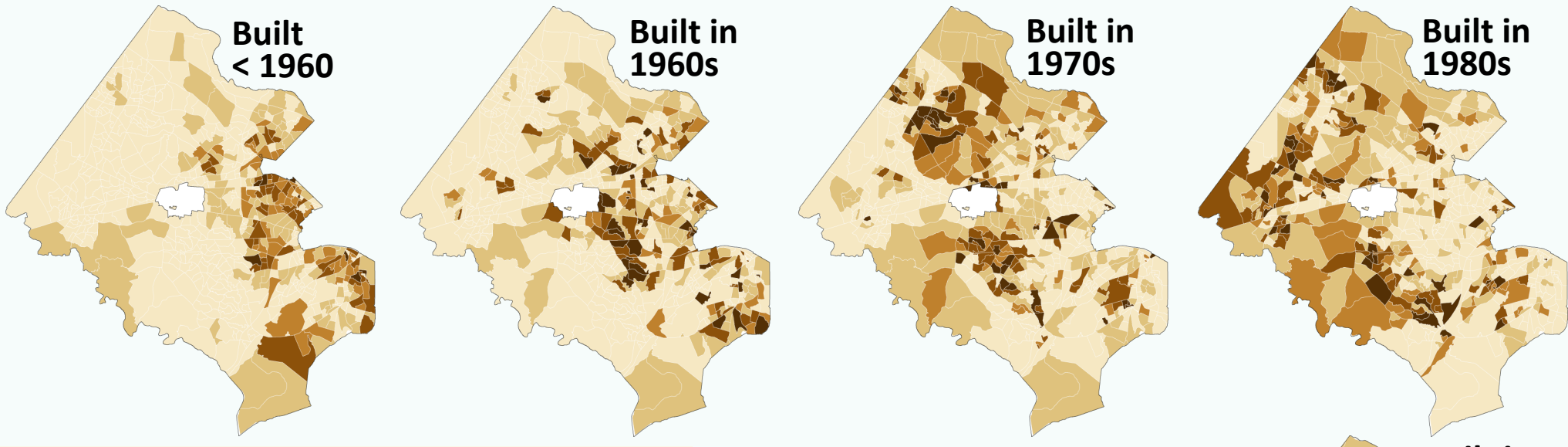


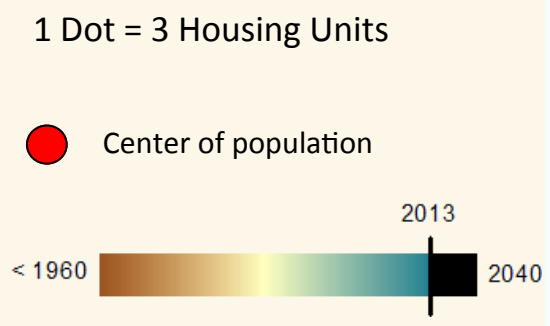
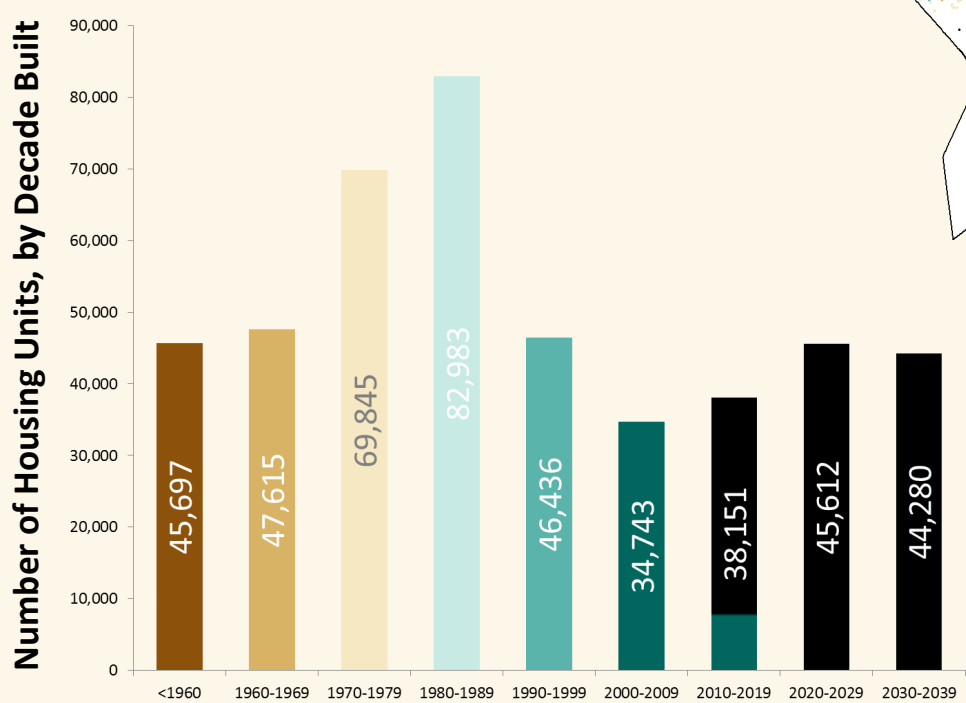
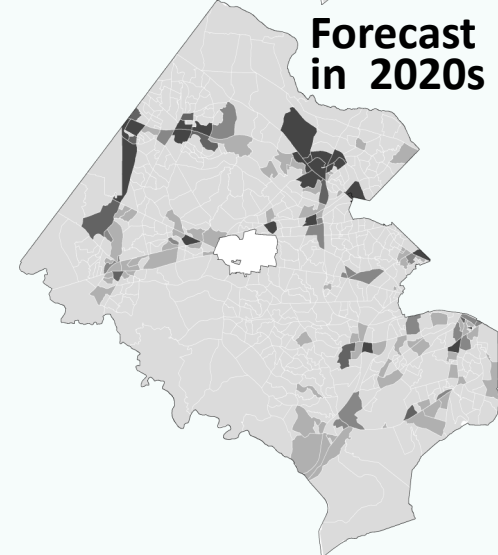
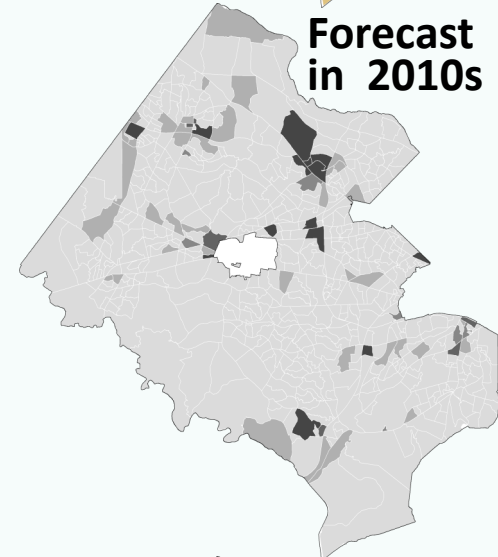
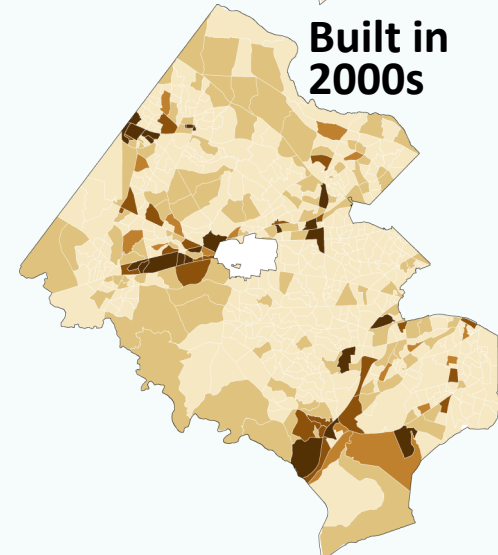
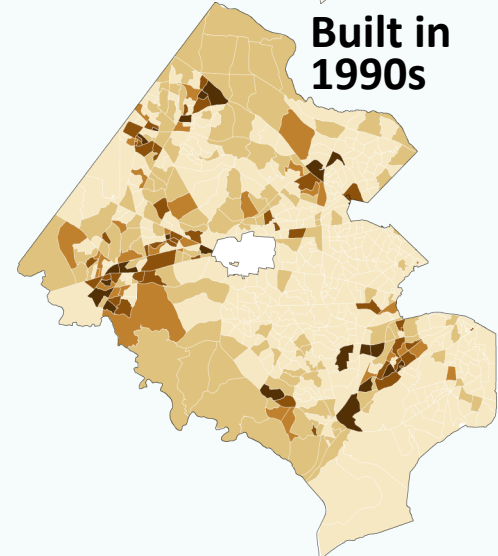
Housing and Population through the Decades in Fairfax County



1/2 mile north—
the distance the center of population is forecasted to shift in 2040, mostly due to development in Tysons Corner.

5 miles west—
the distance the center of population has shifted since 1960.

131%—the percentage increase in new housing units from 1970 to 1990. The number of new housing units increased only 31% from 1990 to 2010.



The red dot is the mean center of population. The mean center is an imaginary point on which a map would balance perfectly if all residents were of equal weight.

Note: Mobile homes are excluded. Source: Paul Maliszewski, Demographic, Economic and Statistical Research, Department of Neighborhood and Community Services, Fairfax County, Virginia, 2014.