



1982

PROFILE

FAIRFAX COUNTY

OFFICE OF RESEARCH AND STATISTICS

COUNTY OF FAIRFAX

*** BOARD OF SUPERVISORS ***

John F. Herrity
Chairman

Martha V. Pennino
Vice-Chairman
(Centreville District)

Joseph Alexander
Lee District

Audrey Moore
Annandale District

Thomas M. Davis
Mason District

James M. Scott
Providence District

Sandra L. Duckworth
Mt. Vernon District

Marie B. Travesky
Springfield District

Nancy K. Falck
Dranesville District

J. Hamilton Lambert
County Executive

James P. McDonald
Deputy County Executive for
Management and Budget

Timothy W. Jones, Director
Office of Research and Statistics

4100 Chain Bridge Road
Fairfax, Virginia 22030



FAIRFAX COUNTY PROFILE

Compiled by:
Fairfax County
Office of Research and Statistics

1982

Price: \$2.10

For Sale By:

Communications Division
(Publications, Sales, and Distribution)

The Massey Building
4100 Chain Bridge Road
Fairfax, Virginia 22030

703-691-2974

Price: \$2.10

Inquiries concerning the Fairfax County Profile should be directed to:

The Office of Research and Statistics

Management Services Branch

The Massey Building

4100 Chain Bridge Road

Fairfax, Virginia 22030

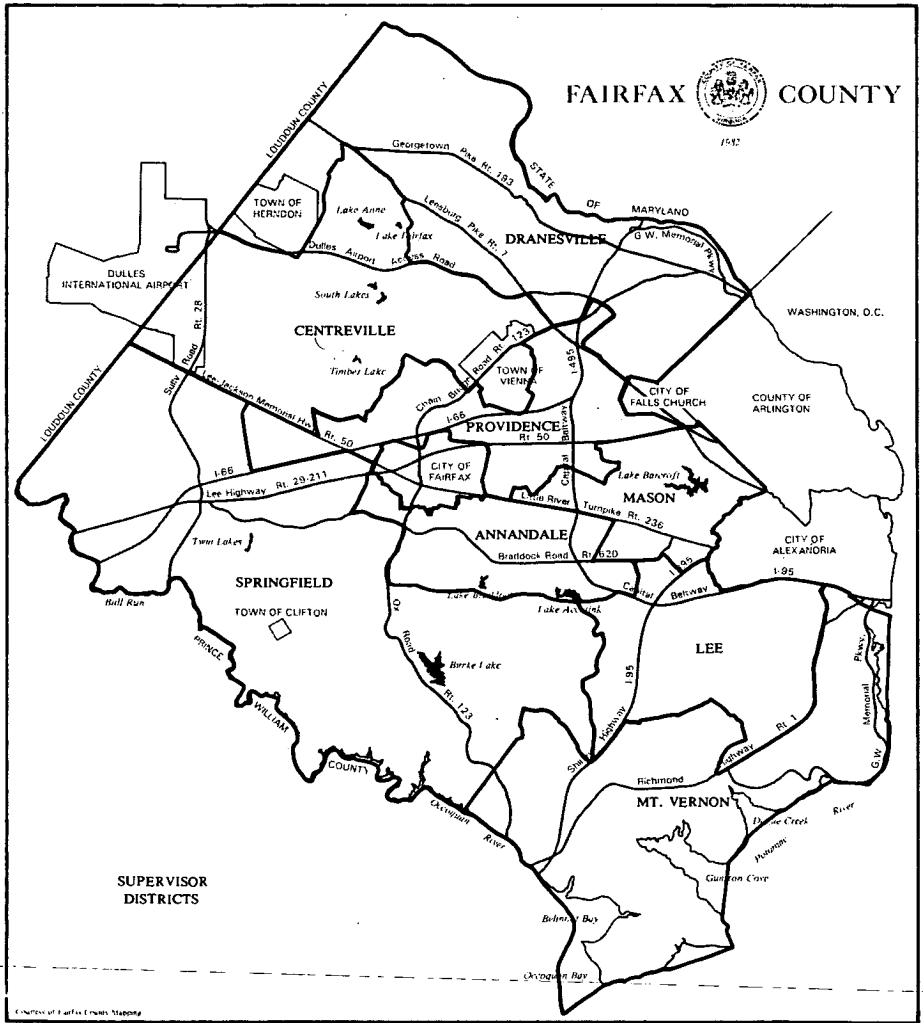
(703) 691-3341

TABLE OF CONTENTS

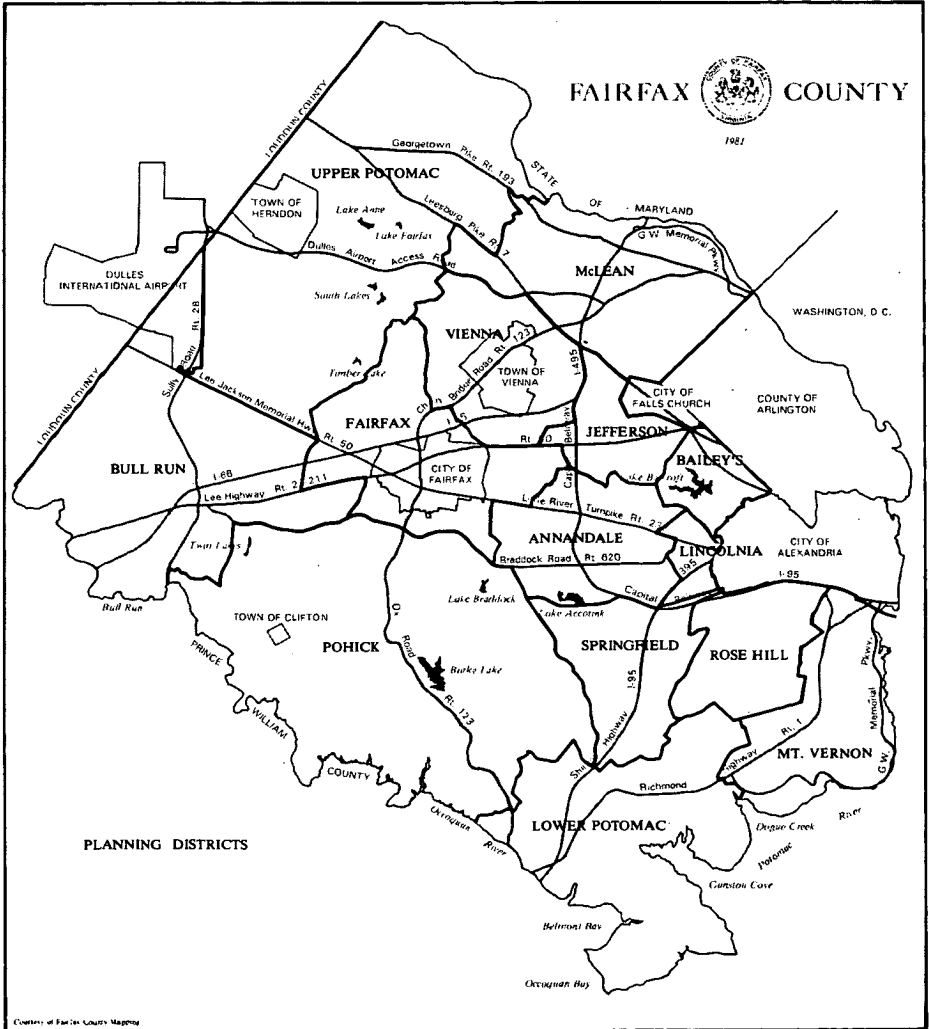
	<u>Section</u>
Maps and Natural Features	I
Population	II
Education	III
Employment	IV
Income	V
Residential Characteristics	VI
Nonresidential Characteristics	VII
Revenues and Expenditures	VIII
Government Services	IX
Glossary	X
Index	XI

I MAPS AND NATURAL FEATURES

SUPERVISOR DISTRICTS IN FAIRFAX COUNTY



PLANNING DISTRICTS IN FAIRFAX COUNTY



LAND AREA* BY JURISDICTION

Washington Metropolitan Region

Jurisdiction	Number	<u>Square Miles</u>	Percent
Fairfax County, Virginia	399		14.1%
Arlington County, Virginia	26		0.9
Prince William County, Virginia	347		12.3
Loudoun County, Virginia	517		18.3
Alexandria City, Virginia	15		0.5
Fairfax City, Virginia	6		0.2
Falls Church City, Virginia	2		0.1
Manassas City, Virginia	8		0.3
Manassas Park City, Virginia	2		0.1
Montgomery County, Maryland	495		17.5
Prince George's County, Maryland	485		17.2
Charles County, Maryland	459		16.3
District of Columbia	<u>61</u>		<u>2.2</u>
Regional Total	2,822		100.0%

*Includes dry land and land temporarily or partially covered by water; and lakes, reservoirs, and ponds less than 40 acres in area.

Source: U.S. Bureau of the Census, County and City Data Book, 1977.

LAND AREA* BY PLANNING DISTRICTS

Fairfax County

Planning District	Square Miles			
	Gross Area	Water Area	Net Area	
			Number	Percent
Annandale	19		19	4.8%
Baileys	6		6	1.5
Bull Run	50		50	12.5
Fairfax	21		21	5.3
Jefferson	9		9	2.3
Lincolnia	3		3	0.8
Lower Potomac	47	7	40	10.0
McLean	31		31	7.8
Mount Vernon	26	2	24	6.0
Pohick**	76	2	74	18.4
Rose Hill	14		14	3.5
Springfield	16		16	4.0
Upper Potomac***	73		73	18.3
Vienna****	<u>19</u>	<u>—</u>	<u>19</u>	<u>4.8</u>
County Total	410	11	399	100.0%

*Does not include the .08 square miles of land within the City of Fairfax on which the Fairfax County governmental center is located.

**Includes the Town of Clifton.

***Includes the Town of Herndon.

****Includes the Town of Vienna.

Source: Fairfax County Division of Communications.

NORMAL MONTHLY TEMPERATURE*

Washington, D.C. Area

Month	Average Temperature	Maximum Temperature**	Minimum Temperature***
January	35.6	43.5	27.7
February	37.3	46.0	28.6
March	45.1	55.0	35.2
April	56.4	67.1	45.7
May	66.2	76.6	55.7
June	74.6	84.6	64.6
July	78.7	88.2	69.1
August	77.1	86.6	67.6
September	70.6	80.2	61.0
October	59.8	69.8	49.7
November	48.0	57.2	38.8
December	37.4	45.2	29.5
Annual	57.2	66.7	47.8

*Based on standard 30 year period, 1941 to 1970.

**Maximum temperature is the average of the highest daily temperatures reached during the period shown.

***Minimum temperature is the average of the lowest daily temperatures reached during the period shown.

Source: U.S. National Oceanic and Atmospheric Administration, Local Climatological Data, 1980 Washington, D.C. National Airport.

HIGHEST AND LOWEST TEMPERATURE OF RECORD*

Washington, D.C. Area

Month	Highest Temperature**	Lowest Temperature**
January	79	2
February	82	4
March	89	11
April	95	24
May	97	34
June	101	47
July	103	55
August	100	51
September	101	39
October	94	29
November	86	16
December	75	1
Annual	103	1

*Data through 1980.

**In fahrenheit degrees.

Source: U.S. National Oceanic and Atmospheric Administration,
Local Climatological Data, 1980 Washington, D.C. National
Airport.

NORMAL MONTHLY AND ANNUAL PRECIPITATION*

Washington, D.C. Area

Month	Normal Precipitation (in inches)
January	2.62
February	2.45
March	3.33
April	2.86
May	3.68
June	3.48
July	4.12
August	4.67
September	3.08
October	2.66
November	2.90
December	3.04
Annual	38.89

*Based on standard 30 year period, 1941 to 1970.

Source: U.S. National Oceanic and Atmospheric Administration, Local Climatological Data, 1980 Washington, D.C. National Airport.

II POPULATION

SUMMARY OF ACTUAL AND PROJECTED POPULATION GROWTH

Fairfax County, 1900 to 1990

Year	Total Population	Average Annual Growth Rate For Preceding Period	Average Annual Population Increase For Preceding Period
1900	18,580	--	--
1910	20,536	1.0%	196
1920	21,943	0.7	141
1930	25,264	1.4	332
1940	40,929	4.9	1,566
1950	98,557	9.2	5,763
1960	248,897	9.7	15,034
1970	454,275*	6.2	20,538
1980	596,901	2.8	14,263
1985	649,114	1.7	10,400
1990	708,079	1.7	11,800

*Datum is 1970 Census figure after 1975 revision.

Sources: 1900-1980 -- U.S. Bureau of the Census.
1985-1990 -- Fairfax County Office of Research and Statistics.

POPULATION GROWTH

Fairfax County, 1970 to 1982

Year	Total Population	Annual Growth Rate	Annual Population Increase
1970	454,275*	---	---
1971	470,600	3.6%	16,300
1972	487,600	3.6	17,000
1973	505,700	3.7	18,100
1974	522,200	3.3	16,500
1975	537,200	2.9	15,000
1976	554,500	3.2	17,300
1977	562,800	1.5	8,300
1978	571,000	1.5	8,200
1979	584,200	2.3	13,200
1980	596,901	2.2	12,701
1981	612,600	2.6	15,700
1982	620,800	1.3	8,200

*Datum is 1970 Census total population figure after 1975 revision.

Sources: 1970 and 1980 — U.S. Census, Department of Commerce.
Data obtained from the Fairfax County Office of
Research and Statistics for the years 1971 to 1979,
1981, and 1982.

ACTUAL AND PROJECTED POPULATION BY PLANNING DISTRICT

Fairfax County, 1970 to 1990

Planning District	1970	1980	1985	1990
Annandale	62,635	66,822	64,525	62,507
Baileys	30,112	30,290	30,919	29,793
Bull Run	14,006	23,664	30,907	53,553
Fairfax	22,889	32,272	35,089	40,650
Jefferson	40,989	38,152	35,365	35,440
Lincolnia	11,123	9,622	9,190	9,682
Lower Potomac	21,497	16,726	21,247	23,540
McLean	46,866	54,340	58,516	57,592
Mount Vernon	76,730	79,533	81,680	83,960
Pohick*	14,902	71,543	88,763	93,891
Rose Hill	21,859	23,246	22,421	30,656
Springfield	32,970	31,262	34,811	36,566
Upper Potomac**	20,062	71,039	86,365	99,992
Vienna***	38,381	48,390	49,316	50,257
County Total	455,021****	596,901	649,114	708,079

*Includes the Town of Clifton.

**Includes the Town of Herndon.

***Includes the Town of Vienna.

****Datum is 1970 Census total population figure before 1975 revision.

Sources: 1970 and 1980 — U.S. Bureau of the Census.
1985 and 1990 — Fairfax County Office of Research and Statistics.

CURRENT POPULATION ESTIMATES AND DENSITIES

BY SUPERVISOR DISTRICT

Fairfax County, 1982

Supervisor District	Estimated Population	Acres*	Persons Per Acre	Square Miles*	Persons Per Square Mile
Centreville**	79,309	33,686	2.4	52.63	1,507
Dranesville***	81,458	38,825	2.1	60.66	1,343
Annandale	70,453	11,493	6.1	17.96	3,928
Lee	74,279	18,261	4.1	28.53	2,604
Mason	70,736	10,019	7.1	15.65	4,520
Mount Vernon	79,632	36,311	2.2	56.74	1,403
Providence	77,926	16,019	4.9	25.03	3,113
Springfield****	86,949	69,368	1.3	108.39	802
County Total	620,832	233,982	2.7	365.6	1,698

*Excludes area consisting of roads, water, and small areas of land that cannot be developed.

**Includes the Town of Vienna.

***Includes the Town of Herndon.

****Includes the Town of Clifton.

Note: One square mile equals 640 acres, however, the square miles given in this chart are not equivalent due to rounding.

Source: Fairfax County Office of Research and Statistics, 1982 Standard Reports.

CURRENT POPULATION ESTIMATES AND DENSITIES

BY PLANNING DISTRICT

Fairfax County, January 1982

Planning District	Estimated Population	Acres*	Persons Per Acre	Square Miles*	Persons Per Square Mile
Annandale	65,884	10,154	6.5	15.87	4,151
Baileys	29,838	3,442	8.7	5.38	5,546
Bull Run	24,562	30,608	0.8	47.83	514
Fairfax	31,653	11,701	2.7	18.28	1,732
Jefferson	35,338	4,973	7.1	7.77	4,548
Lincolnia	9,227	1,706	5.4	2.67	3,456
Lower Potomac	19,236	23,637	0.8	36.93	521
McLean	56,126	16,590	3.4	25.92	2,165
Mount Vernon	80,781	11,785	6.9	18.41	4,388
Pohick**	83,524	46,586	1.8	72.79	1,147
Rose Hill	22,646	8,332	2.7	13.02	1,739
Springfield	33,875	9,080	3.7	14.19	2,387
Upper Potomac***	80,107	44,623	1.8	69.72	1,149
Vienna****	48,035	10,765	4.5	16.82	2,856
County Total	620,832	233,982	2.7	365.60	1,698

*Excludes areas consisting of roads, water, and small areas of land that cannot be developed.

**Includes the Town of Clifton.

***Includes the Town of Herndon.

****Includes the Town of Vienna.

Note: One square mile equals 640 acres, however, square miles given in this chart are not equivalent to acres due to rounding.

Source: Fairfax County Office of Research and Statistics, 1982 Standard Reports.

CENSUS POPULATION BY AREA JURISDICTION

1970 and 1980

Jurisdiction	1970	1980	Change: 1970 to 1980	
			Number	Percent
Fairfax County	454,275*	596,901	142,626	31.4%
Arlington County	174,284	152,599	-21,685	-12.4
Alexandria City	110,927	103,217	-7,710	-7.9
Loudoun County	37,150	57,427	20,277	54.6
Prince William County**	111,102	166,665	55,563	40.0
Falls Church City	10,772	9,515	-1,257	-11.7
Fairfax City	22,727	19,390	-3,337	-14.7
Montgomery County	522,809	579,053	56,244	10.8
Prince George's County	661,719	665,071	3,352	0.5
District of Columbia	<u>756,668</u>	<u>637,651</u>	<u>-119,017</u>	-15.7
Total	2,862,433	2,987,489	125,056	4.4%

*Datum is 1970 Census total population figure after 1975 revision.

**Includes the independent cities of Manassas and Manassas Park.

Sources: 1970, 1980 U.S. Census.

PERCENTAGE DISTRIBUTION OF POPULATION BY RACE

Fairfax County, 1970 and 1980

Race or Ethnicity	1970		1980	
	Number	Percent	Number	Percent
White	424,114	93.2%	509,790	85.4%
Black	15,859	3.5	34,994	5.9
Spanish	11,623	2.6	19,535	3.3
Asian	1,833	0.4	22,725	3.8
American Indian	427	0.1	1,235	0.2
Other	<u>1,165</u>	<u>0.2</u>	<u>8,622</u>	<u>1.4</u>
Total	455,021*	100.0%	596,901	100.0%

*The Census Bureau revised the County's 1970 population total to 454,275 in September 1975. However, population breakdowns were not made available based on the revised total.

Sources: 1970 and 1980 U.S. Census.

PERCENTAGE DISTRIBUTION OF RACIAL COMPOSITION

BY PLANNING DISTRICT

Fairfax County, 1982

Planning District	Percentage					Total
	White	Black	Oriental	Hispanic	Other	
Annandale	91.4%	1.4%	5.3%	1.3%	0.6%	100.0%
Baileys	79.6	4.1	9.2	4.6	2.5	100.0
Bull Run	95.1	0.4	2.9	1.6	0	100.0
Fairfax	93.7	2.1	2.7	0.9	0.6	100.0
Jefferson	85.5	5.3	4.2	3.2	1.8	100.0
Lincolnia	70.8	13.0	13.4	2.8	0	100.0
Lower Potomac	88.6	8.7	1.1	0.6	1.0	100.0
McLean	91.2	1.3	4.2	1.4	1.9	100.0
Mount Vernon	83.2	7.6	4.4	3.9	0.9	100.0
Pohick*	95.9	0.7	3.4	0	0	100.0
Rose Hill	89.0	3.9	2.2	3.1	1.8	100.0
Springfield	91.6	1.0	2.2	3.9	1.3	100.0
Upper Potomac**	91.8	2.8	2.9	1.6	0.9	100.0
Vienna***	93.6	3.2	1.8	0.4	1.0	100.0

*Includes the Town of Clifton.

**Includes the Town of Herndon.

***Includes the Town of Vienna.

Source: Fairfax County Office of Research and Statistics, 1982 Household Survey.

POPULATION BY AGE GROUP, 1980

Jurisdiction	Age Group				Total Population
	0 to 4	5 to 17	18 to 64	65 and Over	
Fairfax County	38,326	137,108	393,478	26,989	596,901
Arlington County	6,889	18,080	109,948	17,682	152,599
Prince William County*	15,743	44,305	102,016	4,601	166,665
Loudoun County	4,261	14,576	34,716	3,874	57,427
Alexandria City	5,486	13,452	74,814	9,465	103,217
Fairfax City	1,129	3,844	13,337	1,080	19,390
Falls Church City	449	1,359	6,391	1,316	9,515
Montgomery County	33,374	120,937	373,837	50,905	579,053
Prince George's County	46,419	148,205	433,939	36,508	665,071
District of Columbia	<u>34,365</u>	<u>109,126</u>	<u>420,555</u>	<u>74,287</u>	<u>638,333</u>
Total SMSA**	192,416	631,118	2,006,676	230,712	3,060,992

* Includes the independent cities of Manassas and Manassas Park.

** Includes Charles County.

Source: Metropolitan Washington Council of Governments, COG Census Report Number 2, March 1982.

POPULATION AGE DISTRIBUTION

Fairfax County, 1960, 1970, and 1980

Age Group	1960		1970		1980	
	Number	Percent	Number	Percent	Number	Percent
Under 5	34,475	13.8%	40,726	9.0%	38,326	6.4%
5 - 9	33,902	13.6	52,113	11.4	45,307	7.6
10 - 14	27,034	10.9	56,178	12.3	54,936	9.2
15 - 19	15,881	6.4	42,934	9.4	54,754	9.2
20 - 24	13,136	5.3	34,269	7.5	47,646	8.0
25 - 34	36,708	14.7	64,926	14.3	112,191	18.8
35 - 44	47,981	19.3	67,648	14.9	98,037	16.4
45 - 54	22,834	9.2	59,141	13.0	70,151	11.8
55 - 64	9,686	3.9	23,412	5.2	48,564	8.1
65 and Over	<u>7,260</u>	<u>2.9</u>	<u>13,674</u>	<u>3.0</u>	<u>26,989</u>	<u>4.5</u>
Total	248,897	100.0%	455,021*	100.0%	596,901	100.0%
Median Age	25.0 years		25.2 years		29.1 years	

*Datum is 1970 Census total population figure before 1975 revision.

Sources: U.S. Bureau of the Census, U.S. Census of Population 1960, 1970.
General Population Characteristics, Virginia, PC(1)-B48. 1960 Census figures
are corrected and do not include Fairfax City.
1980 Census data provided by Metropolitan Washington Council of Governments.

SEX COMPOSITION

Fairfax County, 1960 to 1995

<u>Year</u>	<u>Percent Male</u>	<u>Percent Female</u>
1960	52.4%	47.6%
1970	50.0	50.0
1975	49.1	50.9
1980	48.6	51.4
1985	47.4	52.6
1990	47.2	52.8
1995	47.4	52.6

Source: U.S. Bureau of the Census, Census of Population, 1960 and 1970. Washington Center for Metropolitan Studies, Trends Alert, 1975; unpublished projections by Sex, 1985 to 1995. Fairfax County Office of Research and Statistics, 1980.

RESIDENT BIRTHS BY NUMBER AND RATE PER 1,000 POPULATION

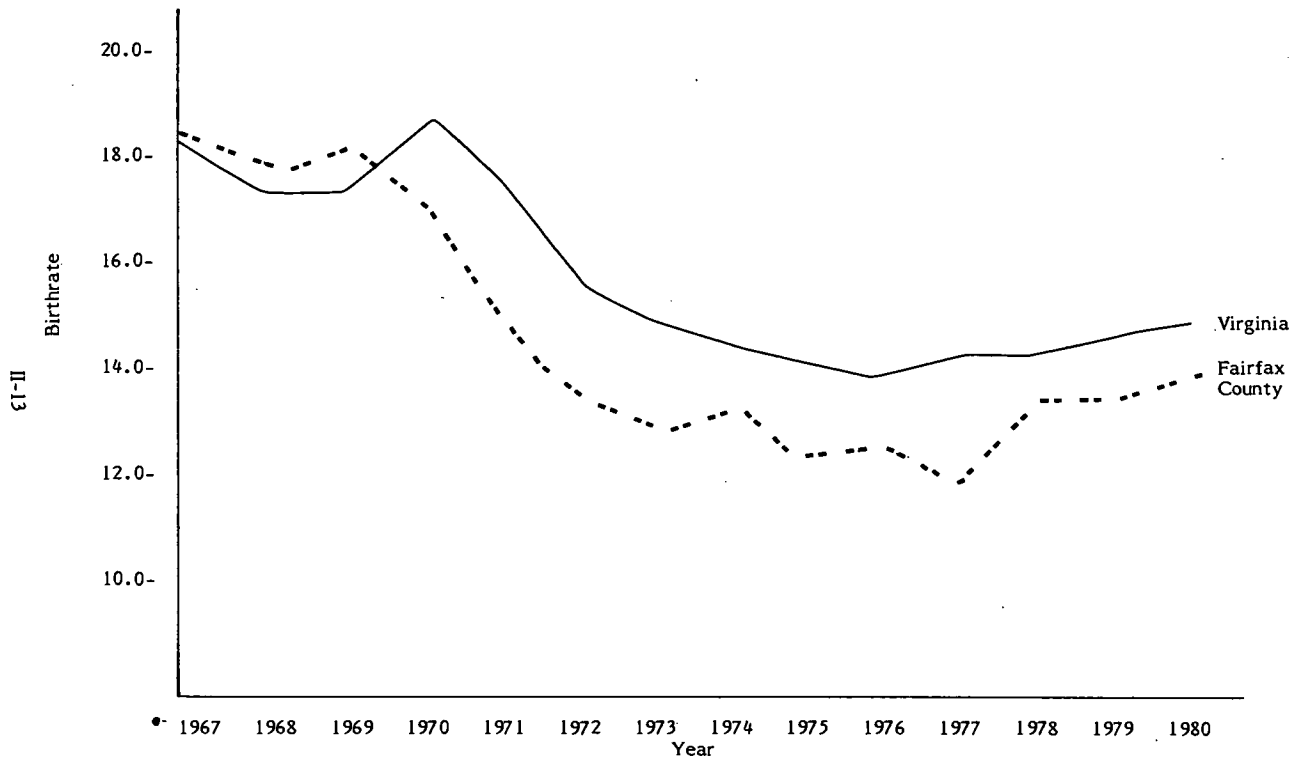
Fairfax County and Virginia, 1967 to 1981

Year	Fairfax County		Virginia	
	Number	Rate	Number	Rate
1967	6,935	18.3	82,775	18.0
1968	7,280	17.8	82,138	17.5
1969	7,732	17.9	83,420	17.4
1970	7,815	17.2	86,081	18.5
1971	7,275	14.7	82,713	17.5
1972	6,508	13.3	75,068	15.8
1973	6,450	12.8	71,665	14.9
1974	6,391	12.6	71,066	14.5
1975	6,248	12.2	70,032	14.1
1976	6,589	12.4	69,972	13.9
1977	6,461	12.0	72,981	14.2
1978	7,226	13.4	73,349	14.2
1979	7,806	13.4	76,899	14.6
1980	8,329	14.0	78,423	14.7
1981	8,796	14.2	79,278	14.6

Source: Virginia Department of Health, Center for Health Statistics.

BIRTHS BY RATE PER 1,000 POPULATION*

Fairfax County and Virginia, 1967 to 1980



*Rates for cities and counties have been calculated on estimated July 1 household populations.

RESIDENT BIRTHS BY AGE OF MOTHER

Fairfax County and Virginia, 1981

Age of Mother	Fairfax County		Virginia	
	Number	Percent	Number	Percent
Under 15 Years	9	0.1%	242	0.3%
15-19	570	6.5	11,306	14.3
20-24	1,866	21.2	25,426	32.1
25-29	2,955	33.6	24,461	30.8
30-34	2,557	29.1	13,900	17.5
35-39	749	8.5	3,456	4.4
40-44	85	1.0	451	0.6
45 and Over	2	*	21	*
Unknown	<u>3</u>	<u>*</u>	<u>15</u>	<u>*</u>
Total	8,796	100.0%	79,278	100.0%
Median Age	28.3		25.5	

* Less than 0.1 percent

Source: Virginia Department of Health, Center for Health Statistics.

REPORTED ILLEGITIMATE LIVE BIRTHS, INFANT DEATHS,
INDUCED ABORTIONS, AND PREMATURE BIRTHS

Fairfax County, 1970 to 1980

Year	Illegitimate Births*	Infant Deaths**	Induced Abortions	Premature Births***
1970	---	127	---	---
1971	---	113	---	---
1972	282	91	---	---
1973	316	76	---	360
1974	303	90	---	343
1975	343	75	1,210	312
1976	420	63	1,660	353
1977	508	49	2,602	362
1978	557	59	3,389	369
1979	638	84	3,393	454
1980	750	75	3,663	482

*Illegitimate births are births of infants whose mothers were not married at the time of birth or married to the father at anytime during the preceding ten months.

**Infant deaths are deaths of children under one year of age.

***Premature birth is also known as immature births of 5lbs. 8oz. or less.

Source: Virginia Department of Health, Center for Health Statistics.

RESIDENT DEATHS BY NUMBER AND RATE PER 1,000 POPULATION

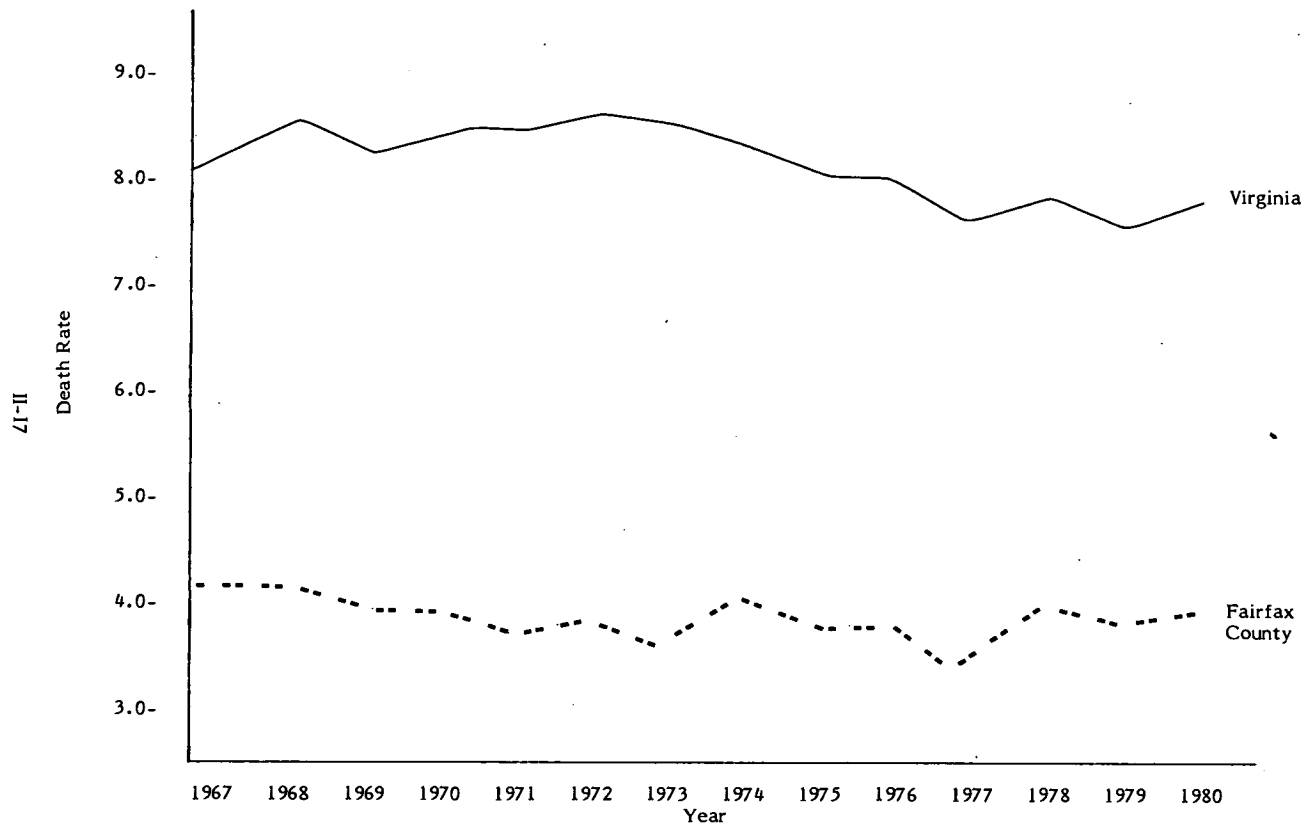
Fairfax County and Virginia, 1967 to 1980

Year	Fairfax County		Virginia	
	Number	Rate	Number	Rate
1967	1,584	4.2	37,191	8.1
1968	1,701	4.2	39,687	8.5
1969	1,716	4.0	39,048	8.2
1970	1,829	4.0	39,009	8.4
1971	1,873	3.8	39,464	8.4
1972	1,988	3.9	40,886	8.6
1973	1,971	3.7	41,103	8.5
1974	2,168	4.2	40,561	8.3
1975	2,022	3.9	39,543	8.0
1976	2,076	3.9	40,056	8.0
1977	1,903	3.5	39,418	7.7
1978	2,197	4.1	40,649	7.9
1979	2,331	4.0	40,667	7.7
1980	2,409	4.0	42,496	7.9

Source: Virginia Department of Health, Center for Health Statistics.

DEATHS BY RATE PER 1,000 POPULATION*

Fairfax County and Virginia, 1967 to 1980



*Rates for cities and counties have been calculated on estimated July 1 household populations.

PRIMARY CAUSE OF DEATH BY PLACE OF RESIDENCE

Fairfax County, Northern Virginia, and Virginia; 1980

Cause of Death	<u>Fairfax County</u>		<u>Northern Virginia</u>		<u>Virginia</u>	
	Number	Percent	Number	Percent	Number	Percent
Major Cardiovascular Diseases	1028	42.7%	2,432	44.0%	20,612	48.5%
Diseases of Heart	765	31.8	1,859	33.6	15,733	37.0
Rheumatic Fever and Rheumatic Heart Disease	15	0.6	23	0.4	118	0.3
Hypertensive Heart Disease	20	0.8	48	0.9	439	1.0
Hypertensive Heart and Renal Disease	1	--	7	0.1	90	0.2
Ischemic Heart Disease	548	22.8	1,320	23.9	11,063	26.0
Other Diseases of Endocardium	16	0.7	33	0.6	145	0.4
All Other Forms of Heart Disease	165	6.9	428	7.7	3,878	9.1
Hypertension	10	0.4	21	0.4	156	0.4
Cerebrovascular Diseases	191	7.9	422	7.6	3,750	8.8
Arteriosclerosis	35	1.5	78	1.4	579	1.4
Other Diseases of Arteries, Arterioles, and Capillaries	27	1.1	52	1.0	394	0.9
Malignant Neoplasms	695	28.9	1,449	26.2	9,139	21.5
Accidents	137	5.7	313	5.7	2,450	5.8
Diabetes Mellitus	40	1.7	93	1.7	691	1.6
Pneumonia and Influenza	41	1.7	120	2.2	1,149	2.7
Chronic Obstructive Pulmonary Diseases	54	2.2	148	2.7	1,130	2.6
Chronic Liver Disease and Cirrhosis	32	1.3	99	1.8	608	1.4
Congenital Anomalies	27	1.1	63	1.1	333	0.8
Suicide	74	3.1	134	2.4	718	1.7
Homocide and Legal Intervention	25	1.0	51	0.9	496	1.2
Other External Causes	1	--	4	0.1	29	0.1
Certain Conditions Originating in the Perinatal Period	48	2.0	90	1.6	591	1.4
All Other Causes	207	8.6	531	9.6	4,550	10.7
Total	2,409	100.0%	5,527	100.0%	42,496	100.0%

81-II

Source: Virginia Department of Health, Center for Health Statistics.

MARITAL STATUS OF PERSONS 14 YEARS OF AGE
AND OLDER, FAIRFAX COUNTY, 1970 - 1980

Marital Status	1970		1980	
	Number	Percent	Number	Percent
Never Married	76,893	24.3%	120,945	26.4%
Married	218,268	68.9	281,612	61.4
Separated	4,580	1.4	13,054	2.9
Divorced	6,448	2.0	25,438	5.5
Widowed	<u>10,770</u>	<u>3.4</u>	<u>17,463</u>	<u>3.8</u>
Total	316,959	100.0%	458,512	100.0%

Sources: 1970 - U.S. Bureau of the Census.
1980 Census data provided by Metropolitan Washington Council
of Governments.

MARRIAGES BY PLACE OF OCCURRENCE

Fairfax County and Virginia, 1967 to 1981

Year	Fairfax County		Virginia	
	Number	Percent Change	Number	Percent Change
1967	1,928	N/A	48,653	N/A
1968	2,059	6.8%	52,173	7.2%
1969	1,880	-8.7	52,575	0.8
1970	1,983	5.5	51,964	-1.2
1971	1,830	-7.7	52,158	0.4
1972	1,971	7.7	55,863	7.1
1973	1,979	0.4	58,431	4.6
1974	2,149	8.6	56,617	-3.1
1975	2,437	13.4	54,400	-3.9
1976	2,177	-10.7	56,362	3.6
1977	2,711	24.5	57,737	2.4
1978	2,929	8.0	58,967	2.1
1979	2,895	-1.2	58,678	-0.5
1980	3,151	8.8	60,210	2.6
1981	3,741	18.7	61,410	2.0

Source: Virginia Department of Health, Center for Health Statistics.

DIVORCES BY PLACE OF OCCURRENCE

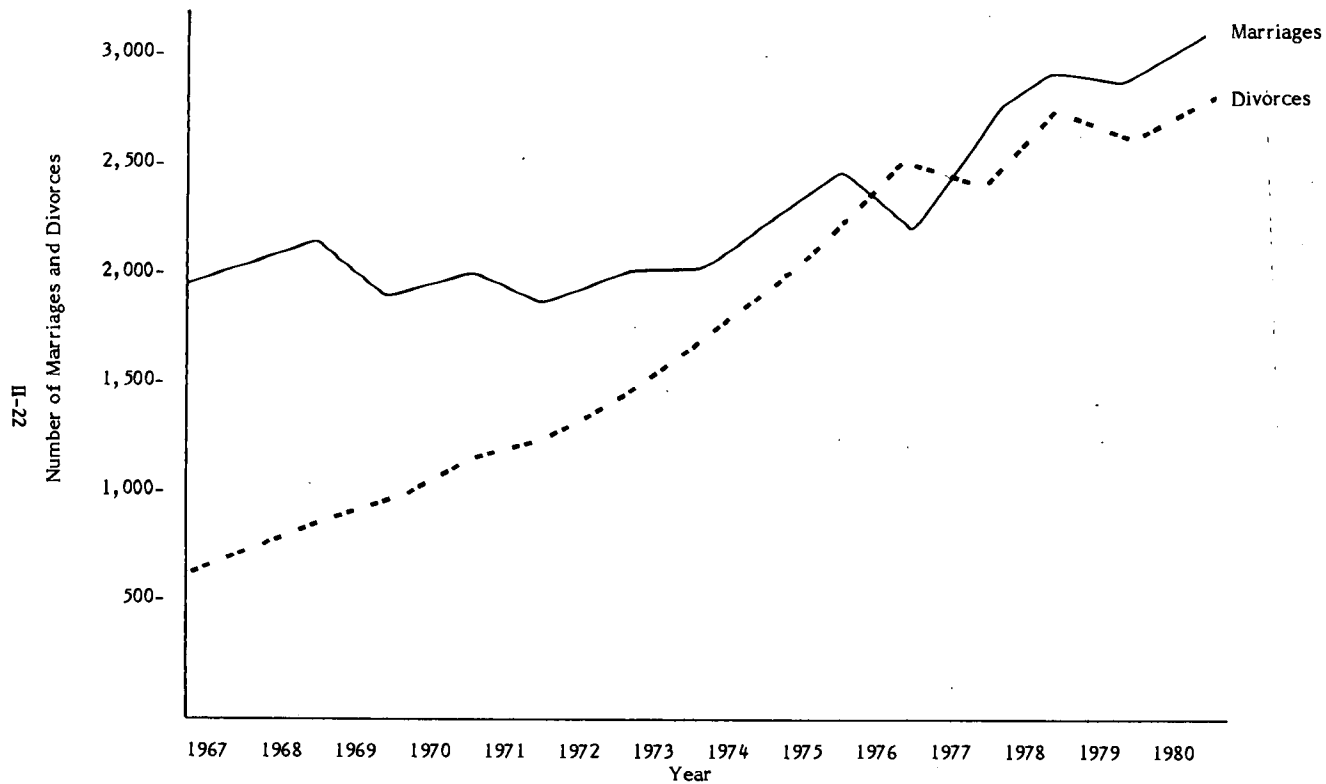
Fairfax County and Virginia, 1967 to 1981

Year	Fairfax County		Virginia	
	Number	Percent Change	Number	Percent Change
1967	716	N/A	9,682	N/A
1968	804	12.3%	10,571	9.2%
1969	933	16.0	11,417	8.0
1970	1,019	9.2	11,879	4.0
1971	1,265	24.1	13,261	11.6
1972	1,397	10.4	14,155	6.7
1973	1,612	15.4	16,078	13.6
1974	1,818	12.8	16,704	3.9
1975	2,041	12.3	19,311	15.6
1976	2,522	23.6	21,377	10.7
1977	2,470	-2.1	21,535	0.7
1978	2,686	8.7	22,654	5.2
1979	2,552	-0.5	23,555	4.0
1980	2,731	7.0	23,615	0.3
1981	2,898	6.1	25,103	6.3

Source: Virginia Department of Health, Center for Health Statistics.

NUMBER OF MARRIAGES AND DIVORCES

Fairfax County, 1967 to 1980



*Fairfax City and Falls Church divorce data included in Fairfax County divorce rate.

POPULATION, HOUSEHOLDS, AND HOUSEHOLD SIZE

By Area Jurisdictions, 1980

Jurisdiction	Population In Households	Population In Group Quarters	Households	Population Per Household
Fairfax County	590,211	6,690	205,166	2.88
Arlington County	148,515	4,084	71,615	2.07
Prince William County*	164,475	2,190	50,696	3.24
Loudoun County	56,827	600	18,653	3.05
Alexandria City	101,556	1,661	49,004	2.07
Fairfax City	18,976	414	6,881	2.76
Falls Church City	9,479	36	4,250	2.23
Montgomery County	573,421	5,632	207,195	2.77
Prince George's County	649,665	15,406	224,789	2.89
District of Columbia	<u>605,752</u>	<u>31,899</u>	<u>252,952</u>	2.39
Total	2,918,877	68,612	1,091,201	2.67

*Includes the independent cities of Manassas and Manassas Park.

Source: 1980 U.S. Census.

HOUSEHOLD SIZE BY JURISDICTION

1970 and 1980

Jurisdiction	Number in Household						Total
	1	2	3	4	5	6+	
	<u>1970</u>						
Fairfax County, Virginia	7.9%	24.1%	20.6%	22.3%	13.8%	11.3%	100.0%
Arlington County, Virginia	29.6	34.4	15.8	10.8	5.3	4.1	100.0
Alexandria City, Virginia	26.5	32.9	17.6	12.0	5.8	5.2	100.0
Montgomery County, Maryland	13.5	26.7	18.0	19.0	12.2	10.6	100.0
Prince George's County, Maryland	12.0	26.6	20.1	18.8	11.4	11.1	100.0
District of Columbia	32.1	26.6	14.5	10.6	6.8	9.4	100.0
Total SMSA*	19.4	26.9	17.7	16.2	9.9	9.9	100.0
	<u>1980</u>						
Fairfax County, Virginia	17.1%	30.3%	20.2%	19.4%	8.5%	4.5%	100.0%
Arlington County, Virginia	40.4	33.5	12.9	8.0	3.2	2.0	100.0
Alexandria City, Virginia	41.3	32.8	12.7	7.7	3.2	2.3	100.0
Montgomery County, Maryland	21.0	30.8	18.4	17.1	8.0	4.7	100.0
Prince George's County, Maryland	20.1	28.0	20.0	17.2	8.5	6.2	100.0
District of Columbia	39.5	25.8	13.5	9.6	5.3	6.3	100.0
Total SMSA*	25.7	29.0	17.6	15.3	7.2	5.2	100.0

*Includes the jurisdictions cited, the counties of Loudoun and Prince William, and the cities of Fairfax and Falls Church in Virginia.

Sources: U.S. Department of Commerce, Bureau of the Census, Census Tracts, PHC(1)-226.
COG Census Report Number 2, March 1982.

DISTRIBUTION OF HOUSEHOLDS BY SIZE

Fairfax County, 1970 - 1980

Size of Household	1970		1980	
	Number	Percent	Number	Percent
One Person	9,998	7.9%	35,002	17.1%
Two Person	30,480	24.1	62,114	30.3
Three Person	26,050	20.6	41,535	20.2
Four Person	28,263	22.3	39,873	19.4
Five Person	17,435	13.8	17,461	8.5
Six or More Persons	<u>14,290</u>	<u>11.3</u>	<u>9,181</u>	<u>4.5</u>
Total	126,516	100.0%	205,166	100.0%
Average Household Size		3.51		2.88

Sources: 1970 — U.S. Bureau of the Census.
1980 Census data provided by Metropolitan Washington Council of Governments.

CENSUS HOUSEHOLDS BY AREA JURISDICTION

1970 and 1980

Jurisdiction	1970	1980	<u>Change: 1970 to 1980</u>	
			Number	Percent
Fairfax County	126,516	205,166	78,650	62.3%
Arlington County	69,360	71,615	2,255	3.3
Prince William County*	27,760	50,696	22,936	82.6
Loudoun County	10,402	18,653	8,251	79.3
Alexandria City	42,477	49,004	6,527	15.4
Fairfax City	6,122	6,881	759	12.4
Falls Church City	3,685	4,250	565	15.3
Montgomery County	156,674	207,195	50,521	32.2
Prince George's County	192,962	224,789	31,827	16.5
District of Columbia	<u>262,538</u>	<u>252,952</u>	<u>-9,586</u>	-3.7
Total	898,496	1,091,201	192,705	21.4%

*Includes the independent cities of Manassas and Manassas Park.

Sources: 1970, 1980 U.S. Census.

HOUSEHOLD FORECASTS BY JURISDICTION

Washington Metropolitan Region, 1980-2000

Jurisdiction	Year				
	Actual 1980	1985	1990	1995	2000
Fairfax County	205,166	236,700	265,100	295,900	330,500
Arlington County	71,615	83,000	89,000	94,000	100,000
Prince William County*	50,696	63,000	74,000	84,000	94,000
Loudoun County	18,653	30,000	38,000	45,000	53,000
Alexandria City	49,004	56,000	62,000	64,000	65,000
Fairfax City	6,881	7,600	7,900	8,200	8,500
Falls Church City	4,250	4,700	4,900	5,100	5,300
Montgomery County	207,195	227,500	252,000	274,500	294,000
Prince George's County	224,789	247,000	274,000	293,000	311,000
District of Columbia	252,952	285,000	287,000	289,000	291,000
Total Region	1,091,201	1,240,500	1,353,900	1,452,700	1,552,300

*Includes the independent cities of Manassas and Manassas Park.

Sources: 1980 - U.S. Bureau of the Census.
Metropolitan Washington Council of Governments, Cooperative Forecasting Program.

HOUSEHOLD RELATIONSHIPS BY JURISDICTION

1970 and 1980

Jurisdiction	<u>Husband-Wife Headed Households</u>		<u>Other Headed Households</u>	
	1970	1980	1970	1980
Fairfax County, Virginia	82.9%	66.6%	17.1%	33.4%
District of Columbia	43.2	29.5	56.8	70.5
Montgomery County, Maryland	76.0	61.9	24.0	38.1
Prince George's County, Maryland	75.1	56.1	24.9	43.9
Alexandria City, Virginia	56.7	36.3	43.3	63.7
Arlington County, Virginia	55.5	39.6	44.5	60.4
Total SMSA*	65.0	52.6	35.0	47.4

*Includes the jurisdictions cited above, the counties of Loudoun and Prince William, and the cities of Fairfax and Falls Church in Virginia.

Sources: U.S. Bureau of the Census, Census of Population and Housing:
1970, Census Tracts, PHC(1)-226.
1980 Census Data provided by Metropolitan Washington Council
of Governments.

ONE-PARENT FAMILIES

1970 and 1980

Jurisdiction	Number		Change: 1970 to 1980	
	1970	1980	Number	Percent
Fairfax County	6,181	14,885	8,704	141%
Arlington County	2,869	3,710	841	29
Prince William County*	1,190	3,982	2,792	235
Loudoun County	411	1,342	931	227
Alexandria City	2,420	3,642	1,222	50
Fairfax City	384	561	177	46
Falls Church City	203	242	39	19
Montgomery County	6,771	14,192	7,421	110
Prince George's County	10,765	27,610	16,845	156
District of Columbia	<u>26,540</u>	<u>38,825</u>	<u>12,285</u>	46
SMSA**	58,416	111,078	52,662	90%

*Includes the independent cities of Manassas and Manassas Park.

**Includes Charles County.

Source: Metropolitan Washington Council of Governments, COG Census Report
Number 2, March 1982.

ESTIMATED NET IN-MIGRATION*

Fairfax County, 1960 to 1980

Year	Total Population Increase	Natural** Increase	Estimated Net In-Migration	Percent Net In-Migration of Total Increase
1960	9,900	5,500	4,400	44.4
1961	16,900	5,300	11,600	68.6
1962	16,700	5,100	11,600	69.5
1963	21,500	5,400	16,100	74.9
1964	15,600	5,800	9,800	62.8
1965	21,000	5,300	15,700	74.8
1966	28,600	5,400	23,200	81.1
1967	30,200	5,400	24,800	82.1
1968	23,200	5,600	17,600	75.9
1969	21,800	6,000	15,800	72.5
1970	16,300	6,000	10,300	63.2
1971	17,000	5,400	11,600	68.2
1972	18,100	4,500	13,600	75.1
1973	16,500	4,500	12,000	72.7
1974	15,000	4,200	10,800	72.0
1975	17,300	4,200	13,100	75.7
1976	13,100	4,500	8,600	65.6
1977	8,200	4,600	3,600	43.9
1978	13,200	5,000	8,200	62.1
1979	12,700	5,500	7,200	56.7
1980	15,700	5,900	9,800	62.4

*Estimated net migration is total annual increase minus natural increase.

**Natural increase is total births minus total deaths.

Sources: Fairfax County Office of Research and Statistics.
Virginia Department of Health, Bureau of Vital Records and Health
Statistics.

PROFILE OF GEOGRAPHIC MOBILITY OF HOUSEHOLD HEADS
LIVING IN FAIRFAX COUNTY, 1980

Mobility Status	Place of Residence in 1978	Place of Residence in 1979	Number of Households	Percent
Intra-County Mover	Fairfax County	Different House in County	19,900	9.7%
Intra-State Mover	Other Jurisdictions in Virginia	Fairfax County	10,400	5.1
Interstate Mover	Other State	Fairfax County	16,000	7.8
International Mover	Abroad	Fairfax County	3,300	1.6
Non-Mover	Fairfax County	Same House in County	155,200	75.8
Total			204,800	100.0%

Source: Fairfax County Office of Research and Statistics, 1980 Household Survey.

III EDUCATION

III EDUCATION

EDUCATIONAL ATTAINMENT OF PERSONS

25 YEARS OF AGE AND OLDER

Fairfax County, 1970 and 1980

Educational Attainment	1970		1980	
	Number	Percent	Number	Percent
No school years completed	820	0.4%	100	0.0%*
Elementary	21,693	9.5	8,200	2.3
High school: 1-3 years	26,013	11.4	11,800	3.3
4 or more years	71,955	31.3	80,300	22.4
College: 1-3 years	39,161	17.1	77,100	21.5
4 or more years	<u>69,293</u>	<u>30.3</u>	<u>181,000</u>	<u>50.5</u>
Total	228,935	100.0%	358,500	100.0%
Median school years completed	12.9 years		16.0 years	
Percent high school graduates	78.8%		94.4%	
Percent college graduates	30.3%		50.5%	

*Less than one-tenth of one percent.

Sources: 1970 - U.S. Bureau of the Census
 1980 - Fairfax County Office of Research and Statistics, 1980 Household Survey.

MEDIAN YEARS OF SCHOOL COMPLETED BY PLANNING DISTRICT

Fairfax County, 1970

<u>Planning District</u>	<u>Median Years of School Completed</u>
Annandale	13.95
Baileys	12.91
Bull Run	12.86
Fairfax	13.58
Jefferson	12.71
Lincolnia	12.95
Lower Potomac	12.34
McLean	13.93
Mount Vernon	12.79
Pohick*	12.93
Rose Hill	12.52
Springfield	13.29
Upper Potomac**	13.65
Vienna***	12.84
County Median	12.90

*Includes the Town of Clifton.

**Includes the Town of Herndon.

***Includes the Town of Vienna.

Source: U.S. Bureau of the Census, U.S. Census of Population and Housing: 1970, Census Tracts, PHC(1)-226.

SCHOOL MEMBERSHIP*

Fairfax County, School Years 1968-1969 to 1981-1982

School Year	Public Schools	George Mason University	All Campuses Northern Virginia Community College
1968-1969	122,077	1,445	5,271
1969-1970	129,979	1,890	7,629
1970-1971	133,362	2,390	9,718
1971-1972	135,948	3,110	12,047
1972-1973	135,780	4,125	13,974
1973-1974	135,839	4,926	17,261
1974-1975	136,508	6,124	21,439
1975-1976	136,944	8,022	27,198
1976-1977	134,567	8,470	26,557
1977-1978	132,217	8,920	29,735
1978-1979	129,423	10,767	31,599
1979-1980	127,978	12,249	31,764
1980-1981	126,775	13,293	33,899
1981-1982	124,260	14,263	35,282

*Based on September or fall membership.

Sources: Fairfax County Public Schools, Office of Records
Management.
George Mason University, Office of the Registrar.
Northern Virginia Community College, Office of
Institutional Research.

ESTIMATES AND PROJECTIONS OF PUBLIC SCHOOL MEMBERSHIP*

Fairfax County, School Years 1970-1971 to 1984-1985

	Head Start	K	1	2	3	4	5	6	7	8	9	10	11	12	Special Educa.	Northern Virginia Training Center	Total
1970 (Actual)	194	8,159	9,341	10,184	10,175	10,707	10,689	10,545	10,937	10,839	11,149	10,252	9,676	9,095	1,420	--	133,362
1971 (Actual)	167	7,843	8,833	10,129	10,521	10,415	11,051	10,978	11,095	11,090	11,505	11,067	9,907	9,584	1,763	--	135,948
1972 (Actual)	174	7,628	8,261	9,314	10,412	10,710	10,501	11,127	11,514	11,249	11,688	11,217	10,409	9,752	1,824	--	135,780
1973 (Actual)	124	8,155	8,126	8,885	9,488	10,521	10,826	10,692	11,483	11,400	11,787	11,561	10,543	10,145	2,103	--	135,839
1974 (Actual)	113	8,795	8,880	8,663	8,987	9,626	10,619	10,851	11,078	11,451	11,893	11,617	10,938	10,338	2,659	--	136,508
1975 (Actual)	175	8,707	9,699	9,151	8,869	9,490	9,877	11,021	11,262	11,335	12,256	11,675	10,917	10,635	1,875	--	136,944
1976 (Actual)	139	7,552	9,505	9,622	9,271	9,037	9,430	9,919	10,986	11,265	11,978	11,796	11,176	10,702	2,189	107	134,674
1977 (Actual)	172	6,825	8,607	9,682	9,542	9,410	9,237	9,628	9,973	11,087	11,886	11,430	11,214	10,964	2,560	95	132,312
1978 (Actual)	161	6,427	7,822	8,756	9,791	9,845	9,456	9,304	9,704	10,113	11,765	11,578	10,948	10,954	2,799	101	129,524
1979 (Actual)	171	6,565	7,644	8,065	8,821	9,878	9,818	9,314	9,383	9,554	10,957	11,443	11,130	10,578	4,657	85	128,063
1980 (Actual)	201	6,357	7,805	7,663	8,417	9,392	10,350	10,238	9,929	9,631	10,610	10,674	10,963	10,887	3,658	85	126,860
1981 (Actual)	187	6,484	7,449	7,697	7,943	8,617	9,565	10,449	10,506	10,076	10,328	10,209	10,319	10,587	3,862	81	124,359
1982 (Projected)	284	6,424	7,476	7,434	8,104	7,960	8,611	9,550	10,890	10,548	10,450	9,868	9,808	10,070	4,345	--	121,822
1983 (Projected)	294	6,678	7,619	7,652	8,002	8,247	8,167	8,793	10,204	10,995	11,126	10,253	9,503	9,561	4,343	--	121,437
1984 (Projected)	311	7,134	7,869	7,860	8,265	8,242	8,487	8,409	9,422	10,431	11,556	10,796	9,896	9,286	4,343	--	122,307

*Based on September membership.

Source: Fairfax County Public Schools, Office of Records Management and the Facilities Services Department.

TOTAL NUMBER OF PUBLIC SCHOOLS IN OPERATION

BY YEAR AND LEVEL

Fairfax County, School Years 1960 - 1961 to 1981 - 1982

School Year	Elementary	Intermediate	Secondary	Special Education Centers	Total
1960 - 1961	73	8	12		93
1961 - 1962	78	10	11		99
1962 - 1963	81	11	14		106
1963 - 1964	85	11	15		111
1964 - 1965	91	12	16		119
1965 - 1966	98	15	16		129
1966 - 1967	100	16	17		133
1967 - 1968	106	17	18		141
1968 - 1969	116	17	19		152
1969 - 1970	124	17	19		160
1970 - 1971	123	18	19		160
1971 - 1972	125	18	20		163
1972 - 1973	127	18	20		165
1973 - 1974	128	18	22		168
1974 - 1975	124	17	22	5	168
1975 - 1976	124	17	22	6	169
1976 - 1977	123	18	22	14	177
1977 - 1978	122	18	23	21	184
1978 - 1979	122	18	23	21	184
1979 - 1980	126	18	23	21	188
1980 - 1981	121	20	23	21	185
1981 - 1982	120	20	23	19	182

Source: Fairfax County Public Schools, Office of Records Management.

PER PUPIL COST OF EDUCATION

Fairfax County, School Years 1963-1964 to 1981-1982

School Year	Operating Cost Per Pupil
1963-1964	\$ 438
1964-1965	464
1965-1966	513
1966-1967	560
1967-1968	635
1968-1969	692
1969-1970	774
1970-1971	855
1971-1972	917
1972-1973	1,021
1973-1974	1,151
1974-1975	1,316
1975-1976	1,482
1976-1977	1,641
1977-1978	1,824
1978-1979	2,006
1979-1980	2,243
1980-1981	2,715
1981-1982	3,134*

*Estimate

Source: Fairfax County Public Schools, Office of
Records Management.

AVERAGE ANNUAL SALARY OF PUBLIC SCHOOL PERSONNEL

Fairfax County, School Year 1981-1982

Number of Positions	Classification	Average Salary
Principal Positions:		
120	Elementary Schools Only	\$37,021
20	Intermediate Schools Only	\$42,343
<u>23</u>	Secondary Schools Only	\$45,668
	Overall Average	\$39,028
163	Total	
Assistant Principal Positions:		
35	Elementary Schools Only	\$30,819
27	Intermediate Schools Only	\$35,167
<u>82</u>	Secondary Schools Only	\$39,564
	Overall Average	\$36,511
144	Total	
48	Instructional Supervisory Positions	\$39,063
57	Visiting Teacher Positions	\$23,786
2,396	Elementary Teaching Positions (K-6)	\$23,403
942	Intermediate Teaching Positions (7-8)	\$24,083
1,909	Secondary Teaching Positions (9-12)	\$25,143

Source: Fairfax County Public Schools, Office of Salary and Benefit Services.

AVERAGE SALARY OF TEACHERS

Fairfax County, School Years 1972-1973 to 1981-1982

School Year	Average Salary
1972-1973	\$12,288
1973-1974	\$12,973
1974-1975	\$13,854
1975-1976	\$15,227
1976-1977	\$16,360
1977-1978	\$17,212
1978-1979	\$18,562
1979-1980	\$19,642
1980-1981	\$21,981
1981-1982	\$23,977

Source: Fairfax County Public Schools, Office of Salary and Benefit Services.

HANDICAPPED CHILDREN RECEIVING
SPECIAL EDUCATION AND RELATED SERVICES
BY AGE AND DISABILITY
Fairfax County, December 1981

Major Handicapping Disability	Age of Handicapped Children (Years)				
	0 - 5	6 - 17	18 - 21	Total	Percent
Mentally Retarded	42	543	87	672	5.1%
Hard of Hearing	2	114	5	121	0.9
Deaf	27	79	0	106	0.8
Speech Impaired	522	3,122	35	3,679	27.8
Visually Impaired	11	59	1	71	0.5
Seriously Emotionally Disturbed	2	438	31	471	3.6
Orthopedically Impaired	26	176	12	214	1.6
Other Health Impaired	--	29	4	33	0.2
Specific Learning Disabled	122	7,401	165	7,688	58.0
Multiple Handicapped	33	133	36	202	1.5
Deaf and Blind	--	<u>4</u>	--	<u>4</u>	--
Total	787	12,098	376	13,261	100.0%

Source: Fairfax County Public Schools, Department of Student Services and Special Education.

IV EMPLOYMENT

NONAGRICULTURAL EMPLOYMENT BY PLACE OF WORK

Fairfax County, 1960 to 1980*

Year	Total Employment	Employment Increase	Percent Change
1960	39,158	---	---
1961	40,031	873	2.2%
1962	42,185	2,154	5.4
1963	46,520	4,335	10.3
1964	51,666	5,146	11.1
1965	59,780	8,114	15.7
1966	70,153	10,373	17.4
1967	72,649	2,496	3.6
1968	84,416	11,767	16.2
1969	94,546	10,130	12.0
1970	96,666	2,120	2.2
1971	99,877	3,211	3.3
1972	112,136	12,259	12.3
1973	113,618	1,482	13.2
1974	122,156	8,538	7.5
1975	125,599	3,443	2.8
1976	136,697	11,098	8.8
1977	145,091	8,394	6.1
1978	158,930	13,839	9.5
1979	176,252	17,322	10.9
1980	192,361	16,109	9.1

*Data are as of March of each year.

Source: Virginia Employment Commission, Office of Research Analysis,
Population and Labor Force Data.

NONAGRICULTURAL EMPLOYMENT WITHIN FAIRFAX COUNTY BY INDUSTRY

1970, 1975, and 1980

Industry	1970	1975	1980
Construction	7,684	9,286	17,268
Manufacturing	3,815	6,096	8,702
Transportation, Public Utilities	1,616	4,496	7,734
Wholesale and Retail Trade	18,877	32,770	48,153
Finance, Insurance, Real Estate	5,002	6,402	13,096
Services	15,336	28,581	52,387
Federal Government	12,798	14,034	14,832
State and Local Government	16,848	23,268	29,001
Mining and Other Nonmanufacturing	<u>525</u>	<u>666</u>	<u>1,188</u>
Total	82,501	125,599	192,361

Source: Virginia Employment Commission, Office of Research Analysis, Population and Labor Force Data, March 1970, 1975, and 1980.

EMPLOYMENT FORECASTS* BY JURISDICTION

Washington Metropolitan Region, 1980 to 2000

Jurisdiction	Actual 1980	1985	1990	1995	2000
Fairfax County	192,361	221,000	266,000	318,000	372,000
Arlington County	123,011	160,000	175,000	188,000	198,000
Prince William County**	26,786	56,000	65,000	74,000	84,000
Loudoun County	17,527	29,000	37,000	47,000	58,000
Alexandria City	55,045	71,000	78,000	80,000	80,000
Fairfax City	12,850	20,000	21,000	23,000	24,000
Falls Church City	15,131	12,000	13,000	13,500	14,000
Montgomery County	276,692	326,000	371,000	403,000	440,000
Prince George's County	213,181	292,000	342,000	384,000	426,000
District of Columbia	674,600	665,000	679,000	690,000	701,000
Total Region	1,607,184	1,852,000	2,047,000	2,220,000	2,397,000

*Employment forecasts exclude military employment and projections of self-employed persons.

**Includes the independent cities of Manassas and Manassas Park.

Sources: 1980, Virginia Employment Commission, Metropolitan Washington Council of Governments, Maryland - National Capital Park and Planning Commission.
1985 - 2000, Metropolitan Washington Council of Governments, Cooperative Forecasting Program.

EMPLOYMENT BY JURISDICTION

Washington Metropolitan Region, 1975 to 1980*

Jurisdiction	Number of Employees					
	1975	1976	1977	1978	1979	1980
Fairfax County, Virginia**	202,270	206,402	218,272	228,789	247,230	254,991
Arlington County, Virginia	140,782	142,764	147,895	153,800	155,698	163,298
Loudoun County, Virginia	13,877	14,442	15,038	15,766	17,322	17,704
Prince William County, Virginia	41,207	42,079	44,511	46,680	49,619	51,127
Alexandria City, Virginia	53,137	54,552	57,409	60,275	66,081	68,284
Montgomery County, Maryland	246,553	255,017	271,479	284,845	270,116	280,130
Prince George's County, Maryland	206,361	211,811	224,078	234,571	229,811	235,432
Charles County, Maryland	14,827	15,280	17,463	17,463	19,182	19,918
District of Columbia	626,589	626,589	633,620	647,244	678,538	683,501
Total Region	1,545,602	1,568,936	1,629,766	1,689,433	1,733,597	1,774,385

*Data as of October for years 1975 to 1979; data as of June for year 1980.

**Includes the cities of Fairfax and Falls Church.

Source: Metropolitan Washington Council of Governments, Area Regional Employment Allocation System.

EMPLOYMENT BY OCCUPATION

Fairfax County 1960, 1970, 1975

	1960		1970		Average Annual Change 1960-1970 Percent	1975		Average Annual Change 1970-1975 Percent
	Number	Percent	Number	Percent		Number	Percent	
White Collar	51,853	65.0%	123,070	75.2%	13.7%	165,400	75.8%	7.5%
Professional/Managerial	28,567	35.8	71,754	43.8	15.1	101,700	46.6	9.1
Clerical	17,015	21.3	38,121	23.3	12.4	47,700	21.9	5.5
Sales	6,271	7.9	13,195	8.1	11.0	16,000	7.3	4.6
Blue Collar	25,217	31.6	40,486	24.7	6.1	43,600	20.0	1.7
Craftsmen	11,466	14.4	15,841	9.7	3.8	23,500	10.8	10.5
Operatives	5,000	6.2	7,832	4.8	5.7	7,000	3.2	-2.6
Laborers	1,890	2.4	2,885	1.8	5.3	2,700	1.2	-1.5
Farm	523	0.7	345	0.2	-5.2	---	---	---
Service	4,547	5.7	12,088	7.4	16.6	9,500	4.0	-5.9
Private Household	1,791	2.2	1,495	0.9	-2.0	900	0.4	-14.4
Not Reported	2,715	3.4	---	---	---	9,200	4.2	---
Total	79,785	100.0%	163,556	100.0%	10.5%	218,200	100.0%	7.3%

Source: U.S. Bureau of the Census, U.S. Census of Population: 1960 and 1970; General Social and Economic Characteristics: District of Columbia and Virginia.
 Washington Center for Metropolitan Studies, Trends Alert, 1975.

PLACE OF WORK OF EMPLOYED FAIRFAX COUNTY RESIDENTS

Fairfax County, 1970 and 1980

Place of Employment	1970		1980	
	Number	Percent	Number	Percent
Northern Virginia	116,775	63.2%	206,200	66.7%
Fairfax County	62,816	34.0	130,200	42.1
Arlington County	29,023	15.7	36,200	11.7
Prince William County	1,082	0.6	4,600	1.5
Loudoun County	1,084	0.6	900	0.3
Alexandria City	13,710	7.4	23,500	7.6
Fairfax City	5,168	2.8	3,400	1.1
Falls Church City	3,892	2.1	7,400	2.4
Maryland	9,921	5.4	17,000	5.5
District of Columbia	45,602	24.7	82,200	26.6
Elsewhere	3,953	2.1	3,700	1.2
Not Reported	8,518	4.6	0	0.0
Total	184,769	100.0%	309,100	100.0%

Sources: 1970 - U.S. Bureau of the Census.
 1980 - Fairfax County Office of Research and Statistics,
 1980 Household Survey.

DISTRIBUTION OF FEDERAL CIVILIAN EMPLOYMENT

BY JURISDICTION (PLACE OF WORK)

Washington SMSA, 1975, 1977, 1978, 1979, and 1980

IV-7

Jurisdiction	1975	1977	1978	1979	1980	Percent Change 1975 to 1980
Fairfax County, Virginia	14,410	13,745	13,957	13,761	13,894	-3.5%
Arlington County, Virginia	36,125	36,942	36,738	37,032	36,973	2.3
Prince William County, Virginia	1,998	1,975	1,837	1,873	1,700	-14.9
Loudoun County, Virginia	1,504	1,616	1,784	1,509	1,638	8.9
Alexandria City, Virginia	9,804	9,854	9,646	9,785	10,018	2.1
Fairfax City, Virginia	421	522	513	572	411	-2.3
Falls Church City, Virginia	699	771	776	684	691	-1.1
Manassas City, Virginia	NA*	44	60	85	94	—
Montgomery County, Maryland	41,167	40,551	41,417	42,013	43,977	6.8
Prince George's County, Maryland	23,034	23,562	24,333	24,230	24,611	6.8
Charles County, Maryland	2,387	2,459	2,459	2,494	2,527	5.8
District of Columbia	203,831	204,720	208,051	207,528	209,583	2.8
Total Washington SMSA	335,380	336,761	341,571	341,566	346,117	3.2%

*Not Available

Source: Federal Civilian Employment by Geographic Area, Office of Work Force Information, U.S. Office of Personnel Management.

FEDERAL CIVILIAN EMPLOYMENT
WITHIN FAIRFAX COUNTY BY AGENCY
1980*

Agency	Federal Civilian Employment	Percent of Total
Postal Service	2,559	18.4%
Army	5,676	40.9
Navy	212	1.5
Air Force	46	0.3
Other Defense	521	3.8
Agriculture	10	0.1
Health and Human Services	40	0.3
Treasury	131	0.9
Interior	3,124	22.5
Transportation	271	2.0
Justice	228	1.6
Commerce	471	3.4
State	51	0.4
General Services	493	3.5
Legislative Branch	28	0.2
All Other	33	0.2
Total All Agencies	13,894	100.0%

*Data as of December 31, 1980.

Source: Federal Civilian Employment by Geographic Area, Office of Work Force Information, U.S. Office of Personnel Management.

EMPLOYMENT STATUS BY SEX

Fairfax County, 1980

Employment Status	Female	Male
Employed Full-Time	41.9%	75.0%
Employed Part-Time	15.0	6.1
Not Employed	40.6	16.7
Unemployed but Seeking Work	<u>2.5</u>	<u>2.2</u>
Total	100.0%	100.0%

Source: Fairfax County Office of Research and Statistics, 1980 Household Survey.

LABOR FORCE PARTICIPATION BY SEX

Fairfax County, 1950 to 1980

Year	Female		Male	
	Number	Percent	Number	Percent
1950	8,665	28.2%	31,529	82.9%
1960	25,908	32.5	72,118	84.3
1970	65,247	43.4	126,911	85.7
1980	141,300	59.4	186,400	83.4

Sources: 1950 to 1970 - U.S. Bureau of the Census.
1980 - Fairfax County Office of Research and Statistics,
1980 Household Survey.

AVERAGE ANNUAL UNEMPLOYMENT RATES* BY AREA

1970 to 1981

Area	1970	1971	1972	1973	1974	1975	1976	1977	1978	1979	1980	1981
Fairfax County	2.3	2.2	2.5	3.4	3.7	5.0	4.6	3.6	3.4	3.0	2.8	3.2
Northern Virginia	2.3	2.2	2.5	3.5	3.8	5.0	4.6	3.4	3.7	3.3	3.1	3.7
State of Virginia	3.7	3.6	3.6	3.6	4.5	6.6	5.5	5.5	5.4	4.7	5.1	5.0
United States	4.9	5.9	5.6	4.9	5.6	8.5	7.7	7.1	6.0	5.8	6.8	7.6

*Adjusted for seasonal labor force changes.

Source: Virginia Employment Commission, Labor Market Trends and Special Monthly Report.

UNEMPLOYMENT RATES BY MONTH

Fairfax County, 1981

Month	Civilian Labor Force*	Unemployment	Rate
January	299,247	8,437	2.8%
February	300,160	7,834	2.6
March	303,450	8,085	2.7
April	304,919	8,432	2.8
May	305,559	9,318	3.0
June	310,956	11,887	3.8
July	310,905	10,778	3.5
August	307,350	10,164	3.3
September	304,060	10,776	3.5
October	305,362	10,171	3.3
November	307,728	10,870	3.5
December	309,164	10,482	3.4
Average	305,738	9,770	3.2%

*Excludes seasonal labor force.

Source: Virginia Employment Commission, Labor Force Estimates.

V INCOME

FAMILY INCOME DISTRIBUTION
Fairfax County, 1969 - 1976 - 1978

Income Level	1969		1976		1978	
	Number	Percent	Number	Percent	Number	Percent
Under \$5,000	7,108	6.3%	1,000	0.7%	1,300	0.8%
\$ 5,000 - 9,999	18,283	16.0	5,000	3.5	3,200	2.0
\$10,000 - 14,999	28,580	25.0	11,500	8.0	9,700	6.0
\$15,000 - 24,999	43,399	38.0	37,700	26.1	32,600	20.3
\$25,000 - 49,999	15,395	13.5	71,700	49.7	87,900	54.7
\$50,000 or more	<u>1,317</u>	<u>1.2</u>	<u>13,700</u>	<u>9.5</u>	<u>26,000</u>	<u>16.2</u>
Total	114,082	100.0%	144,300*	100.0%*	160,700	100.0%
Median Income	\$15,707		\$28,500		\$33,200	

*The total figure includes 3,700 (2.5%) nonrespondents.

Sources: 1969 - U.S. Bureau of the Census.
1976 - Fairfax County Office of Research and Statistics,
1977 Demographic Survey.
1978 - Fairfax County Office of Research and Statistics,
1980 Household Survey.

FAMILY INCOME DISTRIBUTION*
BY PLACE OF EMPLOYMENT OF FAMILY HEAD

Fairfax County, 1977

Income Level	<u>Commuters Out of Fairfax County</u>		<u>Living and Working Within Fairfax County</u>	
	Number	Percent	Number	Percent
Under \$5,000	200	0.1%	500	0.9%
\$ 5,000 - 9,999	2,800	1.7	2,500	4.2
\$10,000 - 14,999	10,700	6.4	6,300	10.5
\$15,000 - 24,999	42,300	25.2	17,600	29.3
\$25,000 - 34,999	55,100	32.9	15,500	25.9
\$35,000 - 49,999	38,900	23.2	11,500	19.3
\$50,000 or More	<u>17,600</u>	<u>10.5</u>	<u>5,900</u>	<u>9.9</u>
Total	167,600	100.0%	59,800	100.0%
Median Income	\$30,000		\$26,900	

*Data represent money income earned by families during 1976.

Source: Fairfax County Office of Research and Statistics, 1977 Demographic Survey.

HOUSEHOLD INCOME DISTRIBUTION

Fairfax County, 1978

<u>Income Level</u>	<u>Number</u>	<u>Percent</u>
Under \$5,000	2,662	1.3%
\$ 5,000 - 9,999	5,939	2.9
\$10,000 - 14,999	19,661	9.6
\$15,000 - 24,999	48,538	23.7
\$25,000 - 49,999	101,171	49.4
\$50,000 or More	<u>26,829</u>	<u>13.1</u>
Total	204,800	100.0%

Source: Fairfax County Office of Research and Statistics,
1980 Household Survey.

HOUSEHOLD INCOME BY SEX OF HOUSEHOLDER

Fairfax County, 1978

Income Level	Percentage of Households	
	Female Householder	Male Householder
Under \$5,000	4.7%	0.4%
\$ 5,000 - 9,999	7.9	1.8
\$10,000 - 11,999	12.0	2.0
\$12,000 - 14,999	15.7	3.4
\$15,000 - 19,999	23.6	7.6
\$20,000 - 24,999	14.9	12.6
\$25,000 - 29,999	11.1	13.5
\$30,000 - 39,999	7.1	26.0
\$40,000 - 49,999	1.5	16.8
\$50,000 - 64,999	0.6	10.5
\$65,000 or More	<u>0.9</u>	<u>5.4</u>
Total	100.0%	100.0%
Median Income	\$17,000	\$33,400

Source: Fairfax County Office of Research and Statistics, 1980 Household Survey.

MEDIAN FAMILY INCOME BY PLANNING DISTRICT

Fairfax County, 1969 and 1981

Planning District	Median Family Income	
	<u>1969</u>	<u>1981</u>
Annandale	\$17,534	\$43,100
Baileys	14,748	38,500
Bull Run	15,250	39,000
Fairfax	17,169	44,400
Jefferson	14,334	31,200
Lincolnia	14,271	33,300
Lower Potomac	8,756	29,100
McLean	18,791	53,600
Mount Vernon	14,305	35,600
Pohick*	15,828	45,000
Rose Hill	14,102	37,800
Springfield	16,835	42,400
Upper Potomac**	15,915	41,500
Vienna***	16,812	43,300
County Median	\$15,707	\$41,600

*Includes the Town of Clifton.

**Includes the Town of Herndon.

***Includes the Town of Vienna.

Source: U.S. Bureau of the Census, U.S. Census of Population and Housing: 1970, Census Tracts, PHC(1)-226.
Fairfax County Office of Research and Statistics,
1982 Household Survey.

EFFECTIVE BUYING INCOME*

Washington SMSA, 1980 and 1985

Jurisdiction	Total Effective Buying Income			Average Household Effective Buying Income		
	1980	1985	Percent Change	1980	1985	Percent Change
Fairfax County, Virginia	\$ 7,601,592	\$13,705,671	80.3%	\$35,732	\$53,601	50.0%
Arlington County, Virginia	2,159,521	3,189,612	47.7	30,112	45,828	52.2
Prince William County, Virginia	1,340,324	2,073,481	54.7	29,849	38,046	27.5
Loudoun County, Virginia	529,999	1,091,268	105.9	27,315	44,908	64.4
Alexandria City, Virginia	1,349,704	1,749,217	29.6	27,332	35,054	28.3
Fairfax City, Virginia	249,575	367,874	47.4	36,172	54,907	51.8
Falls Church City, Virginia	128,710	227,173	76.5	29,934	50,483	68.6
Manassas City, Virginia	173,498	331,208	90.9	32,743	48,707	48.8
Manassas Park City, Virginia	52,190	77,032	47.6	27,467	35,015	27.5
Montgomery County, Maryland	6,814,205	11,277,509	65.5	32,189	47,625	48.0
Prince George's County, Maryland	6,006,777	9,304,498	54.9	26,434	38,785	46.7
Charles County, Maryland	578,222	1,099,200	90.1	26,042	39,540	51.8
District of Columbia	6,501,414	11,917,091	83.3	25,824	49,904	93.2
Total SMSA	\$33,485,731	\$56,410,834	68.4%	\$29,648	\$46,333	56.3%

*Represents income earned during the years shown.

Source: Sales and Marketing Management, and 1981 Survey of Buying Power, Part II, October 1981.

TOTAL PERSONAL INCOME (MILLIONS OF DOLLARS) BY JURISDICTION

Washington SMSA, 1975 - 1980

Jurisdiction	Year					
	1975	1976	1977	1978	1979	1980
Fairfax County, Virginia	\$4,155.6	\$4,718.0	\$5,377.0	\$5,985.4	\$6,688.6	\$8,021.2
Arlington County, Virginia	1,662.6	1,858.9	2,007.6	2,175.7	2,403.6	2,707.0
Prince William County, Virginia	839.6	794.5	888.1	1,020.2	1,148.6	1,377.8
Loudoun County, Virginia	335.9	386.8	430.2	487.7	552.3	652.7
Alexandria City, Virginia	979.2	1,065.8	1,161.8	1,287.3	1,401.0	1,650.7
Fairfax City, Virginia	178.3	199.4	216.8	234.4	258.8	307.7
Falls Church City, Virginia*	124.7	141.3	117.5	129.0	141.9	172.6
Manassas City, Virginia	---	96.3	115.6	130.9	151.3	188.6
Manassas Park City, Virginia	---	44.6	51.0	58.5	66.3	59.5
Montgomery County, Maryland	5,240.6	5,852.4	6,309.0	7,076.5	7,752.0	9,082.0
Prince George's County, Maryland	4,410.4	4,814.4	5,117.5	5,645.8	6,118.3	6,933.0
Charles County, Maryland	326.2	375.2	422.9	484.0	543.0	634.0
District of Columbia	5,188.7	5,577.9	5,938.2	6,319.8	6,852.3	7,706.0

*The estimates for Falls Church City were overstated for years prior to 1977 due to geographic coding errors.

Source: Bureau of Economic Analysis, U.S. Department of Commerce.

PER CAPITA PERSONAL INCOME BY AREA

1970 to 1980

Year	Fairfax County	Northern Virginia	Washington SMSA	Virginia
1970	\$ 4,975	\$ 5,116	\$ 4,909	\$3,677
1971	5,570	5,663	5,337	3,973
1972	5,854	6,122	5,822	4,386
1973	6,554	6,759	6,404	4,848
1974	7,254	7,480	7,065	5,339
1975	8,084	8,254	7,745	5,770
1976	8,895	9,107	8,547	6,333
1977	10,080	10,060	9,335	6,955
1978	10,858	11,058	10,254	7,666
1979	12,127	12,024	11,493	8,438
1980	13,403	13,657	12,871	9,406

Source: Tayloe Murphy Institute, Personal Income Estimates for Virginia Counties and Cities, 1973 to 1978, May 1980.
Bureau of Economic Analysis, U.S. Department of Commerce.

PER CAPITA PERSONAL INCOME BY JURISDICTION

Washington SMSA, 1975 - 1980

Jurisdiction	Year					
	1975	1976	1977	1978	1979	1980
Fairfax County, Virginia	\$ 8,084	\$ 8,895	\$10,080	\$10,858	\$12,127	\$13,403
Arlington County, Virginia	10,788	11,923	13,154	14,424	15,626	17,690
Prince William County, Virginia	5,717	6,252	6,825	7,476	8,531	9,500
Loudoun County, Virginia	6,879	7,643	8,307	9,145	10,052	11,340
Alexandria City, Virginia	9,166	10,060	11,144	12,397	14,189	15,955
Fairfax City, Virginia	8,100	9,198	10,325	11,282	14,324	15,831
Falls Church City, Virginia*	12,454	14,781	12,541	13,773	16,652	18,103
Manassas City, Virginia	---	7,968	8,977	9,966	11,017	12,190
Manassas Park City, Virginia	---	5,231	5,922	6,556	8,033	9,099
Montgomery County, Maryland	9,161	10,215	11,018	12,304	13,541	15,641
Prince George's County, Maryland	6,485	7,123	7,645	8,490	9,287	10,400
Charles County, Maryland	5,401	6,003	6,516	7,157	7,758	8,691
District of Columbia	7,292	7,967	8,670	9,418	10,452	12,050
Washington SMSA	7,745	8,547	9,335	10,254	11,493	12,871

*The estimates for Falls Church City were overstated for years prior to 1977 due to geographic coding errors.

Source: Bureau of Economic Analysis, U.S. Department of Commerce.

ADJUSTED GROSS INCOME* ON ALL TAX RETURNS BY JURISDICTION

Tax Year 1980

Jurisdiction	Total Returns**	Median AGI Per Return	Average AGI Per Return
Fairfax County	245,314	\$19,807	\$25,458
Arlington County	76,152	17,153	23,036
Prince William County	49,935	18,879	21,499
Loudoun County	22,802	17,751	22,590
Alexandria City	60,161	16,160	21,717
Fairfax City	7,359	17,168	22,103
Falls Church City	8,577	15,228	21,312
Manassas City	7,312	17,368	20,581
Manassas Park City	1,926	15,000	16,073

*Data represent adjusted gross income earned during 1980.

**The number of returns is adjusted by counting two married separate returns as equivalent to one married joint or combined return.

Source: Tayloe Murphy Institute, Distribution of Virginia Adjusted Gross Income by Income Class, 1980.

ADJUSTED GROSS INCOME* ON INDIVIDUAL TAX RETURNS BY JURISDICTION

Tax Year 1980

Jurisdiction	Individual Returns **	Median AGI Per Return	Average AGI Per Return
Fairfax County	121,087	\$ 9,339	\$12,113
Arlington County	49,207	13,073	15,440
Prince William County	20,583	7,523	9,603
Loudoun County	9,868	8,149	10,748
Alexandria City	39,950	12,668	14,764
Fairfax City	3,841	8,511	10,691
Falls Church City	5,058	10,039	12,915
Manassas City	3,251	8,140	10,063
Manassas Park City	860	7,442	8,677

*Data represent adjusted gross income earned during 1980.

**Data include only returns filed by persons who are single, divorced, separated or widowed.

Source: Tayloe Murphy Institute, Distribution of Virginia Adjusted Gross Income by Income Class, 1980.

ADJUSTED GROSS INCOME* ON MARRIED TAX RETURNS BY JURISDICTION

Tax Year 1980

Jurisdiction	Married Returns**	Median AGI Per Return	Average AGI Per Return
Fairfax County	124,227	\$35,630	\$38,466
Arlington County	26,945	31,045	36,908
Prince William County	29,352	28,624	29,840
Loudoun County	12,934	31,600	28,412
Alexandria City	20,211	35,461	28,992
Fairfax City	3,518	34,564	31,995
Falls Church City	3,519	33,382	28,460
Manassas City	4,061	26,863	29,002
Manassas Park City	1,066	22,038	22,039

*Data represent adjusted gross income earned during 1980.

**Data include only returns filed by persons having a married marital status.

Source: Tayloe Murphy Institute, Distribution of Virginia Adjusted Gross Income by Income Class, 1980.

NUMBER OF WAGE EARNERS* IN HOUSEHOLD BY HOUSEHOLD INCOME**

Fairfax County, 1977

Numbers of Earners	<u>Household Income</u>				
	<u>Under \$15,000</u>	<u>\$15,000- 24,999</u>	<u>\$25,000- 34,999</u>	<u>\$35,000- 49,999</u>	<u>\$50,000- or More</u>
One	76.5%	56.2%	55.2%	39.5%	32.7%
Two	21.6	41.3	42.0	55.2	56.1
Three or More	1.9	2.5	2.8	5.3	11.2
Total	100.0%	100.0%	100.0%	100.0%	100.0%

*Includes those persons twenty-one years of age or older.

**Data represents money income earned by households during 1976.

Source: Fairfax County Office of Research and Statistics, 1977 Demographic Survey of Fairfax County, October 1977.

EARNINGS OF WORKERS*

COMMUTING INTO AND OUT OF FAIRFAX COUNTY, 1970

Earnings of Workers	<u>Commuters Into Fairfax County</u>		<u>Commuters Out of Fairfax County</u>		<u>Living and Working Within Fairfax County</u>	
	Number	Percent	Number	Percent	Number	Percent
Under \$1,000	1,178	3.9%	3,401	3.2%	7,539	12.9%
\$ 1,000 - 2,999	2,774	9.2	7,073	6.8	11,123	19.1
\$ 3,000 - 4,999	3,546	11.8	8,736	8.3	8,362	14.3
\$ 5,000 - 6,999	5,433	18.1	11,951	11.5	7,844	13.4
\$ 7,000 - 9,999	7,697	25.7	18,565	17.7	9,380	16.1
\$10,000 - 14,999	6,091	20.3	23,797	22.7	7,869	13.5
\$15,000 - 24,999	2,696	9.0	25,930	24.7	5,018	8.6
\$25,000 or More	586	2.0	5,373	5.1	1,242	2.1
Total	30,001	100.0%	104,826	100.0%	58,377	100.0%
Median	\$7,800		\$10,600		\$5,600	

*Data represent money income earned by workers during 1969.

Source: U.S. Bureau of the Census, U.S. Census of Population: 1970; Journey to Work, PC(2)-6D.

ESTIMATES OF URBAN FAMILY BUDGETS*

Washington SMSA, 1981

Consumption Components	Budget Levels		
	Lower	Intermediate	Higher
Total Budget	\$16,702	\$27,352	\$41,137
Family Consumption	12,709	18,866	25,809
Total Food	4,565	5,969	7,525
Food at Home	3,897	4,992	5,981
Food Away from Home	668	977	1,544
Total Housing	3,370	5,827	8,655
Shelter	2,665	4,577	6,019
Renter	2,665	3,186	4,605
Homeowner	N/A	5,041	6,268
Furnishings & Operations	705	1,250	2,290
Total Transportation	1,244	2,358	3,080
Automobile Owners	1,703	2,446	3,080
Clothing	947	1,359	2,034
Personal Care	401	566	839
Medical Care	1,461	1,467	1,525
Other Family Consumption	721	1,320	2,151
Other Items	640	1,043	1,758
Social Security and			
Disability Payments	110	1,819	1,975
Personal Income Taxes	2,243	5,624	11,595

*Budget levels represent the costs of three hypothetical lists of goods and services that were specified to portray three relative standards of living—described as lower, intermediate, and higher—and do not represent how families actually do or should spend their money. A "family" consists of an employed husband, age 38, a wife not employed outside the home, an 8-year old girl, and a 13-year old boy.

Source: U.S. Department of Labor, Bureau of Labor Statistics, News Release, April 16, 1982, "Autumn 1981 Urban Family Budgets and Comparative Indexes for Selected Urban Areas."

INDEXES OF COMPARATIVE COSTS FOR FAMILIES BY BUDGET LEVEL*

Washington SMSA, 1981

Consumption Components	Budget Levels		
	Lower	Intermediate	Higher
Total Budget	109	108	108
Total Consumption	105	103	103
Total Food	100	102	102
Food at Home	100	103	103
Total Housing	120	105	103
Renter	126	117	107
Homeowner	N/A	103	102
Total Transportation	95	99	100
Automobile Owners	98	98	N/A
Clothing	101	102	104
Personal Care	106	111	117
Medical Care	102	102	101
Other Family Consumption	112	110	109
Personal Income Taxes	141	127	124

*An index of 100 represents the United States urban average at each budget level. Deviation from this average denotes the difference in Washington area budget levels -- either higher or lower -- from the national average. For example, an index of 105 denotes that the cost for an item in the Washington SMSA is five percent higher than the national average, while an index of 95 denotes a budget level that is five percent lower than the national average.

A "family" consists of an employed husband, age 38, a wife not employed outside the home, 8-year old girl, and a 13-year old boy.

Source: U.S. Department of Labor, Bureau of Labor Statistics, News Release, April 16, 1982, "Autumn 1981 Urban Family Budgets and Comparative Indexes for Selected Urban Areas."

RELATIVE PRICE LEVEL INDEXES FOR CATEGORIES OF EXPENDITURES
IN EIGHT VIRGINIA METROPOLITAN AREAS

1981

(Average for All Areas = 100)

Consumption Component	Metropolitan Area							
	Northern Virginia	Charlottesville	Lynchburg	Newport News/Hampton	Norfolk/Virginia Beach/Portsmouth	Petersburg/Colonial Heights/Hopewell	Richmond	Roanoke
V-17 Food and Beverages	106	105	96	94	106	94	100	99
Housing	125	107	94	94	100	90	100	91
Apparel and Upkeep	118	99	100	94	97	92	104	96
Transportation	104	98	97	99	101	98	103	100
Other Goods and Services	110	101	97	99	100	93	102	98
Total Consumption	116	104	95	96	100	93	101	95

Source: Tayloe Murphy Institute, Consumer Price Indicators for Virginia Metropolitan Areas, 1981.

CONSUMER PRICE INDEX*

U.S. City and Washington SMSA Average

(1967 = 100)
1960 to 1981 (Unrevised)

Year	U.S. City		Washington SMSA	
	Consumer Price Index	Percent Increase	Consumer Price Index	Percent Increase
1960	88.7	--	87.7	--
1961	89.6	1.0%	89.0	1.5%
1962	90.6	1.1%	89.8	0.9%
1963	91.7	1.2%	91.3	1.7%
1964	92.9	1.3%	92.8	1.6%
1965	94.5	1.7%	94.1	1.4%
1966	97.2	2.9%	97.3	3.4%
1967	100.0	2.9%	100.0	2.8%
1968	104.2	4.2%	104.7	4.7%
1969	109.8	5.4%	111.2	6.2%
1970	116.3	5.9%	117.6	5.8%
1971	121.3	4.3%	122.7	4.3%
1972	125.3	4.3%	126.9	3.4%
1973	133.1	6.2%	135.0	6.4%
1974	147.7	11.0%	150.0	11.1%
1975	161.2	9.1%	161.6	7.7%
1976	170.5	5.8%	171.1	5.9%
1977	181.5	6.5%	183.0	7.0%
1978	195.4	7.7%	197.0	8.4%
1979	217.4	11.3%	218.6	10.2%
1980	246.8	13.5%	244.7	11.5%
1981	272.4	10.4%	267.3	9.2%

*Applies to all Urban Consumers.

Source: The Consumer Price Index, U.S. Bureau of Labor Statistics.

ESTIMATED WEIGHTED AVERAGE THRESHOLDS AT THE
POVERTY LEVEL IN 1981 BY SIZE OF FAMILY

Size of Family	Dollar Threshold
1 Person	\$ 4,620
Under 65 Years	4,730
65 Years and Over	4,360
2 Persons	5,920
Householder Under 65 Years	6,110
Householder 65 Years and Over	5,500
3 Persons	7,250
4 Persons	9,290
5 Persons	11,000
6 Persons	12,440
7 Persons	14,080
8 Persons	15,670
9 Persons or More	18,650

Source: U.S. Department of Commerce, Bureau of the Census.

VI RESIDENTIAL CHARACTERISTICS

TOTAL HOUSING UNITS
Fairfax County, 1950 - 1982

Year	Housing Units
1950*	26,558
1960	69,184
1970	130,787
1973	159,592
1974	167,541
1975	172,969
1976	177,176
1977	185,879
1978	192,776
1979	201,667
1980	215,739
1981	220,086
1982	223,853

*1950 housing count includes Fairfax City.

Sources: U.S. Bureau of the Census, U.S. Census of Housing, 1950, 1960, 1970, 1980; Office of Research and Statistics, 1973, 1974,, 1975, 1976, 1977, 1978, 1979, 1981, 1982.

DWELLING UNIT INVENTORY* BY PLANNING DISTRICT

Fairfax County, 1982

Planning District	Housing Type								Total Units
	Single Family	Duplex	Townhouse	Multiplex	Garden Apartments	Mid-Rise Apartments	Hi-Rise Apartments	Mobile Homes	
Annandale	15,448	19	2,537	256	4,626	514	471	---	23,871
Baileys	4,866	18	248	---	4,493	759	3,919	---	14,303
Bull Run	5,546	7	1,162	784	309	---	---	501	8,309
Fairfax	6,623	7	1,621	161	3,342	1	---	256	12,011
Jefferson	8,198	8	1,290	---	4,549	150	899	---	15,094
Lincolnia	1,394	11	857	---	1,882	173	---	---	4,317
Lower Potomac	1,281	13	611	291	521	---	---	---	2,717
McLean	14,599	8	965	200	2,200	553	1,731	---	20,256
Mount Vernon	14,241	1,702	1,461	1,437	8,472	---	2,510	1,553	31,376
Pohick**	17,840	296	8,007	475	323	---	---	---	26,941
Rose Hill	6,993	9	296	---	490	---	---	---	7,788
Springfield	7,313	---	2,674	24	1,571	2	---	---	11,584
Upper Potomac***	13,634	65	6,888	68	6,680	240	285	---	27,860
Vienna****	11,548	15	2,727	275	2,034	274	553	---	17,426
County Total	129,524	2,178	31,344	3,971	41,492	2,666	10,368	2,310	223,853

VI-2

*Figures exclude group quarters which are composed of Lorton Reformatory, Fort Belvoir, nursing homes, and religious quarters.

**Includes the Town of Clifton.

***Includes the Town of Herndon.

****Includes the Town of Vienna.

Source: Fairfax County Office of Research and Statistics, 1982 Standard Reports.

HOUSING UNITS AND VACANCY RATES

By Area Jurisdictions, 1980

Jurisdiction	Housing Units	Households	Vacant Housing Units	Vacancy Rate
Fairfax County	215,739	205,166	10,573	4.9%
Arlington County	75,182	71,615	3,567	4.7
Prince William County*	53,932	50,696	3,236	6.0
Loudoun County	19,742	18,653	1,089	5.5
Alexandria City	52,041	49,004	3,037	5.8
Fairfax City	7,050	6,881	169	2.4
Falls Church City	4,503	4,250	253	5.6
Montgomery County	216,221	207,195	9,026	4.2
Prince George's County	236,465	224,789	11,676	4.9
District of Columbia	<u>276,707</u>	<u>252,952</u>	<u>23,755</u>	8.6
Total	1,157,582	1,091,201	66,381	5.7%

*Includes the independent cities of Manassas and Manassas Park.

Source: 1980 U.S. Census.

OCCUPIED HOUSING UNITS BY TENURE: 1980

Jurisdiction	Total Occupied Units	Renter Occupied	Owner Occupied	Percent Owner Occupied
Fairfax County	205,166	66,257	138,909	67.7%
Arlington County	71,615	43,996	27,619	38.6
Prince William County*	50,696	14,592	37,554	74.1
Loudoun County	18,653	5,147	13,506	72.4
Alexandria City	49,004	31,126	17,878	36.5
Fairfax City	6,881	2,528	4,353	63.7
Falls Church City	4,250	1,980	2,270	53.4
Montgomery County	207,195	73,056	134,139	64.7
Prince George's County	224,789	101,689	123,100	54.8
District of Columbia	<u>253,143</u>	<u>163,297</u>	<u>89,846</u>	35.5
Region	1,091,392	503,668	589,174	54.0%

*Includes the independent cities of Manassas and Manassas Park.

Source: Census of Population and Housing, 1980: Summary Tape File 1A (D.C., Md., Va.) Bureau of the Census.

HOUSING CHARACTERISTICS, FAIRFAX COUNTY, 1960, 1970, and 1980

	1960		1970			1980		Percent Change 1970-1980
	Number	Percent	Number	Percent	Percent Change 1960-1970	Number	Percent	
<u>All Dwelling Units</u>	69,184		130,787		89%	215,739		65%
<u>All Occupied Units</u>	65,245	100.0%	126,516	100.0%	94	205,166	100.0%	62
Owner Occupied	49,933	76.5	81,532	64.4	63	138,909	67.7	70
Renter Occupied	15,312	23.5	44,984	35.6	194	66,257	32.2	47
<u>All Vacant Units</u>	3,939		4,271			10,573		
Vacancy Rate		5.6		3.2			4.9	
<u>Number of Persons</u>								
1-Person Household	2,537	3.9	9,972	7.9	293	35,002	17.1	251
2-Person Household	12,343	18.9	30,624	24.2	148	62,114	30.3	103
3-Person Household	13,091	20.1	25,915	20.5	98	41,535	20.2	60
4-Person Household	16,703	25.6	28,279	22.4	69	39,873	19.4	41
5-Person Household	11,137	17.1	17,401	13.8	56	17,461	8.5	0
6-or-More-Person Household	9,434	14.4	14,325	11.3	52	9,181	4.5	-36
<u>Median Number of Persons</u>								
All Occupied Units			3.4			2.63		
Owner Occupied	3.8		3.7					
Renter Occupied	3.6		2.7					

Sources: U.S. Bureau of the Census, U.S. Census of Housing, 1960, 1970, and 1980; 1960, Vol. I: States and Small Areas, Virginia, Final Report HC(1)-48; 1970, Detailed Housing Characteristics, Final Report HC(1)-B48, Virginia.

HOUSING UNITS SOLD BY STRUCTURE TYPES

Fairfax County, 1977 to 1981

Type of Unit	Housing Units Sold				
	1977	1978	1979	1980	1981
Single-Family Detached	11,672	12,491	12,683	9,366	7,408
Townhouse ¹	5,322	6,234	6,882	5,694	4,909
Condominium Apartment ²	1,444	2,537	2,471	2,423	1,705
Total	18,438	21,262	22,036	17,483	14,022

¹Includes duplexes, townhouses, townhouse condominiums, and multiplex condominiums.

²Includes garden apartment condominiums, high-rise condominiums without commercial space, and high-rise condominiums with commercial space.

Source: Fairfax County Office of Assessments, Assessment/Sales Ratio Report.

AVERAGE SALES PRICE OF HOUSING UNITS SOLD

Fairfax County, 1977 to 1981

Type of Unit	Average Sales Price				
	1977	1978	1979	1980	1981
Single-Family Detached	\$78,220	\$86,190	\$101,005	\$114,530	\$125,731
Townhouse ¹	54,706	59,082	66,270	77,237	85,200
Condominium Apartment ²	41,007	44,782	44,160	55,457	62,300
Total	\$68,521	\$73,302	\$ 83,783	\$ 94,195	\$103,835

¹Includes duplexes, townhouses, townhouse condominiums, and multiplex condominiums.

²Includes garden apartment condominiums, high-rise condominiums without commercial space, and high-rise condominiums with some commercial space.

Source: Fairfax County Office of Assessments, Assessment/Sales Ratio Report.

HOUSING VALUE
Fairfax County, 1950, 1960, and 1970

Value	1950*	1960**	1970***
Less than \$5,000	1,299	783	149
\$5,000 to \$9,999	2,483	1,989	425
\$10,000 to \$14,000	4,967	9,659	1,071
\$15,000 to \$19,999	1,577	14,785	4,838
\$20,000 to \$24,999	1,407	10,027	8,433
\$25,000 to \$34,999		6,922	23,239
\$35,000 or More		2,696	39,488
Total			
Owner-Occupied	11,733	46,861	77,643
Median	\$12,048	\$18,700	\$35,300

*1950 data are for owner-occupied, one-family dwellings only. Value category \$20,000 to \$24,999 includes all one-family dwellings valued at \$20,000 or more.

**1960 data use value categories \$5,000 to \$9,900 rather than \$5,000 to \$9,999.

***1970 data are for single-family dwellings only on less than 10 acres and with no business attached.

Source: U.S. Bureau of the Census, U.S. Census of Housing, 1950, 1960, 1970. 1950, Vol. I: General Characteristics, Chapter 46, Virginia H-A46; 1960, Vol. I: States and Small Areas, Virginia, Final Report HC(1); 1970, Detailed Housing Characteristics, Final Report HC(1)-B48, Virginia.

ESTIMATED MEDIAN AND AVERAGE HOUSING VALUE OF OWNED UNITS

BY HOUSING TYPE AND PLANNING DISTRICT

Fairfax County, 1982

Planning District	Median Value				Average Value			
	Single Family	Town-house	Condo-minium	Total	Single Family	Town-house	Condo-minium	Total
Annandale	\$110,800	\$102,100	\$41,500	\$106,700	\$116,724	\$ 99,958	\$50,683	\$108,828
Bailey's	115,600	114,900	80,800	107,000	130,341	114,781	86,190	116,189
Bull Run	98,800	67,400	—	91,600	101,685	66,397	—	92,352
Fairfax	132,100	89,600	60,800	119,400	139,306	97,461	62,379	124,709
Jefferson	89,900	97,400	55,800	87,500	96,841	106,871	54,921	91,902
Lincolnia	95,500	99,300	54,500	93,100	103,009	99,951	55,594	97,598
Lower Potomac	84,500	68,400	—	77,500	95,231	67,723	—	83,421
McLean	137,600	139,700	95,100	133,700	160,138	144,950	98,143	151,527
Mount Vernon	116,900	67,600	51,600	96,500	121,099	75,740	50,636	103,716
Pohick*	122,100	88,300	62,600	111,600	126,477	88,560	63,672	113,859
Rose Hill	94,500	107,600	—	95,300	98,485	105,933	—	98,791
Springfield	98,600	87,900	50,600	93,800	104,835	91,004	51,245	97,803
Upper Potomac**	127,500	81,900	42,800	99,000	138,317	85,968	48,270	113,508
Vienna***	115,900	96,900	54,200	109,600	120,808	100,483	55,430	116,509
Total County	\$114,500	\$ 87,100	\$57,200	\$104,100	\$123,825	\$ 89,617	\$64,877	\$112,454

*Includes the Town of Clifton.

**Includes the Town of Herndon.

***Includes the Town of Vienna.

Source: Fairfax County Office of Research and Statistics.

ESTIMATED MEDIAN VALUE OF

OWNED HOUSING UNITS

Fairfax County, 1973 to 1982

Year	Median Estimated Value	Percent Change
1973	\$ 53,000	--
1974	55,000	3.8%
1975	59,100	7.5
1976	62,600	5.9
1977	64,600	3.2
1978	68,200	5.6
1979	75,200	10.3
1980	87,200	16.0
1981	97,700	12.0
1982	104,100	6.6

Source: Fairfax County Office of Research and Statistics.

VALUE OF OWNER-OCCUPIED NONCONDOMINIUM HOUSING UNITS

Fairfax County, 1980

Value	Number of Units	Percent
Less than \$20,000	295	0.3%
\$20,000 to \$29,999	313	0.3
\$30,000 to \$39,999	598	0.5
\$40,000 to \$49,999	1,765	1.5
\$50,000 to \$79,999	31,394	26.5
\$80,000 to \$99,999	32,590	27.5
\$100,000 to \$199,999	46,876	39.6
\$200,000 or More	<u>4,526</u>	<u>3.8</u>
Total	118,357	100.0%
Median Value*	\$95,200	

*Median Value for Noncondominium Housing Units.

Source: 1980 Census data provided by Metropolitan
Washington Council of Governments.

RESIDENTIAL CONSTRUCTION ACTIVITY

Fairfax County, January 1982

Stage in Development Process	Number of Units	Percent of Proposed Units
Under Construction	3,818	5.8%
Building Permit Issued, but Not Started	3,777	5.7
Site Plan Approved	15,292	23.2
Site Plan Submitted	26,327	39.9
Rezoning Granted	5,604	8.5
Rezoning Pending	11,146	16.9
Total Construction Activity	65,964	100.0%

Source: Fairfax County Office of Research and Statistics,
1982 Standard Reports.

NUMBER OF NEW HOUSING UNITS AUTHORIZED BY BUILDING PERMITS

Washington SMSA,* 1975 to 1981

Jurisdiction	Calendar Year						
	1975	1976	1977	1978	1979	1980	1981
Fairfax County*	3,251	5,996	10,015	8,361	8,345	6,563	4,772
Arlington County	189	418	985	722	656	563	595
Prince William County**	800	1,724	2,294	2,997	2,155	1,643	1,507
Loudoun County	224	492	904	743	463	342	378
Alexandria City	987	682	544	635	330	568	311
Montgomery County***	1,715	3,460	3,797	4,565	4,588	5,683	4,031
Prince George's County	1,453	2,049	3,260	2,237	2,459	1,706	1,835
District of Columbia	436	1,968	2,194	2,173	1,840	2,642	649
Washington SMSA	9,055	16,789	23,993	22,433	20,836	19,710	14,078

*Includes the cities of Fairfax and Falls Church.

**Includes the cities of Manassas and Manassas Park.

***Includes the cities of Rockville and Gaithersburg.

Source: Department of Human Resources and Public Safety, Metropolitan Washington Council of Governments.

RESIDENTIAL CONSTRUCTION ACTIVITY
UNITS AUTHORIZED BY BUILDING PERMITS*
Fairfax County, FY1971 to FY1982

Fiscal Year	Single-Family Units**		Multi-Family Units	
	Number	Estimated Cost	Number	Estimated Cost
1971	6,566	\$129,667,400	3,867	\$47,926,437
1972	8,827	174,307,591	5,573	59,425,057
1973	10,681	220,439,663	5,023	67,364,858
1974	5,882	156,686,570	2,618	35,101,602
1975	1,499	51,750,866	1,501	13,706,368
1976	3,976	131,156,696	304	3,703,000
1977	6,496	230,553,667	2,404	41,638,500
1978	8,044	305,602,696	813	12,994,364
1979	7,709	306,262,619	1,486	47,735,939
1980	6,356	277,379,509	535	13,144,930
1981	6,947	243,625,976	700	23,348,603
1982	4,168	182,374,344	579	10,673,000

*Applies to permits issued for new construction.

**The single-family category includes single-family, duplex, townhouse, and multiplex housing units. The multi-family category includes garden and elevator apartment units.

Source: Fairfax County Department of Environmental Management, Division of Inspection Services.

CONDOMINIUM CONVERSIONS AS PERCENTAGE OF TOTAL
CONDOMINIUM HOUSING INVENTORY BY JURISDICTION
Washington Metropolitan Region, 1981

Jurisdiction	Total Condominium Units	Number of Converted Units	Converted Units as Percentage of All Condominium Units
Fairfax County	21,485	8,144	37.9%
Arlington County	9,705	7,241	74.6
Prince William County	1,423	86	6.0
Loudoun County	1,614	418	25.9
Alexandria City	9,659	4,913	50.9
Fairfax City	480	480	100.0
Falls Church City	234	200	85.5
Montgomery County*	20,798	12,476	59.9
Prince George's County	11,348	6,920	61.0
District of Columbia	<u>18,243</u>	<u>14,045</u>	77.0
Total Region	94,989	54,923	57.8

*Includes cities of Rockville and Gaithersburg.

Source: Metropolitan Washington Council of Governments, Department of Human Resources and Public Safety, Condominium Housing in the Washington Metropolitan Area, July 1981, July 1981.

RENTAL HOUSING UNIT VACANCY RATES BY JURISDICTION

Suburban Metropolitan Washington Region, 1979

Jurisdiction	Number of Units		Percent of Surveyed Units Vacant
	Surveyed	Vacant	
Fairfax County	43,364	1,827	4.12%
Arlington County	23,974	328	1.37
Prince William County	4,744	267	5.63
Loudoun County	1,148	12	1.05
Alexandria City	16,221	533	3.29
Fairfax City	1,515	55	3.63
Falls Church City	773	16	2.07
Montgomery County	50,225	1,670	3.33
Prince George's County	53,327	2,464	4.62
Total Suburban Region	195,291*	7,172	3.67%

*Figures include only those units located in major rental housing projects having four or more units whose managements responded to a survey conducted by the Metropolitan Washington Council of Governments.

Source: Department of Human Resources, Metropolitan Washington Council of Governments.

MONTHLY GROSS RENT CHARACTERISTICS

Fairfax County 1970 and 1980

Monthly Gross Rent	<u>Renter Occupied Dwellings</u>	
	1970	1980
Less than \$99	2,512	1,044
\$100 to \$149	13,837	897
\$150 to \$199	17,151	1,837
\$200 to \$249	4,446	4,597
\$250 or More	4,212	---
\$250 to \$299*	---	11,888
\$300 to \$399*	---	29,418
\$400 to \$499*	---	10,108
\$500 or More*	---	3,038
Rent Free or Not Reported	<u>2,547</u>	<u>1,286</u>
Total Renter Occupied Dwellings	44,705	64,113
<u>Median Contract Rent</u>	\$164	\$338

*Table expanded in 1982 to account for number of units with higher monthly gross rents.

Source: U.S. Bureau of the Census, Census Tracts Washington, D.C. - Maryland-Virginia, 1970, and 1980 Census data provided by Metropolitan Washington Council of Governments.

AVERAGE MONTHLY RENT OF RENTAL HOUSING UNITS*

BY PLANNING DISTRICTS

Fairfax County, 1977 to 1982

Planning District	Average Monthly Rent					
	1977	1978	1979	1980	1981	1982
Annandale	\$281	\$295	\$341	\$377	\$410	\$459
Baileys	253	268	293	320	356	391
Bull Run	265	271	304	320	348	396
Fairfax	285	308	338	362	411	457
Jefferson	252	265	297	319	353	386
Lincolnia	290	306	334	366	396	449
Lower Potomac	223	266	266	291	328	341
McLean	307	321	343	367	411	462
Mount Vernon	253	267	295	316	344	368
Pohick ¹	---	---	378	411	451	505
Rose Hill	226	230	266	287	324	383
Springfield	275	297	302	330	376	406
Upper Potomac ²	280	295	319	330	359	393
Vienna ³	270	278	314	336	357	403
County Total	\$266	\$281	\$310	\$334	\$367	\$403

*Figures include only those units located in major rental housing projects having five or more units.

¹Includes the Town of Clifton.

²Includes the Town of Herndon.

³Includes the Town of Vienna.

Source: Fairfax County Office of Research and Statistics.

RENT-INCOME RATIO BY AGE OF HOUSEHOLD HEAD

Fairfax County, 1975

Rent/Income Ratio	Age of Head					
	14-24	25-34	35-44	45-54	55-64	65+
0 - 24.9%	51.9	55.9	72.7	61.2	75.6	20.1
25 - 34.9%	22.1	27.3	12.6	28.9	19.0	8.0
35% or More	26.0	16.8	14.7	9.9	5.4	71.9
Total	100.0	100.0	100.0	100.0	100.0	100.0

Source: Washington Center for Metropolitan Studies, 1975.

RENT-INCOME RATIO BY HOUSEHOLD INCOME LEVEL

Fairfax County, 1975

Rent/Income Ratio	Income Level					
	\$ 0 3,999	\$ 4,000- 7,999	\$ 8,000- 9,999	\$10,000- 14,999	\$15,000- 24,999	25,000+
0 - 24.9%	6.9	5.2	35.1	73.8	95.4	96.3
25 - 34.9%	0	37.5	50.7	20.9	4.6	3.7
35% or More	93.1	57.3	14.2	5.3	0	0
Total	100.0	100.0	100.0	100.0	100.0	100.0

Source: Washington Center for Metropolitan Studies, 1975.

RENTAL UNITS AVAILABLE BY AREA JURISDICTION

1970 and 1980

Jurisdiction	Rental Units Available*		Change 1970 to 1980	
	1970	1980	Number	Percent
Fairfax County	46,939	65,587	18,648	40.4%
Arlington County	47,258	45,558	-1,700	-3.6
Prince William County**	9,882	15,849	5,967	60.4
Loudoun County	3,675	5,374	1,699	46.2
Alexandria City	32,843	32,733	-110	-0.3
Fairfax City	2,557	2,595	38	1.5
Falls Church City	1,873	2,151	278	14.8
Montgomery County	62,610	76,892	14,282	22.8
Prince George's County	101,172	108,093	6,921	6.8
District of Columbia	<u>199,028</u>	<u>173,506</u>	<u>-25,522</u>	-12.8
Region	507,837	528,338	20,501	4.0%

*Rental Units Available is the sum of renter occupied units plus vacant year-round units for rent.

**Includes the independent cities of Manassas and Manassas Park.

Sources: Department of Human Resources and Public Safety, Metropolitan Washington Council of Governments.
 Derived from U.S. Bureau of the Census, Census of Population and Housing: 1970; Census Tracts. Final Report PHC(1)-226, Washington, D.C.-Maryland - Virginia SMSA and Census of Population and Housing, 1980: Summary Tape File 1A (D.C., Md., Va.).

RENTAL HOUSING UNIT VACANCY RATE

Fairfax County, 1974 to 1982

Year	Vacancy Rate
1974	3.6%
1975	4.4
1976	3.5
1977	3.9
1978	4.1
1979	4.1
1980	4.1
1981	2.6
1982	2.6

Source: Fairfax County Office of Research and Statistics, 1982 Rental Housing Survey.

RENTAL HOUSING UNIT VACANCY RATES

BY STRUCTURE TYPES

Fairfax County, 1982

Structure Type*	Number of Units**	Number of Vacancies	Vacancy Rate
Garden Apartment	32,294	912	2.8%
Elevator Apartment	7,054	145	2.1
Townhouse	2,293	14	0.6
County Total	41,641	1,071	2.6%

*Garden Apartment -- Multi-family structure having one to four stories.
Elevator Apartment -- Multi-family structure having more than four stories.
Townhouse -- Single-family-attached structure.

**Figures include only those units located in major rental housing projects having five or more units.

Source: Fairfax County Office of Research and Statistics, 1982 Rental Housing Survey.

ASSISTED HOUSING UNITS BY SOURCE OF ASSISTANCE

Fairfax County, 1981 and 1982

Source of Assistance	Housing Units*	
	1981	1982
<u>Fairfax County Redevelopment and Housing Authority (FCRHA) Operated</u>		
Occupied/Owned	337	381
Occupied/Leased	736	736
Under Construction	46	184
Proposed	414	316
Total FCRHA Operated	1,533	1,617
<u>Federal/State Assisted</u>		
Occupied/Rental	3,291	3,891
Occupied/Owner	285	621
Under Construction/Rental	799	146
Under Construction/Owner	295	—
Proposed	990	2,297
Total Federal/State Assisted	5,660	6,955
<u>Federal/Local Rehabilitation</u>	263	354
<u>Total Assisted</u>		
Existing	4,912	5,983
Under Construction	1,094	330
Proposed	1,450	2,613
Total Assisted	7,456	8,926

*Data as of January for years cited.

Source: Fairfax County Department of Housing and Community Development.

EFFECTIVE INTEREST RATES* FOR HOUSING PURCHASES
FOR ALL TYPES OF LENDING INSTITUTIONS
United States and Washington SMSA, 1970 to 1982

Year	Purchase of New Home		Purchase of Existing Home	
	United States	Washington SMSA**	United States	Washington SMSA**
1970	8.45		8.36	
1971	7.74		7.67	
1972	7.60		7.51	
1973	7.95	8.23	8.01	8.20
1974	8.92	8.65	9.01	8.87
1975	9.01	9.10	9.21	9.14
1976	8.99	9.06	9.11	9.08
1977	9.01	8.62	9.02	8.97
1978	9.54	9.58	9.58	9.67
1979	10.77	10.75	10.92	10.88
1980	13.28	13.73	13.58	13.73
1981	15.87	14.90	16.04	14.90
1982	15.40***	14.84***	15.56***	14.84***

*The effective interest rate includes the contract interest rate and additional fees (such as points) assumed by the buyer at the time of purchase, amortized throughout the projected life of the loan.

**Data for the Washington SMSA are not available for 1970 through August 1973. Data for 1973 reflect monthly rates for September through December.

***Data for Washington SMSA are as of June for year cited and reflects purchase of new and existing homes.

Source: Federal Home Loan Bank Board, News.

MONTHLY PRINCIPAL AND INTEREST PAYMENTS OVER 30 YEARS

Mortgage Amount	10%	10½%	11%	11½%	12%	12½%	13%	13½%	14%	14½%	15%	15½%	16%
\$ 20,000	\$176	\$183	\$190	\$194	\$ 206	\$ 214	\$ 221	\$ 229	\$ 237	\$ 245	\$ 253	\$ 261	\$ 269
\$ 24,000	211	220	229	233	247	256	266	275	284	294	303	313	323
\$ 28,000	246	256	267	272	288	299	310	321	332	343	354	365	377
\$ 32,000	281	293	305	311	329	342	354	367	379	392	405	417	430
\$ 36,000	316	329	343	350	370	384	398	413	427	441	455	470	484
\$ 40,000	351	366	381	388	411	427	443	458	474	490	506	522	538
\$ 44,000	386	403	419	427	453	470	487	504	521	539	557	574	592
\$ 48,000	421	439	457	466	494	512	531	550	569	588	607	626	646
\$ 52,000	457	476	495	505	535	555	575	596	616	637	658	678	699
\$ 56,000	492	512	533	544	576	598	620	642	664	686	708	731	753
\$ 60,000	527	549	571	583	617	641	664	688	711	735	759	783	807
\$ 64,000	562	585	610	622	658	683	708	733	758	784	810	835	861
\$ 68,000	597	622	648	660	699	726	753	779	806	833	860	887	914
\$ 72,000	632	659	686	699	741	769	797	825	853	882	910	939	968
\$ 76,000	667	695	724	738	782	811	841	871	901	931	961	991	1,022
\$ 80,000	702	732	762	777	823	854	885	917	948	980	1,012	1,044	1,076
\$ 84,000	738	768	800	816	864	897	930	963	995	1,029	1,063	1,096	1,130
\$ 88,000	773	805	838	855	905	939	974	1,008	1,043	1,078	1,113	1,148	1,183
\$ 92,000	808	842	876	894	946	982	1,018	1,054	1,090	1,127	1,163	1,200	1,237
\$ 96,000	843	878	914	932	987	1,025	1,062	1,100	1,138	1,176	1,214	1,252	1,291
\$100,000	878	915	952	971	1,029	1,068	1,107	1,146	1,185	1,225	1,265	1,305	1,345

Source: New Homes Guide.

VII NONRESIDENTIAL CHARACTERISTICS

PROPORTION OF ACREAGE ZONED FOR COMMERCIAL AND INDUSTRIAL USES

Fairfax County, 1964 to 1982

Year	Acres Zoned Commercial and Industrial	Percent of Total Acreage
1964	5,793	2.4%
1965	6,106	2.6
1966	6,272	2.6
1967	6,512	2.7
1968	6,780	2.8
1969	7,450	3.1
1970	7,707	3.2
1971	8,270	3.4
1972	Not Reported	---
1973	8,668	3.6
1974	9,271	3.9
1975	8,951	3.7
1976	8,757	3.6
1977	10,120	4.3
1978	10,662	4.5
1979	13,145	5.6
1980	13,177	5.6
1981	14,005	5.9
1982	14,516	6.2

Note: Total County zoned acreage in 1982 is estimated to be 233,982 acres.

Sources: Office of Comprehensive Planning, Composite County Zoning Totals, 1964 to 1970.
Volume 1, Presentation of Alternatives, 5 Year Countywide Development Program, Fairfax County, Virginia, August 7, 1972. (For 1971 data.)
Fairfax County Office of Research and Statistics,
1982 Standard Reports.

STRUCTURES USED FOR NONRESIDENTIAL ACTIVITIES

BY ACTIVITY TYPE

Fairfax County, 1982

Type of Activity	Structures	
	Number	Percent
<u>Commercial</u>		
Office*		
General Low-Rise	496	13.9%
General Medium/High-Rise	79	2.2
Other Office	313	8.8
<u>Retail</u>		
Free-Standing Stores		
Food	76	2.1
Restaurants	177	4.9
Transportation Accessories and Repair	423	11.8
Other Free-Standing Stores	301	8.4
Shopping Centers	383	10.7
<u>Industrial</u>		
Manufacturing	37	1.0
Transportation/Utilities/Communications	57	1.6
Warehousing	348	9.7
Other Industrial	63	1.8
<u>Institutional</u>		
Educational	240	6.7
Public/Quasi-Public	76	2.1
Recreational	190	5.3
Religious	257	7.2
Other Institutional	65	1.8
County Total	3,581**	100.0%

*Low-rise offices are up to and including four stories in height; medium/high-rise offices are five or more stories in height.

**The structures at Fort Belvoir Military Reservation and Lorton Reformatory are not included in the inventory because of their unique characteristics.

Source: Fairfax County Office of Research and Statistics.

STRUCTURES USED FOR NONRESIDENTIAL ACTIVITIES

BY PLANNING DISTRICT

Fairfax County, 1982

Planning District	Structures	
	Number	Percent
Annandale	382	10.7%
Baileys	227	6.3
Bull Run	138	3.9
Fairfax	115	3.2
Jefferson	268	7.5
Lincolnia	69	1.9
Lower Potomac	78	2.2
McLean	405	11.3
Mount Vernon	411	11.5
Pohick*	169	4.7
Rose Hill	93	* 2.6
Springfield	332	9.3
Upper Potomac**	406	11.3
Vienna***	<u>488</u>	<u>13.6</u>
County Total	3,581	100.0%

*Includes the Town of Clifton.

**Includes the Town of Herndon.

***Includes the Town of Vienna.

Source: Fairfax County Office of Research and Statistics,
1982 Standard Reports.

GROSS FLOOR AREA* OF NONRESIDENTIAL STRUCTURES

BY ACTIVITY TYPE

Fairfax County, 1982

Type of Activity	Gross Floor Area*	
	Square Feet	Percent
<u>Commercial</u>		
Office**		
Low-Rise	11,977,220	12.7%
Medium/High-Rise	15,279,824	16.2
Retail		
Free-Standing Stores		
Food	329,979	0.4
Restaurants	717,708	0.8
Motor Vehicle Sales and Accessories	2,130,239	2.3
Other Free-Standing Establishments	2,939,560	3.1
Shopping Centers	17,278,349	18.3
Motels, Hotels, and Tourist Homes	1,920,214	2.0
<u>Industrial</u>		
Manufacturing	1,204,145	1.3
Transportation/Utilities/Communications	1,011,480	1.1
Warehousing	14,627,000	15.5
Other Industrial	186,423	0.2
<u>Institutional***</u>		
Health Related	1,188,616	1.3
Educational	17,683,045	18.8
Public/Quasi-Public	1,251,339	1.3
Recreational	1,507,954	1.6
Religious	2,202,193	2.3
Other Institutional	749,510	0.8
County Total	94,184,798	100.0%

*Gross Floor Area is the area within the perimeter of the outside walls of a building taking into account the number of stories contained in the structure. Space used for interior features such as stairwells and elevator shafts is included in the gross floor area.

**Low-rise offices are up to and including four stories in height. Medium/high-rise offices are five or more stories in height.

***The structures at Fort Belvoir Military Reservation, Lorton Reformatory, and the Central Intelligence Agency are not included in the inventory because of their unique characteristics.

Source: Fairfax County Office of Research and Statistics, 1982 Nonresidential Structures File.

SHOPPING CENTERS BY PLANNING DISTRICT

Fairfax County, 1980

Planning District	Shopping Centers	
	Total	Percent
Annandale	13	9.9%
Baileys	11	8.4
Bull Run	4	3.0
Fairfax	2	1.5
Jefferson	12	9.0
Lincolnia	3	2.3
Lower Potomac	0	0.0
McLean	14	10.6
Mount Vernon	18	13.6
Pohick*	10	7.6
Rose Hill	2	1.5
Springfield	15	11.4
Upper Potomac**	13	9.8
Vienna***	<u>15</u>	<u>11.4</u>
County Total	132	100.0%

*Includes the Town of Clifton.

**Includes the Town of Herndon.

***Includes the Town of Vienna.

Source: Fairfax County Office of Research and Statistics,
1980 Shopping Center File.

BUSINESSES WITHIN SHOPPING CENTERS

BY PLANNING DISTRICT

Fairfax County, 1980

Planning District	Businesses	
	Number	Percent
Annandale	196	7.9%
Baileys	255	10.3
Bull Run	75	3.0
Fairfax	34	1.4
Jefferson	151	6.1
Lincolnia	44	1.8
Lower Potomac	0	0.0
McLean	277	11.2
Mount Vernon	291	11.8
Pohick*	217	8.8
Rose Hill	43	1.8
Springfield	393	15.9
Upper Potomac**	286	11.5
Vienna***	<u>211</u>	<u>8.5</u>
County Total	2,473	100.0%

*Includes the Town of Clifton.

**Includes the Town of Herndon.

***Includes the Town of Vienna.

Source: Fairfax County Office of Research and Statistics,
1980 Shopping Center File.

BUSINESSES WITHIN SHOPPING CENTERS

BY BUSINESS TYPE

Fairfax County, 1980

Business Type	Businesses	
	Number	Percent
Cultural, Educational, Entertainment	56	2.3%
Industrial	2	0.1
Public and Quasi-Public	26	1.0
Recreational	22	0.9
Retail		
Food		
Prepared	302	12.2
Unprepared	155	6.3
General Merchandise		
Apparel and Fashion Accessories	375	15.2
Appliances and Home Furnishings	208	8.4
Building and Home Improvement Supplies	70	2.8
Drugs	60	2.4
Hobby and Recreational Supplies	225	9.1
Variety Goods	55	2.2
Other General Merchandise	173	7.0
Transportation Accessories	59	2.4
Services		
Personal Services		
Hairstyling	165	6.7
Laundering	93	3.8
Other Personal Services	30	1.2
Professional Services		
Financial	139	5.6
Real Estate	76	3.1
Other Professional Services	129	5.2
Other Services	49	2.0
Transient Lodging	1	0.0
Transportation	3	0.1
County Total	2,473	100.0%

Source: Fairfax County Office of Research and Statistics, 1980 Shopping Center File.

NUMBER OF RETAIL BUSINESS ESTABLISHMENTS BY BUSINESS CLASSIFICATION

Fairfax County, 1976 to 1981

8-11/8

Business Classification	1976	1977	1978	1979	1980	1981
Apparel	343	348	371	375	401	434
Automotive	620	668	667	685	712	729
Food	910	966	1,012	1,027	1,082	1,121
Furniture, Home Furnishings, and Equipment	543	613	683	712	776	891
General Merchandise	449	481	525	557	662	874
Lumber and Building Supplies	316	328	351	365	381	383
Fuel	49	41	40	42	41	39
Machinery, Equipment, and Supplies	304	359	384	418	481	532
Miscellaneous	2,367	2,513	2,746	2,944	3,075	3,275
Hotels, Motels, et cetera	54	54	55	57	54	50
Other Miscellaneous and Unidentifiable	7	5	5	5	6	9
Totals	5,962	6,376	6,839	7,187	7,671	8,337

Source: Commonwealth of Virginia, Department of Taxation, Taxable Sales, for years cited.

TAXABLE SALES BY RETAIL BUSINESS CLASSIFICATION

Fairfax County, 1976 to 1981

Business Classification	Taxable Sales					
	1976	1977	1978	1979	1980	1981
Apparel	\$ 115,003,988	\$ 126,409,587	\$ 144,408,527	\$ 154,484,895	\$ 169,119,351	\$ 209,187,688
Automotive	64,943,945	73,912,320	85,755,114	95,097,627	103,076,385	112,786,412
Food	496,666,952	555,312,087	618,900,593	722,476,310	782,739,302	886,725,077
Furniture and Home Furnishings	72,542,669	86,282,170	120,530,814	114,818,463	136,057,143	152,836,690
General Merchandise	348,901,875	370,347,772	393,464,673	419,937,151	482,193,669	569,884,772
Lumber and Building Supplies	158,783,998	177,421,718	203,879,277	222,909,738	212,269,583	197,580,132
Fuel	13,614,360	12,401,024	14,901,483	19,220,930	22,606,306	24,097,603
Machinery, Equipment, and Supplies	28,370,433	36,910,798	53,556,414	62,867,213	70,768,612	84,649,588
Miscellaneous	141,756,929	161,391,369	188,713,022	209,622,674	231,552,522	256,753,261
Hotels and Motels	21,075,723	25,900,163	31,201,398	34,964,617	40,749,404	45,273,558
Other	1,592,805	2,593,040	2,273,546	5,732,903	4,516,553	4,782,749
Totals	\$1,463,253,677	\$1,628,882,048	\$1,857,584,861	\$2,062,132,521	\$2,255,648,830	\$2,544,557,530

Source: Commonwealth of Virginia, Department of Taxation, Taxable Sales, for years cited.

TAXABLE SALES AND PER CAPITA TAXABLE SALES

Fairfax County, 1971 to 1981

Year	Taxable Sales	Annual Percent Change	Total Population*	Per Capita Taxable Sales
1971	\$ 756,978,280		470,600	\$1,608
1972	849,088,695	12.2%	487,600	1,741
1973	1,032,017,257	21.5	505,700	2,041
1974	1,210,819,974	17.3	522,200	2,319
1975	1,298,730,646	7.3	537,200	2,418
1976	1,463,253,677	12.7	554,500	2,639
1977	1,628,882,048	11.3	562,800	2,894
1978	1,857,584,861	14.0	571,000	3,253
1979	2,062,132,521	11.0	584,200	3,530
1980	2,255,648,821	9.4	596,901	3,779
1981	2,544,557,530	12.8	612,600	4,154

*Total population estimate as of January of cited years.

Sources: Commonwealth of Virginia, Department of Taxation, Taxable Sales, for cited years.
Fairfax County Office of Research and Statistics.

NUMBER OF FIRMS BY INDUSTRIAL GROUP

Fairfax County, 1965 to 1981

	Number of Firms by Year						
	1965	1971	1973	1975	1977	1979	1981
Research and Technical Manufacturing	43	181	222	232	276	342	424
National and International Trade and Professional Associations		4	40	52	66	100	115
Wholesale Distribution	32	142	195	204	242	264	270
Contract Construction		133	141	161	166	200	205
Other Manufacturing	55	83	118	133	140	148	169
Transportation Warehousing		24	37	39	35	49	67
Miscellaneous Industrial Services		48	91	139	212	304	434
Major Utility Installation	<u> </u>	<u> 2 </u>	<u> 3 </u>	<u> 4 </u>	<u> 5 </u>	<u> 6 </u>	<u> 6 </u>
TOTAL	130	617	847	964	1,142	1,413	1,690

II-III

Source: Fairfax County Economic Development Authority, Directory of Business and Industry.

Note: Form was expanded in 1968 in order to adequately account for the number of new and diverse firms entering the County.

INDUSTRIAL GROWTH STATISTICAL SUMMARY*

Fairfax County, 1981

Classification	Firms		Square Feet		Employees	
	Number	Percent	Number	Percent	Number	Percent
Research & Technical Manufacturing	424	25.1%	8,954,456	37.0%	31,584	43.5%
National & International Trade & Professional Associations	115	6.8	1,358,313	5.6	3,758	5.2
Wholesale Distribution	270	16.0	4,625,821	19.1	6,860	9.5
Contract Construction	205	12.1	972,447	4.0	7,417	10.2
Other Manufacturing	169	10.0	1,838,876	7.6	4,246	5.9
Transportation & Warehousing	67	4.0	2,372,092	9.8	3,011	4.2
Corporate Headquarters, Administra- tive & Marketing Offices, Manufacturing Representatives	260	15.4	2,842,442	11.7	9,834	13.5
Other Industrial Services	174	10.3	646,908	2.7	4,222	5.8
Major Utility Installations	6	0.3	610,950	2.5	1,629	2.2
TOTAL	1,690	100.0%	24,222,305	100.0%	72,561	100.0%

*Consists of information from the 1,690 basic employers in the County.

Source: Fairfax County Economic Development Authority, Directory of Business and Industry.

NONRESIDENTIAL BUILDING PERMIT ACTIVITY*

Fairfax County, FY1970 to FY1982

Fiscal Year	Authorized Permits	
	Number	Estimated Cost
1970	176	\$ 28,554,307
1971	154	58,297,040
1972	197	77,764,644
1973	168	37,261,015
1974	125	117,238,493
1975	77	45,443,050
1976	67	43,903,600
1977	108	56,606,043
1978	202	109,069,336
1979	333	259,987,302
1980	301	200,364,155
1981	258	96,009,903
1982	193	162,003,995

*Applies to permits issued for new construction.

Source: Fairfax County Department of Environmental
Management, Inspection Services Division.

NONRESIDENTIAL PROJECTS WITHIN

THE DEVELOPMENT PROCESS*

Fairfax County, January 1982

Type of Activity	Projects	
	Number	Percent
Transient Lodging	17	3.4%
Warehouse/Industrial Park	70	14.0
Other Industrial	70	14.0
Transportation/Communications/Utilities	14	2.8
Shopping Centers	12	2.4
General Merchandise	15	3.0
Food Retail	23	4.6
Transportation Retail	13	2.6
Office/Service	222	44.4
Public/Quasi-Public	6	1.2
Church/Synagogue	18	3.6
School	9	1.8
Other Institutional Use	11	2.2
Total Projects	500	100.0%

*The development process includes the rezoning of land, site plan submission and review, the issuance of building permits, and the construction of the physical structures.

Source: Fairfax County Office of Research and Statistics, Nonresidential Development Process File.

AMOUNT AND TYPE OF DEPOSITS HELD BY FINANCIAL
INSTITUTIONS (THOUSANDS OF DOLLARS)
Fairfax County, 1980

Type of Deposits	Deposits	
	Amount	Percent
<u>Commercial Banks</u>		
Private Demand	\$ 476,642	15.2%
Private Savings	324,166	10.4
Private Time Other Than Savings	436,717	14.0
Public Funds (Demand and Time Savings)	<u>99,817</u>	<u>3.2</u>
	\$1,337,342	42.8%
<u>Thrift Institutions</u>		
Savings	\$1,785,426	57.2%
Total	\$3,122,768	100.0%

Source: Taylor Murphy Institute, 1980 Deposit Statistics for Banks and Thrift Institutions in Virginia Communities, August 1981.

AMOUNT OF DEPOSITS BY TYPE OF FINANCIAL INSTITUTION

(THOUSANDS OF DOLLARS)

Northern Virginia Jurisdictions, 1980

VII-16

Jurisdictions	Commercial Banks		Thrift Institutions		Total	
	Amount	Percent	Amount	Percent	Amount	Percent
Counties						
Fairfax	\$1,337,342	42.8%	\$1,785,426	57.2%	\$3,122,768	100.0%
Arlington	843,822	43.2	1,107,442	56.8	1,951,264	100.0
Prince William	145,583	37.1	247,094	62.9	392,677	100.0
Loudoun	186,997	80.0	47,145	20.0	234,142	100.0
Cities						
Alexandria	539,548	62.6	322,862	37.4	862,410	100.0
Fairfax	220,710	67.2	107,945	32.8	328,655	100.0
Falls Church	111,391	63.9	62,863	36.1	174,254	100.0
Manassas and Manassas Park	79,664	92.0	6,968*	8.0	86,632	100.0
Northern Virginia Total	\$3,465,057	48.4%	\$3,687,745	51.6%	\$7,152,802	100.0%

*Includes the independent city of Manassas only.

Source: Tayloe Murphy Institute, 1980 Deposit Statistics for Banks and Thrift Institutions in Virginia Communities, August 1981.

TOTAL DEPOSITS HELD BY FINANCIAL INSTITUTIONS

(THOUSANDS OF DOLLARS)

Northern Virginia Jurisdictions, 1979 and 1980

Jurisdiction	<u>1979 Total Deposits</u>		<u>1980 Total Deposits</u>		Percent Change 1979 to 1980
	Amount	Percent	Amount	Percent	
Counties					
Fairfax	\$2,759,565	41.6%	\$3,122,768	43.7%	13.2%
Arlington	1,898,228	28.6	1,951,264	27.3	2.8
Prince William	354,510	5.4	392,677	5.5	10.8
Loudoun	225,810	3.4	234,142	3.3	3.7
Cities					
Alexandria	832,137	12.6	862,410	12.0	3.6
Fairfax	318,177	4.8	328,655	4.6	3.3
Falls Church	152,814	2.3	174,254	2.4	14.0
Manassas and Manassas Park	86,124	1.3	86,632	1.2	0.6
Northern Virginia Total	\$6,627,365	100.0%	\$7,152,802	100.0%	7.9%

Source: Tayloe Murphy Institute, 1980 Deposit Statistics for Banks and Thrift Institutions in Virginia Communities, August 1981.

AGRICULTURAL CHARACTERISTICS

Fairfax County, 1964, 1969, 1974, 1978

VII-18

Characteristic	Year			
	1964	1969	1974	1978
Number of Farms	128	278	230	187
Average Number of Acres Per Farm	148.5	130.2	106.6	109.0
Total Acres of Land in Farms	32,369	36,211	24,526	20,464
Average Value of Land and Buildings Per Farm	\$ 197,455	\$ 267,077	\$ 271,739	\$ 364,976
Market Value of All Agricultural Products Sold	\$2,167,850	\$2,538,384	\$2,591,000	\$4,126,000
Average Market Value of Products Per Farm	\$ 9,944	\$ 9,130	\$ 11,265	\$ 22,065
Average Age of Farm Operators (in years)	56.4	54.6	56.0	53.1

Source: U.S. Department of Commerce, Bureau of the Census, Census of Agricultural; County Data, for years cited.

VIII REVENUES AND EXPENDITURES

TAX RATES FOR REAL ESTATE AND
PERSONAL PROPERTY BY JURISDICTION
Washington, D.C. SMSA for Tax Year 1982*

Jurisdiction	Real Estate Property Tax Rate	Personal Property Tax Rate
Fairfax County	\$1.47 per \$100 assessed valuation, 100% of appraisal value	\$4.80 per \$100
Arlington County	\$0.98 per \$100 assessed valuation, 100% of appraisal value	\$5.10 per \$100
Prince William County**	\$1.42 per \$100 assessed valuation, 100% of appraisal value	\$4.00 per \$100
Loudoun County	\$1.13 per \$100 assessed valuation, 100% of appraisal value	\$5.00 per \$100
Alexandria City	\$1.37 per \$100 assessed valuation, 100% of appraisal value	\$5.20 per \$100
Fairfax City	\$1.15 per \$100 assessed valuation, 100% of appraisal value	\$2.99 per \$100
Falls Church City	\$0.96 per \$100 assessed valuation, 100% of appraisal value	\$5.50 per \$100
Manassas City	\$1.20 per \$100 assessed valuation, 100% of appraisal value	\$3.00 per \$100
Manassas Park City	\$1.90 per \$100 assessed valuation, 100% of appraisal value	\$3.50 per \$100
Montgomery County***	\$3.42 per \$100 assessed valuation, 45.6% of appraisal value	\$3.42 per \$100
Prince George's County	\$3.385 per \$100 assessed valuation, 46.63% of appraisal value	\$3.385 per \$100
District of Columbia	\$1.54 per \$100 assessed valuation, non-owner occupied, 100% of appraisal value	\$3.10 per \$100
	\$1.22 per \$100 assessed valuation, owner occupied, 100% of appraisal value	\$3.10 per \$100
	\$2.13 per \$100 assessed valuation, non-residential, 100% of appraisal value	

*Tax year is January 1 through December 31, except for the District of Columbia where the tax year is July 1 to June 30.

**Indicates base rate which excludes levies added to real estate and personal property tax rates.

***Real estate tax rate varies throughout Montgomery County, Maryland.

Source: Fairfax County Office of Research and Statistics.

GENERAL FUND PROPERTY TAX RATE PER \$100 ASSESSED VALUATION

Fairfax County, FY1970 to FY1983

Fiscal Year	Real Estate	Personal Property*		
		Regular	Machinery and Tools	Research and Development
1970	4.30	4.30	3.25	3.25
1971	4.30	4.30	3.25	3.25
1972	4.30	4.30	3.25	3.25
1973	4.30	4.30	3.25	3.25
1974	4.30	4.30	3.25	3.25
1975	4.10	4.30	3.25	3.25
1976	3.85	4.30	3.25	3.25
1977	4.35	4.80	3.75	3.75
1978**	1.75	4.80	3.75	3.75
1979**	1.64	4.80	3.75	3.75
1980**	1.54	4.80	3.75	3.75
1981**	1.54	4.80	3.75	3.75
1982**	1.51	4.80	3.75	3.75
1983**	1.47	4.80	3.75	3.75

*Beginning in FY1967, the majority of personal property owned by public service corporations is taxed at the real estate rate. Beginning in FY1978, mobile homes are separately classified as personal property and taxed at the real estate rate.

**Beginning in FY1978, tax rates were applied to assessments at 100 percent of market value. Tax rates for previous fiscal years were applied to assessments at 40 percent of market value.

Source: County of Fairfax, Approved Fiscal Plan, for years shown.

PERCENTAGE CHANGE IN TOTAL ASSESSED VALUE
OF TAXABLE LOCALLY ASSESSED REAL PROPERTY
Fairfax County, CY1970 to CY1982

Calendar Year*	Total Assessed Value**	Percentage Change
1970	\$ 1,641,749,466	---
1971	1,836,488,731	11.9%
1972	2,159,310,261	17.6
1973	2,506,154,471	16.1
1974	2,898,952,185	15.7
1975	3,449,965,845	19.0
1976	3,783,610,010	9.7
1977***	10,664,101,895	12.7
1978***	12,089,939,335	13.3
1979***	13,922,802,830	15.1
1980***	16,565,453,315	19.0
1981***	20,025,948,400	20.9
1982***	23,186,848,540	15.8

*Represents assessed values as of January 1 of years shown.

**Total assessed values shown exclude real estate owned by public service corporations and tax exempt properties.

***Represents assessments based on 100 percent of market value. Assessed value of previous years is based on 40 percent of the market value. This change in the rate of assessment has been taken into account in determining percentage change to provide comparable data.

Source: Fairfax County Office of Assessments, The Real Estate Land Book.

RATIO OF ASSESSED VALUE OF TAX-EXEMPT REAL PROPERTIES
TO THE ASSESSED VALUE OF ALL LOCALLY ASSESSED PROPERTIES

Fairfax County, CY1970 to CY1982

Calendar Year*	Assessed Value of Real Properties**		Ratio of Tax-Exempt to Total
	Total	Tax-Exempt	
1970	\$ 1,825,267,946	\$ 183,518,480	10.1%
1971	2,048,734,206	212,245,475	10.4
1972	2,394,720,771	235,410,510	9.8
1973	2,771,759,746	265,605,275	9.6
1974	3,194,732,120	295,779,935	9.3
1975	3,795,633,820	345,667,975	9.1
1976	4,167,493,040	383,883,030	9.2
1977***	11,908,708,705	1,244,606,810	10.5
1978***	13,565,436,830	1,475,497,495	10.9
1979***	15,651,448,840	1,728,646,010	11.0
1980***	18,447,469,998	1,882,016,683	10.2
1981***	22,139,298,268	2,113,349,868	9.5
1982***	25,584,409,813	2,397,561,273	9.4

*Represents assessed values as of January 1 of years shown.

**Total assessed values shown exclude real estate owned by public service corporations.

***Represents assessments based on 100 percent of market value. Assessed value of previous years is based on 40 percent of the market value.

Source: Fairfax County Office of Assessments, Real Estate Land Book.

ASSESSED VALUATION OF ALL TAXABLE PROPERTY*

Fairfax County, FY1970 to FY1981

Fiscal Period	Real** Property	Personal Property	Other***	Total
1970	1,423,561,909	206,556,457	83,177,743	1,713,296,109
1971	1,641,749,466	237,650,250	94,346,408	1,973,746,124
1972	1,836,488,713	274,798,214	108,500,174	2,219,787,119
1973	2,160,672,320	323,449,861	119,941,391	2,604,063,572
1974	2,517,312,928	360,928,084	124,593,421	3,002,834,433
1975	2,899,521,540	422,130,896	133,617,639	3,455,270,075
1976	3,415,772,652	471,371,360	138,499,193	4,025,643,205
1977	3,763,904,744	521,656,648	156,200,299	4,441,761,621
1978	10,656,469,023	590,197,331	401,328,402	11,647,994,756
1979	12,104,826,644	710,577,435	444,888,859	13,260,292,938
1980	13,936,574,578	851,856,796	524,725,983	15,313,157,357
1981	16,575,266,205	968,436,424	568,904,483	18,112,607,112

*Assessed values are as of June 30 of the fiscal year cited and are net of exonerations and tax relief for the elderly and disabled.

**Beginning January 1, 1977, for FY1978, real property assessments are based on 100 percent of market value; real property assessments for previous fiscal years were based on 40 percent of market value.

***Assessed value of public service corporation real and personal property.

Sources: County of Fairfax, Virginia, Annual Financial Report, for FY1970 to FY1981.

REVENUE SOURCES (000's) FOR ALL GOVERNMENTAL FUNDS

Fairfax County, FY1970 to FY1981

Fiscal Year	Total	Local			State	Federal
	Total Revenue* All Sources	Total Revenue From Local Sources	Revenue From Property** Taxes	Other Local Sources	Revenue From Commonwealth	Revenue From Federal Government
1970	\$161,814	\$110,387	\$ 73,056	\$ 37,331	\$38,391	\$13,036
1971	187,187	128,494	84,982	43,512	41,302	17,391
1972	213,304	149,988	96,139	53,849	47,438	15,878
1973	256,630	178,205	112,366	65,839	53,833	24,592
1974	289,779	205,399	128,958	76,441	60,192	24,188
1975	318,925	223,543	141,444	82,099	66,186	29,196
1976	349,429	245,124	159,248	85,876	72,022	32,283
1977	395,829	289,206	196,986	92,220	73,743	32,880
1978	435,825	329,306	222,556	106,750	77,501	29,018
1979	482,862	362,753	242,110	120,643	81,011	39,098
1980	536,406	406,940	265,422	141,518	88,396	41,070
1981	636,898	464,779	372,264	92,515	128,219	43,900

*Revenue sources are not total income sources for the County; excluded are bond sales and other "non-revenue" items.

**Property taxes include real and personal property.

Sources: County of Fairfax, Virginia, Financial Statements and Supplementary Data, for fiscal years 1970 to 1975.
 County of Fairfax, Virginia, Annual Financial Report, for FY1976 - FY1981.

REVENUES RECEIVED FROM LICENSES AND NON-PROPERTY TAXES

Fairfax County, FY1970 to FY1981

Fiscal Year	Sales Tax	Utility Tax*	BPOL**	Vehicle License Tax	Cigarette Tax
1970	\$ 6,467,000	\$ 6,153,000	\$ 1,335,000	\$1,822,000	N/A
1971	7,256,000	6,615,000	1,715,000	1,964,000	\$1,719,000
1972	8,331,000	12,844,000	2,522,000	2,210,000	1,948,000
1973	9,770,000	15,260,000	4,500,000	3,501,000	2,041,000
1974	11,457,000	16,538,000	4,796,000	3,836,000	2,145,000
1975	12,669,000	16,299,000	4,988,000	4,008,000	2,214,000
1976	14,154,000	15,138,000	5,525,000	5,812,000	2,292,000
1977	15,945,000	16,728,000	6,270,000	6,290,000	2,370,000
1978	18,282,000	19,147,000	6,963,000	6,712,000	2,367,000
1979	21,156,356	20,837,860	8,775,923	6,995,034	2,413,455
1980	25,997,595***	25,320,098****	10,423,250	7,240,999	2,495,764
1981	27,017,377	25,577,077	12,773,213	7,544,443	2,604,140

*There were major reductions in the gas and electric rates midway through FY1975, and a somewhat lesser reduction in the telephone rate at the end of FY1974.

**Business, Professional and Occupational License Tax.

***Includes windfall revenues of \$2,008,113 based on revised State accounting.

****Includes windfall revenues of \$1,868,610 based on revised State accounting.

Source: Fairfax County Office of Management and Budget, Approved Fiscal Plan, for years shown.

PERSONAL AND REAL TAX COLLECTION

Fairfax County, FY1970 to FY1981

Fiscal Year	Total Tax Levy**	Collection Of Current Taxes***	Percent of Levy Collected****	Collection Of Back Taxes*****	Total Collection of Current and Back Taxes	Percent Of Current and Back Taxes Collected to Tax Levy
1970	75,238,892	72,878,146	96.86	1,083,763	73,961,909	98.30
1971	86,592,905	84,095,085	97.12	1,946,279	86,041,364	99.36
1972	97,334,385	95,251,065	97.85	2,148,868	97,392,111	100.05
1973	114,230,381	112,023,948	98.06	1,911,140	113,935,088	99.74
1974	131,596,477	129,160,610	98.15	1,721,009	130,881,619	99.46
1975	145,283,084	141,906,977	97.68	1,892,143	143,799,120	98.98
1976	159,586,834	157,368,693	98.61	3,139,310	160,508,003	100.58
1977	198,592,132	196,588,887	98.99	3,483,293	200,072,180	100.75
1978	224,278,814	222,296,535	99.12	2,458,732	224,755,267	100.21
1979	239,911,000	238,302,000*****	99.33	2,691,000	240,993,000	100.45
1980	263,515,000	261,429,000	99.21	2,602,000	264,031,000	100.20
1981*	309,897,000	307,589,000	99.26	4,040,000	311,629,000	100.56

*FY1981 data include regular, elderly, and disabled tax relief exonerations, refunds, Norfolk Plan real estate supplemental tax levies, and personal property omitted tax levies.

**The total levy is the levy for General Fund real and personal property taxes and does not include the property tax levy for Special Revenue Funds, i.e., for Refuse Collection and Community Centers.

***Current collections do not include tax collections for the Special Revenue Funds or payments in lieu of taxes. As a result of revised accounting procedures, from FY1979 to FY1981 the collection of penalty and interest payments for late payments of current taxes is included in the collection of current taxes rather than under the collection of back taxes.

****The percentage of levy is not the collection rate since current collections also include penalty and interest payments on current taxes.

*****Collection of back taxes for FY1975 to FY1981 includes penalty and interest charges on past due taxes. From FY1979 to FY1981 revenue from land redemptions is included under collection of back taxes.

*****The FY1979 actual collection excludes \$823,471 in prepaid real estate taxes.

Sources: County of Fairfax, Virginia, Financial Statements and Supplementary Data, for FY1970 to FY1980.
County of Fairfax, Virginia, Office of Management and Budget for FY1981.

COUNTY VEHICLE LICENSES* ISSUED BY TYPE

Fairfax County, 1970 to 1981

Calendar Year	Type of Vehicle License Issued				Total
	Regular**	Motorcycle	Military***	Other****	
1970	181,193	2,307	21,678	3,627	208,805
1971	202,931	2,998	23,145	15,110	244,184
1972	227,497	3,550	25,211	15,486	271,744
1973	234,436	4,250	24,594	14,193	277,473
1974	258,829	5,766	24,599	15,445	304,639
1975	275,715	5,759	24,093	16,736	322,303
1976	293,253	5,465	25,203	19,512	343,433
1977	316,569	5,435	24,641	18,276	364,921
1978	326,463	5,076	21,738	20,296	373,573
1979	354,057	5,350	18,628	12,926	390,961
1980	356,123	5,559	18,095	12,024	391,801
1981	368,620	5,705	17,867	12,674	404,866

*The Fairfax County Code provides that every owner of a motor vehicle which is normally garaged, stored, or parked in the County shall annually secure a County vehicle license.

**Regular licenses are issued to owners of cars and trucks who declare the County as their place of residence.

***Military personnel owning a vehicle and storing it in the County, but declaring another jurisdiction as their residence, must obtain a County vehicle license for it at no charge.

****"Other" includes duplicates and transfers for regular licenses and tags issued for government-owned vehicles.

Source: Fairfax County Office of Finance.

LONG-TERM BONDED INDEBTEDNESS

Fairfax County, FY1970 to FY1981

Fiscal Year Ending June 30	Total Long Term Bonded Indebtedness	Self- Supporting Debt*	Net Bonded Indebtedness**
1970	217,601,485	46,975,000	170,636,485
1971	292,401,680	76,940,000	215,461,680
1972	327,235,980	77,163,331	250,072,650
1973	340,640,954	75,927,499	264,713,455
1974	376,662,101	73,776,666	302,885,435
1975	386,231,248	71,405,833	314,825,415
1976	372,780,395	68,835,000	303,945,395
1977	373,275,375	66,410,000	306,865,375
1978	386,066,525	66,445,000	319,621,525
1979	405,465,800	63,790,000	341,675,800
1980	410,188,900	60,895,000	349,293,900
1981	379,179,500	57,855,000	321,324,500

*Self-supporting debt is paid by means of service charges and not from the general fund. Included in this category are integrated sewer system bonds and special revenue bonds.

**Net debt is the difference between total long-term indebtedness and self-supporting debt.

Sources: County of Fairfax, Virginia, Report on Audit, Schedules A-2 for FY1962 to FY1967.
Fairfax County Office of Management and Budget,
Amortization Schedule of County Debt.

TREND OF NET DEBT AS A PERCENTAGE
OF ESTIMATED MARKET VALUE OF TAXABLE PROPERTY

Fairfax County, FY1970 to FY1981

Fiscal Year Ending June 30	Estimated Market Value of Taxable Property*	Net Bonded Indebtedness	Percentage of Estimated Market Value of Taxable Property
1970	3,885,800,000	170,626,485	4.39
1971	4,478,900,000	215,461,680	4.81
1972	5,023,200,000	250,072,650	4.98
1973	5,898,900,000	264,713,455	4.49
1974	6,833,600,000	302,885,435	4.43
1975	7,861,200,000	314,825,415	4.00
1976	9,207,900,000	303,945,395	3.30
1977	10,152,200,000	306,865,375	3.02
1978**	11,686,800,000	319,621,525	2.73
1979**	13,294,700,000	341,675,800	2.57
1980**	15,343,200,000	349,293,900	2.28
1981**	18,136,900,000	321,324,500	1.77

*Estimated market value is based on values recorded as of January 1 of the prior fiscal year.

**Beginning January 1, 1977, for FY1978, real estate assessments are 100 percent of market value. Real estate assessments for previous fiscal years were based on 40 percent of the market value.

Sources: County of Fairfax, Virginia, Report on Audit, for FY1962 to FY1967.
Fairfax County Office of Management and Budget,
Amortization Schedule of County Debt.

NET DEBT PER CAPITA
Fairfax County, FY1967 to FY1981

Fiscal Year	Population	Net Debt	Net Debt Per Capita
1967	379,055	\$118,256,850	312
1968	409,267	140,927,620	344
1969	432,482	163,015,140	377
1970	454,275	170,626,485	376
1971	470,600	215,461,680	458
1972	487,600	250,072,650	513
1973	505,700	264,713,455	523
1974	522,200	302,885,435	580
1975	537,200	314,825,415	586
1976	554,500	303,945,395	548
1977	562,800	306,865,375	545
1978	571,000	319,621,525	560
1979	584,200	341,675,800	585
1980	596,901	349,293,900	585
1981	612,600	321,324,500	525

Sources: Fairfax County Office of Research and Statistics.
Fairfax County Office of Management and Budget,
Amortization Schedule of County Debt.

GENERAL GOVERNMENT AND SCHOOL EXPENSES*

(000's)

Fairfax County, FY1972 to FY1981

Fiscal Year	Total General Government Expenditures	General Government	Administration of Justice	Public Safety	Public Welfare	Public Health	Public Works	County Development	Other	Total Schools
1972	\$49,973	\$15,767	\$1,569	\$12,685	\$ 9,910	\$1,965	\$3,252	\$3,289	\$1,536	\$132,311
1973	58,819	17,119	1,880	16,285	11,110	2,135	4,980	3,770	1,540	145,182
1974	67,540	18,732	2,462	19,036	12,808	2,827	5,243	4,471	1,961	162,128
1975	93,814	27,078	3,300	23,535	15,877	3,828	8,032	5,209	6,955	183,003

Fiscal Year**	Total General Government Expenditures	General Government Administration and Support	Conservation Management and Development of the Community Environment	Personal Development, Rehabilitation and Health Services	Administration of Justice	Public Safety	Total Schools
1976	\$109,341	\$31,845	\$14,834	\$30,537	\$ 5,417	\$26,708	\$213,775
1977	111,940	30,236	15,928	30,758	6,248	28,770	230,716
1978	122,099	34,361	17,079	30,934	7,675	32,050	250,317
1979	138,777	31,794	24,690	36,720	9,356	36,217	274,896
1980	155,522	36,311	25,512	42,364	9,655	41,680	302,770
1981	177,065	42,454	27,779	49,392	10,613	46,827	364,372

*General government expenditures include general fund and all special revenue and special assessment fund expenditures. Operating expenditures do not include debt service or capital expenditures.

**Functions reclassified to program areas in 1976.

Sources: County of Fairfax, Virginia, Annual Financial Report, for FY1972 to FY1981.

PERCENTAGE DISTRIBUTION OF OPERATING EXPENDITURES*

Fairfax County, FY1972 to FY1981

GENERAL GOVERNMENT EXPENSES (Percentages)									
Fiscal Year	Total General Government Expenditures	General Government	Administration of Justice	Public Safety	Public Welfare	Public Health	Public Works	County Development	Other
1972	100.0%	31.6%	3.1%	25.4%	19.8%	3.9%	6.5%	6.6%	3.1%
1973	100.0	29.1	3.2	27.7	18.9	3.6	8.5	6.4	2.6
1974	100.0	27.7	3.7	28.2	19.0	4.2	7.8	6.6	2.9
1975	100.0	28.9	3.5	25.1	16.9	4.1	8.6	5.5	7.4

41-III/A

Fiscal Year**	Total General Government Expenditures	General Government Administration and Support	Conservation Management and Development of the Community Environment	Personal Development, Rehabilitation and Health Services	Administration of Justice	Public Safety
1976	100.0%	29.1%	13.6%	27.9%	5.0%	24.4%
1977	100.0	27.0	14.2	27.5	5.6	25.7
1978	100.0	28.2	14.0	25.3	6.3	26.2
1979	100.0	23.0	17.8	26.4	6.7	26.1
1980	100.0	23.4	16.4	27.2	6.2	26.8
1981	100.0	24.0	15.7	27.9	6.0	26.4

*General government expenditures include general fund and all special revenue and special assessment fund expenditures. Operating expenditures do not include debt service or capital expenditures.

**Functions reclassified to program areas in 1976.

Source: County of Fairfax, Virginia, Annual Financial Report for FY1972 to FY1981.

IX GOVERNMENT SERVICES

SELECTED RESOURCE AND SERVICE INDICATORS BY COUNTY AGENCY

Fairfax County, FY1976 to FY1981

Program Area	Agency and Program	Resource and Service Indicators	Fiscal Year						
			1976	1977	1978	1979	1980	1981	
I-XI General Government Administration	Office of Assessments**								
	Real Estate	Parcels (Locally Assessed, Tax Exempt and Public Service)	171,020	180,311	190,422	199,381	207,606	215,218	
	Personal Property	Tax Returns Received	204,927	215,075	243,326	249,802	269,391	293,914	
	Elderly/Disabled	Real Estate - Applications Approved	1,032	1,055	1,183	1,380	1,368	1,435	
		Real Estate - Relief Granted (in dollars)	544,604	639,645	763,704	910,882	1,037,606	1,225,168	
	Relief Program ¹	Rent Relief - Applications Approved	704	714	777	885	886	918	
		Rent Relief - Relief Granted (in dollars)	192,858	202,661	212,600	239,358	235,818	244,417	
		Office of Human Services							
		Agency on Aging	Senior Outreach Home Visits	*	*	*	*	40	106
			Telephone Contacts	*	*	*	*	909	2,380
			Volunteer Guardianship Referrals	*	*	*	*	12	23
			New Guardians Appointed by Court	*	*	*	*	8	7 ²
			Subsidized Community Service Employment Placements	*	*	10	16	25	25 ²
		Re-Entry Women's Employment Center	Women Enrolled in Career Development Workshop	*	*	*	*	329	451
	Workshops Offered		*	*	*	*	29	52	
	Percent of Workshop-Participants Finding Employment		*	*	*	*	45%	48%	
	Total Served		*	*	*	*	2,125	2,861	

SELECTED RESOURCE AND SERVICE INDICATORS BY COUNTY AGENCY

Fairfax County, FY1976 to FY1981

Program Area	Agency and Program	Resource and Service Indicators	Fiscal Year						
			1976	1977	1978	1979	1980	1981	
General Government Administration (continued)	Office of Human Services (continued)								
	Human Services Information and Referral	Number of Calls Received	*	*	*	*	18,476	21,351	
		Number of Referrals	*	*	*	*	15,847	15,547	
		Number of Follow-up Calls	*	*	*	*	916	1,656	
		Number of Teletype Calls (TTY) Received from Hearing Impaired Residents	*	*	*	*	316	1,732	
		Number of TTY Follow-up Calls	*	*	*	*	88	542	
		Energy Assistance Program (EAP) Persons Served	*	*	*	*	374	323	
		General Services							
		Purchasing ³	Purchase Orders Issued	21,203	20,147	20,978	29,770	30,995	31,120
			Value of Purchase Orders Issued (in millions of dollars)	37.6	39.8	49.4	58.3	70.2	81.2
		Equipment Management Transportation Agency							
		Energy Consumption ⁴	Gasoline - Gallons Used (in thousands)	3,939.9	3,819.9	4,088.5	4,633.0 ⁵	4,673.5 ⁵	4,784.2
			Diesel Fuel - Gallons Used (in thousands)	394.6	374.9	434.7	502.7	511.7	489.7
		Heating Fuel - Gallons Used (in thousands)	7,275.0	7,556.7	7,114.9	8,091.3	9,058.8	7,532.2	

SELECTED RESOURCE AND SERVICE INDICATORS BY COUNTY AGENCY

Fairfax County, FY1976 to FY1981

Program Area	Agency and Program	Resource and Service Indicators	Fiscal Year						
			1976	1977	1978	1979	1980	1981	
IX-1 General Government Administration (continued)	General Services (continued)								
	Vehicle Fleet ⁶	Vehicles in Fleet Maintenance and Operating Cost Per Mile (in cents)	2,414 16.9	2,441 18.6	2,427 20.2	2,463 22.2	2,538 30.0	2,638 36.0	
	Office of Personnel**7	Employees Administered	7,950	8,580	9,111	9,961	10,160	10,699	
		Employees on January 1	6,073	5,998	6,733	6,930	7,512	7,935	
		Terminations	1,952	1,847	2,181	2,461	2,192	2,529	
		Appointments	1,877	2,582	2,378	3,043	2,648	2,764	
		Employees on December 31	5,998	6,733	6,930	7,512	7,968	8,170	
		Paychecks Issued	156,049	150,496	170,305	177,871	187,942	205,700	
		Applications Received	15,590	15,753	23,085	23,993	21,358	31,152	
		Electoral Board and General Registrar	See Page IX-17						
		Data Processing							
		Cooperative Computer Center	Jobs Processed Teleprocessing Transactions (in thousands)	120,314 5,861	137,612 6,404	135,641 7,116	132,558 10,186	135,710 12,142	192,768 15,251
		Office of Research and Statistics	Programmers	27	26	26	24	24	29
			Systems Analysts	9	9	11 ⁸	11	11	15
			Programs	1,970	2,230	2,330	2,440	2,549	2,574
			Systems	33	38	40	42	42	42
			Agencies Supported by Computer Systems	18	18	19	22	22	22

SELECTED RESOURCE AND SERVICE INDICATORS BY COUNTY AGENCY

Fairfax County, FY1976 to FY1981

Program Area	Agency and Program	Resource and Service Indicators	Fiscal Year						
			1976	1977	1978	1979	1980	1981	
General Government Administration (continued)	Office of Research and Statistics (continued)	Requests for Statistical Information	*	1,916	2,173	2,618	2,484	2,633	
		Number of Economic/Demographic Analyses	*	*	16	16	16	13	
		Number of Management Analyses/Evaluations	*	*	28	31	13	19	
Judicial Administration	Circuit Court	Judges	10	10	8	9	9	9	
		Law Cases Commenced	2,757	2,681	2,590	2,933	3,300	3,376	
		Chancery Cases Commenced	3,841	3,943	4,281	4,496	4,694	5,573	
		Criminal Cases Commenced	1,803	2,226	2,797	2,765	3,340	4,797	
	Clerk of the Circuit Court	Staff	54	56	60	64	75	79	
		Wills Admitted to Probate	972	921	1,030	980	887	948	
		Instruments Recorded in Land Records	56,361	66,944	84,937	101,040	99,413	90,957	
		Marriage Licenses Issued	4,318	4,669	4,834	4,957	5,193	5,746	
		Passport Applications Executed	1,541	1,712	1,843	1,773	1,761	1,602	
		Civil Witness Services Processed	*	6,074	7,119	7,255	7,764	9,529	
		Criminal Services Processed	*	6,333	6,504	7,421	7,838	8,875	
		Financing Statements Recorded	*	11,910	13,195	13,005	12,084	9,634	
		Judgment Liens Recorded	*	4,693	4,921	5,246	5,621	7,315	
		Charters Recorded	*	*	4,280	5,632	6,630	7,371	
		Notary Commissions Executed	*	*	*	*	*	1,505	
		Fictitious Names Recorded	*	*	*	*	*	2,317	
		Juvenile and Domestic Relations District Court	Judges	3	3	4	4	4	5
			Professional Staff	51	51	58.5	62.5	69.4	75
	Juvenile Complaints, Nontraffic		4,580	7,002	8,539	9,222	9,301	9,765	
	Juvenile Traffic Complaints		6,654	7,544	7,954	8,686	8,880	7,733	
	Adult Complaints (includes support)		1,915	3,756	3,486	3,770	4,336	4,817	
	Docketed Court Transactions		13,095	23,268	23,616	26,135	25,375	27,315	

4-XI

SELECTED RESOURCE AND SERVICE INDICATORS BY COUNTY AGENCY

Fairfax County, FY1976 to FY1981

Program Area	Agency and Program	Resource and Service Indicators	Fiscal Year					
			1976	1977	1978	1979	1980	1981
IX-5 Judicial Administration (continued)	Juvenile and Domestic Relations District Court (continued)	Juvenile Offenders (excludes traffic)	*	*	5,420	5,792	5,570	5,789
		Adult Offenders	*	*	2,584	2,873	3,200	3,425
		Juvenile Detentions in Detention Home	606	672	486	549	532	553
		Average Stay in Detention Home (in days)	12.6	11.0	13.0	16.8	13.4	16.8
		Juvenile Detentions in Jail	168	126	124	150	158	196
		Average Stay of Juveniles in Jail (in days)	9.2	10.8	12.4	12.3	10.1	11.6
	General District Court	Judges ¹¹	5	6	6	7	7	7
		Criminal Cases	12,534	22,207	27,424	31,635	34,996	37,779
		Traffic Cases	94,750	101,587	110,928	107,773	116,152	111,120
		Civil Cases	23,871	24,982	28,819	34,653	39,801	44,506
		Mental Hearings	984	1,284	1,410	1,633	1,767	1,725
		Mental Hearings per 1,000 Population						
		Falls Church Cases ¹²	*	7,199	7,891	6,471	6,825	9,060
Fairfax City Cases ¹³	*	*	8,527	7,804	8,894	10,458		
Public Safety	Department of Consumer Affairs	Investigations Division						
		Total Requests for Assistance	20,119	22,723	29,226	28,721	29,648	27,509
		Complaints	4,342	3,454	4,295	4,371	4,242	3,659
		Requests for Advice	15,777	19,269	24,931	24,394	25,406	23,850
		Total Requests Resolved	19,369	22,823	29,054	28,666	29,816	27,465
		Value of Complaints at Issue (in dollars)	539,912	313,871	435,807	596,000	564,300	486,100
		Value of Complaints Resolved (in dollars)	255,298	240,653	285,392	423,500	331,700	317,600

SELECTED RESOURCE AND SERVICE INDICATORS BY COUNTY AGENCY

Fairfax County, FY1976 to FY1981

Program Area	Agency and Program	Resource and Service Indicators	Fiscal Year					
			1976	1977	1978	1979	1980	1981
Public Safety (continued)	Police Department (continued)	Index Crimes per 100,000 Population						
		Murder	4.52	2.67	2.24	3.42	1.25	3.12
		Rape	18.07	14.69	16.26	17.09	22.86	20.62
		Robbery	68.17	73.28	84.11	87.41	83.23	96.36
		Aggravated Assault	46.56	54.58	55.70	60.79	50.19	67.24
		Burglary	1,004.72	994.08	1,034.02	916.73	974.64	1,230.33
		Larceny	2,891.16	2,458.21	3,879.81	3,058.63	3,164.49	3,301.56
		Motor Vehicle Theft	348.53	308.40	336.64	306.12	288.99	290.29
		Total Index Crimes	4,381.73	3,905.92	4,408.79	4,450.19	4,585.65	5,009.53
		Clearance Rates of Index Crimes (percent)						
		Murder	100.00	57.14	66.67	89.47	100.00	88.89
		Rape	34.78	36.36	25.29	52.63	42.19	47.90
		Robbery	30.26	21.61	28.44	32.72	32.62	38.49
		Aggravated Assault	45.15	39.86	48.99	56.51	69.04	54.90
		Burglary	13.71	11.36	19.52	31.35	21.20	24.58
		Larceny	6.72	9.95	13.63	16.61	15.02	16.52
		Motor Vehicle Theft	25.20	12.93	26.10	30.20	30.22	35.52
		Total Clearance Rate	10.78	11.31	16.76	21.63	18.36	20.72
		Arrests						
		Part I Offenses (concerning index crimes) Juvenile Arrests	1,012	1,050	1,483	1,362	1,159	1,206
		Part I Offenses (concerning index crimes) Adult Arrests	2,047	1,696	2,360	2,537	2,372	2,895
		Other Criminal Offenses Juvenile Arrests	1,716	1,700	1,491	2,001	1,970	2,089
		Other Criminal Offenses Adult Arrests	9,456	9,823	11,626	13,395	14,061	16,229
		Traffic - All Arrests	49,849	52,743	65,932	57,031	59,795	54,497
		Total Arrests	64,080	67,012	81,892	76,326	79,357	76,916

SELECTED RESOURCE AND SERVICE INDICATORS BY COUNTY AGENCY

Fairfax County, FY1976 to FY1981

Program Area	Agency and Program	Resource and Service Indicators	Fiscal Year					
			1976	1977	1978	1979	1980	1981
Public Safety (continued)	Police Department (continued)	Accidents						
		Fatal	48	47	51	56	51	65
		Personal Injury	2,642	3,092	3,421	3,759	3,572	3,996
		Other	14,226	16,728	17,836	19,603	17,484	17,377
		Total Accidents	16,916	19,867	21,308	23,418	21,107	21,438
	Accidents per 100,000 Population	3,323.28	3,791.41	3,982.80	4,211.87	3,769.11	3,715.42	
	Office of the Sheriff ¹⁶	Prisoners Escorted to Court	*	*	*	*	4,801	11,257
		Prisoners Taken into Custody	*	*	*	*	*	1,073
		Court Services Officers	10	10	11	11	12	13
		Processes Served	92,509	80,831	93,285	105,486	110,492	119,609
		Adult Detention Center						
		Total Prisoners Booked	*	*	12,749	14,664	12,479	17,698
		Average Daily Population	*	*	*	223	248	325.08
		Males	*	*	*	*	229	301.64
		Females	*	*	*	*	11.16	11.44
		Juveniles	*	*	*	*	7.53	12.00
		Prisoner Days	*	*	62,669	87,602	96,522	124,897
		Total Prisoners Transported	*	*	*	2,279	1,722	3,243
		Total Staff	80	86	128	138	152	170
	Fire and Rescue Services ¹⁷	Fire Stations**	25	26	26	28	29	29
		Authorized Staff and Station Personnel	697	703	739	812	875	915
		Fire Vehicles**	144	136	132	129	126 ¹⁸	142 ¹⁸
		Ambulances**	44	45	41	40	33	39
Mobile Intensive Care Units**		0	1	5	6	8	10	
Fire-Related Deaths (citizen)**		13	28	16	6	13	2	
Fire-Related Injuries (citizen)**		74	83	73	74	86	70	
Building Fires**		924	1,023	929	927	1,011	904	

SELECTED RESOURCE AND SERVICE INDICATORS BY COUNTY AGENCY

Fairfax County, FY1976 to FY1981

Program Area	Agency and Program	Resource and Service Indicators	Fiscal Year						
			1976	1977	1978	1979	1980	1981	
8-XI Public Safety (continued)	Fire and Rescue Services (continued)	Outside Fires**	2,365	2,365	1,958	1,615	1,089	2,564	
		Vehicle Fires**	891	1,058	997	1,042	1,093	1,047	
		Ambulance Calls**	27,531	29,237	33,426	39,133	43,489	43,989	
		Average Emergency Fire Apparatus Response Time (in minutes)	*	*	4.8	4.9	4.9	4.9	
		Average Emergency Medical Apparatus Response Time (in minutes)	*	*	4.5	4.6	*	*	
		Basic Life Support Unit	*	*	*	*	*	5.27	
		Advanced Life Support Unit	*	*	*	*	*	6.35	
		Value of Fire Loss (in thousands of dollars)**	5,733	8,339	10,180	6,758	7,867	8,432	
		Inspections	17,996	13,640	14,592	14,659	16,401	17,307	
		Plan Reviews	3,159	3,295	4,321	4,991	6,173	5,654	
		Department of Animal Control	Animal Wardens	10	16	16	17	17	17
			Animal Caretakers	10	10	10	10	10	10
			Dog Licenses Sold	27,414	25,342	26,094	22,339	21,505	18,800
	Citizen Complaints Responded To		11,188	13,699	16,770	15,393	15,835	15,826	
	Reported Bite Cases		1,614	1,495	1,251	1,187	1,203	1,100	
	Animals Impounded		11,576	12,421	13,164	14,077	13,547	13,213	
	Stray Animals Redeemed		2,552	2,849	2,936	2,838	2,971	3,452	
	Animals Adopted		2,908	3,160	3,232	3,138	3,189	3,344	
	Injury Cases Responded To		459	595	982	992	1,146	955	
	Summons Issued by Wardens		1,198	1,680	2,900	2,271	1,653	1,726	
	Warnings Issued by Wardens	1,855	2,113	2,561	2,258	2,165	1,615		
	Public Works	Department of Public Works	Wastewater Flow Treated (millions of gallons per day) in County Facilities	37.22	34.37	35.93	34.93	35.80	27.175
			Additional Dwelling Units Added to System	2,911	3,728	5,643	7,066	8,922	7,421

SELECTED RESOURCE AND SERVICE INDICATORS BY COUNTY AGENCY

Fairfax County, FY1976 to FY1981

Program Area	Agency and Program	Resource and Service Indicators	Fiscal Year					
			1976	1977	1978	1979	1980	1981
6-XI Public Works (continued)	Department of Public Works (continued)	Total Miles of Sewer in System	1,676.55	1,707.30	1,754.32	1,866.69	1,936.06	2,031.40
		Average Number of Units Served Per Day by County Collection	6,400	6,400	6,500	6,700	6,700	6,826
		Thousand Tons of Refuse Disposed at County Landfill 1-66	261.2	265.6	290.4	308.9	327.0	342.2
		Sewerage Pumping Stations Operating	29	33	34	36	37	40
		Interjurisdictional Flow Meters Operating	42	51	54	54	56	54
		Rain Gauges Operating	18	18	24	26	24	28
		Sewer Service Trouble Calls Investigated	950	922	1,055	1,028	922	1,102
		VDH&T Annual Paving Program	1,287	1,448	1,663	4,615	1,994	4,034
		Manhole Adjustments						
		Thousand Tons of Sludge Disposed in County Facilities	95.6	92.8	108.1	130.6	155.8	176.6
		Sewer Taps Purchased: Net Equivalent Single Family Residents	3,281	7,895	7,582	10,001	5,793	6,659
		Quarterly Sewer Bills	407,709	425,953	445,436	467,351	498,967	524,516
		Thousand Tons of Refuse Disposed at 1-95 Landfill (Fairfax County Only)	168.7	153.6	127.2	133.1	157.8	155.1
Number of Private Refuse Collectors Licensed	114	114	111	101	97	94		
Health and Welfare	Department of Social Services ²⁰	Applications for Assistance Received	14,609	15,437	16,254	19,681	27,874	33,140
		Applications for Assistance Processed	13,877	15,639	16,188	19,562	27,817	33,654
		Assistance Cases Closed	10,091	11,592	11,314	13,340	17,720	24,547
		Average Number of Cases Receiving Assistance per Month	8,927	11,492	11,872	12,855	16,076	19,309
		Assistance Programs						
		Aid to Cuban and/or Indo-Chinese Refugees ²¹						
		Persons	119	182	183	284	598	1,138
		Dollars	293,037	566,657	574,512	999,084	1,941,966	3,763,505

SELECTED RESOURCE AND SERVICE INDICATORS BY COUNTY AGENCY

Fairfax County, FY1976 to FY1981

01-XI

Program Area	Agency and Program	Resource and Service Indicators	Fiscal Year						
			1976	1977	1978	1979	1980	1981	
Health and Welfare (continued)	Department of Social Services ²⁰ (continued)	Aid to Disabled							
		Persons	28	24	18	11	8	12	
		Dollars	64,735	10,371	11,899	19,577	20,677	29,715	
		Aid to Aged							
		Persons	31	21	14	10	10	9	
		Dollars	75,163	16,272	5,455	14,104	20,042	62,098	
		Aid to Blind							
		Persons	2	2	1	1	0	0	
		Dollars	1,048	1,048	644	267	0	0	
		Foster Care							
		Persons	266	226	247	297	282	237	
		Dollars	1,121,875	605,853	655,894	642,483	788,254	567,513	
		ADC Foster Care ²¹							
		Persons	552	113	97	26	9	14	
		Dollars	730,498	248,366	214,075	38,712	23,039	13,270	
		Work Incentive Child Care ²²							
		Persons	38	25	28	18	11	14	
		Dollars	41,002	21,910	33,583	17,076	19,728	18,546	
		Aid to Dependent Children ^{23, 24, & 25}							
		DSS-Issued Payments							
Families	*	2,162	117	130	175	202			
Thousands of Dollars	6,380	4,839	719	959	1,115	1,257			
State-Issued Payments									
Families	*	*	2,114	2,098	2,260	2,466			
Thousands of Dollars	*	*	6,469	6,999	7,658	8,823			
General Relief ²³									
Families	*	574	498	661	649	726			
Thousands of Dollars ^{21 & 23}	1,007	1,053	1,139	1,495	1,672	1,971			
Emergency Assistance									
Families	35	7	2	1	1	1			
Dollars	144,882	22,313	5,780	2,470	533	800			
Tenant Deposits									
Families	234	233	220	244	224	178			
Dollars	33,485	35,971	31,311	42,902	45,690	32,625			

SELECTED RESOURCE AND SERVICE INDICATORS BY COUNTY AGENCY

Fairfax County, FY1976 to FY1981

Program Area	Agency and Program	Resource and Service Indicators	Fiscal Year						
			1976	1977	1978	1979	1980	1981	
Health and Welfare (continued)	Department Social Services ²⁰ (continued)	State/Local Hospitalization							
		Patient Days	5,160	3,072	3,660	3,108	3,814	4,382	
		Dollars	539,000	418,776	561,818	587,241	750,169	940,657	
		Title XX Purchased Services ²⁵							
	Persons	23	3,094	3,130	2,458	2,419	2,423		
	Thousands of Dollars	86	2,463	2,981	3,189	2,950	2,853		
	Office for Children	State Licensed Child Care Centers	54	59	68	74	79	84	
		Licensed Capacity of Fairfax City Child Care Centers	3,780	4,151	5,082	5,924	6,125	6,235	
		Children Receiving County Subsidy for Child Care (Child-Care Years)	*	217	210	219	270	313	
		School-Age Child Care Centers in Elementary Schools (Before and After School Hours)	*	*	11	16	21	26	
		Children Enrolled in School-Age Child Care	*	*	450	530	600	774	
		Private Home Child Care Providers Trained by the Office for Children	83	100	110	110	91	86	
		Child Care Information and Referral Requests Answered	*	*	*	*	1,576	6,000	
		Technical Assistance Visits and Consultations	*	*	*	*	*	300	
		Health Department	Total Number of Public Health Clinics Held	2,403	2,395	2,814	2,536	3,601	3,822
			Persons Attending Public Health Clinics	36,997	36,368	45,664	44,430	65,468	63,897
	Dental Patient Visits		9,804	8,391	6,462	6,154	5,918	5,847	
	Laboratory Analyses Completed		103,918	114,863	117,493	130,036	144,607	151,816	
	Total Number of Referrals to the Annandale Elderly Day Care Center (AEDCC)		*	*	*	*	99	125	

SELECTED RESOURCE AND SERVICE INDICATORS BY COUNTY AGENCY

Fairfax County, FY1976 to FY1981

Program Area	Agency and Program	Resource and Service Indicators	Fiscal Year						
			1976	1977	1978	1979	1980	1981	
Health and Welfare (continued)	Health Department (continued)	Average Number of Participants Served Per Month at AEDCC	*	*	*	*	25	37	
		Home Health Patients Served	*	360	432	463	532	634	
		Total Visits Provided to Home Health Patients	*	*	*	13,131	15,722	20,384	
		Environmental Health Section Activities Total Visits ²⁶	59,544	59,990	59,451	61,907	55,398	52,825	
IX-12 Parks, Recreation and Cultural	Department of Recreation and Community Services	Summer Neighborhood (Playgrounds) Centers	114	113	110	104	109	115	
		Attendance	200,808	168,337	168,766	148,389	159,142	142,370	
		Community Centers	19	20	21	21	22	22	
		Average Daily Attendance	48.2	56.8	75.0	104.6	104.1	104.8	
		Senior Citizen Organizations Members (estimate) ²⁷	49	52	55	78	78	81	
		Senior Citizen Multiservice Centers	4,000	4,500	4,500	6,000	6,000	6,000	
		Meals Served	2	3	4	4	5	6	
		Recreational Classes Offered	12,785	19,568	27,035	33,070	42,748	56,695	
		Number of Students Enrolled	3,648	3,449	3,300	3,159	3,198	3,040	
		Gymnasium and Ballfield Applications Processed	34,573	33,070	30,471	29,696	28,515	23,585	
			*	*	*	2,216	2,497	2,448	
		Library	Libraries	17	17	17	17	17	18
			Bookmobiles	3	2	2	2	2	2
			Circulation (in thousands) ²⁸	5,017	4,952	5,064	4,956	5,080	5,334
			Hard Back Books (in thousands)	1,245	1,321	1,321	1,411	1,426	1,429
			Information Questions	1,278	1,536	1,607	1,569	1,661	1,887
			Library Sponsored Programs	*	*	1,947	2,875	3,222	3,674
Attendance at Library Sponsored Programs	*		*	42,256	67,075	72,873	82,176		
Number of Volunteer Hours	*		*	*	8,740	14,934	22,686		

SELECTED RESOURCE AND SERVICE INDICATORS BY COUNTY AGENCY

Fairfax County, FY1976 to FY1981

Program Area	Agency and Program	Resource and Service Indicators	Fiscal Year						
			1976	1977	1978	1979	1980	1981	
IX-13 Community Development	Department of ¹⁵ Environmental Management								
	Design Review Division	Site Improvement Plans Approved	1,821	2,303	2,915	3,646	2,740	2,723	
		Structural Plans Processed	*	2,058	2,953	3,266	2,579	2,773	
	Office of Comprehensive Planning	Nominations for Annual Plan Review	91	246	143 ²⁹	252	104	131	
		Rezoning Applications	91	129	142	172	132	115	
		Special Exception Applications	26	15	147	104	153	120	
		Board of Zoning Appeals Applications	314	324	340	312	368	362	
		Number of Capital Improvement Project Submissions	*	*	550	553	547	542	
		Number of Environmental Reviews	295	195	245	250	225	*	
	Housing and Community Development	See Page VI-24							
	Human Rights Commission	Number of Staff	3	4	7	7	8	8	
		Number of Formal Complaints ³⁰	83	83	101	153	172	176	
		Formal Complaints Resolved ³⁰	55	55	74	106	99	101	
		Number of Informal Complaints ³¹	43	59	523	550	630	630	
		Number of Educational Presentations	0	10	10	25	35	50	
Department of Extension and Continuing Education	Assistance Rendered (Number of Cases)	686,853	830,584	1,275,424	1,325,565	1,285,450	1,520,199		
	Educational Programs Presented	1,130	1,273	3,880	1,494	1,410	1,837		

SELECTED RESOURCE AND SERVICE INDICATORS BY COUNTY AGENCY

Fairfax County, FY1976 to FY1981

Program Area	Agency and Program	Resource and Service Indicators	Fiscal Year					
			1976	1977	1978	1979	1980	1981
Community Development (continued)	Health Department	Air Pollution Control						
		Ambient Air Samples Required for Data Bank	305,649	308,176	311,514	323,876	315,148	304,000
		Data Collection Visits	2,716	2,719	2,782	2,775	2,815	3,115
		Number of Source Inspections and Investigations	1,930	1,918	1,926	1,920	1,916	1,880
		Complaints Investigated	633	611	601	600	680	680

IX-14

*Data are not available.

**Data are for calendar years.

SELECTED RESOURCE AND SERVICE INDICATORS BY COUNTY AGENCY

Fairfax County, FY1975 to FY1980

NOTES

- ¹ 1978 is the first full operating year of the Disability Relief Program.
- ² Includes one unsubsidized placement.
- ³ Data include purchasing information for the Fairfax County Administration, Public Schools, and Park Authority.
- ⁴ Data include energy management information for the Fairfax County Administration, Public Schools, Park Authority, and Water Authority.
- ⁵ Data for FY1979 and thereafter reflect fuel purchases rather than usage.
- ⁶ Data include fleet information for the Fairfax County Administration and Public Schools.
- ⁷ Data include information on both full-time and part-time employment.
- ⁸ Data reflect the reclassification of a Management Analyst and a Programmer position in 1978, not an increase in agency personnel.
- ⁹ The Juvenile and Domestic Relations District Court began hearing traffic cases in FY1977.
- ¹⁰ The Juvenile Detention Home operated with diminished capacity due to repairs, August to October 1977.
- ¹¹ A seventh judge was added to the General District Court in April 1978.
- ¹² A Fairfax County judge sits in Falls Church to hear city criminal, traffic, and civil cases.
- ¹³ A Fairfax County judge sits in Fairfax City to hear city criminal and traffic cases.
- ¹⁴ Transferred to Department of Consumer Affairs from Police Department in December 1981, and includes licensing for taxicab drivers, solicitors and peddlers, gun dealers, precious metals and gem dealers, massage establishments and technicians.
- ¹⁵ Data indicates new land development in Fairfax County.
- ¹⁶ All data are as of June of each year.
- ¹⁷ Fairfax City separated from the Fairfax County Fire and Rescue Services system in May 1978.
- ¹⁸ Represents vehicles used in suppression only.
- ¹⁹ Format for reporting Emergency Medical Apparatus Changed in 1981.
- ²⁰ Includes the Cities of Fairfax and Falls Church.
- ²¹ Expenditures are paid by Federal/State funds.
- ²² Ninety percent or more of the expenditures are paid by Federal/State funds.
- ²³ Data represent average number of families assisted per month.
- ²⁴ After April 1, 1977, ongoing ADC payments were assumed by the State and are no longer reflected in Fairfax County Department of Social Services ADC expenditures.
- ²⁵ Seventy-five percent or more of the expenditures are paid by Federal/State funds.
- ²⁶ Includes consumer services, environmental services, housing and vector control, and special services.
- ²⁷ Data include national senior citizen organizations beginning May 1979.
- ²⁸ Data represent books, (including paperbacks), art (paintings, sculpture, et cetera), records, cassettes, films, puppets, magazines, and audio-visual equipment.
- ²⁹ Limited review year, under the three-year cycle policy established in 1979. The years 1980 and 1981 are designated "limited review years," followed by a "full review" in 1982.
- ³⁰ Formal complaints are those which have been assigned a Human Rights Commission case number.
- ³¹ Informal complaints have been investigated by the Human Rights Commission, but have not been assigned case numbers because the agency cannot provide further assistance; a case of discrimination does not exist; or case is out of agency's jurisdiction.

SELECTED RESOURCE AND SERVICE INDICATORS FOR

THE OFFICE FOR CHILDREN

Fairfax County, FY1974 and FY1980

Resource and Service Indicators	Fiscal Year		Change 1974-1980
	1974	1980	
Licensed Day Care Centers	52	79	27
Children Enrolled in Day Care Centers	3,000	6,000	3,000
Children Receiving County Subsidy for Day Care	161	270	109
Extended Day Care Centers in Elementary Schools (Before and After School Hours)	0	21	21
Children Enrolled in Extended Day Care	0	600	600
Private Home Day Care Providers Trained by the Office for Children	0	147	147
Day Care Centers Receiving Technical Assistance from the Office for Children	8	65	57

Source: Fairfax County Office for Children.

VOTER REGISTRATION AND ELECTION INFORMATION

Fairfax County, 1968 to 1981

Year	Number of Registered Voters as of November	Number Voting in General Election	Voter Turnout (Percent)
1968	137,729	117,939	85.6%
1969*	127,107	69,359	54.6
1970	134,017	89,773	66.9
1971	144,744	73,649	50.9
1972	208,945	172,601	82.6
1973*	197,761	98,332	49.7
1974**	206,119	116,858	56.7
1975	213,952	90,426	42.3
1976	262,613	207,016	78.8
1977	244,122	128,733	52.7
1978	249,699	137,861	55.2
1979	244,969	103,475	42.4
1980	298,171	241,112	80.86
1981	283,215	166,972	58.95

*Registration Books were purged in 1969 and 1973.

**Effective December 31, 1974, and annually thereafter, the name of any registered voter who has not voted at least once during four consecutive calendar years is removed from the voter registration records.

Source: Fairfax County Office of the Electoral Board and General Registrar.

ELECTION SCHEDULE

Fairfax County, 1982 - 1994

Elected Officials	Term	Last Elected	1982	1983	1984	1985	1986	1987	1988	1989	1990	1991	1992	1993	1994
<u>Fairfax County</u>															
Board of Supervisors	4 years	1979		■				■				■			
Commonwealth's Attorney	4 years	1979		■				■				■			
Sheriff	4 years	1979		■				■				■			
Clerk of the Court	8 years	1975		■								■			
<u>Commonwealth of Virginia</u>															
Governor (cannot serve two successive terms)	4 years	1981				■			■				■		
Lt. Governor	4 years	1981				■			■				■		
Attorney General	4 years	1981				■			■				■		
State Senators	4 years	1979		■				■				■			
Members of House of Delegates	2 years	1981*	■	■		■		■		■		■		■	
<u>United States</u>															
President and Vice President	4 years	1980			■			■				■			
United States Senators (staggered terms)	6 years	1976 1978	■	■				■		■			■		■
Congressmen (members of House of Representatives)	2 years	1978	■	■			■		■			■		■	
<u>Other</u>															
Soil and Water Conservation Director--Northern Virginia District	3 years	1981			■			■			■			■	
<u>Town Elections</u>															
<u>Clifton</u>															
Mayor and 3 Councilmen	2 years	1980	■		■		■		■		■		■		■
<u>Herndon</u>															
Mayor and 6 Councilmen	2 years	1980	■		■		■		■		■		■		■
<u>Vienna</u>															
Mayor and 3 Councilmen	2 years	1980	■		■		■		■		■		■		■
3 Councilmen	2 years	1981		■		■		■		■		■		■	

*Court-ordered one-year term as a result of reapportionment.

Note: Primary elections are held on the second Tuesday in June.
General elections are held on the Tuesday after the first Monday in November.

Source: Fairfax County Office of the Electoral Board and General Registrar.

COMMUNITY HOSPITALS INPATIENT UTILIZATION

Fairfax County, 1981

Hospital	Number of Beds		Admissions		Average Daily Occupancy		Average Length of Stay (Days)
	Licensed	Operating	Number	Percent	Beds Occupied	Percent of Occupancy (Operating Beds)	
Commonwealth Doctors	160	105	5,896	13.4%	103.0	98.1%	6.3
Fairfax	656	646	32,263	73.1	556.0	86.1	6.3
Mount Vernon	237	150	5,971	13.5	146.0	97.3	8.9
County Total	1,053	901	44,130	100.0%	805.0		7.2

Source: Fairfax Hospital Association, Office of Planning

MILES OF ROADWAY

Fairfax County, 1981

Roadway Type	Miles	
	Number	Percent
Interstate	52.59	2.6%
Primary	137.93	6.7
Secondary	<u>1,860.38</u>	<u>90.7</u>
Total Roadway	2,050.90	100.0%

Source: Virginia Department of Highways and Transportation, Road Mileage Tables.

METROPOLITAN WASHINGTON AIRPORT ACTIVITY

1978*, 1979*, 1980**, and 1981**

Activity	Dulles International Airport				Washington National Airport			
	1978	1979	1980	1981	1978	1979	1980	1981
<u>Flights**</u> (Arrivals and Departures)	177,121	172,974	165,420	155,348	352,044	352,904	352,166	337,132
<u>Passengers</u>								
Domestic Scheduled	2,324,637	2,692,626	1,950,148	1,748,705	13,249,900	14,277,825	13,570,421	13,091,156
Domestic Nonscheduled	17,438	14,067	2,797	6,754	0	0	0	0
International Scheduled	564,864	575,683	474,432	374,259	0	0	0	0
International Nonscheduled	56,567	29,589	7,252	3,090	0	0	0	0
Air Taxi (Commuter Airlines)	12,325	26,587	22,415	28,598	489,603	632,587	723,930	779,297
General Aviation	125,076	124,298	110,854	104,499	209,636	223,614	244,095	304,605
Military	43,693	62,204	56,495	58,680	0	0	0	0
Total Passengers	3,144,600	3,525,054	2,624,393	2,324,585	13,949,139	15,134,026	14,538,446	14,175,058
<u>Cargo (000 lbs.)</u>								
Mail - Domestic	37,980	41,617	40,443	34,576	96,247	97,939	105,548	100,828
Mail - International	6,016	6,517	6,946	5,155	0	0	0	0
Freight - Domestic	39,336	38,895	25,787	25,967	86,282	75,848	56,373	44,495
Freight - International	36,332	33,916	28,951	26,870	0	0	0	0
Total Cargo	119,664	120,945	102,127	52,837	182,529	173,787	161,921	145,323

*Data for 1978 and 1979 reflect twelve month period from October through September.

**Data for 1980 and 1981 reflect calendar year.

Source: Federal Aviation Administration.

X GLOSSARY

GLOSSARY OF TERMS

ADJUSTED GROSS INCOME is reported on State of Virginia Income Tax Returns. It includes gross income from all sources (not specifically excluded) minus certain deductions. Examples of major sources of income that are excluded include Social Security benefits and employer contributions for private pension and health programs. The data cover all people required to file a return and include persons with incomes below filing requirements who were subject to tax withholding and claimed a refund.

ASSESSED VALUE refers to the estimated value of property for use in taxation.

AT-PLACE EMPLOYMENT refers to jobs that are filled and are located within a particular area.

AVERAGE HOUSEHOLD SIZE refers to the number of persons residing within a household. It is computed by dividing the total population in households by the total number of households.

BIRTH RATE refers to the number of births per 1,000 persons in the population.

CALENDAR YEAR refers to a one-year period beginning on January 1 and ending on December 31.

CONSUMER PRICE INDEX (CPI) is a concept developed by the U.S. Bureau of Labor Statistics. It is used to measure average changes in prices of goods and services usually purchased by urban wage earners and clerical workers from a designated reference date (1967, which equals 100.0). A CPI of 195.2 means that prices for that good or service has increased by 95.2 percent since 1967.

DEATH RATE refers to the number of deaths per 1,000 persons in the population.

DEPOSITS are monies held within both checking and savings accounts.

DEVELOPMENT PIPELINE refers to the entire land development process and includes the rezoning of land, site plan submission and review, the issuance of building permits, and the construction of the physical structures.

DISPOSABLE PERSONAL INCOME consists of personal income minus personal taxes (Federal, State, and local), nontax payments (such as fines, fees, and penalties), and personal contributions to social insurance. Generally, it is equivalent to "effective buying income."

EFFECTIVE BUYING INCOME is a concept developed by Sales and Marketing Management. It consists of personal income minus personal taxes (Federal, State, and local), nontax payments (such as fines, fees, and penalties), personal contributions to social insurance, and compensation paid to military and diplomatic personnel stationed overseas. Generally, it is equivalent to "disposable personal income."

EFFECTIVE INTEREST RATE is the contract interest rate and additional fee (such as points) assumed by the buyer at the time of purchase amortized throughout the projected life of the loan.

Glossary of Terms (continued)
Page 2

EMPLOYED persons are civilians in the labor force 16 years old and over who are employed.

A FAMILY consists of a household head and one or more persons living in the same household who are related to the head by blood, marriage, or legal adoption.

FAMILY BUDGET LEVEL represents the costs of three hypothetical lists of goods and services that were specified to portray three relative standards of living -- described as lower, intermediate, and higher -- and does not represent how families actually do or should spend their money.

FAMILY INCOME is a concept developed by the U.S. Bureau of the Census. It refers to the combined gross money income of all members of a family.

A FINANCIAL INSTITUTION is any business which accepts money deposits. Included are savings and loan associations and credit unions (known as thrift institutions) and commercial banks.

FISCAL YEAR refers to a one-year period beginning on July 1 and ending on June 30 of the year cited.

FORECASTS are projections tempered by policy estimates (i.e., reconciliation of past and current trends with current and future policy).

GEOGRAPHIC MOBILITY refers to the movement of the head of household, comparing his or her place of residence during different time periods.

GROSS FLOOR AREA is the area within the perimeter of the outside walls of a building taking into account the number of stories contained in the structure. Space used for interior features such as stairwells and elevator shafts is included in the gross floor area.

A HOUSEHOLD includes all persons who occupy a single housing unit. A household may be comprised of one or more families, one or more unrelated individuals, or a combination of families and unrelated individuals.

HOUSEHOLDER refers to the individual in whose name the home is owned or rented; or any household adult member over 15 if the owner or renter is not present. At any given time, only one person may be considered as the householder, although the home may be jointly owned or rented.

ILLEGITIMATE BIRTHS are births of infants whose mothers were not married to their fathers at the time of birth or any time during the preceding ten months.

INFANT DEATHS are deaths of children under one year of age.

LABOR FORCE includes all persons 16 years old and over who are either employed or unemployed but actively looking for work and are available to accept employment, plus the members of the Armed Forces.

MEDIAN refers to the value which divides a distribution into two equal parts, one half having values above the median, and half having values below this level.

MONEY INCOME is a concept developed by the U.S. Bureau of the Census. It is the amount of income before deductions for personal income taxes, Social Security, bond purchases, union dues, medicare deductions, et cetera. Excluded is money received for the sale of personal property, capital gains, imputed and in-kind income, gifts and inheritances, and other types of lump-sum receipts. Money income is similar to personal income except money income excludes imputed and in-kind income.

NATURAL INCREASE is defined as the total births minus the total deaths.

NET DEBT is the difference between total long-term indebtedness and self-supporting debt. Net debt is paid from the general funds.

NET IN-MIGRATION is defined as the excess of people moving into an area over people moving out of the area.

PER CAPITA INCOME is the average amount of total personal income available to each person residing within an area. It is computed by dividing the total personal income earned by residents within an area by the total population within the area.

PERSONAL INCOME is a concept developed by the U.S. Bureau of Economic Analysis. It is a broader income concept than adjusted gross income or money income. Personal income consists of wage and salary disbursements, proprietor's income, net rental income, dividends, personal interest income, and transfer payments (such as pensions and welfare assistance). It includes wages and salaries paid in-kind, the net rental value of owner-occupied houses, the net value of food and fuel produced on farms, and imputed interest received by persons from financial intermediaries. Capital gains are not included because they are not attributable to current economic activity.

POVERTY THRESHOLDS are based on the Social Security Administration's definition of the minimum income that allows for a nutritionally adequate diet and adequate housing. It allows for differences in the size and composition of families and for differences in the cost of living between farm and nonfarm families. The poverty income cutoffs are revised annually to allow for changes in the cost of living as reflected in the Consumer Price Index.

PREMATURE BIRTHS are babies born after a gestation period of less than 37 weeks weighing 5 pounds, 8 ounces or less.

PRIVATE DEMAND DEPOSITS are monies held within personal checking accounts, usually in commercial banks.

PRIVATE TIME and SAVINGS DEPOSITS are monies held within personal savings accounts.

PROJECTIONS are numbers based upon trend analysis utilizing statistical techniques.

Glossary of Terms (continued)

Page 4

RELATIVE PRICE LEVEL INDICES refer to five categories of costs: food and beverages; housing; apparel and upkeep; transportation; and other goods and services. Each of the five categories comprise a varying number of subcategories. A sample of prices for each individual item is collected for each of eight metropolitan areas. The item prices are combined into subcategory price indicators, the subcategories into category price indicators, and the category into the total indices by using weights adapted from the U.S. Bureau of Labor Statistics weighting procedures developed for a typical urban worker household.

RESIDENT EMPLOYMENT refers to the employment of an area's residents, as compared to at-place employment which refers to the number of persons employed in an area whether or not they reside in the area.

SELF-SUPPORTING DEBT is paid by means of service charges and not from the County general fund. Included in this category are sanitary district bonds and integrated sewer system sewer bonds.

A SHOPPING CENTER is a group of commercial establishments with on-site parking which is planned, developed, owned, and/or managed as a unit and which is related in location, size, and type of shops to the trade area which it serves.

SCHOOL MEMBERSHIP is the sum of all students present and absent from school on a specific date.

TAXABLE SALES reflect deposits of Virginia sales tax revenues, adjusted for the dealer discount, rather than actual sales reported by the dealer.

UNEMPLOYED PERSONS are civilians in the labor force 16 years old and over who do not hold jobs but are actively looking for work and are available to accept employment.

UNEMPLOYMENT RATE is the percentage of the labor force that is unemployed.

URBAN FAMILY BUDGET is a concept developed by the U.S. Bureau of Labor. The costs of three hypothetical lists of goods and services are provided that portray three relative standards of living--described as lower, intermediate, and higher. These costs do not represent how families actually do or should spend their money but how they tend to spend their money.

VACANCY RATE is the percentage of total housing units that are unoccupied.

WASHINGTON SMSA refers to the Washington, D.C., Standard Metropolitan Statistical Area as defined by the U.S. Bureau of the Census. This area includes the District of Columbia; the Maryland Counties of Charles (as of 1973), Montgomery, and Prince George's; the Virginia Cities of Alexandria, Fairfax, Falls Church, Manassas, and Manassas Park; and the Virginia Counties of Fairfax, Arlington, Loudoun, and Prince William.

XI INDEX

INDEX

Page

A

Abortions	II-15
Age Distribution	II-9, II-10
Agricultural Characteristics	VII-18
Airport Activity	IX-21
Animal Control, Department of	IX-8
Assessed Value, Personal Property	VIII-8
Assessed Value, Real Property	VIII-3, VIII-4, VIII-5, VIII-6, VIII-8
Assessed Value, Tax-Exempt Property	VIII-4
Assessments, Office of	IX-1

B

Bank Deposits	VII-15, VII-16, VII-17
Births	II-12, II-13, II-14, II-15
Building Permit Activity	VI-13, VI-14, VII-15
Business Establishments	VII-6, VII-7, VII-8

C

Children, Office for	IX-11, IX-16
Circuit Court	IX-3
Clerk of the Circuit Court	IX-3
Commercial/Industrial Acreage	VII-1
Commuting	V-2, V-14
Comprehensive Planning, Office of	IX-13
Condominiums	VI-15
Construction Activity	VI-13, VI-14, VII-13, VII-14
Consumer Affairs, Department of	IX-5
Consumer Price Index	V-18
Cooperative Computer Center	IX-3
Crime	IX-6

D

Data Processing	IX-3
Deaths	II-15, II-16, II-17, II-18
Design Review Division	IX-13
Divorces	II-21, II-22

E

Education, Per Pupil Cost of	III-6
Education, Years Completed	III-1, III-2
Election Information	IX-17, IX-18
Employment by Industry, Fairfax County	IV-2, VII-11
Employment Forecasts, Region	IV-3

E (Continued)

	<u>Page</u>
Employment, Commuting	V-2, V-14
Employment, Fairfax County	IV-1, IV-2, V-14
Employment, Federal Civilian	IV-7, IV-8
Employment, Occupation	IV-5
Employment, Region	IV-4, IV-6, IV-9
Employment, Total	IV-1
Environmental Management, Department of	IX-13
Extension and Continuing Education, Department of	IX-13

F

Family Budgets	V-15, V-16
Fire and Rescue Services	IX-7, IX-8

G

General District Court	IX-5
General Services	IX-2, IX-3
Geographic Mobility	II-31
Government Expenses	VIII-13, VIII-14
Gross Floor Area	VII-4

H

Handicapped, Receiving Special Education	III-9
Health Department	IX-11, IX-12, IX-14
Hospitals	IX-19
Household Forecasts, Region	II-27
Household Population	II-23
Household Relationships	II-28, II-29
Household Size, Fairfax County	II-25, VI-5
Household Size, Region	II-23, II-24
Households, Fairfax County	II-25
Households, Region	II-23, II-26, VI-3
Housing, Assisted	VI-24
Housing, Construction Activity	VI-12, VI-13, VI-14
Housing, Inventory - Fairfax County	VI-1, VI-2, VI-5
Housing, Region	VI-3
Housing, Rent	VI-17, VI-18, VI-19, VI-20
Housing, Rental	VI-16
Housing, Sales	VI-6, VI-7
Housing, Structure Type	VI-2, VI-6, VI-7, VI-9, VI-23
Housing Units, Tenure	VI-4
Housing, Vacancy Rate	VI-3, VI-21, VI-22, VI-23
Housing, Value	VI-8, VI-9, VI-10, VI-11
Human Services, Office of	IX-1, IX-2

I

In-Migration	II-30
Income/Rent Ratio	VI-19, VI-20
Income, Adjusted Gross	V-10, V-11, V-12
Income, Effective Buying Income	V-6
Income, Family	V-1, V-2, V-5
Income, Household	V-3, V-4
Income, Money	V-1, V-2, V-3, V-4, V-5, V-13, V-14
Income, Per Capita	V-8, V-9
Income, Personal	V-7, V-8, V-9
Income, Poverty	V-19
Income, Sex of Householder	V-4
Industrial Firms	VII-11, VII-12
Industrial/Commercial Acreage	VII-1
Interest Rates	VI-25, VI-26

J

Juvenile and Domestic Relations District Court	IX-4, IX-5
--	------------

L

Land Area	I-3, I-4, VII-1
Library	IX-12
Licenses, Vehicle	VIII-7, VIII-9
Long-Term Indebtedness	VIII-10

M

Maps	I-1, I-2
Marital Status	II-19
Marriages	II-20, II-22
Mobility, Geographic	II-31

N

Net Debt	VIII-10, VIII-11, VIII-12
Nonresidential Development	VII-13, VIII-14
Nonresidential Structures, Gross Floor Area	VII-4
Nonresidential Structures, Number of	VII-2, VII-3

P

Personnel, Office of	IX-3
Planning Districts, Map	I-2
Planning, Office of Comprehensive	IX-13
Police Department	IX-6, IX-7
Population Densities, Fairfax County	II-4, II-5
Population Estimates, Fairfax County	II-4, II-5
Population Growth, Fairfax County	II-1, II-2, II-3, II-30
Population, Household	II-23

P (Continued)

	<u>Page</u>
Population Growth, Region	II-6
Population Growth, Planning Districts	II-3
Population Projections, Fairfax County	II-1, II-3, II-11
Poverty	V-19
Precipitation	1-7
Price Indices	V-17, V-18
Public Works, Department of	IX-8, IX-9

R

Race, Composition	II-7, II-8
Recreation and Community Services, Department of	IX-12
Research and Statistics, Office of	IX-3, IX-4
Retail Sales	VII-9, VII-10
Revenue Sources of the County	VIII-6, VIII-7
Roadway, Miles of	IX-20

S

Sales, Retail Taxable	VII-9, VII-10
Schools, Membership of	III-3, III-4
Schools, Number of Public	III-5
Schools, Salary of Personnel	III-7, III-8
Self-Supporting Debt	VIII-10
Sex, Composition	II-11
Sex, Employment Status	IV-9
Sex, Labor Force Participation	IV-10
Sheriff, Office of the	IX-7
Shopping Centers	VII-5, VII-6, VII-7
Social Services, Department of	IX-9, IX-10, IX-11
Special Education	III-5, III-9
Square Miles of Land Area	1-3, 1-4
Statistics, Office of Research and	IX-3, IX-4
Supervisor Districts, Map of	1-1

T

Tax Collection	VIII-8
Tax Rates	VIII-1, VIII-2
Temperature	1-5, 1-6

U

Unemployment Rates	IV-11, IV-12
------------------------------	--------------

V

Vacancy Rate	VI-3, VI-21, VI-22, VI-23
Vehicle Licenses	VIII-7, VIII-9
Voter Registration	IX-17

Page

W

Wage Earners in Household V-4, V-13