

RTCN Surrounding Properties

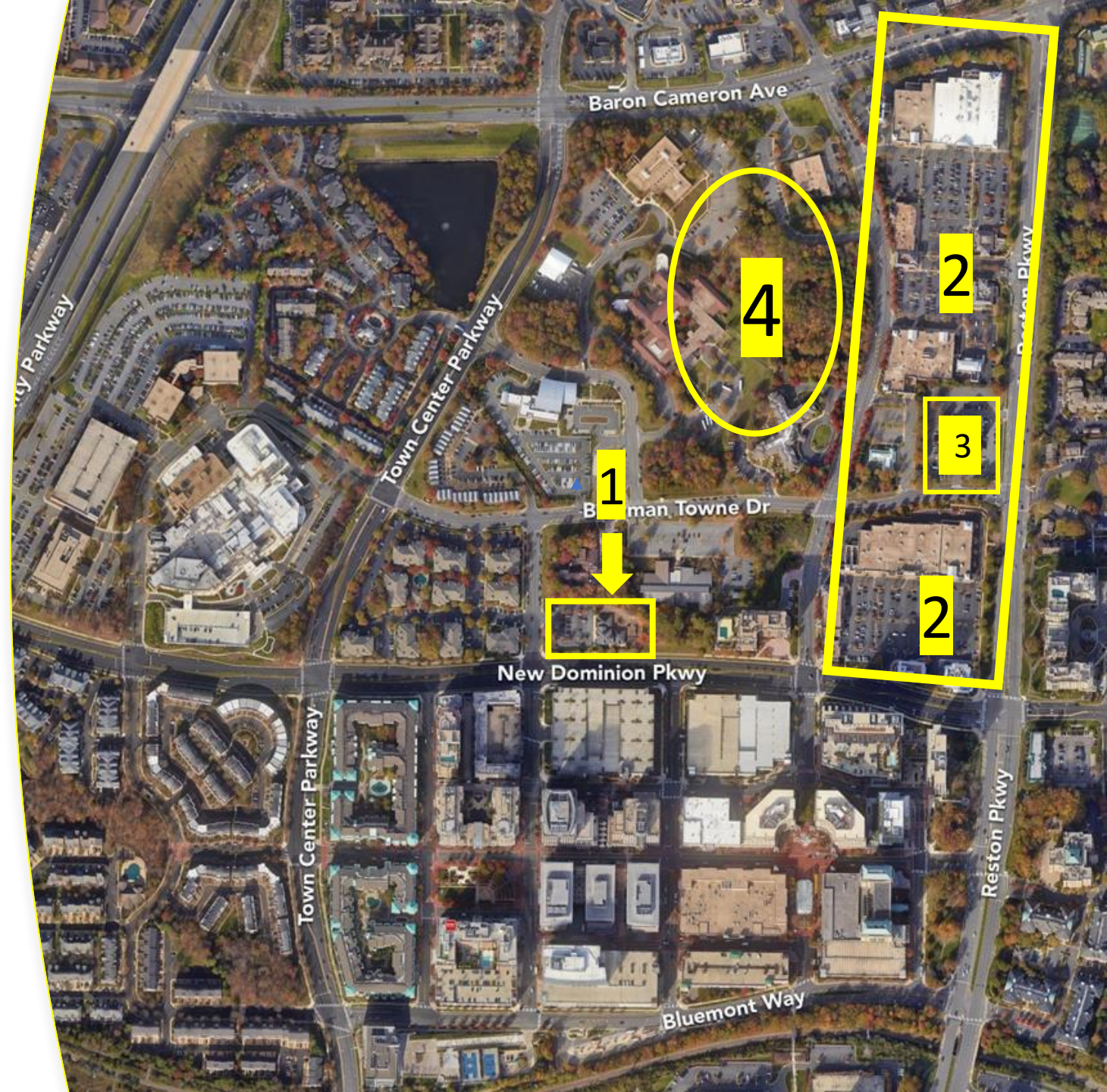
March 6, 2023

Agenda

1. Call to order by Chair Kate Hanley
2. Opening remarks by Supervisor Alcorn
3. Department of Planning and Development: presentation on approved and pending development around RTCN properties
4. Joe LaHait, Department of Management and Budget, discussion on funding public facilities: general funds, bonds, and/or public/private partnerships
5. Next steps
6. Adjourn

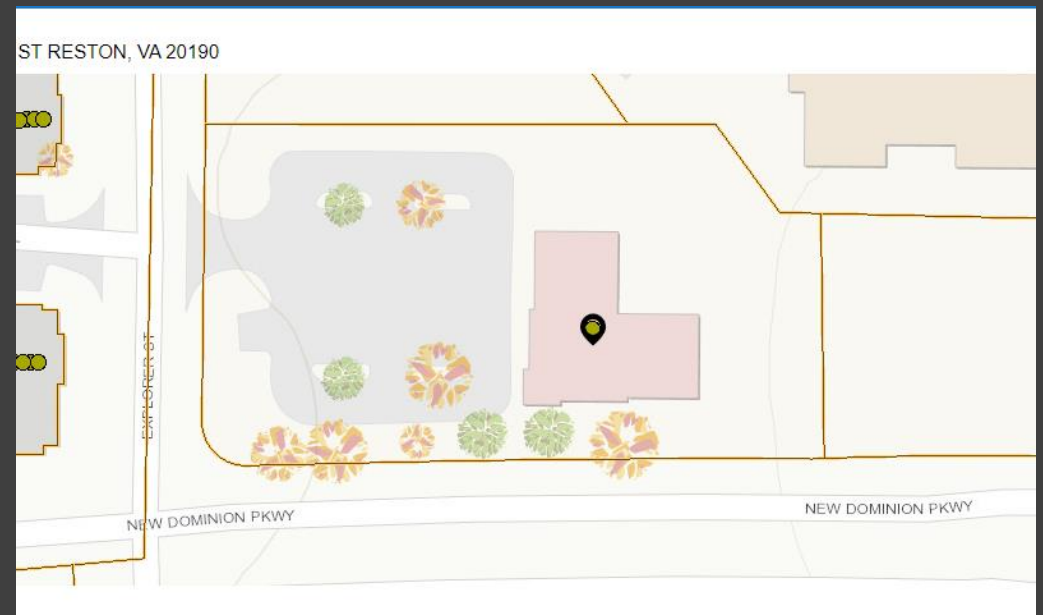
Current Developments Surrounding RTCN

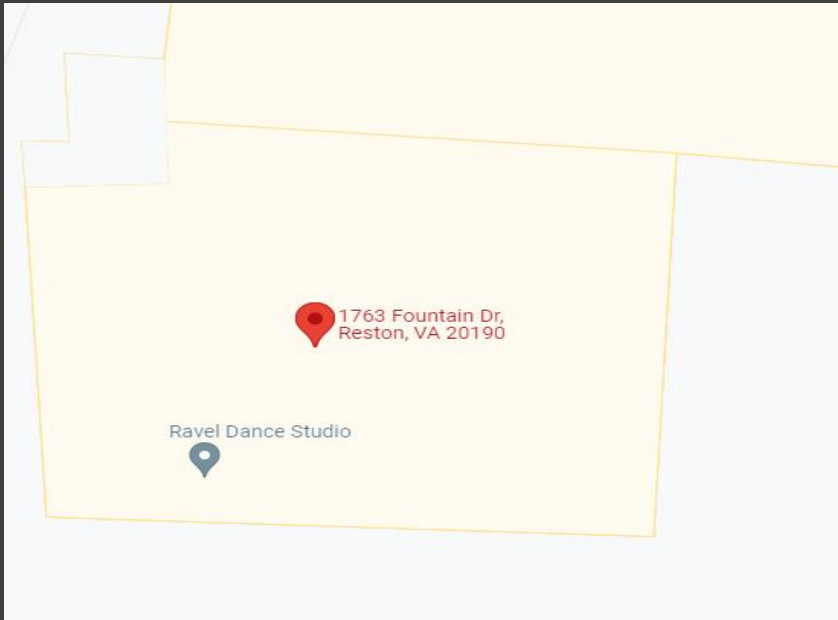
1. Raj Development (Winwood Child Care)
2. Spectrum Lerner & Harris Teeter
3. Ackridge & RTC Partnership
4. Inova



Raj Development: Winwood Children's Center

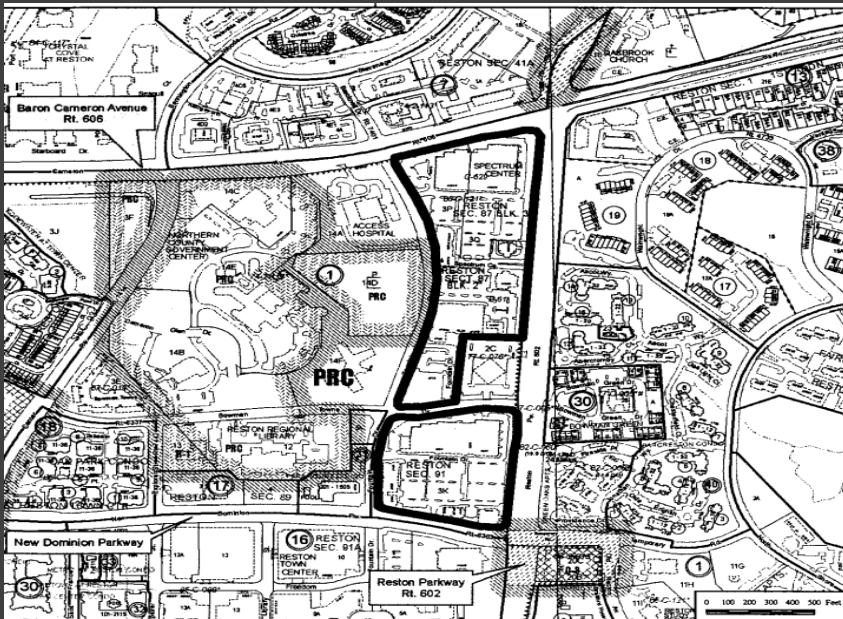
- **Location:** 1841 Explorer St, Reston
- **Timeline:** approval recommended in June 2010
- **Project Summary:** mixed-use and is approved for a mixed-use building consisting of 63,667 square feet of non-residential uses and 125 dwelling units with a maximum height of 180 feet

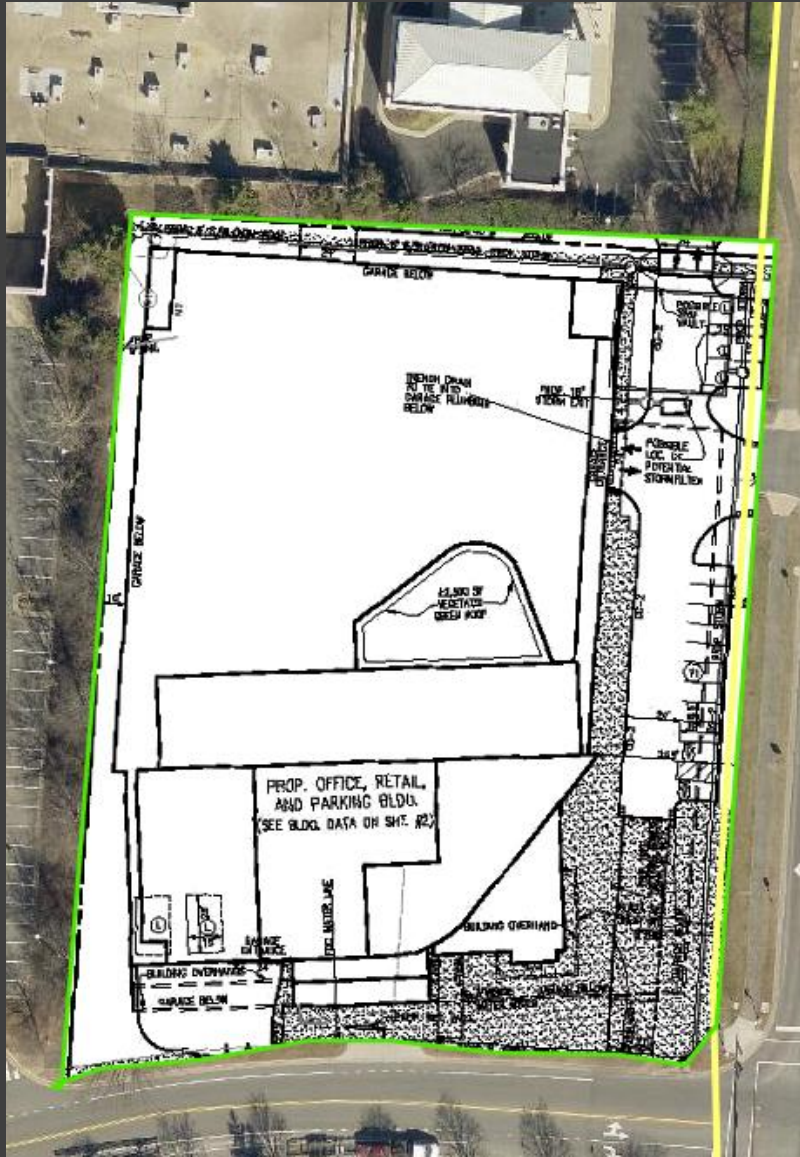




Spectrum/Lerner

- **Location:** 1763 Fountain Drive, Reston
- **Timeline:** Approved by the Board of Supervisors in January 2013.
- **Project Summary:** 24.29-acre site with 774,879 SF of non-residential uses and maximum of 1,422 multifamily units





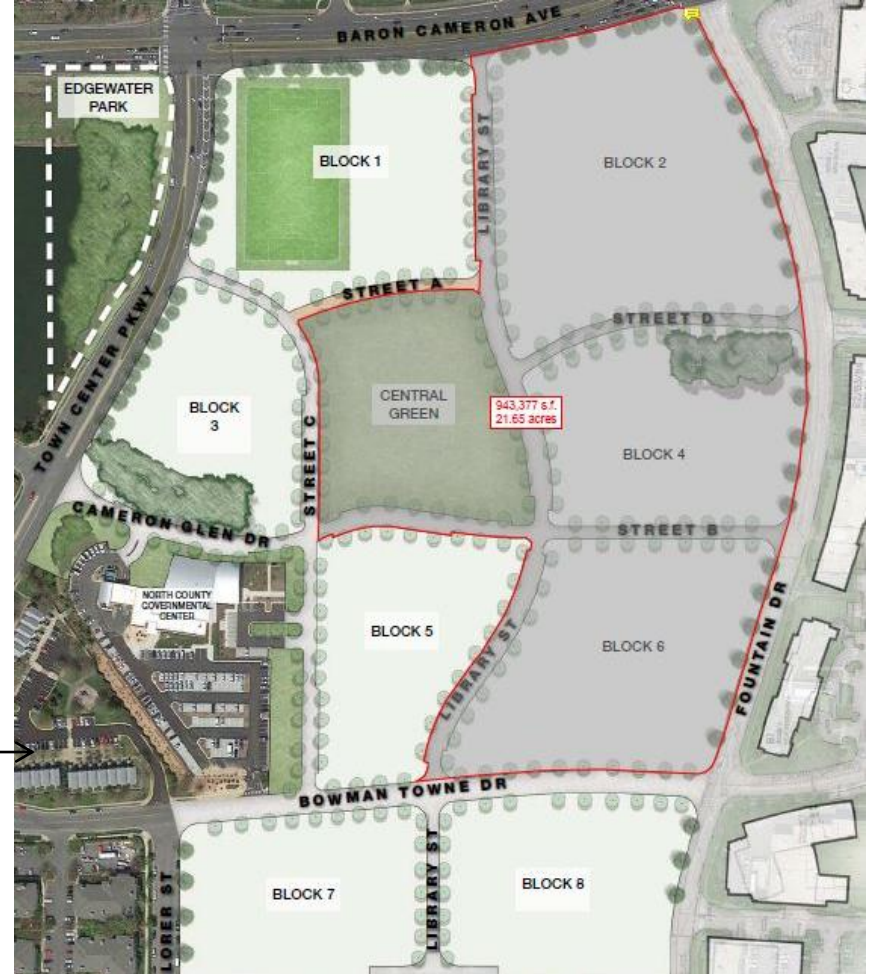
Ackridge & RTC Partnership

- **Location:** 1760 Reston Parkway, Reston
- **Timeline:** Approved by the Board of Supervisors in 2012.
- **Project Summary:** 23-story (maximum of 295 feet tall), 418,900-square foot office building on the subject property



Block 9

Current Ownership



Block 9

Proposed Ownership

Inova

- County Blocks
- Inova Blocks

