

Embry Rucker Community Shelter

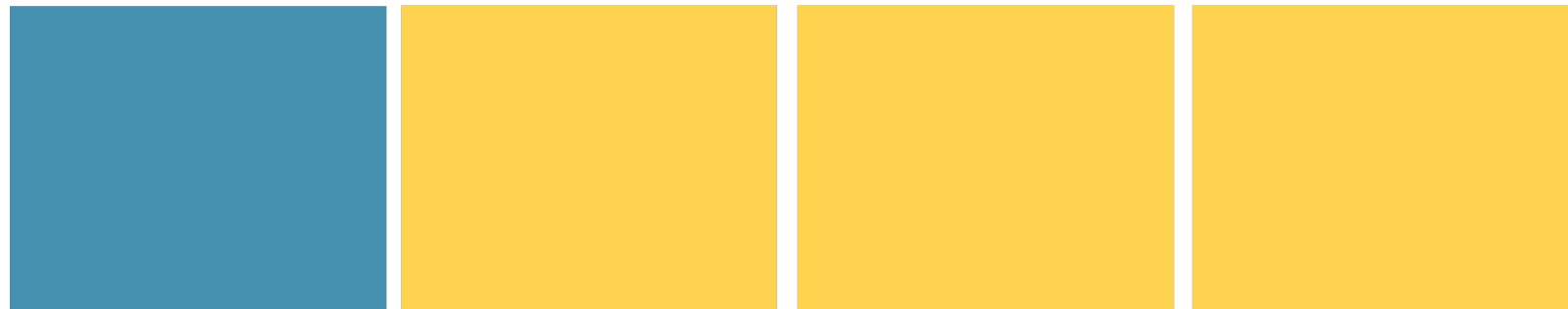
Facility Assessment, Program Overview, and Recommendations

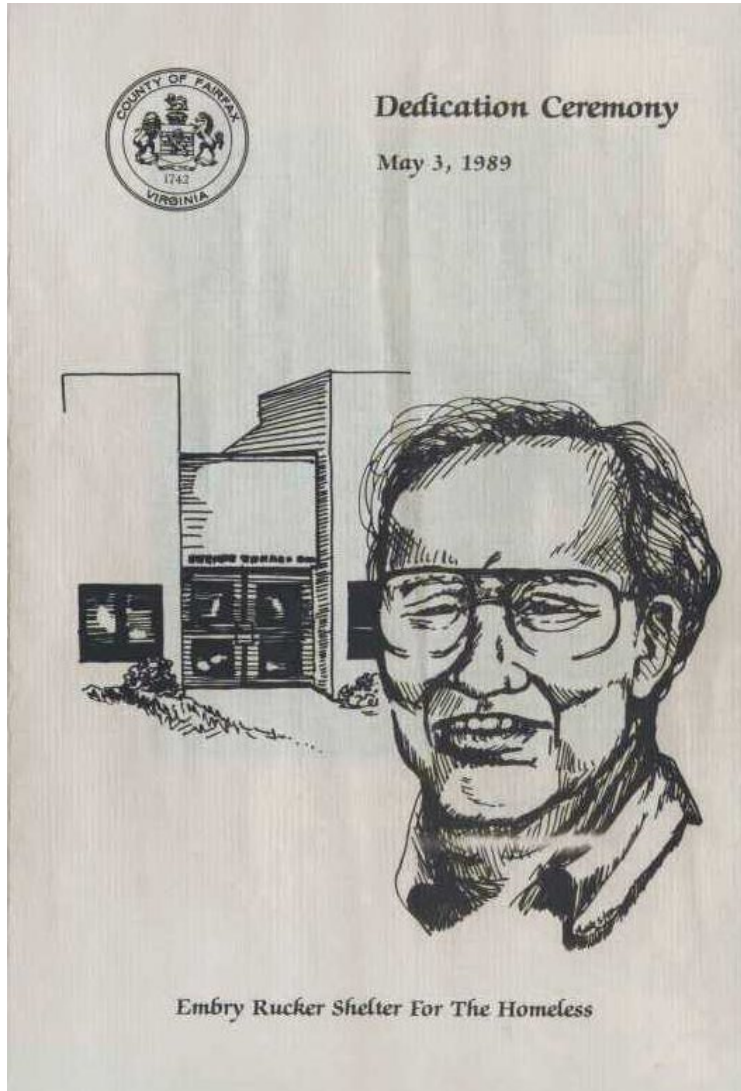
Kerrie Wilson, CEO

Maura Williams, MA, Vice President, Housing and Community Services

Edwina Jackson, MA, Division Director of Homeless Services

Roberta Gosling, Chair, Board of Directors, Cornerstones, Inc.





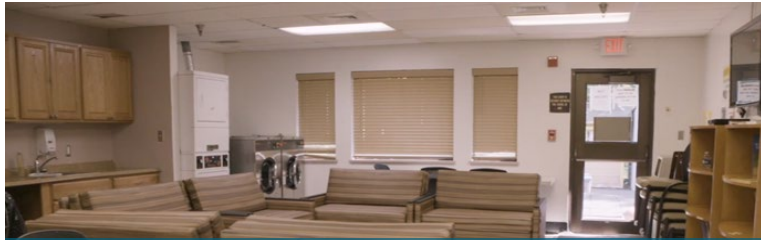
- During the first year, the shelter served **800 people** and the kitchen prepared **5,000 meals a month**.
- By 1995, more than **7400 people including 1700 children** had lived temporarily in the shelter.
- The shelter prepared and served almost **500,000 meals**.

“

My theology in one word is 'presence'. . . There is so much we can do, so much influence we can bring to bear.”

- Rev. Embry Rucker





Embry Rucker Community Shelter

11975 Bowman Towne Drive



Current Facility

- 11,000 square feet
- No major renovations since construction in 1987

Shelter Capacity

- 11 families with children / 24 single adults
- 5 respite beds

Shower and Laundry

- 4 closed shower stalls for families
- 2 closed shower stalls for single adults
- 2 laundry areas with 9 washers/dryers for onsite for families, individuals, and drop-in guests

Common Spaces

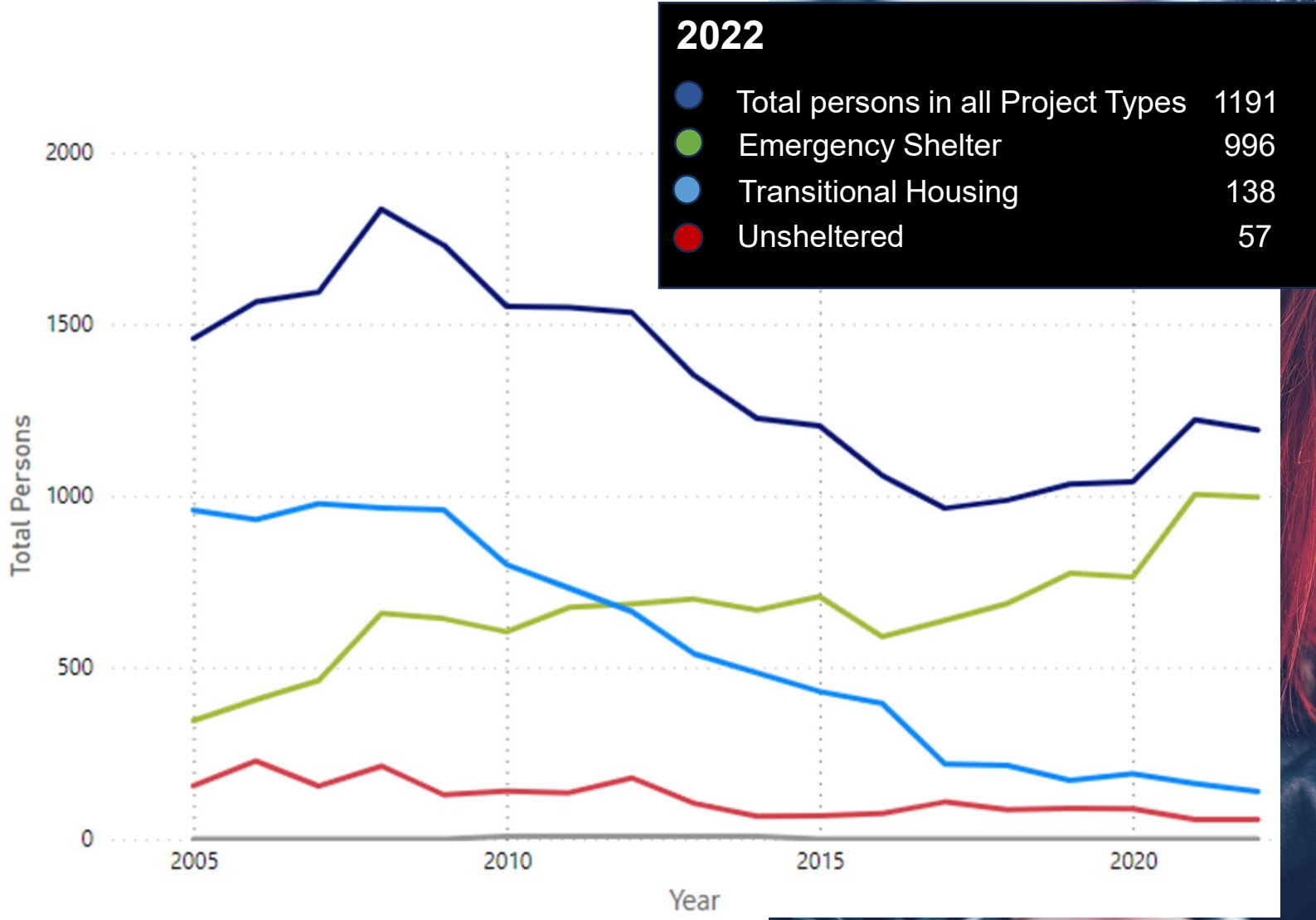
- 1 common space for eating, laundry, watching TV
- Small outdoor play area, no computer or recreation room

Programs and Services Impact (2022-23)

- Outreach Program = served 140 people and helped 45 households secure affordable housing
- Overflow Nights = 539 beds (average of 16.8 beds a night) for 32 nights
- Hypothermia Season (Nov - March) = 7942 beds (average of 58.39 beds a night) and helped house 50 clients
- Operation Stream Shield = 65 individuals secured stable employment and income

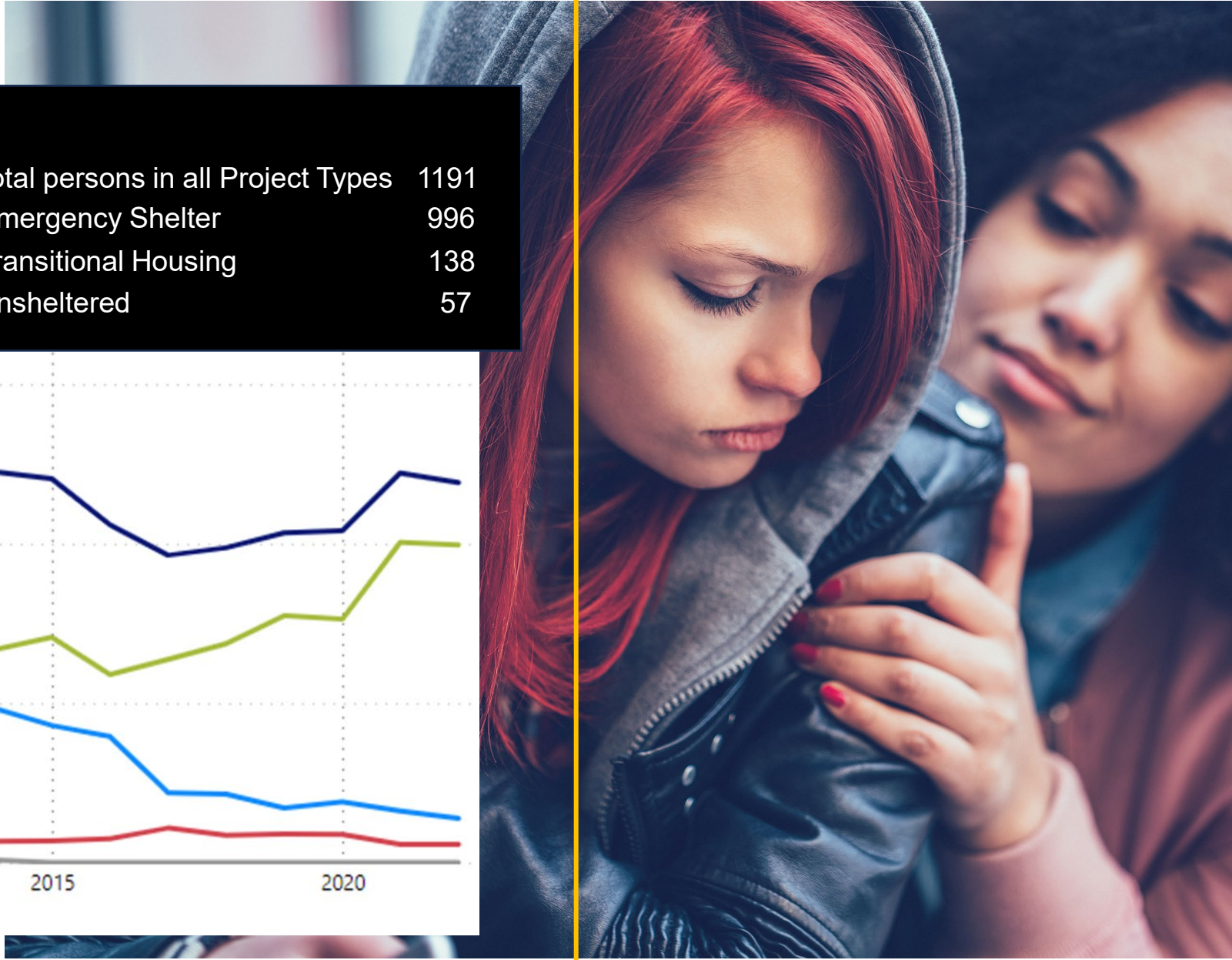


Point in Time Count



2022

Total persons in all Project Types	1191
Emergency Shelter	996
Transitional Housing	138
Unsheltered	57





POINT IN TIME COUNT

Point-in-Time Count Demographics (2017-2023)

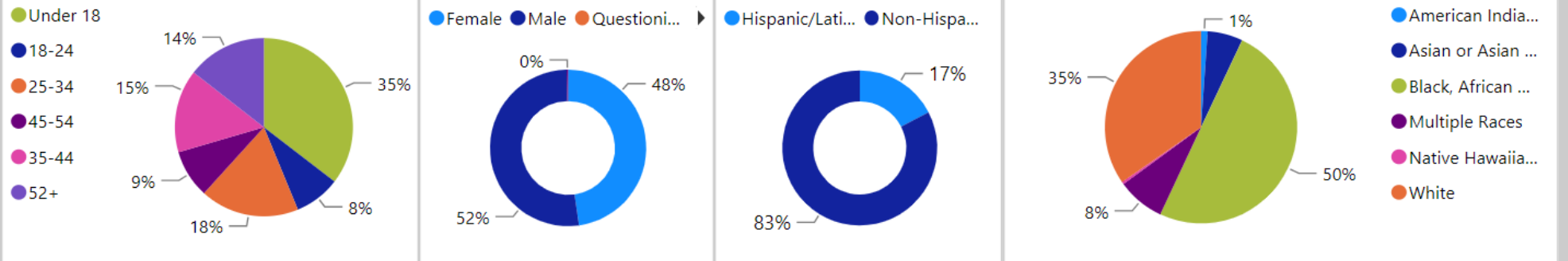
Use the filters below to explore the Point-in-Time Count demographic data by Year (2017-2022), Population, and Project Type.

Year: 2023 | Population: Multiple selections | Project Type: Multiple selections

1310 Total Persons	767 Total Number of Households	847 Total Adults	460 Total Children
------------------------------	--	----------------------------	------------------------------

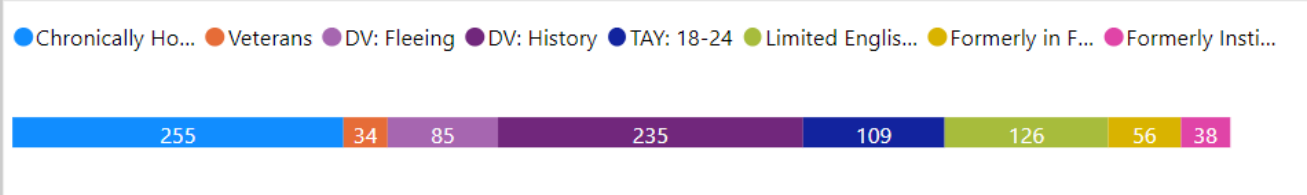
Demographics

- ALL PERSONS
- Age
- Gender
- Race
- Ethnicity



Subpopulations

- ADULTS ONLY
- Chronically Homeless
- Veterans
- Domestic Violence: Fleeing
- Domestic Violence: History
- Transition Aged Youth (18-24)
- Limited English Proficiency
- Formerly Institutionalized
- Formerly in Foster Care

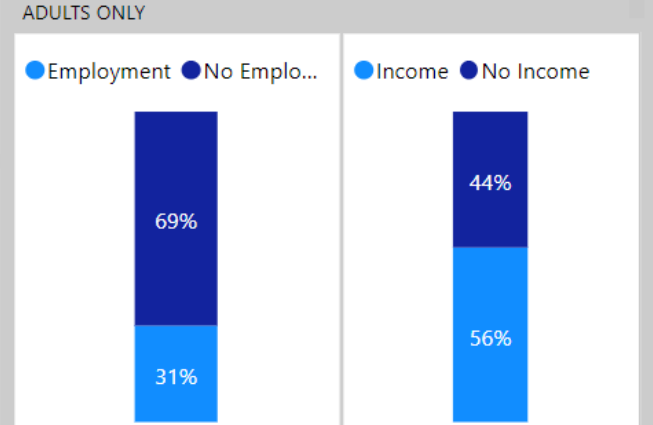


Disabilities

- ADULTS ONLY
- Serious Mental Illness
- Substance Use Disorder
- Co-Occurring Disorder
- Physical Disability
- Chronic Health Condition



Employment & Income



Today. . .

- Approximately **50% of the population we serve are communities of color.**
- Just over **60% of households are female headed, 8% are seniors, and almost 40% are children.**
- In **FY22, Cornerstones' Homeless Services programs served 615 program participants, including 53 households with children and 440 single adults.**
- **31 families and 37 individuals housed from emergency shelter programs.**
- **43 individuals moved from unsheltered homelessness to permanent housing.**



Embry Rucker Community Shelter is a Low-barrier Shelter

- Since the 1990s, many cities and organizations have recognized that a **more inclusive and compassionate approach is needed** to address the diverse needs of individuals experiencing homelessness.
- **Over time, the principles and advantages of low-barrier shelters, such as accessibility, harm reduction, and person-centered approaches that are trauma-informed and equitable, gained recognition as best practices.** This shift was driven by a desire to provide immediate shelter and support to individuals in crisis and to address the underlying causes of homelessness through a comprehensive approach that includes housing, healthcare, and supportive services.
- Proof of sobriety, identification, or specific documentation is not required to stay at the shelter. **Our goal is to remove obstacles, encourage people to seek assistance with finding a safe place to stay, and provide immediate support so individuals can stabilize their situations and take steps towards long-term stability.**

Low-barrier Does Not Mean Low Standards

- Embry Rucker Community Shelter **prohibits the use and sale of drugs or weapons and checks for/confiscates drugs and weapons** from guests during daily safety inspections. All Shelter guests are required to comply with the law and conduct themselves in a respectful, non-threatening, and non-disruptive manner.
- **Experienced, professionally trained staff monitor the health and safety of all guests and the shelter** – daily safety inspections in rooms and dorms, hourly rounds conducted internally and externally, onsite case management, housing location, and employment services and programs, access to full-time onsite nurse, internal and external cameras, front desk personnel 24/7, etc.



Challenges – Service and Transition to Affordable Housing



- **ERCS has capacity for 11 families**, with hotel overflow.
- **ERCS has capacity for 24 single guests and 5 medical beds.**
- **In 2022, 141 families and singles** had beds at the shelter.
- **Currently serving 8 two-parent families, 28 single parent families, with 85 children** under the age of 18.



- **Lack of affordable housing.** Transition out of the shelter can take up to a year.
- **Long-term guests residing in hotels** (currently housing **26 families in hotels / \$14,610.00 per week**).
- There are currently **458 individuals on the STARSS priority list** for shelter beds.
- **365 people** are willing to accept a bed at ERCS.



- **Difficult to secure vouchers or federal support** to provide cost-of-living rental assistance.
- **Many families have never held a lease.** They need assistance to secure and gain/rebuild credit.
- **Shelter guests with large families**, many coming from situations where multiple households lived together.



FAIRFAX COUNTY EMBRY RUCKER COMMUNITY SHELTER DESIGN MANUAL

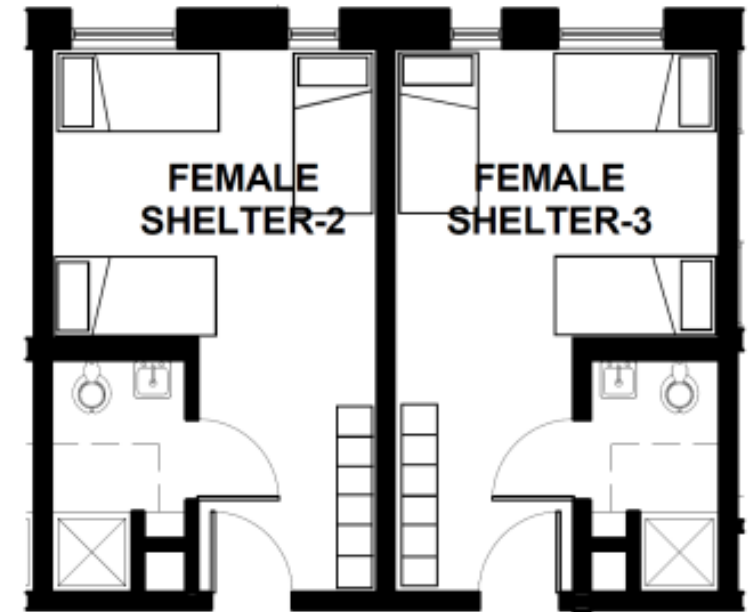
July 2017



TABLE OF CONTENTS

1. INTRODUCTION	7
a. Embry Rucker Community Shelter	
b. Purpose of Design Manual	
c. General Design Criteria	
d. Organization of Design Manual	
2. SITE DESIGN CRITERIA	
a. External Site	
b. Site Organization	
c. Building Orientation	
d. Site Components	
e. Site Circulation & Traffic	
f. Site Furnishings	
g. Signage	
h. Exterior Building Elements	
3. BUILDING DESIGN AND PROGRAMMING CRITERIA	
a. General Building Organization	
b. Co-Located Facility	
c. Program Requirements Summary	
d. Adjacency Matrix	
e. Materials and Finish Schedule	
f. Lighting Requirements	
g. Telecommunications, Data & Security Systems	
4. INDIVIDUAL AREA CRITERIA	
a. Staff and Operational	
b. Emergency Shelter - Singles	
c. Emergency Shelter - Families	
d. Permanent Supportive Housing	
e. Building Common and Support Areas	
5. APPENDIX	
a. Typical Floor Plan- Emergency Shelter/ Permanent Living Quarter	
b. Door Hardware	
c. Door Monitoring System	
d. Door Bell System	
e. Millwork	
f. Loose Furniture	
g. Signage	
h. Staff Lockers	
i. Systems Furniture	
j. HVAC System	

A. TYPICAL FLOOR PLAN- EMERGENCY SHELTER (Singles and families)



Homeless Service Facility Renovation and Operational Requirements*

Staff and Operational

- Staff offices and work areas (all programs)
- Staff lockers
- Conference room
- Breakroom with kitchenette
- Staff toilet rooms
- Medical exam/storage room

Singles Area

- Separate entrance
- Bedrooms
- Medical rooms
- Interview room
- Dedicated laundry and storage
- Dining room
- Resource/Computer room and quiet study area
- Public toilet rooms

Families Area

- Separate entrance
- Family bedrooms
- Interview room
- Dedicated laundry and storage
- Family dining room and playground area
- Resource/Computer room and quiet study area
- Public toilet rooms

Common/Support

- Lobby and registration
- Kitchen and kitchen support area
- Storage area
- All associated MEP equipment and services rooms
- Janitor closets
- IT equipment room

*Budget must anticipate Facility, plus professional services staff and deployed specialists (public health, mental health), etc.





Hear Symone's story about living at the Embry Rucker Community Shelter and how Cornerstones helped her secure an affordable home for her family.

[Cornerstonesva.org](https://www.cornerstonesva.org/) / [@Cornerstonesva](https://www.instagram.com/cornerstonesva)



There are many situations that can put down a person and they become homeless. And none have to do with alcohol, or drug additions, or mental health.

Getting people from the street or from their car, from the shelter, from their insecurity as far as housing to a secure place - that opens-up a wide variety of opportunities for them.

**They start to think "I'm safe."
When they feel safe, they're able to move forward.**



*Thank you for your commitment to helping us ensure strong and stable families and community. **Together, we're providing stability, empowerment, and hope for everyone who calls this region home.***

Kerrie Wilson, CEO

kerrie.wilson@cornerstonesva.org / 571.323.9571

Maura Williams, MA, Vice President, Housing and Community Services

maura.williams@cornerstonesva.org / 571.323.1407

Edwina Jackson, MA, Division Director of Homeless Services

edwina.jackson@cornerstonesva.org / 571.323.1438

Roberta Gosling, Chair, Board of Directors