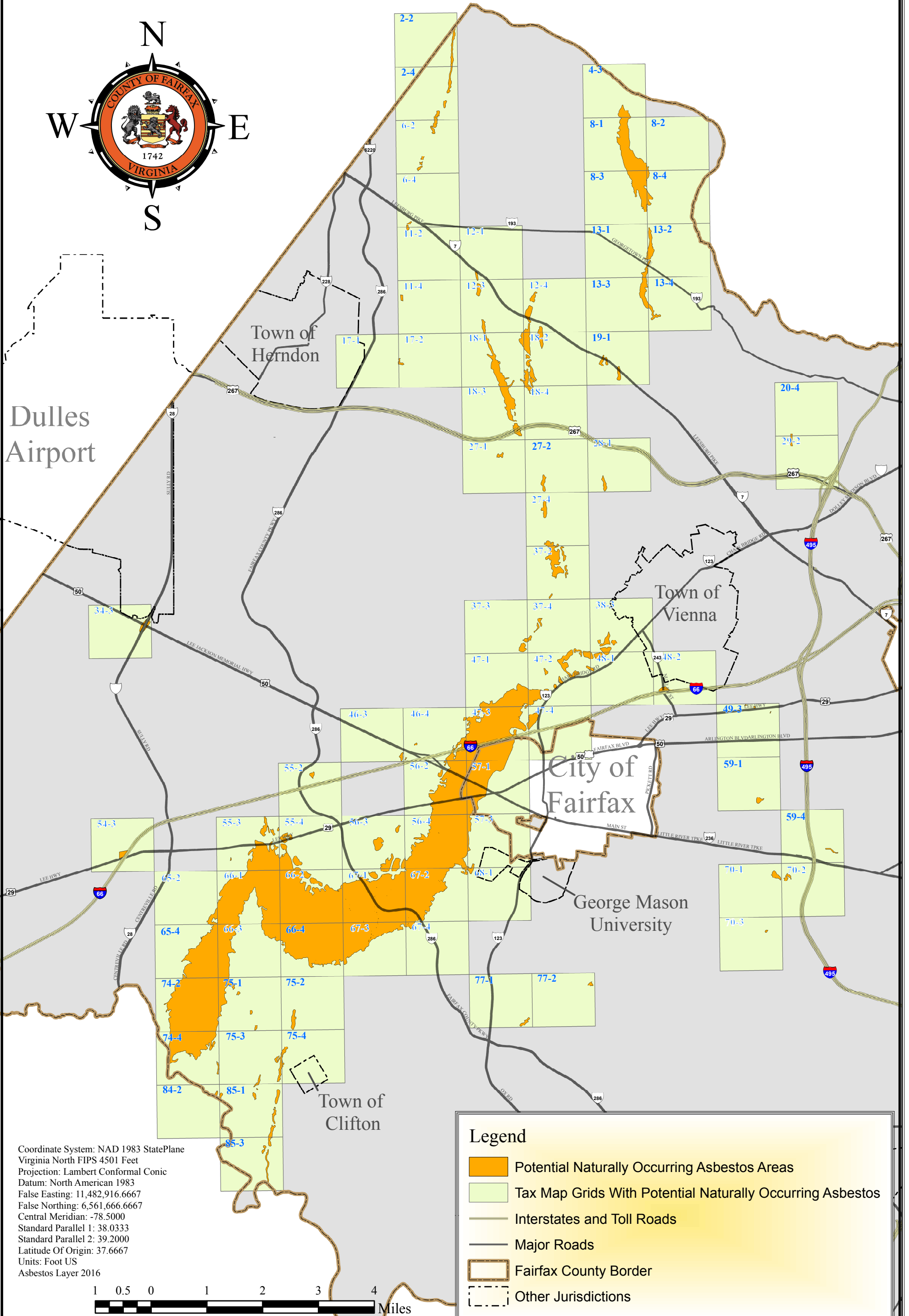


# Fairfax County, Virginia

## Potential Naturally Occurring Asbestos Areas



Coordinate System: NAD 1983 StatePlane  
 Virginia North FIPS 4501 Feet  
 Projection: Lambert Conformal Conic  
 Datum: North American 1983  
 False Easting: 11,482,916.6667  
 False Northing: 6,561,666.6667  
 Central Meridian: -78.5000  
 Standard Parallel 1: 38.0333  
 Standard Parallel 2: 39.2000  
 Latitude Of Origin: 37.6667  
 Units: Foot US  
 Asbestos Layer 2016

**Legend**

- Potential Naturally Occurring Asbestos Areas
- Tax Map Grids With Potential Naturally Occurring Asbestos
- Interstates and Toll Roads
- Major Roads
- Fairfax County Border
- Other Jurisdictions