

COMMUNITY INFORMATION MEETING

Cub Run Rec Center

Child Care Facility



Agenda

- Welcome
- Project Background and Demonstrated Success
- Project Scope and Construction Impacts
- Customer Accommodations During Construction
- Child Care Facility Operating Plans
- Project Timeline and Next Steps
- Questions and Answers





Project Background and Demonstrated Success



Young Families

CUB RUN REC CENTER

Service Area vs. Base of Fairfax County/City

"Younger than average – median age in the Cub Run service area is the youngest of all park service areas, and households with children are slightly more common. Older kids (age 10+) and younger and middle-aged adults (age 20 to 54) are represented in slightly above average proportions here.



Park Demographic Profiles

2021 Edition



Tracking demographic shifts in park service areas
from 2010 to 2018



February 2021



Brailsford & Dunlavey Study

Age	Cub Run	Oak Marr	Spring Hill	Providence	Audrey Moore	South Run	Lee District	Mt. Vernon	GW	Average
 <13	22.1%	19.3%	19.1%	18.7%	19.8%	20.0%	20.6%	15.7%	22.1%	19.7%
13-17	6.7%	7.8%	6.6%	5.3%	6.6%	7.7%	6.0%	3.4%	6.5%	6.3%
18-24	6.0%	8.3%	4.3%	6.6%	6.4%	5.8%	6.3%	4.2%	5.9%	6.0%
 25-34	16.3%	14.7%	9.8%	15.8%	14.0%	10.0%	14.8%	18.6%	12.9%	14.1%
35-44	16.0%	14.0%	12.7%	14.8%	15.0%	13.3%	15.1%	17.3%	14.8%	14.8%
45-54	15.0%	14.3%	15.1%	13.5%	15.6%	16.6%	13.9%	14.5%	14.5%	14.8%
55-64	10.8%	12.6%	14.5%	12.1%	13.9%	16.1%	11.6%	14.0%	11.6%	13.0%
65+	7.2%	9.0%	17.9%	13.2%	8.9%	10.4%	11.7%	12.8%	11.8%	11.4%

Source: SitesUSA

FIGURE 5.18: Age Characteristics

“In contrast, Cub Run contains a greater percentage of young families, with the second greatest concentration of those between the ages of 25 to 34 and the greater percentage of those under 13 years old.”

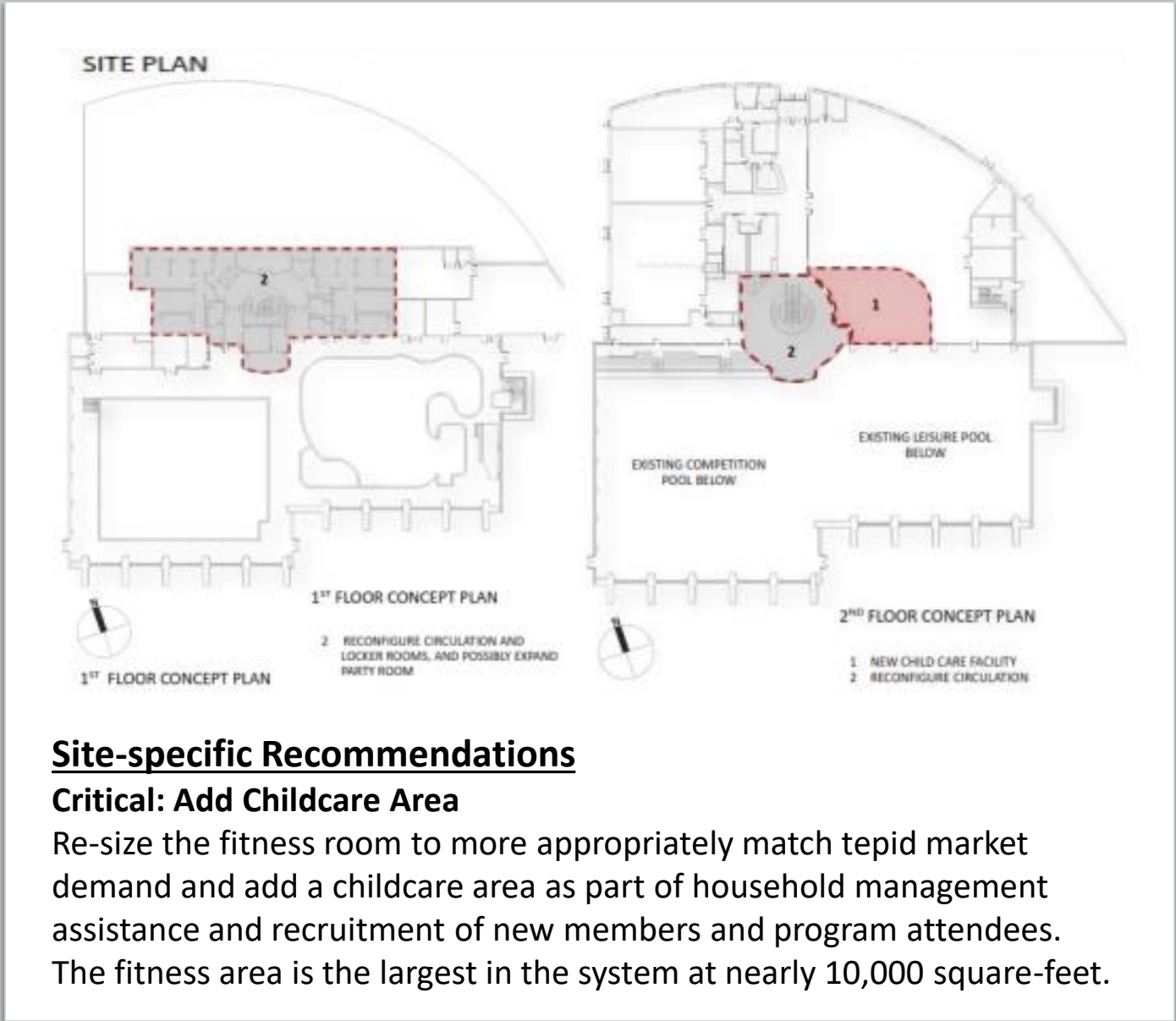




Fairfax County Park Authority
 FCPA System-wide Sustainability Plan for RECenters
 Final Report
 March, 2018

Brailsford & Dunlavy Study

Participants at the Cub Run focus group expressed interest in additional membership options that provide access to only aquatics or fitness space in lieu of the entire facility. Participants expressed an interest in childcare, updated multi-purpose rooms, and family changing rooms to enhance the overall experience of patrons.



Site-specific Recommendations

Critical: Add Childcare Area

Re-size the fitness room to more appropriately match tepid market demand and add a childcare area as part of household management assistance and recruitment of new members and program attendees. The fitness area is the largest in the system at nearly 10,000 square-feet.



Success Story: Oak Marr Child Care Service

- How Do Our Patrons Benefit from child care service?
 - ✓ Increase in families returning to the Rec Center
 - ✓ Parents are able to take group exercise classes/swim at more convenient times
 - ✓ Provides children with a safe and fun place to socialize, especially those who are not enrolled in a daycare program
 - ✓ Focus is on providing a beneficial service to community families



Success Story: Oak Marr Child Care Service

- **Ages:** 3 months – 10 years old
- **Hours:**
 - Monday – Thursday: 8 a.m. to 1 p.m. and 4 to 8 p.m.
 - Friday and Saturday: 8 a.m. to 1 p.m.
- **Cost:** \$3 for first child; \$1.50 for each additional child
- **Limitations:** 2-Hour Time Limit (no diaper changes, food or snacks)
- **Safety Notes:**
 - Parent/Guardian must remain on-site and in the building
 - Parents/Guardians receive a pager in case of emergencies
 - Department of Social Services Points System is used for child-to-staff ratios



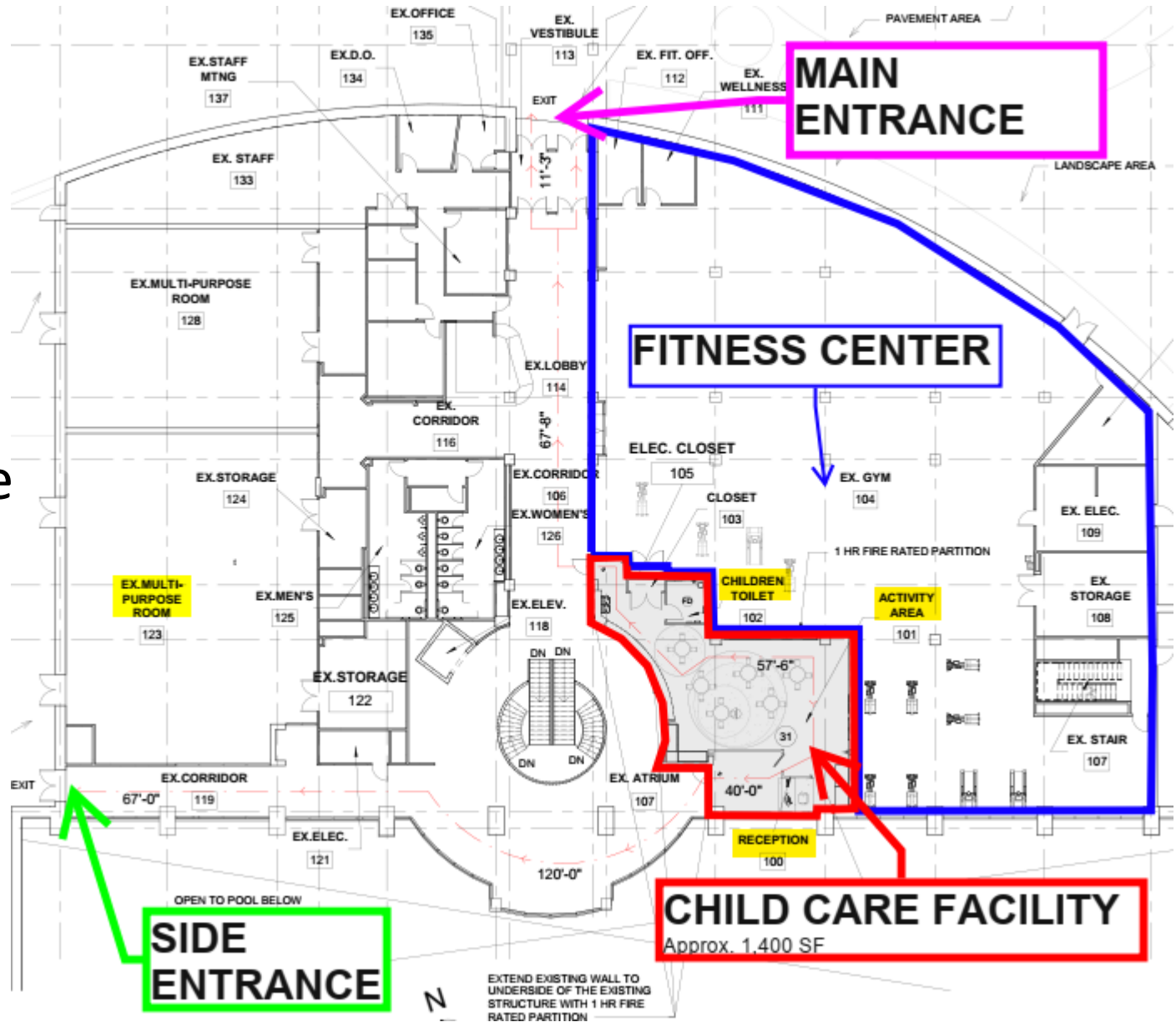
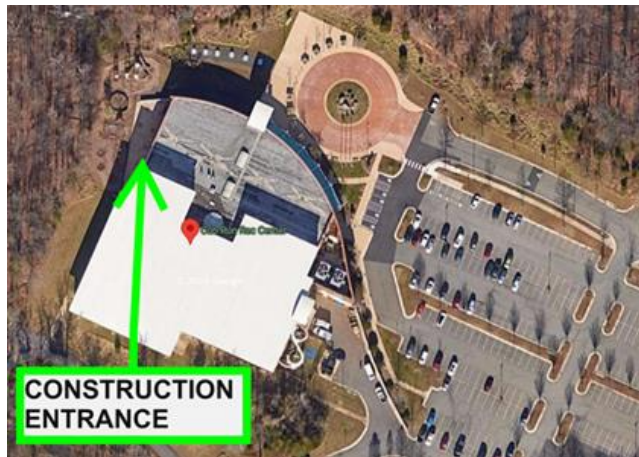


Project Scope and Construction Impacts



Project Location

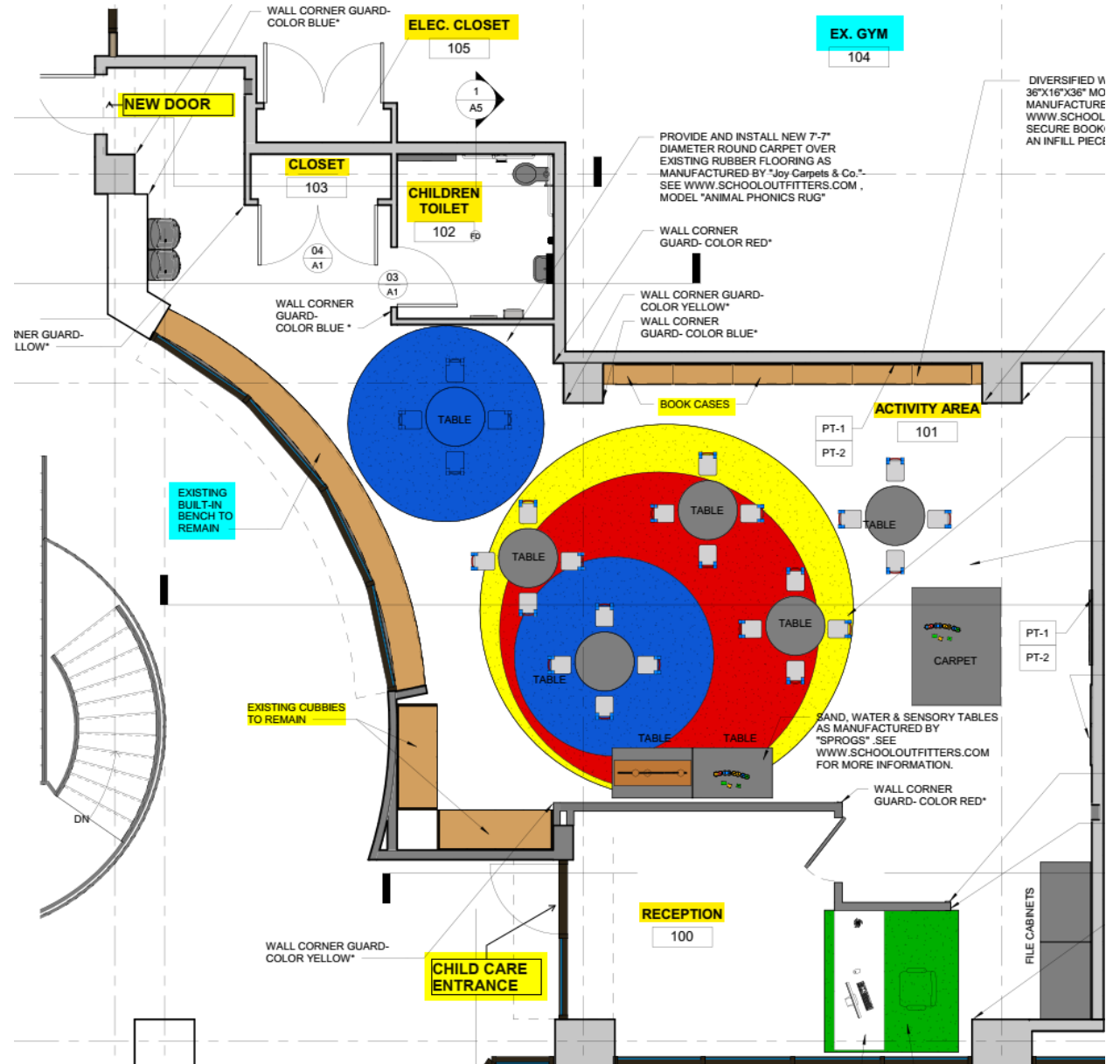
- SW corner of existing Fitness Center
- Construction worker access via side entrance



Design Features

The scope of work for the Child Care Facility includes:

- Secure entrance
- Full-height separation walls including sound insulation
- Addition of exit door
- Child-sized restroom
- Accessible water fountain
- Storage closet
- Bookcases and millwork
- Play Area/Common Area
- Acoustical ceiling clouds
- Sensory Boards



Design Features

- View towards Child Care Entrance



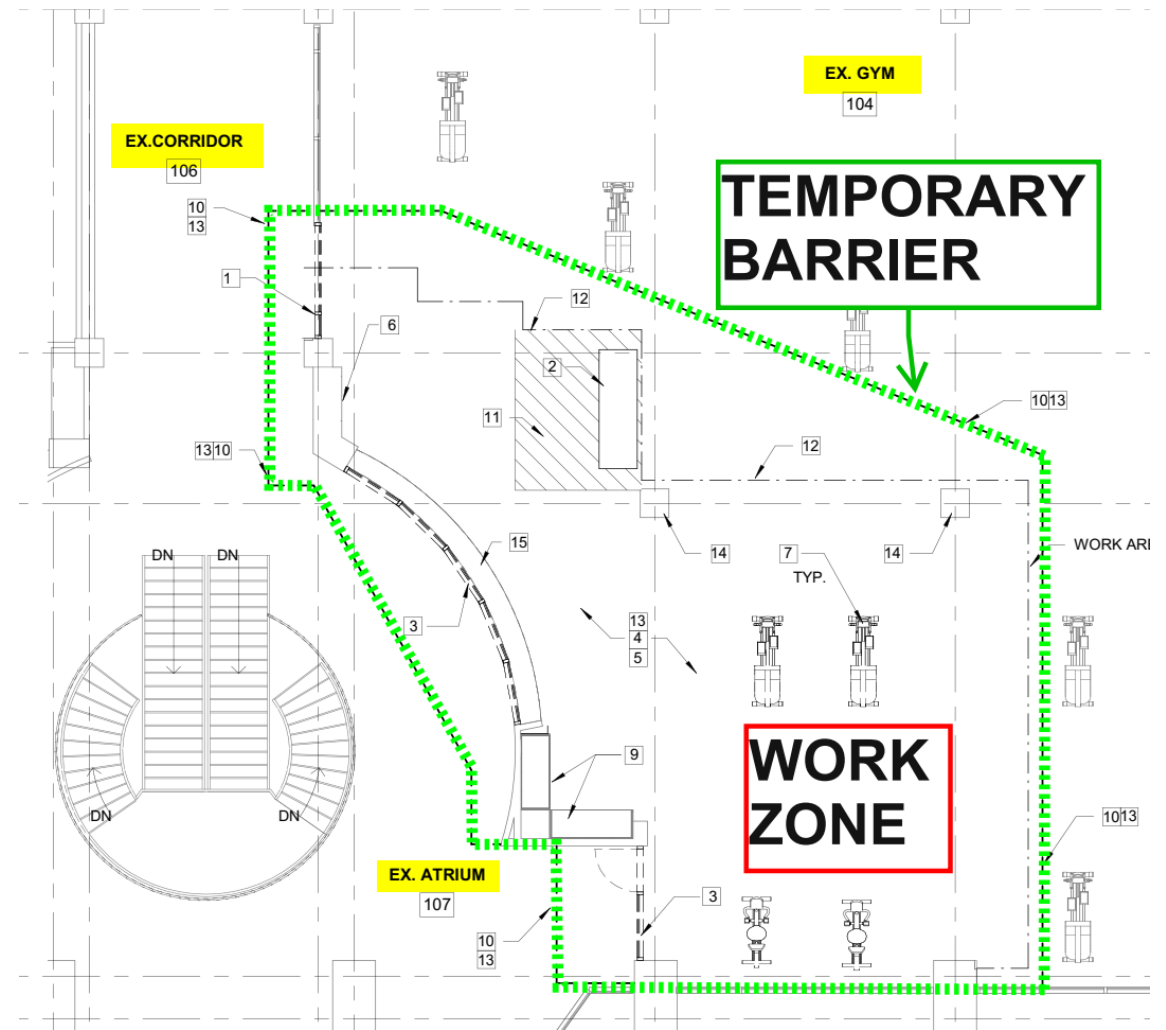
Design Features

- View towards new exit door



Construction Impact

- Working hours for construction will be between 6:00am and 3:00pm.
- Some mechanical, electrical and plumbing work will be performed overnight to minimize impact to Rec Center activities.
- Overnight work will be performed while the facility is closed.
- A temporary barrier will be installed around the entire construction zone to isolate the construction work zone.





Customer Accommodations During Construction



Making Space





Child Care Operations Plans



Drop in Child Care Operation

- **Ages:** 3 months – 10 years old
- **Hours:**
 - Monday – Thursday: 8 a.m. to 1 p.m. and 4 to 8 p.m.
 - Friday and Saturday: 8 a.m. to 1 p.m.
- **Cost:** \$3 for first child; \$1.50 for each additional child
- **Limitations:** 2-Hour Time Limit (no diaper changes, food or snacks)
- **Safety Notes:**
 - Parent/Guardian must remain on-site and in the building
 - Parents/Guardians receive a pager in case of emergencies
 - Department of Social Services Points System is used for child-to-staff ratios



Photos of Child Care Center at Oak Marr Rec Center





Project Timeline

Construction Timeline

- Hire Contractor.
- Contractor then orders materials and equipment.
- Tentative construction start is mid to late March.
- Anticipated construction completion by mid-summer.
- Open the childcare facility by late summer/early fall
- The time frames noted above are subject to change due to supply chain issues and material availability.



Community Reaction from Oak Marr

"We have been coming to Oak Marr Rec Center since before COVID-19 because it's the only Fairfax county rec center with child care. We are so glad it's reopened!! The people there clearly love children and my kids always have lots of fun there. It would be really wonderful if more rec centers start child care services as it's next to impossible for us with little kids to go to gyms without it. We appreciate them tremendously. Thank you for helping Fairfax county parents stay healthy! "

- Kumiko



Questions

